



Boots on the Ground

LONG COVID SUMMIT

Panel Discussion



Speaker Disclosures

No relevant financial disclosures



The Thing about Long COVID

Swati Gaur, MD, MBA, CMD

Medical Director, New Horizons Nursing Facilities, Northeast Georgia Health Systems

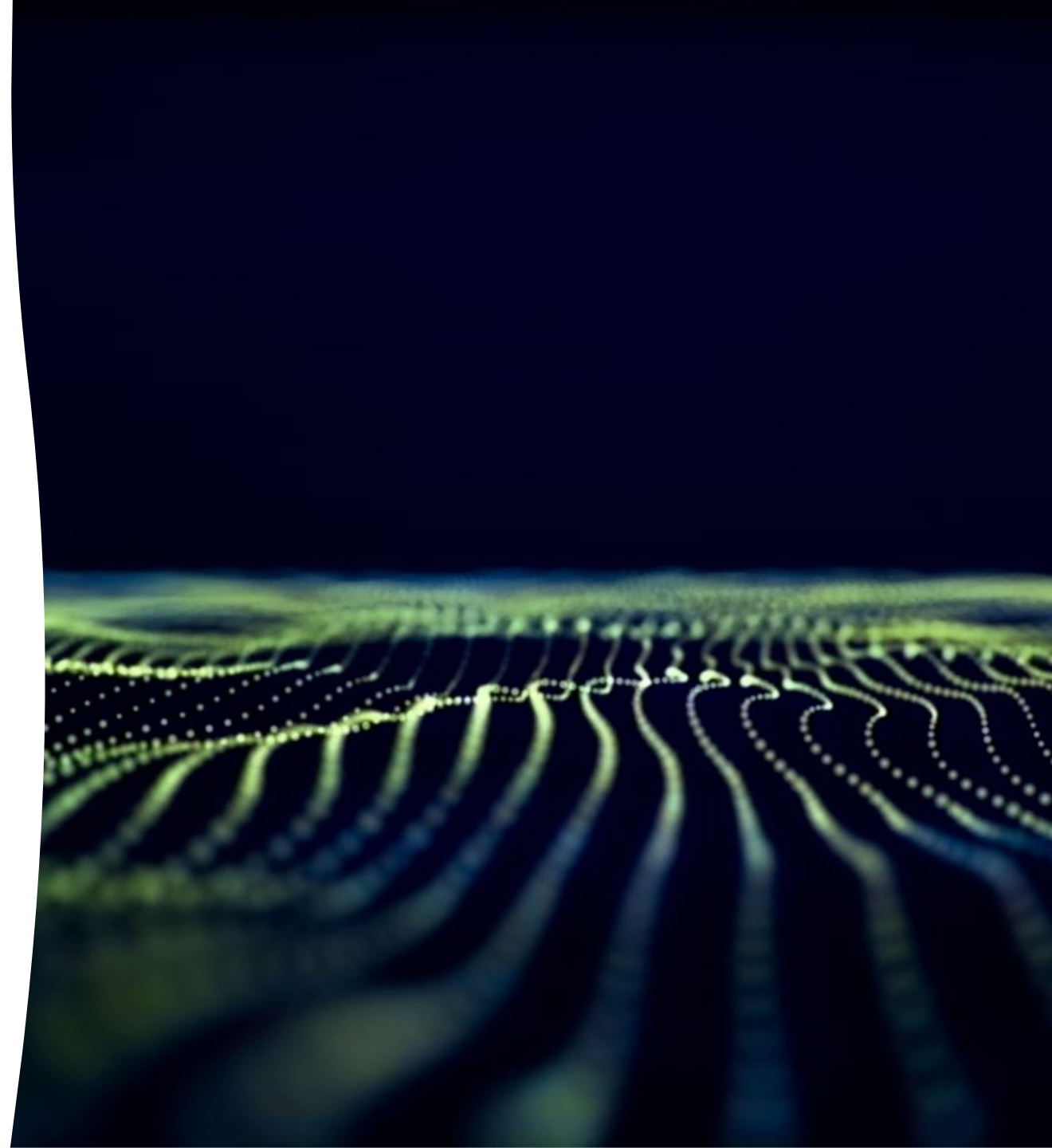
CEO, Care Advances Through Technology

Coding Long COVID (U09.9) - a critical step

PRIMARY

- chronic respiratory failure (J96.1-),
- loss of smell (R43.8),
- loss of taste (R43.8),
- multisystem inflammatory syndrome (M35.81),
- pulmonary embolism (I26.-)
- pulmonary fibrosis (J84.10),

U09.9
SECONDARY to
above specific
codes



Vaccine effectiveness against Long COVID

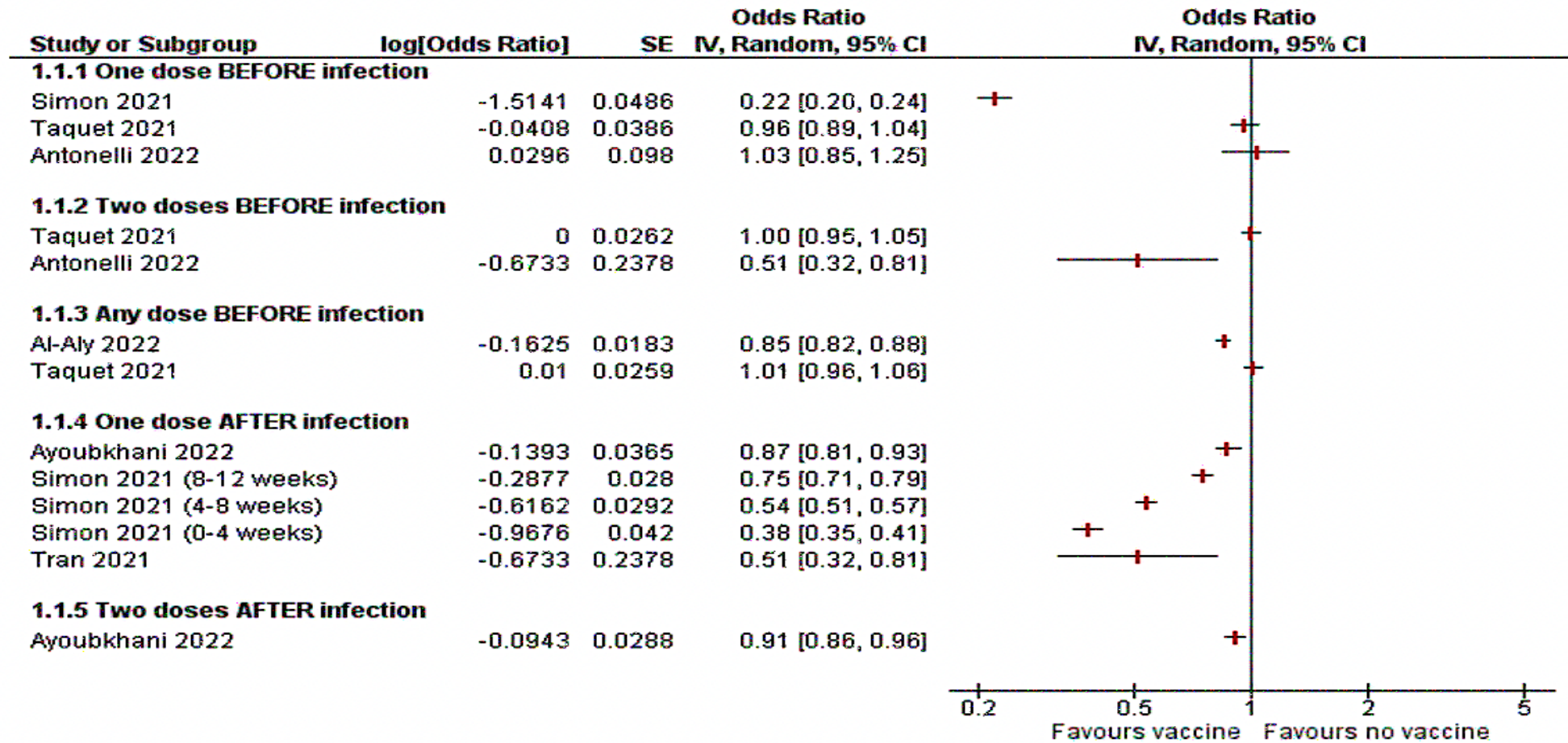


Figure 3. Impact of vaccinations on long COVID forest plot.



Calling All the Shots

Ginny Hoar, PharmD., BCGP

Manager, Consultant Pharmacists (AR, AL, MS, LA, GA)
Omnicare, a CVS Health Company

Immunizations are Key

COVID Vaccine & Boosters

Influenza Vaccine

Pneumococcal Vaccine

Herpes Zoster

Tdap

Collaborating with Consultant Pharmacist

New Issue or
Past symptoms

Communicating
with
Prescribers

Considering
other
conditions



Bouncing Back to Baseline

Carmelle Casimir, DNP, FNP-BC

Senior Clinical Services Manager, Optum Nurse
Practitioner Care Delivery & Management

Updates from the Bedside



Symptom management

Documenting the Baseline
Residual Effects vs. New Symptoms



Staffing Turnover

Tackling ongoing staff shortages
impact to Resident's care

Setting Expectations

- Educating the Staff
- Communicating with the Family



Headwinds for PALTC

David Nace, MD, MPH, CMD

Associate Professor and Clinical Chief of Geriatric
Medicine, University of Pittsburgh

Chief of Medical Affairs, UPMC Senior Communities

A serene landscape photograph of icebergs floating in calm water at sunset. The sky is filled with soft, colorful clouds in shades of blue, orange, and yellow. The icebergs, which are white and blue, are reflected in the still water below. The overall mood is peaceful and contemplative.

Challenges in PALTC

- Lack of Clinical Research in Elderly populations and PALTC settings
- PALTC residents absent from Post-COVID Clinics

Policy Considerations

Name _____

Signature _____

Date _____



Open Discussion