

1

---

---

---

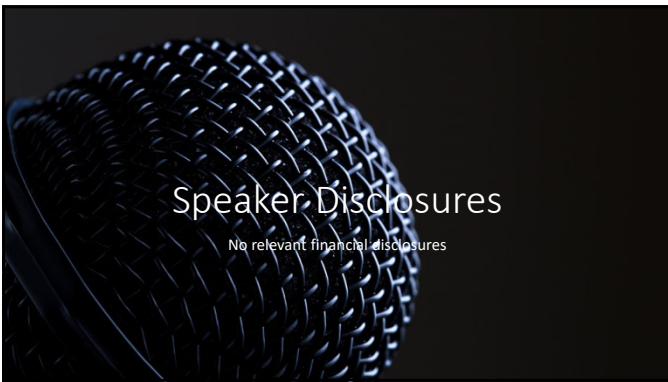
---

---

---

---

---



2

---

---

---

---

---

---

---

---



3

---

---

---

---

---

---

---

---



Immunizations are Key

---

COVID Vaccine & Boosters

---

Influenza Vaccine

---

Pneumococcal Vaccine

---

Herpes Zoster

---

Tdap

7

---

---

---

---

---

---

---

---

Collaborating with Consultant Pharmacist

New Issue or Past symptoms

Communicating with Prescribers

Considering other conditions

8

---

---

---

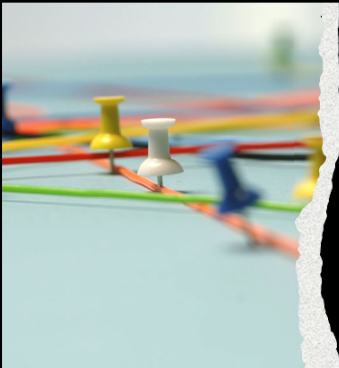
---

---

---

---

---



## Bouncing Back to Baseline

Carmelle Casimir, DNP, FNP-BC  
Senior Clinical Services Manager, Optum Nurse  
Practitioner Care Delivery & Management

9

---

---

---

---


---

---

---

---

Updates from the Bedside



**Symptom management**  
Documenting the Baseline  
Residual Effects vs. New Symptoms



**Staffing Turnover**  
Tackling ongoing staff shortages  
impact to Resident's care

10

---

---

---

---

---

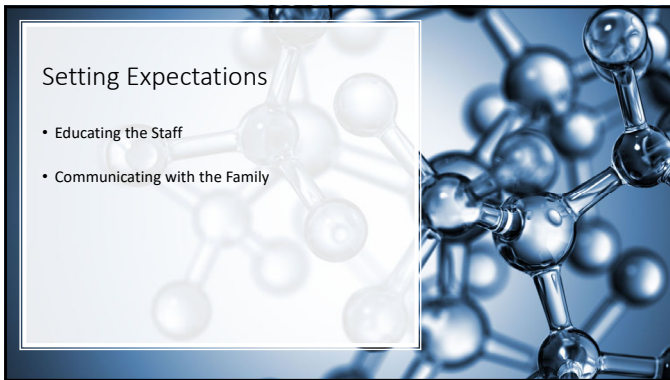
---

---

---

Setting Expectations

- Educating the Staff
- Communicating with the Family



11

---

---

---

---

---

---

---

---

Headwinds for  
PALTC

David Nace, MD, MPH, CMD  
Associate Professor and Clinical Chief of Geriatric  
Medicine, University of Pittsburgh  
Chief of Medical Affairs, UPMC Senior Communities



12

---

---

---

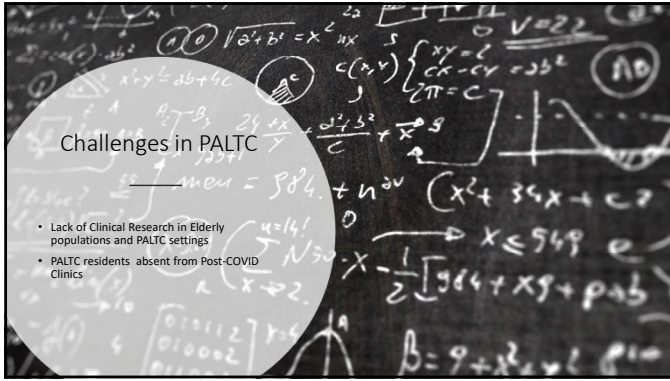
---

---

---

---

---



13

---

---

---

---

---

---

---

---



14

---

---

---

---

---

---

---

---



15

---

---

---

---

---

---

---

---