

2022 Conference Syllabus



FMDA's 31st Annual Conference & Trade Show Nov. 3-6, 2022



UNIVERSAL ORLANDO

*Joint Provided by FMDA – The Florida Society for Post-Acute and Long-Term Care Medicine and
AMDA – The Society for Post-Acute and Long-Term Care Medicine*

*FMDA's 31st Annual Conference is held in collaboration with the
Florida Chapters of Gerontological Advanced Practice Nurses Association,
National Association Directors of Nursing Administration, and Florida Geriatrics Society.*



THE FLORIDA SOCIETY
FOR POST-ACUTE AND
LONG-TERM
CARE MEDICINE



NADONALTC
NATIONAL ASSOCIATION DIRECTORS OF NURSING ADMINISTRATION LONG TERM CARE



Loews Portofino Bay Hotel

EVENT LOCATOR MAP



Wireless access
in the Conference Center
meeting rooms:
UN= loews_conf
PIN code: FMDA22

- A. **Ligurian I**
Registration & Information
- Ligurian II**
Annual Membership Meeting
- B. **Ligurian II-III**
101, 102, 103, 104, 105, 106
- C. **Venetian I**
107, 109
- D. **Venetian II**
108, 110
- E. **Venetian III-V**
President's Welcome
111, 112, 113, 114, 115, 116, 117, 118,
119, 120, 121, 124, 125, 126, 127, 128
- F. **Tuscan III-IV**
Exhibit Hall Welcome Reception
Annual Trade Show Posters
& Silent Auction
- G. **Tuscan I**
122
Conference Planning
Committee Meeting
- H. **Tuscan II**
123
- I. **Tuscan I-II**
Product Theater Lunch
- J. **Citrus Piazza**
President's Wine & Cheese Reception
Poster Recognition,
and Award Presentation
- K. **Venetian Foyer**
Continental Breakfast on Friday

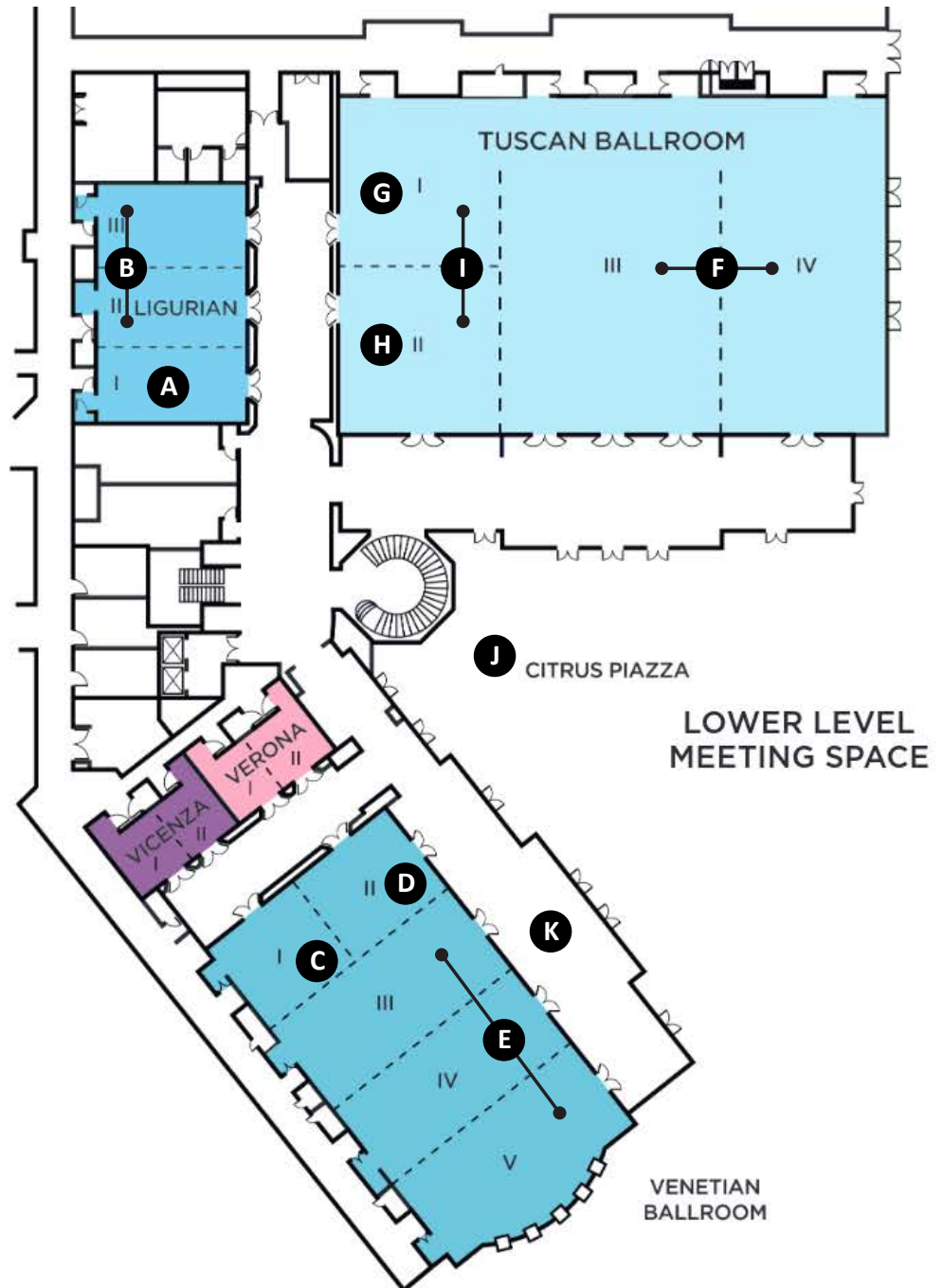


Table of Contents

WELCOME LETTERS.....	4-7
PROGRAM DESCRIPTION, TARGET AUDIENCE, AND OBJECTIVES	9
MEETING INFORMATION	
Continuing Education, Education Committee, Certificates of Attendance	10-11
CE Credits Calculated by Session and by Profession	12
Conference Faculty: Speaker Biographies.....	13-22
Faculty Disclosures.....	32
SOCIAL MEDIA CONTEST	23
RECOGNITION OF OUR SPONSORS.....	25-26
PROGRAM & SCHEDULE OF EVENTS	27-35
ANNUAL TRADE SHOW EXHIBITORS	36-41
2023 CALL FOR PRESENTATIONS	41
SESSION-BY-SESSION LEARNING OBJECTIVES.....	43-56
101 – Long COVID: State of the State	43
102 – Healing Challenges Associated with COVID-19 Skin and Long-Haulers	43
103 – Boots on the Ground: A Panel Discussion.....	44
104 – EKG Abnormalities in PALTC in the COVID Era.....	44
105 – Prognostication: Including Attributes and Predictors of Long COVID.....	45
106 – The Importance of Deprescribing for Older Adults	45
107 – Mindfulness: Taking Care of You While You Take Care of Others.....	46
108 – Update on Telemedicine Research	46
109 – Coping with Healthcare Worker Burnout	47
110 – Specialized Co-Management Care for People Living with Dementia	47
111 – Keynote Address: Florida State of Medicine: How we got here, where we are, and how to improve.....	48
112 – Managing Delirium in PALTC.....	48
113 – Moving from Pandemic to Endemic.....	49
114 – AMDA Public Policy Update.....	49
115 – Recognizing Burnout in Those Caring for Patients with Dementia	50
116 – Improving PALTC.....	50
117 – Red-Eye Rounds: PALTC & Geriatrics Clinical Quandaries.....	51
118 – National Leaders Forum.....	51
119 – Best Practices for Pain Management in PALTC	52
120 – Get Smart About Diabetes in the Geriatric Population	52
121 – AHCA Regulatory Update.....	53
122 – Medicare Billing & Coding Update.....	53
123 – Medical Care of LGBTQ+ Older Adults in PALTC	54
124 – Keynote Address: State of the Hospice Benefit 2022	54
125 – Geriatric Literature Review.....	55
126 – A Case-Based Approach to Optimal Pharmacotherapy	55
127 – Breaking Free from Osteoporosis.....	56
128 – Effective Usage of Psychiatric Medications in Nursing Facilities	56
Poster Presentations.....	57-60

AMDA/FMDA Disclosure

Registrants for this program understand that medical and scientific knowledge are constantly evolving. The views and treatment modalities of the instructors are their own and may reflect innovations (including off-label or investigational use of medical products) and opinions not universally shared. Every effort has been made to assure the accuracy of the data presented at this program in the context of accepted medical practice. Prior to clinical application, physicians should check specific details such as drug doses and contraindications, off-label uses, or other details in standard sources. The views and treatment modalities of the instructors are not those of the AMDA or FMDA, but are presented in this forum to advance scientific and medical education. Registrants waive any claim against AMDA/FMDA arising from information presented at this program.



400 EXECUTIVE CENTER DRIVE, SUITE 208
WEST PALM BEACH FL 33401

Nov. 3, 2022

Dear Friends and Colleagues:

Welcome to our 31st Annual Conference! We are very glad you're here. FMDA has witnessed the explosive growth of an organization that is dedicated to serving and representing its members. Membership is strong, and the influence is making more of an impact than ever.

FMDA remains committed to ensuring that its members have access to the latest information, opportunities for educational advancement, and the framework to advocate the positions that will benefit our profession and our patients. COVID-19 has been challenging us in ways we could never have imagined. Our new normal is getting so much closer.

Our annual conference has evolved into a regional gathering with national impact for medical directors, attending physicians, advanced practice nurses, consultant pharmacists, physician assistants, directors of nursing, and administrators working in the PALTC continuum. It provides an opportunity to network and enjoy educational seminars from some of the top names in their areas of expertise.

We are always striving to improve, and we welcome your feedback. This is your association and your annual conference. Please take a few minutes to review the information in this syllabus and familiarize yourself with the events, how to earn continuing education credits, and the format of the meeting.

The registration and information desk will be open all day on Thursday, Friday, Saturday, and half of Sunday. FMDA staff members remain available to answer any questions you may have.

This year, we are using AMDA's Apex system to process the session evaluations, earn credit for the sessions you attend, and issue the certificates of attendance. This online system applies to all attendees. You will be asked to either login with your AMDA credentials, or if you don't have an AMDA account, you can create a free account. Either scan the QR code on page 35 or visit <https://apex.paltc.org/course/view.php?id=1470>.

We invite you to attend Vitaris' product theater lunch on Saturday. Also, join us on Friday at 5:25 p.m. at the official Welcome Reception in the exhibit hall, sponsored by VITAS Health Care – the 31st Annual Diamond Sponsor. While at the Trade Show, take the opportunity to see some of the latest products and innovations by visiting each of the companies that help make this conference possible.

Make sure your Trade Show Card is initialed by each of the companies represented to be eligible to win some of the door prizes to be awarded after the last session on Sunday. Drop your completed card into the box before you leave the exhibit hall on Saturday. Remember: You must be present at the end of the conference to win!

Also, our thanks go to Bronze Grande Sponsors CompMed, GuideStar, Optum, Teva, Urovant, and Sunovion.

Be sure to join us at the President's Wine & Cheese Reception – sponsored by Optum – on Saturday from 6:10 to 7:40 p.m. Spend time with your friends and colleagues at this fun and relaxed event. Then celebrate as we announce the winner of this year's Quality Champion Award. Our thanks to Optum for supporting this year's award program.

Remember that Daylight Saving Time ends on Sunday, Nov. 6. The clocks are turned backward 1 hour – so you will benefit from an extra hour of sleep!

Again, welcome to **Best Care Practices in the Post-Acute and Long-Term Care Continuum 2022**. This year's program is outstanding, so we hope you enjoy yourselves! Congratulations to the Education Committee and FMDA staff. They have put a lot of effort into making this conference interesting, educational, and fun.

We hope you find the conference to be a valuable asset to your work.

Executive Committee, FMDA – The Florida Society for Post-Acute and Long-Term Care Medicine

President: Diane Sanders-Cepeda, DO, CMD

Chair: Rhonda L. Randall, DO

Vice President/President-Elect: Shark Bird, MD, CMD, CWSP

Immediate Past-President: Angel Tafur, MD, CMD

Secretary/Treasurer: Elizabeth Hames, MD, CMD





Welcome to Best Care Practices in the Post-Acute and Long-Term Care Continuum 2022!

The Florida Chapters of GAPNA would like to extend a warm welcome to all the Advanced Practice Nurses attending this year's *Best Care Practices in the Post-Acute and Long-Term Care Continuum 2022* conference.

FMDA, in collaboration with FL-GAPNA, Gulf Coast GAPNA, and other professional associations, has put together a well-rounded curriculum for all of us caring for the older adult in PALTC. This will be an exciting four days for all those attending.

We, as advanced practice registered nurses, embrace the opportunity to work with FMDA and participate in planning this wonderful conference. Our collaboration with physicians, pharmacists, directors of nursing, and other health care professionals is critical and essential for the betterment of our geriatric patients and loved ones. Our annual participation has provided a great opportunity to enhance knowledge and nurture mutual respect for others working in this arena.

FL-GAPNA has conducted very successful conferences prior to the pandemic. Due to COVID-19, we had postponed our biennial conferences. Hopefully, we will be able to have another awesome conference in the near future. We encourage all advanced practice registered nurses to become involved with both Florida Chapters of GAPNA. Please visit our websites at flgapna.enpnetwork.com and fgcgapna.enpnetwork.com and become a member.

On behalf of the FLORIDA Chapters of GAPNA, we welcome you!

Sincerely,

Michelle Lewis, DNP, APRN, FNP-C, GNP-C
President, FL-GAPNA



Dear FMDA Annual Program Attendees,

The Florida Geriatrics Society is honored to participate once again in FMDA – The Florida Society for Post-Acute and Long-Term Care Medicine’s 31st Annual Conference. We look forward to seeing many of our FMDA friends and FGS members during this live meeting.

We appreciate the opportunity to continue to partner and support FMDA and to participate in *Best Care Practices in the Post-Acute and Long-Term Care Continuum 2022*. As 2022 and the COVID-19 pandemic has shown us, now more than ever, the increased need for collaboration between physicians, nurse practitioners, pharmacists, and all other health care professionals is critical for the betterment of the older adult patients in Florida. The importance for health care providers to stay organized has only intensified in our rapidly changing medical professions. The FGS is pleased to continue to unite and support the efforts of the FMDA organization, particularly in light of the yet to be determined long-term impact of the SARS CoV-2 virus and the continued consolidation in health care.

The mission of the Florida Geriatrics Society is devoted to improving the quality of life and advancing the health care of older adults through education, research, networking, and improving public awareness of professionals involved with caring for the elderly. We accomplish our mission through interdisciplinary, professional teamwork, education and public policy, and collaboration with the American Geriatrics Society. Our work with FMDA is another example of how the FGS is fulfilling that mission and we consider our relationship with FMDA to be one of our most valuable assets.

Visit our website at www.floridageriatricssociety.org to find out more about our organization and benefits of membership. Please join us for our 2023 Annual Meeting as we celebrate *30+ Years of Leadership in Geriatrics*.

We look forward to seeing you there.

Sincerely,

Debra A. Danforth, DNP, APRN, FAANP
Immediate Past-President

F. Michael Gloth, III, MD, FACP, AGSF, CMD
President



P.O. Box 1403
Land O Lakes, FL 34639
www.FloridaGeriatricsSociety.org
813-996-0322



Nov. 3, 2022

Dear Colleagues,

Welcome to Best Care Practices in the Post-Acute & Long-Term Care Continuum 2022 – FMDA’s 31st Annual Conference!

The National Association of Directors of Nursing (NADONA) is very proud to be involved with this wonderful conference. Planning and implementing this conference program with partners who practice together daily has been both exciting and rewarding! Membership in this hard-working Education Committee affords everyone the equal opportunity to submit topics, speakers, and objectives in planning the programs. Working as a cohesive team, with great leadership, allows us to provide for exceptional programming.

NADONA is once again honored to work with Ian Cordes, FMDA – The Florida Society for Post-Acute and Long-Term Care Medicine, AMDA – The Society for Post-Acute and Long-Term Care Medicine, Florida Geriatrics Society, FADONA, and the Florida Chapters of GAPNA on this remarkable program!

We can only hope that after attending this program, you will gain as much knowledge and respect for each other as we did through working with these organizations.

Enjoy the speakers, meet new friends, rekindle seasoned relationships, and recharge your batteries with all of the new and exciting ideas you gain while attending this program!

On behalf of the NADONA Board of Directors,

Most Sincerely,

Sherrie Dornberger, RN, CDP, CADDCT, GDCN, CDONA, FACDONA
 NADONA Executive Director
www.nadona.org
 800-222-0539

Why Choose VITAS® Healthcare in Florida?

Experience the VITAS Difference for patient care and career opportunities.

Whether you're choosing optimal hospice care for your patients or seeking a satisfying career with an industry-leading healthcare provider, VITAS is the solution in Florida.

In addition to providing high-acuity, end-of-life care featuring unique hospice resources and expertise, VITAS is a leading Florida employer, defined by:

- The VITAS Difference—the Commitment, Compassion, and Can-Do Attitude that form the foundation of the way we work together as hospice professionals
- The VITAS Employee Promise—our promise to provide every employee with a career filled with purpose and passion, supported by the presence of authentic leaders and colleagues who promote career growth and unlimited possibilities for success

VITAS is hiring clinicians and healthcare professionals throughout Florida.

You can make a difference at VITAS. Explore openings and possibilities at [VITAS.jobs](https://www.vitasjobs.com).

VITAS®
Healthcare

VITAS.Com [f](#) [in](#) [ig](#) [t](#) | Since 1980



Annual Program Description

This program is designed to provide a review and update of major geriatric diseases, illnesses, and risks found in nursing home patients, residents of assisted living facilities, those under hospice care, and seniors living at home. Topics covered this year include: COVID-19 Skin and Long-Haulers Healing Challenges ▲ Deprescribing for Older Adults ▲ Diabetes in the Geriatric Population ▲ Effective Usage of Psychiatric Medications in Nursing Facilities ▲ EKG Abnormalities in COVID Era ▲ Geriatric Literature Review ▲ Healthcare Worker Burnout ▲ Hospice Benefit 2022 ▲ Improving PALTC ▲ Long COVID ▲ Managing Delirium ▲ Medical Care of LGBTQ+ Older Adults ▲ Medicare Billing & Coding Update ▲ Medication-Related Cases with Adverse Events ▲ Mindfulness: Taking Care of You While You Take Care of Others ▲ Moving from Pandemic to Endemic ▲ National Leaders Forum ▲ Osteoporosis ▲ Pain Management ▲ Prognostication ▲ Public Policy Update ▲ Red-Eye Rounds: PALTC & Geriatrics Clinical Quandaries ▲ Regulatory Update ▲ Specialized Care for People Living with Dementia ▲ Staff Burnout in Caring for Patients with Dementia ▲ Telemedicine Research

Target Audience

This conference is designed to educate physicians, advanced practice nurses, senior care pharmacists, consultant pharmacists, physician assistants, directors of nursing in LTC, registered nurses, and long-term care administrators, as well as geriatricians, primary care and home care physicians, physicians considering becoming long-term care medical directors, hospice medical directors, home care medical directors, and others with an interest in geriatrics and its continuum of care. The faculty includes national and regional authorities in the fields of medical direction, senior care pharmacology, post-acute and long-term care medicine, and geriatric medicine.

Annual Program Objectives

Upon completion of the Best Care Practices in the Post-Acute and Long-Term Continuum Care conference, participants should be able to:

1. Discuss the professional challenges facing medical directors, attending physicians, advanced practice nurses, consultant pharmacists, physician assistants, directors of nursing, and administrators practicing in the continuum
2. Describe the advances in theoretical and clinical knowledge impacting individuals affected by medical issues in the PALTC continuum
3. Discuss the current and emerging national issues and public policy efforts of AMDA – The Society for Post-Acute and Long-Term Care Medicine, Gerontological Advanced Practice Nurses Association, and National Association of Directors of Nursing Administration/LTC
4. Describe examples of evidence-based practice and multidisciplinary approaches to enhance outcomes in various health care settings
5. List examples of evidence-based practice as it pertains to post-acute and long-term care medicine



Continuing Education

EDUCATION COMMITTEE (2021-2022)

EDUCATION COMMITTEE CHAIR/NURSE PLANNER: Michelle A. Lewis, DNP, MSN, ARNP, FNP-BC, GNP-BC

PROGRAM DIRECTOR: Kenya Rivas, MD, FAFP, CMD; Vice Chair, Education Committee

AMDA LIAISON: Robert Kaplan, MD, FACP, CMD; Past-Chair, ABPLM; Past-President, FMDA

NADONA LIAISON: Sherrie Dornberger, RNC, GDCN, CDONA, FACDONA; Executive Director

FLORIDA CHAPTERS OF GAPNA LIAISON: Michelle Lewis, DNP, MSN, ARNP, FNP-BC, GNP-BC; President, FL-GAPNA

FLORIDA GERIATRICS SOCIETY LIAISON: Debra Danforth, DNP, APRN, FAANP; Immediate Past-President, FGS

CONSULTANT PHARMACISTS LIAISON: Rick Foley, PharmD, CPh, BCGP, FASC; Immediate Past-Chair, FL Chapter – ASCP

COMMITTEE MEMBERS: Shark Bird, MD, CMD, CWSP; F. Michael Gloth, MD, FACP, AGSF, CMD; Maria R. Gonzalez, MD, FAFP, CMD; Alfonso Gonzalez-Rodriguez, MD; Elizabeth Hames, DO, CMD; Elizabeth Hidlebaugh, MD; Leonard Hock Jr., DO, MACOI, CMD; Kimberly Jackson, PharmD, CPh; Brian Kiedrowski, MD, MBA, CPE; Simone Minto-Pennant, PharmD; Jennifer Moses-Powell, DNP, CRNP; Samantha Quigley, PharmD; Rhonda L. Randall, DO; Bernardo Reyes, MD, CMD, AGSF; Michael Samarkos, PharmD; Diane Sanders-Cepeda, DO, CMD; Niharika Suchak, MBBS, MHS, FACP, AGSF; Laurie Sheffield, ARNP, DNP; Brianna Wynne, MD

EDUCATION COMMITTEE DISCLOSURES

Rick Foley, PharmD

Full-time/Part-time Employee, CVS/Omnicare

F. Michael Gloth, MD, CMD

Full-time/Part-time Employee, AMDG Naples 100 Sr. Concierge/Consulting
Royalties, Springer Publishing

Elizabeth Hames, DO, CMD

Full-time/Part-time Employee, United Health Group

Kimberly Jackson, PharmD

Full-time/Part-time Employee, CVS/Omnicare

Rhonda Randall, DO

Stockholder, United Health Group
Full-time/Part-time Employee, United Health Group

Bernardo Reyes, MD, CMD

Grant/Research Support, Point Click Care

Kenya Rivas, MD, CMD, FAFP

Full-time/Part-time Employee, United Health Group

Diane Sanders-Cepeda, DO, CMD

Full-time/Part-time Employee, United Health Group/UHC Retiree Solutions

Please note that in addition to being presented with disclosure information about faculty, the same disclosure information is required of all Education Committee members — our planning committee. Where there are no financial interests indicated, the faculty or planning committee member had none to report. In the spirit of full disclosure, no member of this committee is a compensated conference speaker at Best Care Practices in the Post-Acute and Long-Term Care Continuum 2022.

No one with the ability to control content of this activity has a relevant relationship with an ineligible company except those listed above. These relationships have been mitigated.

CERTIFICATES OF ATTENDANCE

In order to claim credit for the sessions you attend, see the instructions on page 35. The session evaluations and the conference evaluation must be completed online before you download your Certificate of Attendance.

CME ACCREDITATION for PHYSICIANS (MDs and DOs) & PAs

Accreditation Statement: This live activity has been planned and implemented in accordance with the accreditation requirements and policies of the Accreditation Council for Continuing Medical Education (ACCME) through the joint providership of AMDA – The Society for Post-Acute and Long-Term Care Medicine and FMDA – The Florida Society for Post-Acute and Long-Term Care Medicine. AMDA – The Society for Post-Acute and Long-Term Care Medicine is accredited by the ACCME to provide continuing medical education for physicians.

Credit Designation Statement: AMDA – The Society for Post-Acute and Long-Term Care Medicine designates this live activity for a maximum of **27.5 AMA PRA Category 1 Credits™**. Physicians should claim credit commensurate with the extent of their participation in the activity.



THE SOCIETY
FOR POST-ACUTE AND
LONG-TERM
CARE MEDICINE™

CMD Credit Statement: This live activity has been pre-approved by ABPLM for a total of **15.75** management hours and **14.75** clinical hours toward certification as a Certified Medical Director (CMD) in post-acute and long-term care medicine. The CMD program is administered by the American Board of Post-Acute and Long-Term Care Medicine. Each physician should claim only those hours of credit actually spent on the activity. This program has been approved by the Florida Board of Medicine, Florida Board of Osteopathic Medicine, and Florida Physician Assistants. CE Broker Program Tracking Number **20-928545**.

American Osteopathic Association Credit: AOA recognizes this activity for AMA PRA Category 1 Credit™ as AOA Category 2 Credit.



PHARMACIST CONTINUING EDUCATION

General Pharmacist Credit: The Association for Medication Education (AME) is accredited by the Accreditation Council for Pharmacy Education as a provider of continuing pharmacy education. This knowledge-based program has been approved for 29 contact hours. Session 122 is NOT approved for pharmacist CE. Each individual session of this conference has received a separate Universal Activity Number (UAN). ACPE credit is for pharmacists only.



Universal Activity Numbers

Thursday, Nov. 3	Friday, Nov. 4	Saturday, Nov. 5	Sunday, Nov. 6
101 0854-9999-22-025-L04-P	111 0854-9999-22-035-L04-P	117 0854-9999-22-041-L01-P	125 0854-9999-22-048-L04-P
102 0854-9999-22-026-L01-P	112 0854-9999-22-036-L01-P	118 0854-9999-22-042-L99-P	126 0854-9999-22-049-L01-P
103 0854-9999-22-027-L01-P	113 0854-9999-22-037-L04-P	119 0854-9999-22-043-L04-P	127 0854-9999-22-050-L01-P
104 0854-9999-22-028-L99-P	114 0854-9999-22-038-L04-P	120 0854-9999-22-044-L01-P	128 0854-9999-22-051-L01-P
105 0854-9999-22-029-L01-P	115 0854-9999-22-039-L99-P	121 0854-9999-22-045-L04-P	
106 0854-9999-22-030-L01-P	116 0854-9999-22-040-L04-P	123 0854-9999-22-046-L04-P	
107 0854-9999-22-031-L99-P		124 0854-9999-22-047-L99-P	
108 0854-9999-22-032-L04-P			
109 0854-9999-22-033-L99-P			
110 0854-9999-22-034-L01-P			

Florida Consultant Recertification: This activity has been approved by the Florida Board of Pharmacy. CE Broker Program

Tracking Number 20-946610. Sessions #107 and 122 have not been approved for CPh. For additional information, please see the designated approved blocks in the Pharmacist CPE Information in your envelope.



ANCC: NATIONALLY APPROVED CONTACT HOURS for ADVANCED PRACTICE NURSES & LICENSED NURSES

This nursing continuing professional development activity was approved by the Ohio Nurses Association, an accredited approver by the American Nurses Credentialing Center's Commission on Accreditation. (OBN-001-91).

FLORIDA CONTACT HOURS for ADVANCED PRACTICE NURSES, LICENSED NURSES, and NURSING HOME ADMINISTRATORS

This educational program has been approved for up to 27.5 nursing contact hours and 27.5 nursing home administrator CEUs by the Florida Association Directors of Nursing Administration/LTC (Florida Board of Nursing and Florida Board of Nursing Home Administrators CE Broker Provider ID Number 50-682). Live Meeting CE Broker Tracking #20-942366 (27.5 CNEs and 27.5 CEUs). This program has NOT been submitted to NAB for NHA CEUs.



Continuing Education Credits Calculated by Profession

	<u>Session Title/No.</u>	<u>MD/DO/PA/CMD</u>	<u>ACPE</u>	<u>NP/RN*</u>	<u>NHA</u>
Thursday	101 Long COVID: State of the State	(0.75 hour) MANAGEMENT	0.75	.75	.75
	102 Healing Challenges Associated with COVID-19 Skin and Long-Haulers	(0.75 hour) CLINICAL	0.75	.75	.75
	103 Boots on the Ground: A Panel Discussion	(1.5 hours) MANAGEMENT	1.5	1.5	1.5
	104 EKG Abnormalities in PALTC in the COVID Era	(2 hours) CLINICAL	2.0	2.0	2.0
	105 Prognostication: Including Attributes and Predictors of Long COVID	(1 hour) CLINICAL	1.0	1.0	1.0
	106 The Importance of Deprescribing for Older Adults	(1 hour) CLINICAL	1.0	1.0	1.0
	107 Mindfulness: Taking Care of You While You Take Care of Others	(1 hour) MANAGEMENT	1.0	1.0	1.0
	108 Update on Telemedicine Research	(1 hour) MANAGEMENT	1.0	1.0	1.0
	109 Coping with Healthcare Worker Burnout	(1 hour) MANAGEMENT	1.0	1.0	1.0
	110 Specialized Co-Management Care for People Living with Dementia	(1 hour) MANAGEMENT	1.0	1.0	1.0
Friday	111 Keynote Address: Florida State of Medicine: How we got here, where we are, and how to improve	(1 hour) MANAGEMENT	1.0	1.0	1.0
	112 Managing Delirium in PALTC	(1 hour) CLINICAL	1.0	1.0	1.0
	113 Moving from Pandemic to Endemic	(1 hour) MANAGEMENT	1.0	1.0	1.0
	114 AMDA Public Policy Update	(1 hour) MANAGEMENT	1.0	1.0	1.0
	115 Recognizing Burnout in Those Caring for Patients with Dementia	(1 hour) MANAGEMENT	1.0	1.0	1.0
	116 Improving PALTC	(1 hour) MANAGEMENT	1.0	1.0	1.0
Saturday	117 Red-Eye Rounds: PALTC & Geriatrics Clinical Quandaries	(1 hour) CLINICAL	1.0	1.0	1.0
	118 National Leaders Forum	(1.5 hours) MANAGEMENT	1.5	1.5	1.5
	119 Best Practices for Pain Management in PALTC	(1 hour) CLINICAL	1.0	1.0	1.0
	120 Get Smart About Diabetes in the Geriatric Population	(1 hour) CLINICAL	1.0	1.0	1.0
	121 AHCA Regulatory Update	(1 hour) MANAGEMENT	1.0	1.0	1.0
	122 Medicare Billing & Coding Update	(1 hour) MANAGEMENT	0	1.0	1.0
	123 Medical Care of LGBTQ+ Older Adults in PALTC	(1 hour) CLINICAL	1.0	1.0	1.0
	124 Keynote Address: State of the Hospice Benefit 2022	(1 hour) MANAGEMENT	1.0	1.0	1.0
Sunday	125 Geriatric Literature Review	(1.5 hours) CLINICAL	1.25	1.5	1.5
	126 A Case-Based Approach to Optimal Pharmacotherapy	(1 hour) CLINICAL	1.0	1.0	1.0
	127 Breaking Free from Osteoporosis	(1.5 hours) CLINICAL	1.25	1.5	1.5
	128 Effective Usage of Psychiatric Medications in Nursing Facilities	(1 hour) CLINICAL	1.0	1.0	1.0
<u>Total CME/CE hours approved:</u>		30.5	30.5	29.0	30.5
<u>Maximum CME/CE hours to be earned:</u>		27.5	27.5	28.0	27.5

May be subject to rounding.

FMDA's 31st Annual Conference Faculty

Jonathan Seth Appelbaum, MD

Dr. Jonathan Seth Appelbaum is an internist, geriatrician, and HIV expert. He currently holds the Laurie L. Dozier Jr., MD, Education Director and Professor of Internal Medicine at Florida State University College of Medicine, where he also serves as chair of the Department of Clinical Sciences.

He is chair of the board of directors of the American Academy of HIV Medicine. He serves on the board of directors of HealthHIV, a national organization supporting advocacy, education, capacity building, and research for individuals, organizations, and communities for persons living with HIV. He has spoken on or been a member of panels on topics such as health issues in the older LGBT patient, HIV and aging, and LGBTQ+ curricula in undergraduate medical education. He served as the co-principal investigator for the HIV and Aging Treatment Consensus Project and was the founding co-medical editor for www.HIV-Age.org.

Dr. Appelbaum earned his MD at the University of Miami School of Medicine and completed his internal medicine residency at the University of Massachusetts Medical Center. Prior to relocating to Florida, he held positions at Fenway Community Health and Brigham and Women's Hospital in Boston, MA. His interests focus on LGBT health disparities and aging and HIV.

Wilfredo C. Aqui Jr., PharmD, MT

Dr. Wilfredo Aqui has been the District 5A, Florida clinical manager for CVS/Omnicare since 2001 and has been with Omnicare for 28 years. He manages 27 clinical/consultant pharmacists in Florida and is the consultant of record for two skilled nursing facilities. Dr. Aqui also serves as a clinical associate professor for the University of Florida. He received both his bachelor of health science in medical technology (1987) and doctorate of pharmacy (1993) from the University of Florida before completing his residency in ambulatory medicine and family practice at Florida Hospital in Orlando (1994). After his residency, Dr. Aqui chose to practice in long-term care and became the Florida clinical manager for CVS/Omnicare in 2001. Dr. Aqui is an avid golfer and a lifelong Florida Gator fan. He is a passionate advocate for our elderly in the long-term care setting and has worked his entire career as a consultant pharmacist in long-term care.

Robin Arnica, RN, FACDONA, CDONA/LTC, IP-BC

Robin Arnica is the director of infection prevention for Erickson Senior Living, where she oversees the infection prevention team that serves 28,000 seniors and 14,000 employees throughout the country. Over the past 2.5 years Robin worked to develop an infection prevention program to respond to the pandemic, as well as a risk-based program that aims to focus on a culture of prevention.

She has served as a director of nursing in the skilled nursing and long-term care arena for more than 25 years. The current president of the National Association of Directors of Nursing Administration (NADONA), she served previously on the national board of trustees as corresponding secretary and vice president. She is a fellow in the Academy of Certified Directors of Nursing Administration, master trainer for NADONA's certification examination prep course, and board-certified infection preventionist.

Robin was honored in 2007 as the NADONA Nursing Administrator of the Year for the Northeast region and was the overall national recipient, and received the Erickson Senior Living Leader of the Year in 2014. She developed the Erickson Senior Living Antibiotic Stewardship program that was recognized by Ocean Spray in 2018 for its Antibiotic Stewardship Best Practices Award.

She serves on many other committees and has numerous activities geared toward the advancement of excellence and leadership in senior living and LTC.

Alex Bardakh, MPP, PLC, CAE

Alex Bardakh is director of public policy and advocacy at AMDA – The Society for Post-Acute and Long-Term Care Medicine. Earlier, he spent three years at AMDA serving as the health policy analyst working on physician payment, quality, and care transitions issues. During that tenure, he developed resources on the Physician Quality Reporting Initiative and Value-Based Purchasing Program. Prior to his return to AMDA, he spent two years as the government relations and advocacy coordinator for the American Urological Association. The author of "Are We Finally Ready for Medicare-Pay Reform?" (Caring for the Ages, August 2013), he was staff project lead for two AMDA white papers on care transitions.

Elizabeth Borer, BS, RN

Elizabeth Borer is a chief nursing officer in long-term care and Region V vice president for the Florida Association Directors of Nursing Administration/LTC. A former Navy hospital corpsman, she was previously senior vice president of clinical operations for Greystone Health Network.

Liz brings with her more than 20 years of nursing practice, which includes 15 years of experience in long-term care. She has served in a variety of roles, including director of clinical education, director of nursing, regional nurse consultant, multi-facility oversight as a clinical quality specialist for 82 facilities in Florida, and senior vice president of clinical operations of more than 42 facilities in Florida, Missouri, and Illinois.

Combining her clinical, compliance, and operational background, Liz has supported her team of staff to address areas such as: advancement in clinical care management, key performance metrics, enhancement of operational efficiency, survey preparedness/regulatory management, risk mitigation, quality assurance performance improvement strategies, implementation of policies and procedures for infection prevention and control pre- and post-COVID-19, educational programming and development, policy and procedure development to improve patient care outcomes, and initiating the implementation of artificial intelligence technology that has proven to streamline clinical operations.

Liz currently serves as a regional vice president for FADONA, with the continued mission to support current and aspiring leaders through professional development and networking, board certification and credentialing, and clinical expertise related to the care of residents in the post-acute care continuum. She also serves as a member of the Senior Clinicians Council for the Florida Healthcare Association.

Carmelle Casimir, APRN, DNP

Dr. Carmelle Casimir is a nurse practitioner with a solid background in managerial and clinical care. A results-oriented professional, she has strong leadership skills, embraces teamwork, and displays independence, confidence, high energy, and physical, mental, and emotional strength. She is culturally competent, well informed, and constantly looking to innovate.

Dr. Casimir has been in the medical arena for more than 20 years. She earned her bachelor of science in nursing and master's at Florida Atlantic University, her RN at Broward Community College, and her doctorate at Chatham University in Pennsylvania. She has been senior clinical services manager with Optum for 10 years. Her passion is caring for her geriatric residents in the skilled nursing facility. She is a member of AANP, HHPN, and NPCPB.

Christine Cauffield, PsyD

Dr. Christine Cauffield has served as president and CEO of organizations providing integrated health services for children through seniors, including a corporation that provides inpatient, acute psychiatric care to seniors in crisis. She received her doctorate degree in clinical psychology from Florida Institute of Technology and completed her internship and post-doctoral residency at Harvard Medical School, where she specialized in geriatric neuropsychology. She is president of Florida Council on Aging and Florida Association of Managing Entities, and serves on the executive board of Smart Justice of Florida. Dr. Cauffield is appointed to the Florida Department of Elder Affairs State Plan Advisory Group.

She was recently appointed to the White House National Drug Control Policy National Advisory Panel to identify and define evidence-based public health recommendations for the prevention, treatment of, and recovery from substance use disorder in the United States for the White House's Office of National Drug Control Policy as it prepares President Biden's drug control strategy.

Dr. Cauffield is a Leadership Florida alumna. She has written book chapters on senior behavioral health issues in addition to numerous articles. She has appeared on NBC Nightly News, ABC PrimeTime, AP Press, and several national and international media. Her clinical expertise includes substance abuse, trauma recovery, grief and loss issues, integrated health, and brain disease/disorders. She is a sought-after speaker and frequently presents at state, national, and international conferences.

She is currently CEO of LSF Health Systems, the managing entity comprising 67 behavioral health care organizations spanning a 23-county region. The network serves more than 1.2 million clients annually with a budget of \$225 million in north central and northeast Florida. Dr. Cauffield represents the United States for EuComs, an organization composed of 36 European countries dedicated to advancing community-based behavioral healthcare in Europe.

Dr. Cauffield's proven track record of management success has resulted in several company turnarounds. Additionally, her vision and strategic planning allow organizational growth and expansion, with innovative clinical programs. She has developed national best-practice models that include in-home care, outpatient, inpatient, and acute-care hospital-based units. She has successfully integrated healthcare services that encompass both urban and rural community settings. A passionate healthcare advocate, she is adept at working with local, state, and national governmental officials to champion policy and funding initiatives. Dr. Cauffield incorporates philanthropic fund-raising and effectively engages the communities she serves. She has successfully worked with local, state, and national policymakers on critical healthcare initiatives.

Pari Deshmukh, MD

Dr. Pari Deshmukh graduated from a renowned psychiatry residency program at University Hospitals Case Medical Center, where he served as a chief resident. He completed certificate courses in various psychotherapy treatment modalities and is triple board certified in general psychiatry, addiction medicine, and integrative holistic medicine. A fellow of the American Psychiatric Association and American Society of Addiction Medicine, he has received various awards and published and presented his work at reputed journals and conferences. He has worked in settings such as medical hospitals, clinics, nursing homes, assisted-living facilities, and group homes.

Swati Gaur, MD, MBA, CMD, AGSF

Dr. Swati Gaur is medical director of New Horizons Nursing Facilities with the Northeast Georgia Health System and CEO of Care Advances Through Technology, a technology innovation company. She is on the EMR transition and implementation team for the health system, providing direction to EMR entity adaption to the LTC environment.

She has also consulted with post-acute long-term care companies on optimizing medical services into PALTC facilities, integrating medical directors and clinicians into the QAPI framework and creating frameworks of interdisciplinary work in the organization. In addition, Dr. Gaur established the Palliative Care Service Line at the Northeast Georgia Health System and is an attending physician in several nursing facilities. Earlier, Dr. Gaur was a medical director at the LTC in the Carl Vinson VA Medical Center and a member of the G&EC for VISN 7.

Dr. Gaur attended medical school in Bhopal, India, and did her residency in internal medicine at St. Luke's–Roosevelt Medical Center in New York. She completed her fellowship in geriatrics at the University of Pittsburgh Medical Center and is board certified in internal medicine, geriatrics, and hospice and palliative medicine. She went on to earn her master's in business administration at Georgia Institute of Technology, with a concentration in management of technology. In March 2022, she was named Medical Director of the Year by AMDA – The Society for Post-Acute and Long-Term Care Medicine.

Suzanne Gillespie, MD, CMD, RD, FACP

Dr. Suzanne M. Gillespie is associate professor of medicine in the Division of Geriatrics/Aging and associate professor of emergency medicine at the University of Rochester School of Medicine and Dentistry. She is associate chief of staff for Geriatrics Extended Care & Rehabilitation and medical director of two community living centers in the Finger Lakes VA Healthcare System. She coordinates the research and development program of the healthcare system and is lead physician of the patient safety program. She is board certified in internal medicine, geriatric medicine, and hospice and palliative medicine. Dr. Gillespie is the current president of AMDA – The Society for Post-Acute and Long-Term Care.

F. Michael Gloth III, MD, FACP, AGSF, CMD

Dr. F. Michael Gloth is an associate professor of medicine in the Division of Geriatric Medicine and Gerontology at Johns Hopkins University School of Medicine and a clinical professor of geriatrics at Florida State University College of Medicine. He is president and CEO of AMDG Naples 100 Senior Concierge and Consulting. He is the former director of geriatrics ambulatory services at the Johns Hopkins Medical Institutes. Dr. Gloth, a Baltimore native, received his BS in chemistry and biology from the College of William and Mary in Virginia and his MD from Wayne State University School of Medicine. He completed his internship and residency in internal medicine at the Union Memorial Hospital in 1987 and a three-year fellowship in geriatric medicine and gerontology at Johns Hopkins University School of Medicine in 1990. After working as a full-time faculty member there until 1993, he left to chair the Division of Geriatrics at Union Memorial Hospital in Baltimore, where he also developed and ran the Geriatrics Fellowship Program. Subsequently, he ran a successful practice in geriatrics medicine as president of Victory Springs Senior Health Associates and served later as the corporate medical director/senior vice president of medical affairs for Mid-Atlantic Health Care.

Dr. Gloth, a fellow in the American College of Physicians and American Geriatrics Society, served on the Advisory Committee to the 2005 White House Conference on Aging, National Advisory Council on Aging to NIH, and national guideline panels for pain relief, osteoarthritis, osteoporosis, vitamin D in older adults, and for revision of the Beers Criteria on drugs to be avoided in older adults. Prior to his move to Naples, he served as president of the Baltimore City Medical Society and Hospice Network of Maryland, as a member of the Medical and Scientific Advisory Board of the Greater Maryland Chapter of the Alzheimer's Association, and as the first geriatrician on the Maryland Board of Physicians.

Currently, he serves on the boards of the Health in Aging Foundation and FMDA – The Florida Society for Post-Acute & Long-Term Care Medicine, and is president of the Florida Geriatrics Society. His publications are extensive, including medical informatics, inpatient geriatric units, medication management in older adults, Handbook of Pain Relief in Older Adults, and an International Book Award winner, Fit at Fifty and Beyond. Dr. Gloth has been the recipient of numerous grants and awards, including multiple listings in Who's Who and in Best Doctors in America, and, in 2006, he was named Clinician of the Year by the American Geriatrics Society. Most importantly, he is happily married and the father of four lovely daughters.

Justin C. Hess, PT, DPT, OCS

Dr. Justin Hess is a physical therapist who specializes in orthopedic rehabilitation at the outpatient AdventHealth Sports Medicine and Rehabilitation clinic in Winter Park, FL. He earned his doctorate in physical therapy from the University of Central Florida in Orlando. He serves AdventHealth as the orthopedic research manager, where he executes IRB research study approved protocols and analyzes patient-reported outcome metrics to help standardize and drive clinical quality improvement initiatives across 36 outpatient rehab centers. He is board certified as an orthopedic clinical specialist through the American Board of Physical Therapy Specialties and is seeking candidacy to become dually certified in geriatrics for 2023. He loves mentoring clinicians as an APTA-credentialed clinical instructor and as faculty for the Post-Professional Residency Program in orthopedic physical therapy. He presents both locally and nationally at conferences and continuing education courses surrounding safe exercise progression, fall prevention, and bone health.

Elizabeth Hidlebaugh, MD

Dr. Elizabeth Hidlebaugh joined AMDG Naples 100 in 2021 after completing a geriatrics fellowship at Duke University. Her passion for geriatrics blossomed in college, when she co-authored her first paper in The Journal of Gerontology & Geriatric Research. After medical school she completed her internal medicine residency at Florida Atlantic University, where she solidified her geriatrics focus as a major contributor to a geriatrics screening book chapter in Primary Care: Clinics in Office Practice - Prevention and Screening. Dr. Hidlebaugh has served on multiple committees in the American Geriatrics Society and contributed to national geriatric board review preparation materials. Her efforts toward quality improvement led to advances in her primary care clinic related to polypharmacy in older adults.

Dr. Hidlebaugh was the recipient of the prestigious Golden Stethoscope Award, Outstanding Clinic Resident, Health Fair Outreach award, and American College of Physicians Florida Chapter Outstanding Florida Atlantic University Resident award. During her fellowship in geriatrics at Duke University School of Medicine, she presented research projects at the American Geriatrics Society and AMDA –The Society for Post-Acute and Long-Term Care national meetings.

She continues to be a champion for prevention and screening efforts in older adults, the reduction of polypharmacy and adverse effects of medications, fall prevention, and establishing clear health goals and preferences for seniors. Her practice focuses on functional survival and the preservation of quality of life in her older adult patients.

Her certifications include internal medicine and geriatrics. She serves as an attending physician at the NCH and Physician Regional hospital systems in Collier County, where she follows her patients when hospitalized. In addition to her national medical society memberships, she is a lifetime member of the Florida Geriatrics Society and FMDA.

Dr. Hidlebaugh has been recognized by professors and colleagues for her compassion, reliability, and unwavering dedication to the best possible care for her patients.

Ginny Hoar, PharmD, BCGP

Dr. Ginny Hoar is the clinical manager for the southern half of Florida for Omnicare, a CVS Health company, and has worked in the LTC industry for 20 years. As clinical manager she is responsible for overseeing clinical services, including managing the consultant pharmacists, implementing clinical programs, managing facility formulary, and providing education to customers and staff.

She received her doctor of pharmacy degree in 2000 from the University of Florida. Prior to joining Omnicare in 2004, she worked in industry and hospice.

Leonard R. Hock Jr., DO, MACOI, CMD

Dr. Leonard Hock is the former chief medical officer of Harbor Palliative Care and Advanced Illness Management, Division of TrustBridge Health. Prior, he spent more than 20 years as president of an internal medicine practice dedicated to the care of frail elderly, specialized geriatric care, and hospice and palliative medicine.

Dr. Hock developed a palliative case management model for acute care hospitals that has proven to be successful in decreasing the length of stay and acute care costs, while increasing the comfort measures for the end-of-life patient and support to family members.

During his medical career in Kansas City, he was the health care reporter for the FOX 4 Television News. For 13 years he was seen daily on “Housecalls” by thousands of viewers who watched him speak on current and pertinent health topics. He is an excellent public speaker and advocate of hospice and palliative care within the community. He continues to be a frequent local, regional, and national presenter on medical, scientific, and cultural issues.

A veteran of the United States Army, Dr. Hock held several physician executive positions prior to his appointment at TrustBridge Health.

Dr. Hock completed his medical degree from University of Health Sciences-College of Osteopathic Medicine in Kansas City, MO, in 1976. He completed an internship at Dallas Osteopathic Hospital, Texas, from 1976 to 1977 and his residency at Lakeside Hospital in Kansas City from 1977 to 1980.

Board certified in internal medicine, geriatrics, and hospice and palliative medicine, he is a diplomat of the American Board of Hospice and Palliative Medicine and a member of the American Academy of Hospice/Palliative Medicine. He is a past-president and former chair of FMDA – The Florida Society for Post-Acute and Long-Term Care Medicine and chair of the Hospice and POLST committees.

Gregory James, DO, MPH, CMD

Dr. Gregory James is a senior medical director for the north region of the U.S. and the Florida market with Optum. He works with the clinical teams who follow and manage the assisted-living, post-acute, and long-term care nursing home residents enrolled in UnitedHealthcare Medicare Advantage Plans.

He is a distinguished fellow of the National American College of Osteopathic Family Physicians and has been selected as the National Educator of the Year by this organization. In addition, he served as the 2013 president of the Florida Osteopathic Medical Association.

Dr. James received his doctor of osteopathic medicine and master's degree in public health from Nova Southeastern University in Fort Lauderdale, FL. He completed his residency in family medicine at Sun Coast Hospital in Largo, FL, and is board certified in family medicine and geriatrics by the American Osteopathic Association. He is also certified by the American Board of Post-Acute and Long-Term Care Medicine.

Nicholas James, PhD

Dr. Nicholas James is a clinical psychologist with the Orlando VA Healthcare System. Prior to his current position, he was a graduate researcher with the Orlando Later-Life Developmental Research (OLDeR) Lab at the University of Central Florida, where he earned his PhD.

His work has addressed a range of topics related to aging and caregiving, including cerebrovascular risk factors, LTC facility outreach programs, profiling understudied caregiver groups, and improving the assessment and intervention of caregiver health outcomes. His most recent line of research resulted in the development and validation of the Informal Caregiver Burnout Inventory (ICBI). Dr. James continues to work with researchers and community clinicians to improve the detection and intervention of caregiver burnout.

Paul Katz, MD, CMD

Dr. Paul Katz is a widely published author and noted speaker on aging issues. He graduated with an MD from the University of Michigan and completed a geriatric medicine fellowship from SUNY Buffalo at the VA Medical Center in Buffalo, NY.

Before coming to the FSU College of Medicine in May 2015, he was a professor in the Department of Medicine at the University of Toronto. He previously served as chief of the Division of Geriatrics/Aging at the University of Rochester School of Medicine and for 16 years was medical director at Monroe Community Hospital, a highly regarded academic nursing home in Rochester, NY. He also spent five years as chief of staff for research at the Canandaigua Veterans Administration Medical Center and Rochester VA Clinic.

Dr. Katz is past-president of AMDA – The Society for Post-Acute and Long-Term Care Medicine. He has co-edited 11 books and numerous scholarly publications.

Jennifer Kim, DNP, GNP-BC, GS-C, FNAP, FAANP

Dr. Jennifer Kim is a certified gerontological nurse practitioner and professor of nursing at Vanderbilt University School of Nursing, where she teaches in the adult-gerontology primary care nurse practitioner program. She is the school's principal investigator of the Middle Tennessee Geriatric Workforce Enhancement Program. Dr. Kim is the current president of the Gerontological Advanced Practice Nurses Association.

Joshua D. Lenchus, DO, RPh, FACP, SFHM

Dr. Joshua Lenchus holds a pharmacy degree from the University of Florida, and graduated from Nova Southeastern University College of Osteopathic Medicine. He completed his internal medicine residency at Jackson Memorial Hospital in Miami. Subsequently, he worked as a hospitalist for the University of Miami Miller School of Medicine, where he held the rank of associate professor of medicine, anesthesiology, and radiology.

From 2007 to 2016, he also served as an associate program director for the internal medicine residency. Currently, he is the chief medical officer for Broward Health in Fort Lauderdale. One of Dr. Lenchus's areas of interest is patient safety. In 2007, he developed a novel curriculum centered on simulation-based invasive bedside procedural instruction. The program has transformed the way procedures are taught and performed, decreasing complications and leading to safer patient care. Recognized as a national expert, he has spoken across the country and conducted numerous workshops at various conferences, garnered more than \$2 million in grant funding, and his team's work has been published in peer-reviewed journals.

A notable expert in several medical fields, he has presented on opioids and controlled substances locally, regionally, and nationally for several years. During the COVID-19 pandemic and other public health issues, he has been a frequent presence in the media, having been interviewed by the major local new stations in the southeast Florida market, for local and national print, and on radio, including NPR.

Outside the hospital, Dr. Lenchus serves as a leader in organized medicine at multiple levels, including as past-president of the Florida Osteopathic Medical Association, president of the Florida Medical Association, past-regent and current fellow of the American College of Physicians, and senior fellow of the Society of Hospital Medicine.

He is a recipient of the Soref Jewish Community Center's Humanitarian of the Year, Broward College's Alumni of

Distinction award, Florida Osteopathic Medical Association's Physician of the Year, Hillsborough County Osteopathic Medical Society's Presidential Achievement award, Florida Board of Osteopathic Medicine Board Chair's award, and was a faculty inductee into Alpha Omega Alpha honor medical society.

David A. LeVine, MD, CMD

Dr. David LeVine has been medical director at Menorah Manor in St. Petersburg, FL, for 27 years and is the current chief medical officer. In addition, he is medical director of Arden Courts of Largo and geriatric clinical preceptor for three residency programs in St. Petersburg. He served as clinical associate professor of Kansas City University of Medicine and Biosciences College of Osteopathic Medicine and is an adjunct clinical professor at Lake Erie College of Osteopathic Medicine. He served on the board of FMDA – The Florida Society for Post-Acute and Long-Term Care Medicine from 2011 to 2013 and was named Medical Director of the Year by AMDA – The Society for Post-Acute and Long-Term Care Medicine in 2016.

Michelle A. Lewis, DNP, APRN, FNP-BC, GNP-BC

Michelle Lewis has been in nursing for more than 25 years. Her work experience ranges from a staff nurse in acute care to an advanced registered nurse practitioner specializing in family medical and mental healthcare. Her expertise includes diabetic education, psychiatry, hospice, and palliative care. Michelle earned her family nurse practitioner degree from the University of Central Florida in 2005. She received her Doctorate of Nursing Practice degree from Capella University in September 2021. Dr. Lewis is currently attending Florida State University's Post Master's Psychiatric Mental Health Nurse Practitioner Certificate program.

Her passion is assisting the community in reaching optimal physical and mental health. Dr. Lewis enjoys mentoring and educating other health care professionals. Because of her hard work and dedication to her field, she received the SAGES award for clinical excellence in 2017, and was nominated for a Super Hero award in 2018. In her spare time, she participates in annual walks in her community to raise money for breast cancer and Alzheimer's disease research as well as educates the public on advance directives during local health fairs.

Dr. Lewis has been a nurse practitioner with Optum for the past eight years. She serves on the FMDA Board of Directors and chairs FMDA's Education Committee. Dr. Lewis is also president of Florida GAPNA.

Simone Minto-Pennant, PharmD, BCPS, CPh

Dr. Simone Minto-Pennant received her doctor of pharmacy degree from Florida A&M University in 1997 and completed her pharmacy practice residency at AdventHealth Orlando in 1998. She worked as a clinical pharmacist at AdventHealth-East Orlando, where she partnered with the Infectious Disease Team on the development of the Community-Acquired Pneumonia (CAP) Guideline and IV to PO initiative. She served as clinical coordinator of internal medicine and infectious disease for three years, maintaining the hospital's antibiogram and developing therapeutic guidelines.

Dr. Minto-Pennant has been employed at the Orlando VA Healthcare System for over 15 years, where she served as the clinical pharmacy specialist for the VA's long-term care facility for over nine years and then in the Anticoagulation Specialty Clinic. She obtained her pharmacy consultant license in 1998 and has been board certified in pharmacotherapy since 2011. Recently, she established the opening, licensure, and operation of the Lake Baldwin VA Pharmacy under the auspices of the Alwyn C. Cashe State Veteran's Nursing Home. Her practice base spans a broad area that includes acute care, home infusion, and long-term care.

Michelle Moccia, DNP, ANP-BC, GS-C

Dr. Michelle Moccia is the past-program director of Michigan's first Senior ER, which opened in July 2010 at St. Mary Mercy Hospital. The ER received ACEP Level 1 Geriatric Emergency Department Accreditation in 2019 and achieved accreditation renewal in 2022 — one of 22 in the U.S. to earn that status. Besides working in the Emergency Department, she also performs comprehensive geriatric assessments. A past-president of Gerontological Advanced Practice Nurses Association, she became certified as a gerontological specialist "GS-C" from the Gerontology Nursing Certification Commission.

Dr. Moccia has been a registered nurse since 1975. She has devoted more than four decades of her life to emergency room nursing, nurse training, and partnering with EMS agencies, community groups, and senior care facilities to promote the wellness and special care needs of older adults.

She is also chair of the Emergency Nurse Association Geriatric Committee, which is responsible for the GENE (Geriatric Emergency Nurse Education) modules, Screening Tools for Older Adults in the Emergency Care Setting (Topic Brief), and Geriatric Emergency Toolkit for Emergency Departments seeking ACEP geriatric emergency accreditation.

David A. Nace, MD, MPH, CMD

Dr. David Nace is an associate professor and clinical chief of geriatric medicine at the University of Pittsburgh. He also serves as the chief of medical affairs for UPMC Senior Communities. Dr. Nace's research focuses on outbreaks and infections in older adults, including COVID-19, and antimicrobial stewardship in the long-term care setting.

Dr. Nace is a past-president of AMDA – The Society for Post-Acute and Long-Term Care Medicine. He served as member of the White House Coronavirus Commission on Safety and Quality in Nursing Homes and on numerous state and national scientific and expert panels.

Naushira Pandya, MD, CMD, FACP

Dr. Naushira Pandya is professor and chair of the Geriatrics Department at Nova Southeastern University College of Osteopathic Medicine, and director of the Geriatrics Education Center. She directs the Geriatrics Medicine Clinic at NSU COM and is the medical director of Avante at Boca. In addition, she oversees the training of medical students, residents, and fellows in geriatrics, and is a research mentor to students, residents, and faculty.

She completed her medical training at University College Hospital in London, England; her internal medicine residency in London and Maricopa Medical Center in Phoenix, AZ; and her fellowship in endocrinology and metabolism and geriatrics at the University of Michigan. Dr. Pandya is board-certified in internal medicine, geriatrics, and endocrinology and metabolism.

On a state and national level, Dr. Pandya is a past-president of AMDA – The Society for Post-Acute and Long-Term Care Medicine, past-chair of the Clinical Practice Committee and the Clinical Practice Guideline Steering Committee, and treasurer of the Broward County Area Agency on Aging. She has participated in the development of multiple clinical practice guidelines and position statements and was chair of the AMDA's CPG on Diabetes Management and co-chair of the Osteoporosis and Fracture Prevention CPG.

Dr. Pandya is a recognized authority, author, and national and international speaker in the area of management of diabetes in the elderly. Her other research interests include anemia, pituitary dysfunction, and frailty. Dr. Pandya also holds the distinction of being a Fulbright Senior Specialist Scholar in Geriatrics in Slovakia in 2009.

Michelle Panlilio, DNP, GNP-BC

Dr. Michelle Panlilio is the National Lead Dementia Care Specialist (DCS) in the UCLA Alzheimer's and Dementia Care (ADC) Program, where she has been a DCS since 2013. She graduated with a bachelor's degree in nursing from Mount St. Mary's College and completed her master's and doctoral degree from UCLA. Prior to joining the ADC program, Dr. Panlilio worked in internal medicine, cardiology, dermatology, and clinical research trials for Alzheimer's disease. While Dr. Panlilio continues to see patients in the Westwood and Santa Monica offices, she serves as the national lead DCS for the dissemination efforts of the UCLA ADC Program funded by the John A. Hartford Foundation. She is also the lead DCS for the Dementia Care Aware Initiative, a collaborative effort with the California Department of Health Care Services and several University of California Healthcare systems, funded by a grant developed in response to Senate Bill 48.

Meenakshi Patel, MD, FACP, MMM, CMD

Dr. Meenakshi Patel is a clinical associate professor at Wright State University in Dayton, OH, a practicing physician at Valley Medical Primary Care, a principal investigator at Valley Medical Research, and medical director at several nursing homes. She teaches internal medicine and geriatrics to medical students, internal medicine and family medicine residents, and fellows and geriatrics.

She has been very active with the American Medical Directors Association in several roles, including writing clinical practice guidelines on the management of diabetes in the long-term care setting. She is also faculty for the core curriculum developed by AMDA/PALTC for physicians who want to get certified as medical directors. She has served as president of the Ohio Medical Directors Association.

Dr. Patel earned her medical degree at the University of Bombay, India. She completed a residency in internal medicine at Sinai Hospital in Baltimore, MD, and is board-certified in internal medicine, geriatrics, and hospice and palliative care.

Bernardo J. Reyes, MD, CMD, AGSF

Dr. Bernardo Reyes is a certified medical director and geriatrician. After finishing his training in internal medicine, he was appointed as faculty at Harvard University and joined the staff of Massachusetts General Hospital, where he created a co-managed geriatric-trauma orthopedic service. Later, he became the first Charlotte Bloomberg Fellow in Geriatric Medicine at Harvard Medical School and completed formal training in geriatrics.

Following his fellowship, he joined the staff of Cleveland Clinic, where he worked in the Geriatric Medicine Unit. He transitioned to Florida Atlantic University, where he was instrumental in building a geriatric clinical practice across the different care settings and developing learning and research opportunities for IM residents and medical students while serving as associate director of the IM Residency Program. In addition to training internal medicine residents, he served as the physician advisor and vice-chair of medicine for Delray Medical Center.

His scholarly activity includes seven chapters in textbooks, including the last two editions of Harrison's Principles of Internal Medicine. He has multiple editorials and letters to the editor in different journals, including the New England

Journal of Medicine, as well as multiple original peer-reviewed research publications and hundreds of posters and oral presentations in regional, national, and international venues. His current research portfolio is focused in the areas of safe transitions of care of at-risk older adults with cognitive impairment and early identification of sepsis in nursing homes.

Diane Sanders-Cepeda, DO, CMD

Dr. Diane Sanders-Cepeda is a senior medical director for UnitedHealthcare Retiree Solutions, responsible for clinical strategy, quality improvement, clinical program development, and innovation. She has expertise in behavioral health solutions, social determinants of health integration into clinical models, post-acute and long-term care medical management and system development, and hospice and palliative care models. She works collaboratively with employers and plan sponsor groups nationally to address quality, affordability, and care delivery for their retirees.

Dr. Sanders-Cepeda is a geriatrician and certified medical director who has focused her career on geriatric care across the post-acute and long-term care continuum. She began her career at Nova Southeastern University as an assistant professor in the Department of Geriatrics. Her passion for program development and the practical application of medical models led her to start her own medical practice, which focused on geriatric medical care, resource management, and transitions of care across the post-acute and long-term care continuum. As Dr. Sanders-Cepeda grew her practice, her expertise in geriatric medicine lead her to create an inpatient geriatric care unit at South Florida Hospital, develop palliative care initiatives for home healths and SNFs, and serve in the capacity of physician advisor and medical director for multiple skilled nursing facilities, inpatient units, and hospice groups. Dr. Sanders-Cepeda then transitioned into UnitedHealth Group as an Optum medical director for the South Florida market. While at Optum, she used her skills to focus on clinical strategic planning, educational initiatives, and clinical development of Optum's advanced practice clinicians.

Dr. Sanders-Cepeda is an active member of the American Medical Directors Association. She serves on AMDA's board of directors and is chair of AMDA's Online Education Subcommittee. She sits on the Program Planning Subcommittee and the Education Committee. On the state level, Dr. Sanders-Cepeda remains an active member of the Florida Medical Directors Association and serves as president of the organization and chair of FMDA's Journal Club.

Dr. Sanders-Cepeda also serves on the statewide Medical Care Advisory Committee for the state of Florida upon appointment in 2019 by the secretary of state. Dr. Sanders-Cepeda has presented regionally and nationally on a multitude of topics.

Pamela Scarborough, PT, DPT, MS, CWS, CEEAA

Dr. Pamela Scarborough is the vice president of clinical affairs for American Medical Technologies. Her career spans over 40 years across the continuum of care. Board certified as a wound specialist by the American Board of Wound Management, she has been published in various wound management books and periodicals. She has served on multiple wound-related boards, is a fellow of the Association for Advanced Wound Care, has served on multiple wound-related conference planning committees, and presents nationally and internationally on topics related to wound prevention and management.

Dr. Scarborough is founding faculty of the Wound Certification Prep Course, a board certification educational program designed to assist clinicians in passing their wound certification board exams, which she has taught for 16 years. She has the privilege of educating health care professionals across licensure and clinical focus from CNAs to physicians, nurses, therapists, industry partners, and surveyors.

Dr. Scarborough holds a license in physical therapy in Texas and her current focus is improving clinical outcomes for the post-acute care settings, specifically long-term care facilities in wound prevention and management.

Joseph Shega, MD

Dr. Joseph Shega is board certified in geriatric and hospice and palliative medicine and maintains an academic appointment at the University of Central Florida as an associate professor of medicine. The first 15 years of his career was in academic medicine at Northwestern University and the University of Chicago doing clinical care, education, and research, including NIH funding around serious illness and dementia care. For the past six years Dr. Shega has practiced in Central Florida, initially as a regional medical director, then as the national medical director, and more recently as the chief medical officer for VITAS Healthcare.

In his current role, Dr. Shega has been instrumental in adapting a "mobile first" platform to bring technology to the bedside in patients' homes to improve clinical care through enhanced clinical documentation, medication management, care coordination, and most recently virtual reality as an alternative treatment modality. He has spearheaded efforts to integrate clinical research as a core pillar at VITAS with recent partnering with NYU and participation in the NIH-funded "The Hospice Advanced Dementia Symptom Management and Quality of Life Trial."

At the national level, Dr. Shega helped spearhead development of quality measures for persons with dementia that incorporate geriatric and palliative principles as a member of the American Academy of Neurology Dementia and Mild Cognitive Impairment measurement group. He has been appointed to the National Academy of Medicine Roundtable on Quality Care for Persons with Serious Illness, representing the American Geriatrics Society.

Dr. Shega is co-managing editor for Essential Practices in Hospice and Palliative Medicine and has more than 50

peer-reviewed publications focusing on the care of persons with serious illness. He works with medical trainees across the state of Florida, including at the University of Central Florida, Veterans Administration, and HCA to submit an ACGME-accredited fellowship in hospice and palliative medicine as well as faculty for the fellowship at Naples Community Hospital.

Kimberly R. Smoak, MSH, ODP

Kimberly Smoak has been with the Agency for Health Care Administration since August 1995. She is the deputy secretary of the Division of Health Quality Assurance, which licenses and/or certifies and regulates 40 different providers, including hospitals, nursing homes, assisted-living facilities, and home health agencies. Ms. Smoak is also the state survey agency director for the State of Florida and holds a Master of Science in Health with the program emphasis in aging studies. She is also a Qualified Intellectual Disability Professional (QIDP). In 2009 and 2017, she received Survey & Certification Achievement Awards, presented by the Centers for Medicare & Medicaid Services for her work in survey and certification.

Niharika N. Suchak, MBBS, MHS, FACP, AGSF

Dr. Niharika Suchak is a clinician-educator and associate professor in the Department of Geriatrics at Florida State University College of Medicine (FSUCOM) in Tallahassee, FL. She was the director of Year 1 Clinical Skills at FSUCOM for several years and is currently the director of interprofessional education, medical director of FSU TeleHealth™, and chair of the FSUCOM Telehealth Committee. In addition, she serves as medical director for Big Bend Hospice that has its head office in Tallahassee and provides a full range of programs and services to patients with advanced illness, and their families, throughout the Big Bend area.

Dr. Suchak is board certified through the American Board of Internal Medicine in internal medicine, geriatric medicine, and hospice and palliative medicine. She has extensive clinical experience in a variety of settings, including office, hospital, nursing home, rehabilitation facility, hospice, assisted living, and house calls. She has organized geriatrics consultation programs with sub-specialties such as oncology, surgery, orthopedics, and gynecology.

She has a strong interest in medical education, and specifically in curriculum development, clinical skills, interprofessional education, telehealth, advance care planning, palliative care, and the use of simulation as a tool for medical education. Her teaching experience includes the training of medical students, medical residents, geriatric medicine fellows, and students of multiple health professions.

Dr. Suchak is a past-president of the Florida Geriatrics Society, co-chair of the American Geriatrics Society Special Interest Group in International Activities, member of the American Board of Internal Medicine Geriatric Medicine Board Exam Committee, and member of the Florida Department of Health Alzheimer's Disease Research Grant Advisory Board.

She has been the recipient of many awards, including multiple listings in Best Doctors in America®. In 2016, she received the Outstanding Senior Faculty Educator Award by the Florida State University College of Medicine. In 2012, she received the Clinician of the Year Award by the American Geriatrics Society. She is a fellow of the American Geriatrics Society and the American College of Physicians. Dr. Suchak has presented regionally, nationally, and internationally on various geriatric medicine, hospice and palliative care, and medical education topics.

Gregory A. Sullivan, MD

Dr. Greg Sullivan is a graduate of the University of Arkansas for Medical Sciences and completed both general psychiatry residency and geriatric psychiatry fellowships at the University of South Florida. He currently serves as chief geriatric psychiatrist providing inpatient consultation-liaison services to the short-term post-acute rehab and long-term care units of the James A. Haley VA Hospital in Tampa and is director of the Electroconvulsive Therapy Program. He is an assistant professor of psychiatry with the University of South Florida, with faculty positions in the general, geriatric, addiction, and forensic training programs, and serves as program director for the geriatric psychiatry fellowship.

Dr. Sullivan's clinical and academic interests include the overlapping specialties of geriatric and consult psychiatry, particularly as these relate to advanced assessments of decision-making capacity, assessment and management of complex delirium, and care of aging LGBT patients. Dr. Sullivan is also a proud advocate for older adults through his work with the Florida Geriatrics Society, where he serves as secretary-treasurer and chair of the Advocacy and Public Policy Committee.

Melanie Trigo, PharmD

Dr. Melanie Trigo has been a long-term care consultant pharmacist for Omnicare for the past 18 years. She received her doctor of pharmacy degree from Nova Southeastern University in 1994 and her certification in geriatric pharmacy from the Commission for Certification in Geriatric Pharmacy in 2008. Dr. Trigo has held positions as a clinical assistant professor of pharmacy practice at Nova Southeastern University and professor at Larkin School of Nursing. Previous to her long-term care practice, Dr. Trigo was clinical specialist and operations supervisor at Miami Heart Institute and director of pharmacy services at Coral Gables Hospital.

Laura Tubbs, RN, MSN, MEd, CDP, COP, LNHA

Laura Tubbs has been an RN for 29 years. She worked her way through nursing school, charge nurse, MDS nurse, DON, vice president of clinical, quality consultant, and administrator, always teaching and training nurse leaders on QAPI, dementia, psychotropic management, infection control, risk management, pain management, medication management, wound management, and survey readiness. In her 30s she taught relaxation techniques as a Hatha yoga instructor in a church basement in a small town in Kansas while working as a nursing instructor at the local community college. In 2013, she trained at the Cooper Institute of Heart Health in Dallas for personal trainers, where she met Dr. Cooper, who spoke about the importance of taking care of you. She is a former AHCA/NCAL Silver Award team lead. Between 2008 and 2013 she worked with Jackie Vance on the review and updating of AMDA's CPGs. She now enjoys teaching psychiatric nursing to our future nurses online at the International College of Health Sciences in Boynton Beach, FL. She has four grown children, one autistic; a rescue dog named Henry; and two grandchildren.

John Whitman, MBA, NFA

John Whitman has been an active force in the field of aging and long-term care for more than 30 years. For the past two decades, he has been a faculty member in the University of Pennsylvania's Wharton MBA Healthcare Program, serving as the program's internal expert on senior care services. He is also a multiple recipient of Wharton's coveted Excellence in Teaching Award. As a national consultant, he has worked with all levels of health care and social service organizations providing care and services for seniors.

Whitman completed a six-year term and co-chair of the Finance Committee on the board of the Philadelphia Corporation for Aging, the third largest Area Agency for Aging in the nation, with an annual budget over \$100 million. He also served on the dean's advisory board of Drexel University's School of Public Health and as an advisory board member of numerous startup companies focused on programs, services, or technologies to improve care for seniors both in America and internationally.

He also started and serves as the executive director of a healthcare-focused nonprofit called The TRECS Institute. TRECS stands for Targeting Revolutionary Elder Care Solutions and serves as a catalyst to create positive changes in caring for seniors while generating added revenue for providers and cost savings for the health care system.

Brianna Wynne, MD

Dr. Brianna Wynne is a clinical assistant professor and the assistant program director of the geriatric fellowship at the University of Florida College of Medicine. She is a fellowship-trained, board-certified geriatrician with a family medicine background. Dr. Wynne completed her medical school and family medicine residency at the Medical College of Wisconsin, followed by geriatric fellowship at AdventHealth in Orlando.

Dr. Wynne sees patients in a variety of settings, including outpatient clinic, skilled nursing facilities, and inpatient with the geriatric consult service. She has been a member of FMDA – The Florida Society for Post-Acute and Long-Term Care Medicine's Education Committee since 2022. She is also active in the American Geriatric Society, where she served as chair of the Fellows-in-Training Committee from 2021 to 2022. Dr. Wynne is passionate about practicing evidence-based medicine and strives to be a life-long learner. In her free time, she enjoys running marathons and exploring the outdoors.

Robert A. Zorowitz, MD, MBA, FACP

Dr. Robert Zorowitz is regional vice president, health services, for the Northeast Region of Humana. Previously, he was senior medical director for the Downstate NY Market for Optum, overseeing its Institutional Special Needs Plan; prior to that he was medical director and attending physician at several nursing facilities in Atlanta and New York City. Over his career, he has also practiced in both the hospital inpatient and office settings.

Dr. Zorowitz is a graduate of Albany Medical College, completed his residency in internal medicine at Long Island Jewish Medical Center, and his geriatric fellowship at The Mount Sinai Hospital, both in New York City. He completed his master of business administration at The Goizueta Business School at Emory University in Atlanta, GA. He is board certified in internal medicine, geriatric medicine and in hospice/palliative care medicine and is certified as a medical director by the American Board of Post-Acute and Long-Term Care.

For the last 15 years, Dr. Zorowitz has been the advisor for the American Geriatrics Society to the AMA CPT Editorial Panel. Most recently, he was a member of the working group that revised the CPT Evaluation and Management code descriptors.



We've Gone Social and So Should You!

Social Media Action Contest: We've gone social! Be sure to "Like" us on Facebook, "Follow" us on Twitter, and "Connect" with us on LinkedIn to stay in the know with all that transpires within FMDA!

Visit any of our social media pages and your likes, follows, comments, photos, and videos will enter you for a chance to win a \$25 gift card on Friday, Saturday, and Sunday during the annual conference.



Call for Presentations

The Education Committee for Best Care Practices in the PALTC invites you to submit speaker presentation proposals and abstracts for the 2023 annual conference.

Submission Site Opens: **Nov. 30, 2022**

Speaker Presentation Submission Deadline:

Feb. 17, 2023

See page 41 for additional information or contact the FMDA business office at (561) 689-6321.



To access the complimentary
Wireless Internet in the
Conference Center's Meeting Rooms:

The username is **loews_conf**
and the PIN code will be **FMDA22**.

Visit the Silent Auction Live in the Exhibit Hall – Bid Online!

FMDA's fundraising goals include supporting initiatives and infrastructure related to its Quality Advocacy Coalition, future pilot and research projects, training programs, Florida POLST, and technology to improve membership services and satisfaction.

All proceeds from the auction will benefit these efforts.

Silent Auction bidding now online!

Bid Now, Bid Often!

Enjoy an all-new online experience with the **FMDA Silent Auction!**

We have taken the experience online so everyone can join in the fun. It's easy!

Step 1

Visit the official auction website **HERE!**

Or

Text: **BidToWin** To: **56651**

Or

Scan this QR code:



Step 2

Register your mobile phone number, email, and name.

Step 3

Bidding closes at **12:30 p.m. EST - Saturday, Nov. 5.**

FMDA—THE FLORIDA SOCIETY FOR POST-ACUTE AND LONG-TERM CARE MEDICINE, INC., IS A 501(C)(3) CHARITY. ITS EIN NO. IS 81-3438184. A COPY OF THE OFFICIAL REGISTRATION AND FINANCIAL INFORMATION MAY BE OBTAINED FROM THE FLORIDA DIVISION OF CONSUMER SERVICES BY CALLING TOLL-FREE (800-435-7352) WITHIN THE STATE. REGISTRATION DOES NOT IMPLY ENDORSEMENT, APPROVAL, OR RECOMMENDATION BY THE STATE. REGISTRATION NO. CH57912.

Thank You!

We wish to thank Viatris Respiratory for hosting
this non-CME/CPE/CE/CEU session

Saturday, Nov. 5 • 12:50-1:50 p.m.

PRODUCT THEATER LUNCH

*The Role of Nebulized Long-Acting Maintenance Treatment
in the Long-Term Care Setting*

— Sponsored by  **VIATRIS**



Thank You!

We wish to thank the following organizations for their support:

31st Annual Diamond Sponsor

VITAS
Healthcare
SINCE 1980

Silver Grande Sponsor

 **NEUROCRINE**
BIOSCIENCES

Product Theater Host

 **VIATRIS**

.....

Bronze Grande Sponsors

CompMed
Medical Billing



GuideStar Eldercare
Embracing Our Past. Building The Future.

Optum

 **SUNOVION**

teva

UROVANT
SCIENCES

.....

Friday Breakfast –  **THE ROSE
PROGRAM**

President's Wine & Cheese Reception – **Optum**

2022 Quality Champion Award – **Optum**



2022 Conference Program

1

Schedule of Events

Thursday, Nov. 3, 2022

THURSDAY, NOV. 3

OPTIONAL PRE-CONFERENCE WORKSHOPS

8 a.m.-6:45 p.m.

Ligurian I

Registration & Information

Persistent Impact of Long COVID

8:45-9:30 a.m.

Ligurian II-III

101 Long COVID: State of the State

(0.75 hour)

- Diane Sanders-Cepeda, DO, CMD; Senior Medical Director, UnitedHealthcare; President, FMDA, and Chair, FMDA's Journal Club



Diane Sanders-Cepeda

Moderator:

Kenya Rivas, MD, FAFP, CMD; Vice Chair, Education Committee; Program Director

9:35-10:20 a.m.

Ligurian II-III

102 Healing Challenges Associated with COVID-19 Skin and Long-Haulers

(0.75 hour)

- Pamela Scarborough, PT, DPT, MS, CWS, CEEAA; Vice President of Clinical Affairs, American Medical Technologies



Pamela Scarborough

Moderator: Michelle A. Lewis, DNP, MSN, ARNP, FNP-BC, GNP-BC; Chair, Education Committee/Nurse Educator; Director, FMDA



Wireless access
in the Conference Center
meeting rooms:
UN= loews_conf
PIN code: FMDA22

10:25-11:55 a.m.

Ligurian II-III

103 Boots on the Ground: A Panel Discussion

(1.5 hours)

- Swati Gaur, MD, MBA, CMD; Medical Director, New Horizons Nursing Facilities, Northeast Georgia Health System; CEO, Care Advances Through Technology
- Carmelle A. Casimir, DNP, FNP-BC; Senior Clinical Services Manager, Optum Nurse Practitioner Care Delivery & Management
- Ginny Hoar, PharmD, BCGP; Manager, Consultant Pharmacists (AR, AL, MS, LA, GA), Omnicare, a CVS Health Company

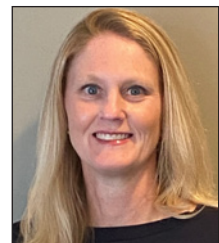


Swati Gaur



Carmelle A. Casimir

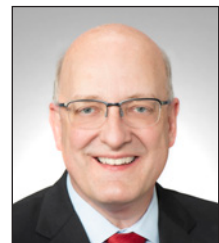
- David A. Nace, MD, MPH, CMD; Associate Professor and Clinical Chief of Geriatric Medicine, University of Pittsburgh; Chief of Medical Affairs, UPMC Senior Communities; Past-President, AMDA – The Society for Post-Acute and Long-Term Care Medicine



Ginny Hoar

Moderators: Diane Sanders-Cepeda, DO, CMD; Senior Medical Director, UnitedHealthcare; President, FMDA, and Chair, FMDA's Journal Club

Pamela Scarborough, PT, DPT, MS, CWS, CEEAA; Vice President of Clinical Affairs, American Medical Technologies



David A. Nace

11:55 a.m.-12:50 p.m.

Lunch on Your Own

Self-Parking for Locals at Portofino Bay Hotel:

Discounted self-parking is \$15 per vehicle per day (plus sales tax) for all FMDA conference participants. If you are not staying at the hotel, the lot is an unattended ticketed lot. You will need to ask for a parking discount validation ticket on each day from FMDA's conference registration desk.

Schedule of Events

2

Thursday, Nov. 3, 2022

12:50-2:50 p.m.

Ligurian II-III

104 EKG Abnormalities in PALTC in the COVID Era

(2 hours)

► Elizabeth Hidlebaugh, MD;
Board-Certified Internist and Geriatrician, AMDG Naples 100 Senior Concierge and Consulting, Naples, FL; Assistant Professor, Immokalee Training Site, Department of Geriatrics, Florida State University College of Medicine

► Bernardo J. Reyes, MD, CMD, AGSF; *Assistant Professor of Geriatric Medicine, Charles E. Schmidt College of Medicine, Florida Atlantic University; Associate Program Director, Internal Medicine Residency*

Moderator: Kenya Rivas, MD, FAFP, CMD; Vice Chair, Education Committee; Program Director



Elizabeth Hidlebaugh



Bernardo J. Reyes

3-4 p.m.

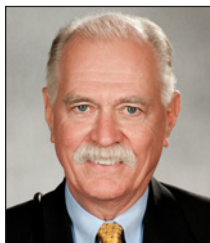
Ligurian II-III

105 Prognostication: Including Attributes and Predictors of Long COVID

(1 hour)

► Leonard R. Hock Jr., DO, MACOI, CMD; *Palliative Physician; Past-President, FMDA*

Moderator: Rick Foley, PharmD, CPh, BCGP, FASCP; Member, Education Committee; Consultant Pharmacists Liaison



Leonard R. Hock Jr.

Daylight Saving Time Ends on Sunday, November 6, 2022

At 2 a.m., Sunday, November 6, 2022, clocks are turned backward 1 hour. This gives everyone an extra hour of sleep!

START OF CONFERENCE

4:10-5:10 p.m.

Ligurian II-III

106 The Importance of Deprescribing for Older Adults

(1 hour)

► Ginny Hoar, PharmD, BCGP; *Manager, Consultant Pharmacists (AR, AL, MS, LA, GA), Omnicare, a CVS Health Company*

► Wilfredo C. Aqui Jr., PharmD, MT; *Florida Clinical Manager (District 8), Omnicare, a CVS Health Company*

Moderator: Simone Minto-Pennant, PharmD; Member, Education Committee; Director, FMDA



Ginny Hoar



Wilfredo C. Aqui Jr.

CONCURRENT SESSIONS A

5:20-6:20 p.m.

Venetian I

107 Mindfulness: Taking Care of You While You Take Care of Others

(1 hour)

► Laura Tubbs, RN, MSN, MSEd, CDP, CQP, LNHA; *Assistant Professor, International College of Health Sciences*

Moderator: Leonard Hock Jr., DO, MACOI, CMD; Member, Education Committee; Director, FMDA



Laura Tubbs

5:20-6:20 p.m.

Venetian II

108 Update on Telemedicine Research

(1 hour)

► John Whitman, MBA, NFA; *Faculty, University of Pennsylvania Wharton Healthcare Management; Executive Director, The TRECS Institute*

Moderator: Elizabeth Hidlebaugh, MD; Member, Education Committee



John Whitman

3

Schedule of Events

Thursday, Nov. 3, and Friday, Nov. 4, 2022

CONCURRENT SESSIONS B

6:30-7:30 p.m.

Venetian I

109 Coping with Healthcare Worker Burnout (1 hour)

► Christine Cauffield, PsyD; Geriatric Neuropsychologist; CEO, LSF Health Systems

Moderator: Bernardo Reyes, MD, CMD, AGSF; Member, Education Committee; Director, FMDA



Christine Cauffield

6:30-7:30 p.m.

Venetian II

110 Specialized Co-Management Care for People Living with Dementia (1 hour)

► Michelle Moccia, DNP, ANP-BC, GS-C; Program Director Senior ER, St. Mary Mercy Hospital, Livonia, MI; Past-President, Gerontological Advanced Practice Nurses Association

► Michelle Panlilio, DNP, GNP-BC; Dementia Care Specialist, Nurse Practitioner, UCLA Alzheimer's and Dementia Care Program

Moderator: Laurie Sheffield, ARNP, DNS; Member, Education Committee; Director, FMDA



Michelle Moccia



Michelle Panlilio

FRIDAY, NOV. 4

7:15 a.m.-6 p.m.

Ligurian I

Registration & Information

7:30-8:30 a.m.

Venetian Foyer

Continental Breakfast
Thanks to The Rose Program

7:45-8:30 a.m.

Ligurian II



THE FLORIDA SOCIETY
FOR POST-ACUTE AND
LONG-TERM
CARE MEDICINE

Annual Membership Meeting

8:35-8:45 a.m.

Venetian III-V

President's Welcome

Diane Sanders-Cepeda, DO, CMD

8:45-9:45 a.m.

Venetian III-IV

111 Keynote Address: Florida State of Medicine: How we got here, where we are, and how to improve (1 hour)

► Joshua D. Lenchus, DO, RPh, FACP, SFHM; President, Florida Medical Association; Past-President, Florida Osteopathic Medical Association; Senior Vice President and Chief Medical Officer, Broward Health

Moderator: Diane Sanders-Cepeda, DO, CMD; Member, Education Committee; President, FMDA



Joshua D. Lenchus

9:50-10:50 a.m.

Venetian III-V

112 Managing Delirium in PALTC (1 hour)

► Gregory A. Sullivan, MD; Geriatric Psychiatrist, Consultation-Liaison Service, James A. Haley Veterans Hospital; Assistant Professor of Psychiatry, University of South Florida Morsani College of Medicine; Program Director, Geriatric Psychiatry Fellowship, University of South Florida Morsani College of Medicine

Moderator: Shark Bird, MD, CMD, CWSP; Member, Education Committee; Vice President, FMDA



Gregory A. Sullivan



Wireless access
in the Conference Center
meeting rooms:
UN= loews_conf
PIN code: FMDA22

Schedule of Events

4

Friday, Nov. 4, 2022

10:55-11:55 a.m.

Venetian III-V

113 Moving from Pandemic to Endemic (1 hour)

► David A. Nace, MD, MPH, CMD; Associate Professor and Clinical Chief of Geriatric Medicine, University of Pittsburgh; Chief of Medical Affairs, UPMC Senior Communities; Past-President, AMDA – The Society for Post-Acute and Long-Term Care Medicine

► Kimberly R. Smoak, MSH, QIDP; Deputy Secretary, Division of Health Quality Assurance, Florida's Agency for Health Care Administration

► Elizabeth Borer, RN; Chief Nursing Officer in Long-Term Care

Moderator: Diane Sanders-Cepeda, DO, CMD; Member, Education Committee; President, FMDA



David A. Nace



Kimberly R. Smoak



Elizabeth Borer

12-1 p.m.

Tuscan III-IV

LUNCH WITH THE EXHIBITORS Thanks to Neurocrine

1-2 p.m.

Venetian III-V

114 AMDA Public Policy Update (1 hour)

► Alex Bardakh, MPP, PLC, CAE; Director, Public Policy & Advocacy, AMDA – The Society for Post-Acute and Long-Term Care Medicine

Moderator: Kimberly Jackson, PharmD, CPh; Member, Education Committee



Alex Bardakh

2:05-3:15 p.m.

Tuscan III-IV

GRAND OPENING OF TRADE SHOW, POSTER PRESENTATIONS, AND SILENT AUCTION

3:15-4:15 p.m.

Venetian III-V

115 Recognizing Burnout in Those Caring for Patients with Dementia (1 hour)

► Gregory James, DO, MPH, CMD; Senior Medical Director for the North Region of the U.S. and the Florida Market with Optum

► Nicholas James, PhD; Staff Psychologist, Department of Veterans Affairs, Orlando Healthcare System

Moderator: Robert Kaplan, MD, FACP, CMD; Member, Education Committee; AMDA Liaison



Gregory James



Nicholas James

4:20-5:20 p.m.

Venetian III-V

116 Improving PALTC (1 hour)

► Suzanne Gillespie, MD, CMD, RD, FACP; Associate Professor of Medicine, Division of Geriatrics/Aging, and Associate Professor of Emergency Medicine, University of Rochester School of Medicine and Dentistry; Associate Chief of Staff, Geriatrics Extended Care & Rehabilitation; President, AMDA – The Society for PALTC Medicine

Moderator: Rhonda L. Randall, DO; Member, Education Committee; Chair, FMDA



Suzanne Gillespie

5:25-6:55 p.m.

Tuscan III-IV

Exhibit Hall Welcome Reception
Thanks to **VITAS Healthcare:**
31st Annual Diamond Sponsor

5

Schedule of Events

Saturday, Nov. 5, 2022

SATURDAY, NOV. 5

6:30 a.m.-5:45 p.m.

Ligurian I

Registration & Information

7-8 a.m.

Venetian III-V

**117 Red-Eye Rounds:
PALTC and Geriatrics
Clinical Quandaries**
(1 hour)

- Michelle A. Lewis, DNP, MSN, ARNP, FNP-BC, GNP-BC; *Optum Nurse Practitioner; Chair, Education Committee/ Nurse Educator; Director, FMDA; President, Florida GAPNA*
- Paul Katz, MD, CMD; *Professor and Chair, Department of Geriatrics, Florida State University College of Medicine; Past-President, AMDA – The Society for Post-Acute and Long-Term Care Medicine*
- Simone Minto-Pennant, PharmD, BCPS, CPh; *Pharmacy Consultant for Alwyn C. Cashe State Veterans' Nursing Home*
- Naushira Pandya, MD, CMD, FACP; *Professor and Chair, Department of Geriatrics, Kiran C. Patel College of Osteopathic Medicine, Nova Southeastern University; Project Director, NSU's South Florida Workforce Enhancement Program; Past-President, AMDA – The Society for Post-Acute and Long-Term Care Medicine*

Moderator: Elizabeth Hames, DO, CMD;
Member, Education Committee;
Secretary-Treasurer, FMDA



Michelle Lewis



Paul Katz



Simone Minto-Pennant



Naushira Pandya

8-9 a.m.

Tuscan III-IV

Continental Breakfast in Exhibit Hall with Trade Show,
Poster Presentations, and Silent Auction
Sponsored by VITAS Healthcare:
31st Annual Diamond Sponsor

9:05-10:35 a.m.

Venetian III-V



Suzanne Gillespie



Jennifer L. Kim



Robin Arnicar

118 National Leaders Forum
(1.5 hours)

- AMDA President Dr. Suzanne Gillespie, MD, CMD, RD, FACP; *Associate Professor of Medicine, Division of Geriatrics/Aging, and Associate Professor of Emergency Medicine, University of Rochester School of Medicine and Dentistry; Associate Chief of Staff, Geriatrics Extended Care & Rehabilitation*
- GAPNA President Jennifer L. Kim, DNP, GNP-BC, GS-C, FNAP, FAANP; *Professor of Nursing, Vanderbilt School of Nursing*
- NADONA President Robin Arnicar, RN, FACDONA, IP-BC; *Director of Infection Prevention, Erickson Senior Living*

Moderator: Diane Sanders-Cepeda, DO, CMD;
Member, Education Committee; President, FMDA

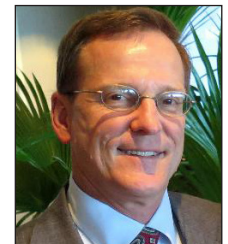
10:45-11:45 a.m.

Venetian III-V

**119 Best Practices for Pain Management
in PALTC**
(1 hour)

- F. Michael Gloth III, MD, FACP, AGSF, CMD; *Clinical Professor of Geriatrics, Florida State University College of Medicine; Associate Professor of Medicine, Division of Geriatric Medicine and Gerontology, Johns Hopkins University School of Medicine; President and CEO, AMDG Naples 100 Senior Concierge and Consulting*

Moderator: Samantha Quigley, PharmD, CPh;
Member, Education Committee



F. Michael Gloth III

Schedule of Events

6

Saturday, Nov. 5, 2022

11:45 a.m.-12:50 p.m.

Tuscan III-IV

Break in Exhibit Hall with Trade Show, Poster Presentations, and Silent Auction

12:50-1:50 p.m.

Tuscan I-II

PRODUCT THEATER LUNCH* (NON-CME/CPE/CE)

The Role of Nebulized Long-Acting Maintenance Treatment in the Long-Term Care Setting

Speaker: Manuel A. Suarez-Barcelo, MD, CMD;
Krystal Bay Nursing Home, North Miami Beach,
Florida Consultant Medical Director

– Sponsored by *Viatris Respiratory*

1:50-2:50 p.m.

Venetian III-V

» **120** Get Smart About Diabetes in the Geriatric Population
(1 hour)

► David A. LeVine, MD, CMD;
Medical Director and Chief Medical Officer, Menorah Manor,
St. Petersburg, FL



David A. LeVine

Moderator: F. Michael Gloth, MD, FACP, AGSF, CMD;
Member, Education Committee; Director, FMDA

2:55-3:55 p.m.

Venetian III-V

» **121** AHCA Regulatory Update
(1 hour)

► Kimberly Smoak, MSH,
QIDP; Deputy Secretary, Division of Health Quality Assurance, Florida's Agency for Health Care Administration



Kimberly Smoak

Moderator: Maria R. Gonzalez, MD, FAAFP, CMD;
Member, Education Committee

* **Product Theaters:** CE/CME credit is not provided for these programs.

CONCURRENT SESSIONS C

4-5 p.m.

Tuscan I

» **122** Medicare Billing & Coding Update
(1 hour)

► Robert A. Zorowitz, MD,
MBA, FACP; Regional Vice President, Health Affairs,
Northeast, Humana



Robert A. Zorowitz

Moderator: Alfonso Gonzalez-Rodriguez, MD;
Member, Education Committee; Director, FMDA

4-5 p.m.

Tuscan II

» **123** Medical Care of LGBTQ+ Older Adults in PALTC
(1 hour)

► Jonathan Seth Appelbaum, MD; Chair and Professor,
Department of Clinical Sciences,
Florida State University College of Medicine; Active Staff, Medicine,
Tallahassee Memorial Healthcare;
Medical Director, Care Point Health and Wellness



Jonathan Appelbaum

Moderator: Niharika Suchak, MBBS, MHS, FACP, AGSF;
Member, Education Committee

5:05-6:05 p.m.

Venetian III-V

» **124** Keynote Address: State of the Hospice Benefit 2022
(1 hour)

► Joseph Shega, MD;
Executive Vice President and Chief Medical Officer, VITAS; Associate Professor of Medicine, University of Central Florida; Co-Managing Editor, Essential Practices in Hospice and Palliative Medicine



Joseph Shega

Moderator: Rhonda L. Randall, DO; Member, Education Committee; Chair, FMDA

7

Schedule of Events

Saturday, Nov. 5, and Sunday, Nov. 6, 2022

6:10-7:40 p.m.

Citrus Piazza

President's Wine & Cheese Reception

– Sponsored by Optum

Quality Champion Award: Sponsored by Optum

SUNDAY, NOV. 6

6:45-7:45 a.m.

Tuscan I

Conference Planning Committee Review & Wrap-up Breakfast Meeting

Open to all members interested in learning more about how we plan, implement, and evaluate our annual conference.

Breakfast will be served.

7:15 a.m.-12:45 p.m.

Ligurian I

Registration & Information

7:30-8:30 a.m.

Venetian III-V

Light Continental Breakfast

7:45-9:05 a.m.

Venetian III-V

125 Geriatric Literature Review

(1.5 hours)

◀ Niharika Suchak, MBBS,
MHS, FACP, AGSF;

Clinician-Educator and Associate
Professor, Department of Geriatrics,
Florida State University College of
Medicine; Director of Year 1 Clinical
Skills, FSUCOM; Medical Director, FSU Telehealth;
Chair, FSUCOM Telehealth Committee

Moderator: Kenya Rivas, MD, FAAFP, CMD;
Vice Chair, Education Committee; Program Director



Niharika Suchak

9:15-10:10 a.m.

Venetian III-V

126 A Case-Based Approach to Optimal Pharmacotherapy

(1.0 hour)

► Meenakshi Patel, MD,
FACP, MMM, CMD; Principal
Investigator, Valley Medical
Research; Faculty for AMDA Core
Curriculum; Clinical Associate
Professor, Wright State University,
Dayton, OH

► Naushira Pandya, MD,
CMD, FACP; Professor and Chair,
Department of Geriatrics, Kiran
C. Patel College of Osteopathic
Medicine, Nova Southeastern
University; Project Director, NSU's
South Florida Workforce Enhancement Program; Past-
President, AMDA – The Society for Post-Acute and
Long-Term Care Medicine

Moderator: Brianna Wynne, MD;
Member, Education Committee



Meenakshi Patel

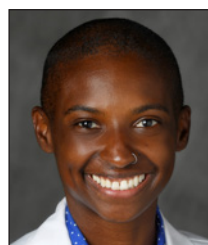


Naushira Pandya

10:15-11:35 a.m.

Venetian III-V

127 Breaking Free from Osteoporosis



Brianna Wynne



Melanie Trigo



Justin C. Hess

(1.5 hours)

- Brianna Wynne, MD; Assistant Professor of
Geriatric Medicine, University of Florida
- Melanie Trigo, PharmD; Consultant Pharmacist,
Omnicare of South Florida, a CVS Company
- Justin C. Hess, PT, DPT, OCS; Orthopedic Research
Manager, AdventHealth Sports Medicine and Rehab

Moderator: Brian Kiedrowski, MD, MBA, CMD, CPE;
Member, Education Committee; Director, FMDA

Schedule of Events

8

Sunday, Nov. 6, 2022

11:40 a.m.-12:35 p.m.

Venetian III-V

128 Effective Usage of Psychiatric Medications in Nursing Facilities (1.0 hour)

► Pari Deshmukh, MD; *Medical Director, Balanced Wellbeing; Triple Board-Certified Psychiatrist*

Moderator: Jennifer Moses-Powell, CRNP; Member, Education Committee



Pari Deshmukh

12:45 a.m.

END OF CONFERENCE

Announcements, Door Prizes, etc.

– Please note that the speakers and topics for this meeting are subject to change without notice.

Attention all attendees seeking continuing education credits - regardless of your profession - here are the Credit Claim Instructions

To claim credit:
Scan QR Code Below
OR
Visit

<https://apex.paltc.org/course/view.php?id=1470>



- Login with your AMDA Credentials
If you don't have an AMDA Account, create a free account.
- Complete Evaluation & Credit Claim.
- You must complete the online evaluation process before you download the Certificate of Attendance.
- Credit will automatically appear on your AMDA Transcript.

Faculty Disclosures

Financial Relationship Disclosures

Speakers are required to provide verbal disclosure prior to each talk. If the learner perceives any bias toward a commercial product or service, please report this to the Society's staff. According to the Society and ACCME policy, all those in a position to control content are required to disclose any relevant financial relationships.

The planners have no relevant financial relationships (see page 10).

The following speakers have relevant financial relationships which were mitigated where needed:

Jonathan S. Appelbaum, MD, FACP, AAHIVS	Advisory Board
	Viiv Healthcare, Merck, Theratechnologies
Pari Deshmukh, MD	Speakers Bureau
	Neurocrine, Acadia, Teva, Avanir
Gregory James, DO, MPH, CMD	Full-time/Part-time Employee
	United Health Group
F. Michael Gloth, MD, FACP, AGSF, CMD	Full-time/Part-time Employee
	AMDG Naples 100 Sr. Concierge/Consulting
	Royalties
	Springer Publishing
Ginny Hoar, Pharm D	Full-time/Part-time Employee
	CVS/Omnicare
Naushira Pandya, MD, CMD, FACP	Speakers Bureau and Honoraria
	Lilly
Michelle Panlilio, DNP, GNP-BC	Advisory Board
	Biogen and Eisai Pharmaceutical Company
Meenaskshi Patel, MD	Speakers Bureau
	Teva, Lilly, Urovant, Janssen, Bayer
	Grant/Research Support
	Lilly, Janssen, NovoNordisk, TauRx, GSK, Neurim
Bernard Reyes, MD	Grant/Research Support
	Point Click Care
Diane Sanders-Cepeda, DO, CMD	Full-time/Part-time Employee
	UHG/UHC Retiree Solutions
Pamela Scarborough, PT, DPT, MS, CWS, CEEAA	Full-time/Part-time Employee
	RHX/AMT-Part B Biller of dressings
Joseph Shega, MD	Full-time/Part-time Employee
	VITAS Health Care
Melanie Trigo, PharmD	Full-time/Part-time Employee
	CVS/Omnicare

Self-Parking for Locals at Portofino Bay Hotel:

Discounted self-parking is \$15 per vehicle per day (plus sales tax) for all FMDA conference participants. If you are not staying at the hotel, the lot is an unattended ticketed lot. You will need to ask for a parking discount validation ticket on each day from FMDA's conference registration desk.

2022 Annual Trade Show

Exhibitors

Acadia Pharmaceuticals
 Balanced Wellbeing LLC
 Bridge Diagnostics
 ChenMed
 CompMed
 DS Global
 Florida Geriatrics Society
 Gerontological Advanced Practice Nurses Association
 GuideStar Eldercare
 Huntingdon Behavioral Health
 Lilly USA
 National Association of Directors of Nursing Administration
 Netsmart
 Neurocrine
 Optum
 Portable Medical Diagnostics
 Provider Partners
 SK Life Science
 Spectrum Medical Partners/CFIM
 Sunovion Pharmaceuticals
 TEVA
 Thrive Behavioral Sciences
 Urovant Sciences, Inc.
 Viatris Respiratory
 VITAS Healthcare
 Vohra Wound Physicians

***Show your support by visiting these exhibitors,
and be eligible to win great door prizes!***

2022 Annual Trade Show Exhibitors (A)



Acadia Pharmaceuticals

Heather Highfield
Executive LTC Rep.
4650 Links Village Dr., A104
Ponce Inlet, FL 32127
(407) 399-0361
heather.highfield@acadia-pharm.com

Acadia is trailblazing breakthroughs in neuroscience to elevate life. We are at the forefront of healthcare, fighting for breakthroughs in our science, our therapies, and the way we work, but also in the lives of the people we serve. At Acadia, we are committed to our purpose: We fight disease, so more you shines through.



Balanced Wellbeing LLC

Kathleen Miller
Director of Strategic Growth & Business Development
3200 SW 34th St., Ste. 701
Ocala, FL 34474
(407) 619-9870
Fax: (888) 248-4348
kathleenmiller@balancedwellbeingllc.com

Balanced Wellbeing specializes in improving the life quality of nursing and assisted-living residents. We assist in capturing depression and cognitive impairment (criteria of PDPM revenue), ensuring optimal facility psychiatric regulatory compliance. We provide "Layers of Service" to offer psychiatric and psychotherapy services throughout the continuum of care, including outpatient followup in our clinics.



Bridge Diagnostics

John Stooksbury
Regional Sales Manager, Southeast
111 Theory, Ste. 100
Irvine, CA 92617
(865) 679-2047
john.stooksbury@bridgediagnostics.com

Bridge Diagnostics is a national healthcare services company providing clinical diagnostic information, clinic workflow solutions, population health management tools, and precision medicine data as part of a holistic value-based care delivery model. Our mission is to Bridge the gap between diagnostics and therapeutics to improve patient outcomes.



ChenMed

Philip Bathurst
Lead, Candidate Experience Manager
1395 NW 167th St.
Miami, FL 33169
(504) 470-8352
philip.bathurst@chenmed.com

Our value-based, physician-led primary care honors seniors with affordable, VIP healthcare that delivers better health. We're transforming healthcare for the most vulnerable population: low-income seniors with complex chronic diseases. Our physician-led culture, customized technology, and innovative philosophies drive quality and cost outcomes creating value for patients and physicians.



CompMed

Heath Kupecky
Director of Services
300 Dave Cowens Dr., Ste. 600
Newport, KY 41071
(859) 291-4800 ext. 1196
hkupecky@comp-med.com

For over 30 years, CompMed has been a national leader in Revenue Cycle Management. With our U.S.-based operations, we have worked diligently on maintaining our core values: Transparency, Responsiveness, and Improving your cash flow. Our services include medical billing, credentialing, denial management, and much more!

DS Global

Lee Bender
Event Coordinator
385 N. Magnolia Ave.
Orlando, FL 32801
(773) 595-9194
benderlee30@gmail.com

DS Global offers state-of-the-art medical devices, consultations, and therapies.



Florida Geriatrics Society

Peggy Crowley
Executive Director
P.O. Box 1403
Land O' Lakes, FL 34639
(813) 996-0322
exec@floridageriatricsociety.org

Continued on the next page →

2022 Annual Trade Show Exhibitors (B)

The Florida Geriatrics Society is a statewide membership-based nonprofit 501(c)3 organization founded in October 1989. We are the recognized Geriatrics Society and State Affiliate of the American Geriatrics Society (AGS) and the Florida Medical Society (FMA). The FGS is dedicated to supporting physicians, nurses, and other allied healthcare professionals in improving the quality of life and advancing the health care of older adults through education, advocacy, research, networking, and improving public awareness of professionals involved with caring for older adults. www.floridageriatricsociety.org



Gerontological Advanced Practice Nurses Association (GAPNA)

Erin Macartney
Association Services Manager
E. Holly Ave., Box 56
Pitman, NJ 08071
(856) 256-2332
erin.macartney@ajj.com

The Gerontological Advanced Practice Nurses Association (GAPNA) is the premier professional organization that represents the interests of advanced practice nurses, other clinicians, educators, and researchers involved in the practice or advancement of caring for older adults. GAPNA provides opportunities for education, leadership, research, advocacy, and the advancement of evidence-based care.



GuideStar Eldercare

Ed Shebel
Chief Marketing Officer and EVP of Business Development
2100 N. Main St., Ste. 304
Crown Point, IN 46307
(888) 837-5440
Fax: (574) 546-1999
ed.shebel@guidestareldercare.com

GuideStar Eldercare is the national leader in neuro-behavioral care for elderly and adults in long-term care facilities. We utilize a medical and neurological model and person-centered psych and behavioral care via comprehensive on-site coverage, including the GuideStar Eldercare Long-Term Care Antipsychotic Stewardship to assist facilities in controlling and reducing unnecessary pharmacology.



Huntingdon Behavioral Health

Stephanie Witt
Clinical Operations Director
43 Barkley Cir., Ste. 103
Fort Myers, FL 33907
(239) 936-5250
Fax: (239) 936-9970
switt@mcr.health

Psychiatry and psychology services provided in Florida for the past 30 years. Over 90 psychologists, psychiatrists, APRNs, LCSWs, and pharmacist consultants serve in 220+ skilled nursing, memory care, and ALFs to care for those in need of diagnosis and treatment, achieving optimal levels of independence and functioning.



Lilly USA

Lourdes Postlethwaite
Executive Territory Manager
14809 Ninebark Ct.
Land O' Lakes, FL 34638
(813) 361-0337
postlethwaite_lourdes_c@lilly.com

Lilly unites caring with discovery to create medicines that make life better for people around the world.



National Association of Directors of Nursing Administration (NADONA)

Cheryl Hecker
Marketing Coordinator
1329 E. Kemper Rd., Ste. 4100A
Springdale, OH 45246
(513) 791-3679
Fax: (513) 791-3699
info@nadona.org

Since 1986, the National Association of Directors of Nursing Administration (NADONA) has been THE leading advocate and educational organization for Nurse Leaders in the post-acute care continuum. NADONA was founded by a group of dedicated post-acute care professionals. Over three decades later, our board of directors still consists of post-acute care professionals. Today, thousands of nurse professionals strong, we remain committed to understanding the daily challenges of Nurse Leaders and providing the resources needed for professional success.

2022 Annual Trade Show Exhibitors (c)



Netsmart

Brian Palermo
Client Development Representative
11100 Nall Ave.
Overland Park, KS 66211
bpalermo1@ntst.com

Netsmart, a leading provider of Software-as-a-Service technology and services solutions, designs, builds, and delivers EHRs, HIEs, analytics, and telehealth solutions and services that are powerful, intuitive, and easy- to use. We make the complex simple and personalized so our clients can provide services and treatment that support whole-person care. Visit www.ntst.com.



Neurocrine

Susan Heard, BSN, RN
Long Term Care Account Specialist, Southeast LTC
12780 EL Camino Real
San Diego, CA 92130
(813) 245-6495
sheard@neurocrine.com

Neurocrine Biosciences is a neuroscience-focused, biopharmaceutical company dedicated to discovering, developing, and commercializing life-changing treatments for people with serious, challenging, and under-addressed disorders. The company's diverse portfolio includes four FDA-approved treatments as well as clinical programs in multiple therapeutic areas. Headquartered in San Diego, Neurocrine Biosciences specializes in targeting and interrupting disease-causing mechanisms. For more information, visit neurocrine.com, and follow the company on LinkedIn.



Optum

Tyler Grisham
Vice President, Florida
601 Brooker Creek Blvd.
Oldsmar, FL 34677
(404) 290-7424
tyler.g.grisham@optum.com

Optum is an innovator in on-site clinical care. We partner with health plans to provide specialized benefits and clinical support to the most expensive, medically complex members residing in long-term care communities. One of our core principles is to provide the right care in the right place, helping to improve the patient experience while reducing overall costs.



Portable Medical Diagnostics

Aida de Salamanca
Account Executive
3540 Forest Hill Blvd., Ste. 112
West Palm Beach, FL 33406
(888) 387-9729
Fax: (888) 493-1890
aida@pmdxu.com

Portable Medical Diagnostics has been providing imaging services in Florida for over three decades. We service skilled-nursing facilities, assisted-living facilities, hospitals, and anywhere else a portable X-ray or Ultrasound is needed. Our mission is to provide mobile imaging services with a focus on quality, speed, and customer service.



Provider Partners

Christine Galloway
VP of Provider Network and Business Development
785 Elkridge Landing Rd., Ste. 300
Linthicum Heights, MD 21090
(602) 570-4094
cgalloway@pphealthplan.com

Provider Partners offers tech-enabled, value-based care in long-term care and senior living. Provider Partners Health Plans programs include an Institutional special Needs Plan (I-SNP for skilled-nursing facilities' long-term care residents and an Institutional Equivalent Special Needs Plan (IE-SNP for those living in assisted-living facilities).

Provider Partners is also pleased to add ACO REACH as an additional product to the existing value-based care platform. ACO REACH offers primary care physicians the opportunity to increase their revenue by improving quality and reducing unnecessary hospital utilization.

Continued on the next page →

2022 Annual Trade Show Exhibitors (D)



SK Life Science

Nicole Newcombe
Key Account Manager
461 From Rd.
Paramus, NJ 7652
(617) 851-9695
nnewcombe@sklsi.com

SK Life Science is a subsidiary of SK Biopharmaceuticals, focused on developing innovative, next-generation drugs. We have 28 years of experience in R&D and are dedicated to changing the status quo in CNS. We currently have eight compounds in the clinical development pipeline.



SPECTRUM — MEDICAL PARTNERS —

Spectrum Medical Partners/CFIM

Yolanda Covey
Director of Business Innovations
525 Technology Park, Ste. 109
Lake Mary, FL 32746
(407) 647-2346
Fax: (407) 647-5431
ycovey@spectrummedpartners.com

Hospital medicine, skilled nursing, and transitional care services



Sunovion Pharmaceuticals

Michele Dyer
Regional Account Director LTC, Market Access
575 Shady Hollow Blvd. W
Naples, FL 34120
(484) 645-7474
michele.dyer@sunovion.com

Sunovion is a global biopharmaceutical company focused on the innovative application of science and medicine to help people with serious medical conditions. With patients at the center of everything it does, Sunovion has an unwavering commitment to support people with psychiatric and neurological conditions. Visit us at www.sunovion.com.



TEVA

Richard Barrineau
Manager, Long-Term Care
400 Interpace Pkwy., #3
Parsippany, NY 07054
(864) 351-8861
richard.barrineau@tevapharm.com

Teva Pharmaceutical Industries Ltd. is a leading global pharmaceutical company that delivers high-quality, patient-centric healthcare solutions used by millions of patients every day. Along with our established presence in generics, we have significant innovative research and operations supporting our growing portfolio of specialty and biopharmaceutical products.



Thrive Behavioral Sciences

Stephen Lomonico
President and CEO
5510 N. Hesperdes Rd.
Tampa, FL 33614
(727) 418-2567
Fax: (813) 467-6099
lomonico@thrivebehavioralsciences.com

Thrive Behavioral Sciences provides psychiatry and psychology services to nursing homes and assisted-living facilities.



Urovant Sciences, Inc.

Greg Anderson
Regional Sales Manager
4610 SE 8th St.
Ocala, FL 34471
(352) 554-0892
greg.anderson@urovant.com

Urovant Sciences is a biopharmaceutical company focused on developing and commercializing therapies for patients. Urovant Sciences, a subsidiary of Sumitomo Dainippon Pharma Co., Ltd., intends to develop treatments for additional diseases. Learn more about us at www.urovant.com.

Continued on the next page →

2022 Annual Trade Show Exhibitors (E)



Viatrix Respiratory
Mick Sullivan, MBA
LTC Account Director – Florida
777 97th Ave. N
Naples, FL 34108
(715) 892-5949
mick.sullivan@viatrix.com

Viatrix is a unique global healthcare company focused on a wide variety of therapeutic areas, empowering people worldwide by expanding their access to a broad range of trusted, quality medications, regardless of geography or circumstance.



VITAS Healthcare
Laura Ramirez Pinzon, DMD
Director of Market Development
2201 Lucien Way, Ste. 100
Maitland, FL 32751
(407) 875-0028
Fax: (877) 848-2702
laura.ramirezpinzon@vitas.com

A hospice pioneer since 1978, VITAS® Healthcare is the nation's leading provider of end-of-life care. Patient-centered, comfort-focused care by an interdisciplinary VITAS team reduces hospital readmissions, length of stay, and overall healthcare costs while improving quality metrics and patient satisfaction.

Call 800.93.VITAS. Visit VITAS.com. Download the mobile referral app at VITASapp.com.



Vohra Wound Physicians
Brad Sherwood
Director of Business Development
3601 SW 160th Ave.
Miramar, FL 33027
(954) 399-4648
bsherwood@vohraphysicians.com

Vohra Wound Physicians is the nation's largest physician group specialized in wound management. Our physicians partner with 3,000 skilled-nursing facilities in 28 states. We partner with post-acute care facilities to develop center of excellence programs that are physician led, patient centric, and data driven. We provide comprehensive training for our facility nurses with certification & CEUs.

Call for Presentations: 2023 Annual Conference

The CME/Education Committee for Best Care Practices in the Post-Acute and Long-Term Care Continuum invites you to submit educational program proposals and abstracts for the 2023 annual conference. Submissions should be based on current trends and best practices in post-acute, long-term care, and geriatrics. Of special interest is emerging clinical information, research, innovations in non-pharmaceutical modification of challenging behaviors, emerging concepts in management and medical direction, and updates on approaches to regulatory compliance. The Committee also seeks proposals that emphasize strategies for successful cooperation with advanced practice nurses, physician assistants, directors of nursing, consultant pharmacists, and administrators, as well as the entire interdisciplinary team.

Year after year, conference evaluations show that a majority of attendees come for the educational programs and the associated continuing-education credits. Our attendees expect clinical topics to be evidence-based with cited references, and management topics to be relevant to their setting and grounded in best practices. For their learning experience, attendees seek opportunities to network with colleagues and engage in interactive presentations through various formats such as point-counterpoint, case-based discussion (Q&A), small groups and/or role play, and practical information for valuable take-home tools such as handouts, key points, guides, or quick tips.

If you have an interest in presenting at the 2023 conference, or know some knowledgeable and excellent speakers, please be directed to our proposal submission page at www.bestcarepractices.org.

— **Submission Site Opens: Nov. 30, 2022**

— **Speaker Presentation Submission Deadline: Feb. 17, 2023**

For information, contact the FMDA business office at ian.cordes@fmda.org or call (561) 689-6321.



Best Care Practices in the Post-Acute and Long-Term Care Continuum 2022
Joint Provided by FMDA & AMDA



CompMed[>]

Medical Billing

Post-Acute & Long-Term Care

#1 Way To Improve Your Business



www.comp-med.com

GUIDESTAR ELDERCARE IS PROUD TO SPONSOR THE FMDA AND BEST CARE PRACTICES PALTC 2022!

On-Site Neurology-Based Behavioral Health and Psych Services

- **Clinical Psychiatry Services**
 - Antipsychotic Stewardship Program
 - Medication Management
 - 24/7 365 On-Call Coverage for partner facilities
- **Behavioral Health Services**
 - Assessments
 - Therapies
- **Neurological Services**
 - On-Site screenings to appropriately diagnose

 **GuideStar Eldercare**
Embracing Our Past. Building The Future.®

Optum



Partnership, service, care

The Optum care model and UnitedHealthcare Nursing Home Plan provide clinical care, specialized health care benefits and 24/7 telephonic support.

Learn more at optum.com/snf

© 2022 Optum, Inc. All rights reserved. WF6331817 02/22

UROVANT[®]
SCIENCES

101 – Long COVID – State of the State

(0.75 hour)

Diane Sanders-Cepeda, DO, CMD

LEARNING OBJECTIVES

At the conclusion of this program, attendees should be able to:

1. Describe the known and predicted prevalence of Post-acute sequela of COVID-19
2. Review current literature related to Post-acute sequela of COVID-19 highlighting new and ongoing research
3. Discuss the clinical outcomes and results that are being attributed to Long COVID

NOTES

[illegible]

Thursday, Nov. 3, 2022 ❖ 8:45-9:30 a.m.

102 – Healing Challenges Associated with COVID-19 Skin and Long-Haulers

(0.75 hour)

Pamela Scarborough, PT, DPT, MS,
CWS, CEEAA

LEARNING OBJECTIVES

At the conclusion of this program, attendees should be able to:

1. Examine how COVID-19 can create skin manifestations that have implications for diagnosis, cohorting, and treatment, and that Long-Hauler morbidity can include skin manifestations among other lingering symptoms
2. Discuss that COVID-19 causes multiple and varied skin manifestations
3. Compare COVID-19 skin disruptions to other skin manifestations that look similar to but are NOT COVID-19 skin issues
4. Define Long COVID and describe symptoms associated with COVID Long Haulers
5. Discuss treatment options and rehabilitation guidelines for COVID Long Haulers

NOTES

[illegible]

Thursday, Nov. 3, 2022 ♦ 9:35-10:20 a.m.

103 – Boots on the Ground: A Panel Discussion

(1.5 hours)

Carmelle Casimir, APRN
Swati Gaur, MD, MBA, CMD
Ginny Hoar, PharmD, BCGP
David A. Nace, MD, MPH, CMD

LEARNING OBJECTIVES

At the conclusion of this program, attendees should be able to:

1. Describe the lingering impact of COVID-19 on our facilities and the recovery path for PALTC communities
2. Discuss the real-world impact of Post-acute sequela of COVID (Long COVID) in PALTC
3. Review clinical case studies to describe how we are identifying and managing PALTC residents with Long COVID
4. Explain what an interdisciplinary approach in PALTC should be as it relates to Long COVID diagnosis and management

NOTES

[illegible]

Thursday, Nov. 3, 2022 ❖ 10:25-11:55 a.m.

104 – EKG Abnormalities in PALTC in the COVID Era

(2.0 hours)

Elizabeth Hidlebaugh, MD
Bernardo J. Reyes, MD, CMD, AGSF

LEARNING OBJECTIVES

At the conclusion of this program, attendees should be able to:

1. Describe the normal physiology of cardiac electrophysiology
2. Interpret and analyze normal variants of ECG strips and determine rate, regularity and rhythm
3. Recognize common ECG abnormalities associated with COVID-19, in clinical scenarios among PALTC patients
4. Identify basic dysrhythmias and their association with common clinical conditions, including COVID-19, presenting in PALTC patients

NOTES

[illegible]

Thursday, Nov. 3, 2022 ♦ 12:50-2:50 p.m.

105 – Prognostication: Including Attributes and Predictors of Long COVID

(1.0 hour)

Leonard R. Hock Jr., DO, MACOI, CMD

LEARNING OBJECTIVES

At the conclusion of this program, attendees should be able to:

1. Describe the relevance of assessing functional status as a component of prognostication
2. Compare and contrast Basic Activities of Daily Living (BADLS), Instrumental Activities of Daily Living (IADLs), and AADLs (Advanced Activities of Daily Living)
3. Identify and demonstrate use of at least one screening tool and/or one physical performance measure to assess functional status in each of the three categories of ADLs
4. Discuss the relevance of lag time to benefit of select interventions and estimated prognosis for shared decision making
5. Describe four general methods of estimating prognosis
6. Apply at least one prognostication tool that can assist in clinical decision making for the care of an older adult
7. Discuss the attributes and predictors of Long COVID

NOTES

[illegible]

Thursday, Nov. 3, 2022 ♦ 3-4 p.m.

106 – The Importance of Deprescribing for Older Adults

(1.0 hour)

Wilfredo C. Aqui Jr., PharmD, MT
Ginny Hoar, PharmD, BCGP

LEARNING OBJECTIVES

At the conclusion of this program, attendees should be able to:

1. Identify common patterns of polypharmacy in the post-acute and long-term care patient
2. Discuss the importance of patient-centered pharmaceutical care
3. Describe prescribing cascades and implement strategies to prevent them
4. Plan and implement a facility-based interdisciplinary deprescribing program

NOTES

[illegible]

Thursday, Nov. 3, 2022 ♦ 4:10-5:10 p.m.

107 – Mindfulness: Taking Care of You While You Take Care of Others

(1.0 hour)

Laura Tubbs, RN, MSN, MSED, CDP,
CQP, LNHA

LEARNING OBJECTIVES

At the conclusion of this program, attendees should be able to:

1. Demonstrate two mindfulness techniques
2. Identify two EVBP causes of burnout
3. Describe common symptoms people experience when stressed
4. Create a self-maintenance plan

NOTES

Thursday, Nov. 3, 2022 ♦ 5:20-6:20 p.m.

108 – Update on Telemedicine Research

(1.0 hour)

John Whitman, MBA, NFA

LEARNING OBJECTIVES

At the conclusion of this program, attendees should be able to:

1. Discuss the benefits and realities of using telemedicine services to help prevent unnecessary hospital admissions of residents
2. Explain that telemedicine services are not competitive with PCPs and are actually a valuable resource for physicians
3. Review the findings of a one-year CMS study in Florida looking at the impact of telemedicine in 28 SNFs; this study evaluated the ability to prevent unnecessary and avoidable SNF to hospital admissions and estimated the economic impact on each of the participating facilities as well as the economic impact on Medicare
4. Based on study findings, describe the important role medical directors and local PCPs play in determining if a telemedicine service will or will not be successful

NOTES

Thursday, Nov. 3, 2022 ♦ 5:20-6:20 p.m.

109 – Coping with Healthcare Worker Burnout

(1.0 hour)

Christine Cauffield, PsyD

LEARNING OBJECTIVES

At the conclusion of this program, attendees should be able to:

1. Identify signs and symptoms of healthcare worker burnout
2. Differentiate between compassion fatigue and burnout
3. Review contributing factors that have escalated healthcare worker burnout
4. Discuss self-care strategies for reducing/eliminating burnout
5. Define workplace strategies to address healthcare worker burnout

NOTES

[illegible]

Thursday, Nov. 3, 2022 ♦ 6:30-7:30 p.m.

110 – Specialized Care for People Living with Dementia

(1.0 hour)

Michelle Moccia, DNP, ANP-BC, GS-C
Michelle Panlilio, DNP, GNP-BC

LEARNING OBJECTIVES

At the conclusion of this program, attendees should be able to:

1. Describe components of a comprehensive dementia care model across settings and during transitions of care
2. List at least three changes to practice related to assessment of the patient-caregiver dyad
3. Discuss at least three changes to practice related to management of the patient-caregiver dyad

NOTES

[illegible]

Thursday, Nov. 3, 2022 ♦ 6:30-7:30 p.m.

111 – Keynote Address: Florida
State of Medicine: How we got
here, where we are, and how to
improve

(1.0 hour)

Joshua D. Lenchus, DO, RPh, FACP, SFHM

LEARNING OBJECTIVES

At the conclusion of this program, attendees should be able to:

1. Understand the current state of physician practice in Florida
2. Discuss the benefits of organized medicine
3. Review the state of collaborative practice
4. Describe what the future of medicine will represent to our practice

NOTES

[illegible]

Friday, Nov. 4, 2022 ❖ 8:45-9:45 a.m.



Best Care Practices in the Post-Acute and Long-Term Care Continuum 2022

Joint Provided by FMDA & AMDA

112 – Managing Delirium in PALTC

(1.0 hour)

Gregory A. Sullivan, MD

LEARNING OBJECTIVES

At the conclusion of this program, attendees should be able to:

1. Summarize the most common clinical presentation of delirium
2. Describe the role of structured delirium screening instruments in PALTC
3. Discuss both common and rare contributors to development of delirium
4. Review pharmacologic and non-pharmacologic management of delirium
5. Outline the most effective strategies for prevention of delirium

NOTES

[illegible]

Friday, Nov. 4, 2022 ❖ 9:50-10:50 a.m.



113 – Moving from Pandemic to Endemic

(1.0 hour)

Elizabeth Borer, RN
David A. Nace, MD, MPH, CMD
Kimberly R. Smoak, MSH, QIDP

LEARNING OBJECTIVES

At the conclusion of this program, attendees should be able to:

1. Differentiate among endemic, outbreak, epidemic, and pandemic levels of disease occurrence
2. Describe the transition of COVID-19 from pandemic to endemic status across healthcare
3. Discuss the preparedness that PALTC facilities need to engage in today to move to endemic phase
4. Evaluate the role COVID-19 vaccines and pharmaceuticals will have in transitioning to endemic status
5. Discuss factors influencing vaccine hesitancy and vaccine apathy
6. Highlight educational strategies that clinicians in PALTC should be adopting to encourage vaccinations

NOTES

[illegible]

Friday, Nov. 4, 2022 ❖ 10:55-11:55 a.m.

114 – AMDA Public Policy Update

(1.0 hour)

Alex Bardakh, MPP, PLC, CAE

LEARNING OBJECTIVES

At the conclusion of this program, attendees should be able to:

1. Discuss federal and state activity to improve care in the PALTC environment
2. Identify ways clinicians can become better advocates for their practice and their patients
3. Summarize recommendations to improve care in nursing homes

NOTES

[illegible]

Friday, Nov. 4, 2022 ♦ 1-2 p.m.

117 – Red-Eye Rounds: PALTC & Geriatrics Clinical Quandaries

(1.0 hour)

Michelle A. Lewis, DNP, MSN, ARNP,
FNP-BC, GNP-BC

Paul Katz, MD, CMD

Simone Minto-Pennant, PharmD, BCPS, CPh

Naushira Pandya, MD, CMD, FACP

LEARNING OBJECTIVES

At the conclusion of this program, attendees should be able to:

1. Develop an effective approach to the differential diagnosis of common clinical issues in PALTC
2. Define current evidence-based therapeutic interventions for common clinical challenges in PALTC
3. Discuss an effective approach to the comprehensive management of common geriatric syndromes encountered in PALTC
4. Delineate effective strategies to prevent potentially avoidable hospitalizations

NOTES

[illegible]

Saturday, Nov. 5, 2022 ❖ 7-8 a.m.

118 – National Leaders Forum

(1.5 hours)

Robin Arnicar, RN, FACDONA, IP-BC
Suzanne Gillespie, MD, CMD, RD, FACP
Jennifer Kim, DNP, GNP-BC, GS-C,
FNAP, FAANP

LEARNING OBJECTIVES

At the conclusion of this program, attendees should be able to:

1. Describe where the PALTC system is heading, significant challenges the industry will face in the future, and some of the steps that need to be taken
2. Discuss opportunities for professional organizations to partner with each other and related LTC/geriatrics organizations to improve patient care
3. Identify current regulations and required processes that are clearly not in the best interest of the seniors we serve and certainly not in the best interest of the health care system from a cost standpoint
4. Summarize key factors that will impact (both positively and negatively) nursing homes in the next 5-10 years
5. Review approaches to enhance and measure quality of care at the interface of acute and post-acute care

NOTES

[illegible]

Saturday, Nov. 5, 2022 ❖ 9:05-10:35 a.m.

119 – Best Practices for Pain Management in PALTC

(1.0 hour)

F. Michael Gloth III, MD, FACP, AGSF, CMD

LEARNING OBJECTIVES

At the conclusion of this program, attendees should be able to:

1. Use appropriate instruments to assess pain
2. Determine etiology of pain
3. Select interventions appropriate for etiology of pain

NOTES

Saturday, Nov. 5, 2022 ♦ 10:45-11:45 a.m.

120 – Get Smart About Diabetes in the Geriatric Population

(1.0 hour)

David A. LeVine, MD, CMD

LEARNING OBJECTIVES

At the conclusion of this program, attendees should be able to:

1. Explain the pathogenesis of diabetes type II
2. Categorize the multiple pharmacologic treatments for diabetes
3. Describe how diabetes management differs in the elderly population
4. Design a plan for diabetes management of the elderly diabetic patient

NOTES

Saturday, Nov. 5, 2022 ♦ 1:50-2:50 p.m.

121 – AHCA Regulatory Update

(1.0 hour)

Kimberly R. Smoak, MSH, QIDP

LEARNING OBJECTIVES

At the conclusion of this program, attendees should be able to:

1. Identify the most commonly cited deficiencies and ways to improve to avoid these areas of non-compliance
2. Discuss and review any new and significant changes to the nursing home regulatory requirements
3. Summarize the 2021-2022 immediate jeopardy findings for nursing homes and discuss how the role of medical director, nurse leader, and pharmacist can help nursing homes identify areas for improvement to avoid immediate jeopardy findings

NOTES

[illegible]

Saturday, Nov. 5, 2022 ♦ 2:55-3:55 p.m.

122 – Medicare Billing & Coding Update

(1.0 hour)

Robert A. Zorowitz, MD, MBA, FACP

LEARNING OBJECTIVES

At the conclusion of this program, attendees should be able to:

1. Be prepared to implement any new 2023 coding and documentation guidance for services in PALTC
2. Describe the differences between payment policy, involving reporting and coding guidelines, from federal nursing home regulations, such as visit frequency and other requirements
3. Discuss which services may and may not be performed by telehealth in PALTC
4. Identify the reporting requirements for related services in PALTC, including but not limited to face-to-face and non-face-to-face prolonged services
5. Review the controversies and opportunities in reporting services not originally intended for the nursing home setting
6. Know where to find further information on reporting services performed in PALTC

NOTES

[illegible]

Saturday, Nov. 5, 2022 ♦ 4-5 p.m.

123 – Medical Care of LGBTQ+ Older Adults in PALTC

(1.0 hour)

Jonathan Appelbaum, MD

LEARNING OBJECTIVES

At the conclusion of this program, attendees should be able to:

1. Describe the demographics of the LGBTQ+ community and older LGBTQ+ persons in particular
2. Define LGBTQ+ terminology
3. Describe a patient-centered, culturally competent approach to gathering data and examining older LGBTQ+ persons
4. Articulate some of the unique medical issues of older LGBTQ+ persons and the challenges they face in PALTC
5. Describe strategies to create a culturally appropriate environment for older LGBTQ+ persons in PALTC

NOTES

[illegible]

Saturday, Nov. 5, 2022 ♦ 4-5 p.m.

124 – Keynote Address – State of the Hospice Benefit 2022

(1.0 hour)

Joseph Shega, MD

LEARNING OBJECTIVES

At the conclusion of this program, attendees should be able to:

1. Recognize hospice as an at-risk, value-based care model
2. Describe hospice ownership and its relationship to practice patterns, including diversity, equity, and inclusion
3. Identify two approaches to improve hospice access and better end-of-life outcomes for patients, families, and the nursing home
4. Discuss hospice industry trends and regulatory pressures and how they translate to frontline experience

NOTES

[illegible]

Saturday, Nov. 5, 2022 ♦ 5:05-6:05 p.m.

(1.5 hours)

Niharika Suchak, MBBS, MHS, FACP, AGSF

LEARNING OBJECTIVES

At the conclusion of this program, attendees should be able to:

1. Identify areas in clinical medicine where new strong evidence has been uncovered that may affect geriatric practice
2. Describe the results of a critical appraisal of this evidence including limitations and pitfalls of published articles
3. Discuss clinical advances in caring for older adults from a review of recent select peer-reviewed journal articles

NOTES

[illegible]

Sunday, Nov. 6, 2022 ❖ 7:45-9:05 a.m.



126 – A Case-Based Approach to Optimal Pharmacotherapy

(1.0 hour)

Naushira Pandya, MD, CMD, FACP
Meenakshi Patel, MD, FACP, MMM, CMD

LEARNING OBJECTIVES

At the conclusion of this program, attendees should be able to:

1. Identify adverse events associated with polypharmacy in older adults
2. Describe practical tips to successfully deprescribe to improve outcomes
3. Discuss common drug-drug and drug-disease interactions.
4. Develop strategies to safely deprescribe when clinically appropriate

NOTES

[illegible]

Sunday, Nov. 6, 2022 ❖ 9:15-10:10 a.m.



127 – Breaking Free from Osteoporosis

(1.5 hours)

Justin C. Hess, PT, DPT, OCS
Melanie Trigo, PharmD
Brianna Wynne, MD

LEARNING OBJECTIVES

At the conclusion of this program, attendees should be able to:

1. Describe the pathophysiology of osteoporosis and ways to prevent and diagnosis this disease
2. Recognize the various non-pharmacological and pharmacological options for the treatment of osteoporosis
3. Identify the different therapeutic classes, mechanisms of action, dosages, side effects and contraindications associated with approved drug therapy for the treatment of osteoporosis
4. Assess and screen for vertebral compression fractures.
5. Instruct others on safe movement and strengthening options for the frail patient to optimize health and minimize risk of future fractures

NOTES

[illegible]

Sunday, Nov. 6, 2022 ❖ 10:15-11:35 a.m.

128 – Effective Usage of Psychiatric Medications in Nursing Facilities

(1.0 hour)

Pari Deshmukh, MD

LEARNING OBJECTIVES

At the conclusion of this program, attendees should be able to:

1. Discuss the details of commonly used psychiatric medications
2. Describe underutilized effective psychiatric medications
3. Optimize the medications patients are already on to avoid adding more medicines leading to polypharmacy
4. Identify effective combinations of psychiatric medicines to minimize polypharmacy
5. Implement evidence- and experience-based psychiatric medicinal approaches in daily practice

NOTES

[illegible]

Sunday, Nov. 6, 2022 ❖ 11:40 a.m.-12:40 p.m.

POSTER SESSION SCHEDULE

Please join our presenters in Tuscan III-IV

Friday, Nov. 4

2:05-3:15 p.m.; 5:25-6:55 p.m.

Saturday, Nov. 5

8-9 a.m., 11:45 a.m.-12:50 p.m.

Presenter Recognition: 6:10-7:40 p.m.

The Poster Review Committee wishes to thank this year's presenters:

Current as of Oct. 28, 2022

Telemedicine for Nursing Home Provider Visits During the COVID-19 Pandemic

Authors: Anupam Chandra, MD; Paul Y. Takahashi, MD

Presenter: Anupam Chandra, MD; Mayo Clinic, Rochester, MD

Introduction and Objective: Many institutions adopted telemedicine in skilled nursing facilities (SNF) during the COVID-19 pandemic. Healthcare providers and facilities had to rapidly adapt to this modality. We surveyed visiting providers to obtain their perspective on the practical aspects and care quality with telemedicine.

Methods: We surveyed 50 providers practicing in 19 SNFs served by Mayo Clinic from March to July 2020 on technical components, domains of patient assessment, and care delivery with telemedicine. We additionally sought providers' assessment on telemedicine's impact on care of residents with various disabilities. Responses in the REDCap® Survey instrument were analyzed using descriptive statistics on central tendency and variance.

Results: Twenty-four providers responded to the survey. 92% reported over 75% of visits were conducted via telemedicine. 100% of responders considered availability of high-quality audiovisual connection and over 70% considered access to SNF medical records and skilled proxies for examination as very important to conduct visits. 58.3%, 25%, and 29% of providers believed care was negatively impacted for residents with impaired hearing, vision, and cognition, respectively. Respiratory and cardiovascular examination were considered negatively impacted by over 45% of providers. No negative impacts on medication assessment, orders, followup, or staff interactions were reported. 12.5% believed overall care quality was impacted negatively. 62.5% believed that telemedicine improved access and timeliness. While 50% of providers believed that telemedicine was inappropriate for admissions, 80% considered it appropriate for recertification visits.

Conclusion: With current demographic trends, healthcare shortages, and available technology, the potential of telemedicine in SNFs should be explored. This survey provided valuable perspectives on technical aspects and impact of telemedicine on care quality in this cohort. Further studies are needed to determine whether telemedicine may have a sustained role in SNFs.

Face-to-Face Nursing Home Visits During COVID-19 Pandemic: A Safe Intervention

Authors: Vanessa M. Evardone, MD; Maura Miller, PhD; Gelda Pratt, RN; Jessica Gendernalik, MD; Maribel Rodríguez, MD; Mythili Bharadwaj, MD; and Michael A. Silverman, MD

Presenters: Vanessa Joyce Evardone, MD, Geriatric Medicine Fellow, West Palm Beach VA Medical Center; and Jessica Gendernalik, MD (co-presenter), West Palm Beach VA Medical Center

Background: COVID-19 pandemic has had a major disproportionate effect on morbidity and mortality of nursing home residents, accounting for 40% of all COVID-19 deaths, necessitating “lockdowns” to limit exposure. This has prevented loved ones from visiting, leading to significant social isolation and loneliness among our Veteran residents, exposing them to medico-psychological issues and increased risk of premature deaths from all causes. Various interventions tried showed only modest benefits.

Objective: To foster behavioral health and mitigate the adverse health impact of social isolation on Veterans, West Palm Beach Veterans Administration Medical Center – Community Living Center (WPBVAMC–CLC) employed a novel non-pharmacological approach using therapeutic outdoor visits with loved ones at the Butterfly Garden.

Methods: Award-winning “Therapeutic Gardening Program” at the WPBVAMC–CLC began in 2005 to improve the quality of life of elderly Veterans. Garden built next to the CLC has subtropical flowering plants, butterflies, birds, and chameleons, overlooking a pond. Thirty-minute visits allowed four times a week per resident. Safety ensured by strict compliance to CDC guidelines. Visitors and residents gowned up, gloved, and wore masks, to allow human touch.

Results: Since its initiation in December 2020, there have been 1,856 therapeutic visits without any documented exposure to COVID-19. Participants were extremely appreciative of these visits, when they can touch and hug loved ones, though many wished for longer time during visits.

Conclusion: To overcome social isolation related to COVID-19 lockdown, the novel approach of therapeutic face-to-face outdoor visits employed by the WPBVAMC–CLC has been successful in allowing loved ones to safely visit our nursing home residents. This could serve as a model for similar facilities to address the negative consequences of social isolation during the COVID-19 pandemic.

Increasing Awareness of Appropriate Physical Restraint Use in Hospitalized Older Adults

Authors: Fallon Longmire, MD; Hyewan Yang, APRN; Brianna Wynne, MD; Susan Schneider, MD, MSPH

Presenter: Fallon Longmire, MD; Geriatric Medicine Fellow, University of Florida

Background/Introduction: The use of physical restraints in hospitalized older adults has become routine, as opposed to a last resort. The premise of using physical restraints is to ensure safety when a patient is at immediate risk of injuring themselves or others; however, physical restraints have become more common in the hospital setting for reasons other than safety. We have observed the use of physical restraints for reasons such as: patient interfering with treatment, high risk of falling, diagnosis of dementia, understaffing, inadequate training, and convenience. The use of physical restraints has negative psychologic and physiologic outcomes as well as ethical concerns. It delays discharge to skilled nursing and long-term care facilities. We have proposed a quality improvement project to increase awareness of the appropriate use of physical restraints in hospitalized older adults.

Methods: We will collect data from an anonymous written questionnaire of various hospital staff with diverse education and training levels. The questionnaire will ask for participants’ role, number of years working in healthcare, familiarity with restraints, general knowledge about restraint use, and give information regarding our institutional policy on restraint use. After the questionnaire is completed, we will provide basic educational material on physical restraints, including correct use, for participants to review. We will assess the results and determine if there are common factors that lead to misuse of physical restraints.

Results: We plan to review the number of physical restraint orders in the pre-questionnaire and post-questionnaire/education periods to determine if this intervention decreases the use of physical restraints in hospitalized older adults.

Conclusion: This is an ongoing project and we plan to present preliminary findings.

Effectiveness of Electrical Cardioversion Among Older Adults in the Long-Term Care Setting Diagnosed with Atrial Fibrillation

Authors: Daniel Padron, MS3; Shannu Satyavolu, MD; Melisa Rodriguez Suliman, MS3; Adam Kirstein, MD; Gabriella Engstrom, PhD; Bernardo Reyes Fernandez, MD; Florida Atlantic University Charles E. Schmidt College of Medicine

Presenter: Daniel Padron, Medical Student M3; Florida Atlantic University Charles E. Schmidt College of Medicine

Background: Rhythm control strategies, such as electrical cardioversion (ECV), are commonly chosen as treatment for patients with persistent symptomatic AF. To our knowledge, there is limited information on ECV effectiveness among older adults in the long-term care setting. The aims of this study are to determine if ECV is less effective among patients aged 75 and older on restoring sinus rhythm, and were these patients less likely to return to the hospital at 30 days post-discharge than patients with an ineffective ECV.

Results: This is a retrospective study composed of adults aged 75 and older who were admitted to a community teaching hospital from November 2017 to November 2020 with the diagnosis of AF and underwent ECV during admission. For the purpose of our analysis, patients were stratified based on age (75-84 and ≥ 85) and discharge location (home or acute/long-term care facility). Our cohort included 13,907 admissions with a diagnosis of AF. Patients with AF who underwent ECV accounted for 320 of these admissions. From those 320 admissions, 189 (59%) were between the ages of 75-84, while 131 were ≥ 85 (41%). Within the 75-84 age group, there was no significant difference in 30-day readmission rates between the effective and ineffective ECV groups and between discharge locations ($p=0.907$; $p=0.327$). Similar results were obtained within the ≥ 85 age group ($p=0.696$; $p=0.589$, respectively). We found no statistically significant differences in effectiveness of ECV between age groups, and between discharge location and 30-day hospital return rates.

Conclusions: Our results support the continued use of ECV in geriatric populations; however, given the lack of significant reduction in hospital readmissions, the question of whether ECV leads to better long-term outcomes in these patients still remains.

Interdisciplinary Antipsychotic Stewardship Between Operator and Neurobehavioral Consultant

Author and Poster Presenter: Steven Posar, MD; CEO/Founder, GuideStar Eldercare

Background: Antipsychotic utilization in skilled nursing facilities (SNFs) is a major focus of regulatory compliance and a key theme in resident care. Due to a slowing of industry-wide advancements in the care of behavioral and psychological symptoms of dementia (BPSD), the Federally mandated patient-centered care initiative has not widely incorporated “best practices” for BPSD care. In a shared initiative with this operator, we have implemented a joint program focused on rigorous clinical diagnosis and “best practices” in pharmacology support, specifically aimed at assessing and reducing antipsychotic use whenever appropriate.

Methods: In three targeted buildings, all patients identified as receiving antipsychotic medication were enrolled in a specific assessment and treatment protocol designed to mitigate antipsychotic use where possible. Behavioral documentation for each resident was reviewed, and a team approach to polypharmacy, all psychotropic medications, and antipsychotic reductions were implemented. Data was verified by facility pharmacy records detailing the proportion of residents taking antipsychotic medications were generated in January, March, and July of 2021.

Results: Prior to full implementation of the protocol, antipsychotic rates were 32%, 14%, and 18% in the three buildings. Following initial review, rates were noted to be similar to baseline. After implementation of clinical protocols, we found that the proportion of residents using antipsychotic medications declined to 9.6%, 4.2%, and 6.3%, respectively. In addition, there were no noted harms, nor deteriorations related to the discontinuation of these medications.

Conclusion: Implementation of a shared cooperative clinical protocol between the SNF facility staff and clinical treatment team resulted in a reduction of antipsychotic use of more than 65% with no noted harms nor clinical decline.

Implementation of the 4M Framework of Age-Friendly Health Care in a Geriatric Outpatient Setting

Presenter: Sweta Tewary, PhD; Assistant Professor, Nova Southeastern University

Objective: To describe preliminary outcomes after incorporating the 4M framework of Age-Friendly Healthcare into a primary care setting through retrospective chart review methodology

Background: Age-Friendly Health Care aims at providing high-quality geriatric care through the 4Ms framework (What Matters, Medication, Mentation, and Mobility). Nova Southeastern University's South Florida Geriatric Workforce Enhancement Program achieved Level 1 certification through the Institute of Health Care Improvement and is working towards improving Age-Friendly Health System (AFHS) transformation in Broward and Miami-Dade counties. This quality improvement project focuses on results from retrospective chart review in a three-month time period from October 2021 to December 2021 in a primary care geriatric clinic.

Method: In this project, we developed and implemented a structured chart review protocol to evaluate the documentation of 4Ms for 146 geriatric patients aged 65 and above seen in past one year. The chart review focused on medication review and reconciliation; mentation, addressing depression or cognition through PHQ2, MoCA, Mini-Cog, MMSE, and qualitative comments; mobility, through falls questions, TUG test, exercise, and PT referral; what matters most, through advance care planning (ACP) documentation; and utilization of a comprehensive Medicare Preventative template in the electronic health record.

Results: Data from chart review suggest 100% completion of medication review and reconciliation for 146 patients. Mentation was documented for 41 patients (28%). Mobility was addressed for 57 (39%) and Matters Most was completed for 20 (13.7%) patients. Overall, 5 (2%) had all 4Ms completed.

Conclusion: Using a retrospective chart review was helpful in identifying gaps in providing age-friendly health care using the 4M framework. Data from this chart review will be used to inform providers and followup with patients to maximize 4Ms screening and documentation.

ATTENTION: **Staff, Consultants, and Students** **Enhance Your Clinical Competencies,** **Knowledge, and Skills** **in Skilled Nursing Facilities**



Participants who complete FMDA's on-demand program will be empowered on numerous levels to provide better patient-centered care to skilled nursing facility residents. The Certificate of Excellence in PALTC affirms a knowledge and experience base for practitioners and demonstrates to employers and the public that the practitioner is committed to career development and dedicated to quality care as well as the credibility and profile of the practitioners in these settings.

**Apply for
a full
scholarship at
cms.fmda.org**



Elevate Your Professional Reputation **– Deadline to Apply for a Full Scholarship is Dec. 31, 2022**

- The program is designed to close the gap related to clinical care and regulatory compliance in nursing homes by awarding full tuition scholarships to eligible physicians, advanced practice nurses, physician assistants, consultant pharmacists, nurse administrators, registered nurses, students, nursing home administrators, and eligible students across the State of Florida.
- The faculty includes national and regional authorities in the fields of medical direction, senior care pharmacology, post-acute and long-term care medicine, and geriatric medicine.
- Clinicians interested in a full tuition scholarship to attend *Leveraging Clinical Staff Engagement – A Certificate of Excellence in PALTC* may apply online at cms.fmda.org.

Discover a unique clinicians' **Certificate of Excellence in PALTC**
to enhance competencies, knowledge, and skills
in this ever-changing environment
– with a sophisticated on-demand format.

TIMES

EVENT

8 a.m.-6:45 p.m.
8:45-9:30 a.m.
9:35-10:20 a.m.
10:25-11:55 a.m.
11:55 a.m.-12:50 p.m.
12:50-2:50 p.m.
3-4 p.m.

Thursday, Nov. 3

OPTIONAL PRE-CONFERENCE

Registration & Information Ligurian I
101 – Long COVID: State of the State Ligurian II-III
102 – Healing Challenges Associated with COVID-19 Skin and Long-Haulers Ligurian II-III
103 – Boots on the Ground: A Panel Discussion Ligurian II-III
Lunch on your own
104 – EKG Abnormalities in PALTC in the COVID Era Ligurian II-III
105 – Prognostication: Including Attributes and Predictors of Long COVID Ligurian II-III

START OF CONFERENCE

4:10-5:10 p.m.
5:20-6:20 p.m.

106 – The Importance of Deprescribing for Older Adults Ligurian II-III

CONCURRENT SESSIONS A

107 – Mindfulness: Taking Care of You While You Take Care of Others Venetian I
108 – Update on Telemedicine Research Venetian II

CONCURRENT SESSIONS B

109 – Coping with Healthcare Worker Burnout Venetian I
110 – Specialized Co-Management Care for People Living with Dementia Venetian II

6:30-7:30 p.m.

Friday, Nov. 4

7:15 a.m.-6 p.m.
7:30-8:30 a.m.
7:45-8:30 a.m.
8:35-8:45 a.m.
8:45-9:45 a.m.
9:50-10:50 a.m.
10:55-11:55 a.m.
12-1 p.m.
1-2 p.m.
2:05-3:05 p.m.
3:15-4:15 p.m.
4:20-5:20 p.m.
5:25-6:55 p.m.

Registration & Information Ligurian I
Continental Breakfast – Thanks to The Rose Program Venetian Foyer
FMDA Annual Membership Meeting Ligurian II
President's Welcome – Diane Sanders-Cepeda, DO, CMD Venetian III-V
111 – Keynote Address – Florida State of Medicine: How we got here, where we are, and how to improve Venetian III-V
112 – Managing Delirium in PALTC Venetian III-V
113 – Moving from Pandemic to Endemic Venetian III-V
Lunch with the Exhibitors – Thanks to Neurocrine Tuscan III-V
114 – AMDA Public Policy Update Venetian III-V
Grand Opening of Trade Show, Poster Presentations, and Silent Auction Tuscan III-IV
115 – Recognizing Burnout in Those Caring for Patients with Dementia Venetian III-V
116 – Improving PALTC Venetian III-V
Exhibit Hall Welcome Reception Tuscan III-IV
Thanks for the refreshments to **VITAS Healthcare**: 31st Annual Diamond Sponsor

Saturday, Nov. 5

6:30 a.m.-5:45 p.m.
7-8 a.m.
8-9 a.m.

9:05-10:35 a.m.
10:45-11:45 a.m.
11:45 a.m.-12:50 p.m.
12:50-1:50 p.m.
1:50-2:50 p.m.
2:55-3:55 p.m.
4-5 p.m.

Registration & Information Ligurian I
117 – Red-Eye Rounds: PALTC & Geriatrics Clinical Quandaries Venetian III-V
Continental Breakfast in Exhibit Hall with Trade Show, Poster Presentations, and Silent Auction Tuscan III-IV
Sponsored by **VITAS Healthcare**: 31st Annual Diamond Sponsor
118 – National Leaders Forum Venetian III-V
119 – Best Practices for Pain Management in PALTC Venetian III-V
Break in Exhibit Hall with Trade Show, Poster Presentations, and Silent Auction Tuscan III-IV
Product Theater Luncheon (non-CME/CPE/CE) – Thanks to **Viatrix** Tuscan I-II
120 – Get Smart About Diabetes in the Geriatric Population Venetian III-V
121 – AHCA Regulatory Update Venetian III-V

CONCURRENT SESSIONS C

122 – Medicare Billing & Coding Update Tuscan I
123 – Medical Care of LGBTQ+ Older Adults in PALTC Tuscan II

5:05-6:05 p.m.
6:10-7:40 p.m.

124 – Keynote Address: State of the Hospice Benefit 2022 Venetian III-V

President's Wine & Cheese Reception

Sponsored by **Optum**

Quality Champion Award: Sponsored by **Optum**

Sunday, Nov. 6

6:45-7:45 a.m.
7:15 a.m.-12:45 p.m.
7:30-8:30 a.m.
7:45-9:05 a.m.
9:15-10:10 a.m.
10:15-11:35 a.m.
11:40-12:35 p.m.
12:45 p.m.

Conference Planning Committee Review & Wrap-up Breakfast Meeting Tuscan I
Registration & Information Ligurian I
Continental Breakfast Venetian III-V
125 – Geriatric Literature Review Venetian III-V
126 – A Case-Based Approach to Optimal Pharmacotherapy Venetian III-V
127 – Breaking Free from Osteoporosis Venetian III-V
128 – Effective Usage of Psychiatric Medications in Nursing Facilities Venetian III-V

END OF CONFERENCE: Announcements, Door Prizes, etc.

– Please note that the speakers and topics for this meeting are subject to change without notice.