



Best Care Practices

In the Post-Acute & Long-Term Care Continuum

October 24-27, 2019

Loews Sapphire Falls Resort at Universal Orlando

Joint Provided by FMDA – The Florida Society for Post-Acute and Long-Term Care Medicine and AMDA – The Society for Post-Acute and Long-Term Care Medicine

Syllabus

FMDA's 28th Annual Conference is held in collaboration with the Florida Chapters of Gerontological Advanced Practice Nurses Association, National Association Directors of Nursing Administration, and Florida Geriatrics Society.



THE FLORIDA SOCIETY
FOR POST-ACUTE AND
LONG-TERM
CARE MEDICINE



NADONALTC
NATIONAL ASSOCIATION DIRECTORS OF NURSING ADMINISTRATION/LONG TERM CARE



Florida Chapters

Loews Sapphire Falls Resort Convention Center

EVENT LOCATOR MAP

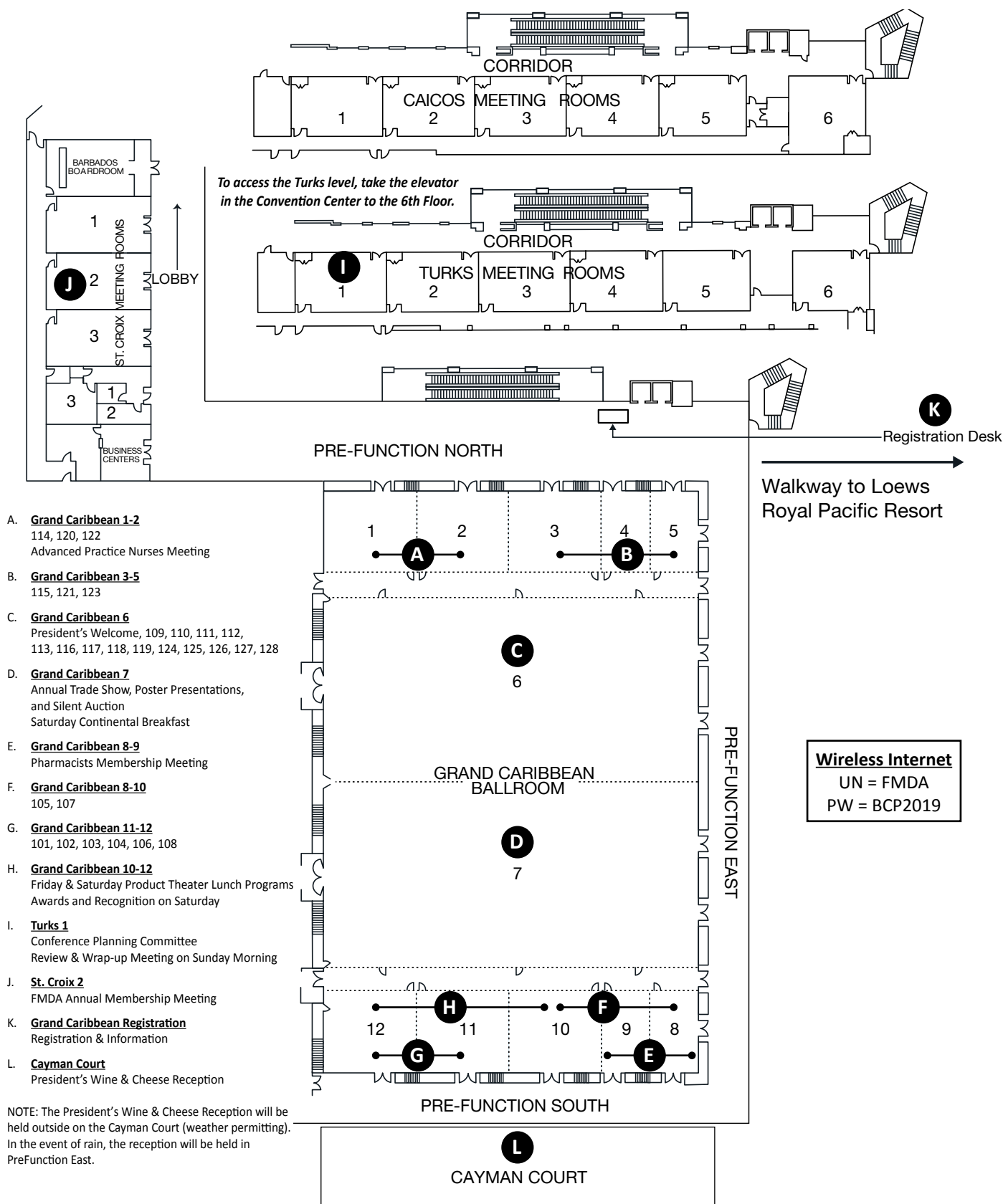


Table of Contents

WELCOME LETTERS	4-8
PROGRAM DESCRIPTION, TARGET AUDIENCE, AND OBJECTIVES	9
MEETING INFORMATION	
Continuing Education, CME/Education Committee, Certificates of Attendance / Tracking Sheets	10-13
CE Credits Calculated by Session and by Profession	13
FMDA APP AND AUDIENCE RESPONSE SYSTEM	14
SOCIAL MEDIA CONTEST	14
Conference Faculty: Speaker Biographies	15-22
Faculty Disclosures	22
RECOGNITION OF OUR SPONSORS.....	25-26
PROGRAM & SCHEDULE OF EVENTS	27-34
ANNUAL TRADE SHOW EXHIBITORS	36-38
2020 CALL FOR PRESENTATIONS	39
SESSION-BY-SESSION LEARNING OBJECTIVES.....	40-53
101 – Update on HIV/AIDS.....	40
102 – Domestic Violence	40
103 – Preventing Medical Errors.....	41
104 – Wound Care 101: Achieving Excellence Through Best Practices.....	41
105 – Plugging Technology into Health Care to Provide High Quality Care	
While also Tying in All Stakeholders Involved in the Patient’s Care	42
106 – Home Visiting Programs: A Study in Return to Hospital Reduction.....	42
107 – Sleepless in Orlando.....	43
108 – Advanced Directives 2019 Update: A Humorous Guide to a Serious Topic	43
109 – Keynote: State of the State	44
110 – Social Determinants of Health: Cohesion in Culture Change.....	44
111 – Update on Depression, Anxiety & Mood Disorders	45
112 – Public Policy Spotlight	45
113 – Update on Physician Orders for Life-Sustaining Treatments (POLST).....	46
114 – Strategies: How to React When a Lawsuit Falls on Your Lap	46
115 – Falls: What Causes Them and How Do We Prevent Them.....	47
116 – Red-Eye Rounds: PA/LTC and Geriatrics Clinical Quandaries.....	47
117 – National Leaders Forum.....	48
118 – Sepsis: Early Recognition & Optimizing Outcomes in LTC	48
119 – Clinical Leadership in the New Healthcare Era: Wait or Innovate?	49
120 – Physicians Are Essential to Post-Acute and Long-Term Care Success	49
121 – Using Data to Drive Antimicrobial Stewardship in PA/LTC Facilities.....	50
122 – Be a Full Code! CPT Coding in the Nursing Home	50
123 – The Patient Driven Payment Model (PDP) and the Impact on Resident Centered Care.....	51
124 – Common Symptoms of Syncope: Complex Causes — A Clinician's Approach	51
125 – AHCA Regulatory Update.....	52
126 – Innovative Approaches to Implement Evidence Based Deprescribing Practices in PA/LTC Setting	52
127 – SNF Five-Star Quality Metrics 101	53
128 – Opiate Withdrawal Management	53
2019 POSTER PRESENTATIONS.....	54-56

AMDA/FMDA Disclosure

Registrants for this program understand that medical and scientific knowledge are constantly evolving. The views and treatment modalities of the instructors are their own and may reflect innovations (including off-label or investigational use of medical products) and opinions not universally shared. Every effort has been made to assure the accuracy of the data presented at this program in the context of accepted medical practice. Prior to clinical application, physicians should check specific details such as drug doses and contraindications, off-label uses, or other details in standard sources. The views and treatment modalities of the instructors are not those of the AMDA or FMDA, but are presented in this forum to advance scientific and medical education. Registrants waive any claim against AMDA/FMDA arising from information presented at this program.



RON DeSANTIS
GOVERNOR

October 24, 2019

Dear Friends:

It is my pleasure to welcome you to Orlando for the Florida Medical Directors Association's (FMDA) Florida Society for Post-Acute and Long-Term Care Continuum's 28th Annual Conference. Thank you for providing high quality care to Florida's patients as they transition through the long-term care continuum.

Florida is proud to honor the many contributions of our seniors by learning from their wisdom and experiences. Our seniors play an important role in our communities, workplaces, and families. As our state moves forward, we will remain committed to helping them lead long, healthy and productive lives.

Best wishes for a memorable conference.

Sincerely,

A handwritten signature in dark ink, appearing to read "Ron DeSantis", written over a light blue circular background.

Ron DeSantis
Governor



THE FLORIDA SOCIETY
FOR POST-ACUTE AND
LONG-TERM
CARE MEDICINE

400 EXECUTIVE CENTER DRIVE, SUITE 208
WEST PALM BEACH FL 33401

Oct. 24, 2019

Dear Friends:

Welcome to our 28th Annual Conference. FMDA has witnessed the incredible growth of an organization that is dedicated to serving and representing its members in the best way possible. During the past 12 months, we have seen much of that hard work come to fruition. Membership is strong, and the influence of FMDA and its members is making more of an impact than ever.

FMDA remains committed to ensuring that its members have access to the latest information, opportunities for educational advancement, and the framework to advocate the positions that will benefit our profession and our patients.

We are excited to have you here. FMDA's annual conference has evolved into a regional gathering with national impact for medical directors, attending physicians, advanced practice nurses, consultant pharmacists, physician assistants, directors of nursing, and administrators working in the post-acute and long-term care continuum. It provides an opportunity to network and enjoy educational seminars from some of the top names in their areas of expertise.

We are always striving to improve, so we welcome your feedback. This is your association and your annual conference. Please take a few minutes to review the information in this syllabus and familiarize yourself with the format of the meeting.

The registration and information desk will be open all day on Thursday, Friday, Saturday, and half of Sunday. FMDA staff members remain available to answer any questions you may have. Please join us on Friday at 5:30 p.m. at the official Welcome Reception in the exhibit hall, sponsored by Optum.

Saturday's continental breakfast will be served in **Grand Caribbean 7**, so please take the opportunity to see some of the latest products and innovations by visiting with the companies that help make this conference possible. Make sure your Trade Show Exhibitor Card is initialed by each of the companies represented, for you to enter to win some of the great prizes to be awarded at the end of the Trade Show and at the last CME/CE program on Sunday. And remember: You must be present to win!

Be sure to join us at this year's **President's Annual Wine & Cheese Reception** on **Saturday** from **5:30 to 6:55 p.m.** at **Cayman Court**. This is yet another great opportunity to network and meet others who face the same challenges every day. Thanks to Consulate Health Care for their generous sponsorship of this reception for the fourth year in a row.

Be sure to sign in as directed, and complete the evaluation forms following each presentation that you attend. Remember to turn in the course evaluations and certificates of attendance before the conclusion of the conference.

Again, welcome to Best Care Practices in the Post-Acute and Long-Term Care Continuum 2019. This program promises to be the best one yet, and the planning committee and FMDA staff have put a lot of effort into making this conference as interesting and fun as possible.

We hope you find the conference to be a valuable asset to your work.

Yours truly,

Executive Committee, FMDA – The Florida Society for Post-Acute and Long-Term Care Medicine

President: Rhonda L. Randall, DO

Chairman of the Board: Robert G. Kaplan, MD, FACP, CMD

Vice President/President-Elect: Angel Tafur, MD, CMD

Secretary/Treasurer: Michael G. Foley, MD, CMD

Immediate Past-President: Leonard Hock Jr., DO, MACOI, CMD



Welcome to Best Care Practices in the Geriatrics Continuum 2019!

The Florida Chapters of GAPNA would like to extend a warm welcome to all of the Advanced Practice Nurses attending this year's Best Care Practices in the Post-Acute and Long-Term Care Continuum Conference. The focus of the conference is providing care of the older adult in PA/LTC settings.

FMDA in collaboration with FL-GAPNA, Gulf Coast GAPNA, and other professional associations has put together a well-rounded curriculum for all of us caring for the older adult in PA/LTC. This will be an exciting four days for all those attending.

We, as nurse practitioners, embrace the opportunity to work with FMDA and participate in the Best Care Practices in the Post-Acute and Long-Term Care Continuum in 2019. Our collaboration with physicians, pharmacists, directors of nursing, and other health care professionals is critical and essential for the betterment of our elderly patients and families. Our annual participation has provided significant opportunity to enhance knowledge and nurture mutual respect for others working in this arena.

FL-GAPNA conducted a very successful symposium in Orlando in April 2018. We encourage all nurse practitioners to become involved with both Florida Chapters of GAPNA. Visit our booth and complete an application to join GAPNA. Let us show you the benefits of belonging to an organization that prides itself in providing quality care to the older adult population. You may also visit our websites at flgapna.enpnetwork.com or fgcgapna.enpnetwork.com.

On behalf of the FLORIDA CHAPTERS OF GAPNA, we welcome you!

Sincerely,

Michelle Lewis, MSN, APRN, FNP-C, GNP-C
President, FL-GAPNA



Cultivating

A STRONG COMMUNITY OF NURSE LEADERS.

Oct. 24, 2019

Dear Colleagues,

Welcome to Best Care Practices in the Post-Acute & Long-Term Care Continuum 2019 – FMDA's 28th Annual Conference!

The National Association of Directors of Nursing (NADONA) is very proud to be involved with this wonderful conference. Planning and implementing this conference program with partners who practice together daily has been both exciting and rewarding! Membership in this hard-working Education Committee (which meets on Sunday afternoons) affords everyone the equal opportunity to submit topics, speakers, and objectives in planning the programs. Working as a cohesive team, with great leadership, allows us to provide for exceptional programming.

NADONA is once again honored to work with Ian Cordes, FMDA – The Florida Society for Post-Acute and Long-Term Care Medicine, AMDA – The Society for Post-Acute and Long-Term Care Medicine, Florida Geriatrics Society, FADONA, and the Florida Chapters of GAPNA on this remarkable program!

We can only hope that after attending this program, you will gain as much knowledge and respect for each other as we did through working with these organizations.

Enjoy the speakers, meet new friends, rekindle seasoned relationships, and recharge your batteries with all of the new and exciting ideas you gain while attending this program!

On behalf of Amanda Kistler, NADONA President, and the NADONA Board of Directors,
Most Sincerely,

Sherrie Dornberger, RN, CDP, CADDCT, GDCN, CDONA, FACDONA
NADONA Executive Director

www.nadona.org

800-222-0539



Dear FMDA Annual Program Attendees,

The Florida Geriatrics Society is honored to participate once again in the FMDA – The Florida Society for Post-Acute and Long-Term Care Medicine's 28th Annual Program. We look forward to seeing many of our FMDA friends and a large contingent of our FGS members in attendance.

We embrace the opportunity to work with FMDA and to participate in the *Best Care Practices in the Post-Acute and Long-Term Care Continuum 2019*. More than ever, collaboration between physicians, nurse practitioners, pharmacists, and all other health care professionals is critical for the betterment of our elderly patients. Healthcare providers staying organized is becoming increasingly important as healthcare is becoming increasingly consolidated.

The mission of the Florida Geriatrics Society is to improve geriatric care through interdisciplinary, professional teamwork, education and public policy, and to facilitate communication with the American Geriatrics Society. Our work with FMDA is a major step towards fulfilling that mission and we consider our relationship with FMDA to be one of our most valuable assets.

Visit our web site at www.floridageriatricssociety.org to find out more about our organization and benefits of membership. Please mark your calendar for Aug 21-22, 2020 for our annual meeting which will be held at the Marco Island Beach Resort on Marco Island (<https://floridageriatricssociety.org/fgs-annual-meeting-2020/>)

We look forward to a very successful meeting and to seeing you on Marco Island.

Sincerely,

Ronald Garry, MD, FACP, AGSF
FGS President



P. O. Box 1403
Land O Lakes, FL 34639
www.FloridaGeriatricsSociety.org
813-996-0322

Meeting & Continuing Education Information

Annual Program Description

This program is designed to provide a review and update of major geriatric diseases, illnesses, and risks found in nursing home patients, residents of assisted living facilities, those under hospice care, and seniors living at home. Topics covered this year include: ♦ Advance Directives ♦ Antimicrobial Stewardship ♦ Clinical Leadership ♦ CPT Coding in the Nursing Home ♦ Deprescribing ♦ Depression, Anxiety & Mood Disorders ♦ Falls Prevention ♦ Home Visiting Programs ♦ National Leaders Forum ♦ Opiate Withdrawal Management ♦ PDPM Overview ♦ Physicians Are Essential ♦ POLST ♦ Public Policy Spotlight ♦ Reacting to Lawsuits ♦ Red-Eye Rounds ♦ Regulatory Update ♦ Sepsis Early Recognition ♦ SNF Five-Star Quality Metrics 101 ♦ Sleep Disorders ♦ Social Determinants of Health ♦ Syncope in Long-Term Care ♦ Technology and Health Care ♦ Wound Care ♦ Plus these three Florida Mandatory Licensure Renewal Courses: Update on HIV/AIDS, Domestic Violence, and Preventing Medical Errors

Target Audience

This conference is designed to educate physicians, advanced practice nurses, senior care pharmacists, consultant pharmacists, physician assistants, directors of nursing in LTC, registered nurses, and long-term care administrators, as well as geriatricians, primary care and home care physicians, physicians considering becoming long-term care medical directors, hospice medical directors, or home care medical directors, and others with an interest in geriatrics and its continuum of care. The faculty includes national and regional authorities in the fields of medical direction, senior care pharmacology, post-acute and long-term care medicine, and geriatric medicine.

Annual Program Objectives

Upon completion of the Best Care Practices in the Post-Acute and Long-Term Continuum conference, participants should be able to:

1. Discuss the professional challenges facing medical directors, attending physicians, advanced practice nurses, consultant pharmacists, physician assistants, directors of nursing, and administrators practicing in the continuum.
2. Describe the advances in theoretical and clinical knowledge impacting individuals affected by medical issues in the PA/LTC continuum.
3. Discuss the current and emerging national issues and public policy efforts of AMDA – The Society for Post-Acute and Long-Term Care Medicine, Gerontological Advanced Practice Nurses Association, and the American Society of Consultant Pharmacists.
4. Describe examples of evidence-based practice and multidisciplinary approaches to enhance outcomes in various health care settings.
5. List examples of evidence-based practice as it pertains to post-acute and long-term care medicine.



Dual Tracking Sheets & Certificates of Attendance:

Earned hours for Florida licensees will be reported electronically to CE Broker directly. Please make sure your license information is provided exactly as issued or your hours may be rejected by CE Broker. Claim only those hours actually spent in sessions.

1. a. **Physicians:** Your dual **CME/CMD Tracking Sheet & Certificate of Attendance** is enclosed in your packet. Please complete, leave the bottom copy after your last session, and keep the white copy for your files.
- b. **Advanced Practice Nurses, Physician Assistants, and Licensed Nurses:** Your dual tracking sheet and certificate of attendance is enclosed in your packet. Please complete it in its entirety, leave the bottom copy after your last session, and keep a copy for your files.
- c. **Pharmacists:** Pharmacists received in their materials packet a ***Pharmacist Agenda*** designed specifically for use in planning and documenting their attendance at the various activities. It contains information on the ACPE contact hours and the session groupings for Florida Board of Pharmacy Consultant Pharmacist Licensure Renewal contact hours. It also includes a code the pharmacist will need to use when claiming credit online.

Pharmacists will not receive a tracking sheet or certificate of attendance from FMDA.

- d. **Nursing Home Administrators:** Administrators should complete the course evaluations and tracking sheet, which is also the certificate of attendance, and deposit them in the box at the registration counter at the end of their last day.
2. Everyone ***must sign in*** once per day. The sign-in sheets will be set up at the registration counter.
3. If your profession was not included in No. 1 above and you are seeking contact hours and a certificate of attendance, please notify the staff at the registration counter.
4. Please check your **mailing address** on the attendee list given to you at registration. Many times, the address provided is not your best mailing address for correspondence. Note any corrections/changes at the registration desk, and **please update your email address as needed at this time.**
5. **Evaluations:** We need you to return course evaluation(s) from all the sessions you attended.
6. **Trade Show:** Take every opportunity to visit each exhibitor. Their contributions and participation in the education continuum are essential if we are to succeed in reaching new goals each year.
7. **Trade Show Card:** Please drop off your completed exhibitor card before you leave the exhibit hall or at the registration counter in order to be eligible to win door prizes. The deadline is 3 p.m. on Saturday.



Continuing Education

EDUCATION COMMITTEE (2018-2019)

EDUCATION COMMITTEE CHAIR: Shark Bird, MD, CMD, CWSP

PROGRAM DIRECTOR: Angel Tafur, MD, CMD; Vice Chair, CME-Education Committee

AMDA LIAISON: Robert Kaplan, MD, FACP, CMD; Chairman of the Board, FMDA

NADONA LIAISON: Sherrie Dornberger, RNC, GDCN, CDONA, FACDONA; Executive Director, NADONA

FLORIDA CHAPTERS OF GAPNA LIAISON: Michelle Lewis, MSN, ARNP, FNP, GNP; President, FL-GAPNA

FLORIDA GERIATRICS SOCIETY LIAISON: Ron Garry, MD; President, FGS

FL-ASCP LIAISON: Rick Foley, PharmD; Immediate-Past Chair, FL Chapter – American Society of Consultant Pharmacists

NURSE PLANNER: Michelle Lewis, MSN, ARNP, FNP, GNP; President, FL-GAPNA

COMMITTEE MEMBERS: Mark L. Beauchamp, MD; Marva Edwards-Marshall, DNP, ARNP-BC; Marcia Gilkes, ARNP; Maria R. Gonzalez, MD, FAAFP, CMD; Alfonso Gonzalez-Rodriguez, MD; Elizabeth Hames, DO, CMD; Leonard Hock Jr., DO, MACOI, CMD; Robert Kaplan, MD, FACP, CMD; Bea Matthews, DNP, ARNP, GNP-BC; Simone Minto-Pennant, PharmD; Rhonda L. Randall, DO; Kenya Rivas, MD, CMD; Diane Sanders-Cepeda, DO, CMD; Laurie Sheffield, ARNP, DNS; Niharika Suchak, MBBS, MHS, FACP, AGSF; and Lauren Tafur, ARNP

EDUCATION COMMITTEE DISCLOSURES

Shark Bird, MD	Employee, Vohra Wound Physicians
Rick Foley, PharmD	Employee, CVS/Omnicare
Rhonda L. Randall, DO	Shareholder, UnitedHealth Group Employee, UnitedHealthcare
Diane Sanders-Cepeda, DO	Employee, UnitedHealthcare

Please note that in addition to being presented with disclosure information about faculty, the same disclosure information is required of all Education Committee members – our planning committee. Where there are no financial interests indicated, the faculty or planning committee member had none to report. In the spirit of full disclosure, no member of this committee is a compensated conference speaker at Best Care Practices in the Post-Acute and Long-Term Care Continuum 2019.

This annual meeting provides you with the opportunity to earn continuing education credits for the licensed professions listed here. All sessions are approved for these licensees except: None of the promotional lunch or dinner product theaters provide CE credits.

DUAL TRACKING SHEETS & CERTIFICATES OF ATTENDANCE

We prepared a comparative chart of continuing education credits allowable for each session by each of the various professions (see page 13). You will have the same dual tracking sheet and certificate of attendance for the entire conference. This process is being done on the honor-code system. If you wish to receive educational credits, you will have to report the total number of hours you attend. If you leave early, you must keep an accurate tabulation and indicate this on the tracking sheet.

Keep in mind that the tracking sheet is also the certificate of attendance for the entire conference. Be sure to complete this form accurately and turn in the appropriate copy at the registration desk along with your completed course evaluations before you leave the conference.

Additional instructions for pharmacists may be found on page 12. Pharmacists do not receive a tracking sheet/certificate of attendance.

CME ACCREDITATION for PHYSICIANS (MDs and DOs)

Accreditation Statement: This live activity has been planned and implemented in accordance with the Essential Areas and Policies of the Accreditation Council for Continuing Medical Education (ACCME) through the joint providership of AMDA – The Society for Post-Acute and Long-Term Care Medicine and FMDA – The Florida Society for Post-Acute and Long-Term Care Medicine. AMDA – The Society for Post-Acute and Long-Term Care Medicine is accredited by the ACCME to provide continuing medical education for physicians.



This live activity is approved for a maximum of **26.25 AMA PRA Category 1 Credits™**.

Physicians should claim credit commensurate with the extent of their participation in the activity.

Continuing Education



CMD Credit Statement: This live activity has been pre-approved by ABPLM for a total of **18.0*** management hours and **10.25*** clinical hours toward certification as a Certified Medical Director (CMD) in post-acute and long-term care medicine. The CMD program is administered by the American Board of Post-Acute and Long-Term Care Medicine. Each physician should claim only those hours of credit actually spent on the activity. (* Subject to change.)



The American Osteopathic Association: AOA recognizes this activity for AMA PRA Category 1 Credit™ as AOA Category 2 credit.

State of Florida Boards of Medicine: This activity has been approved by the Florida Board of Medicine and the Florida Board of Osteopathic Medicine. CE Broker Program Tracking Number **20-733830**.

American Board of Internal Medicine (ABIM): Due to unforeseen circumstances, we will not be providing ABIM MOC credits.

PHARMACIST CONTINUING EDUCATION

General Pharmacist Credit: The Association for Medication Education (AME) is accredited by the Accreditation Council for Pharmacy Education as a provider of continuing pharmacy education. This knowledge-based program has been approved for **25.25** contact hours. **Sessions 101, 102, 114, 120, and 122 are NOT approved for pharmacist CE.** Each individual session of this conference has received a separate Universal Activity Number (UAN). For details related to learning objectives, speakers, and UAN numbers for each session, go to www.bestcarepractices.org. ACPE credit is for pharmacists only.



Florida Consultant Recertification: This activity has been approved by the Florida Board of Pharmacy. CE Broker Program Tracking Number **20-740118**.

ANCC: NATIONALLY APPROVED CONTACT HOURS for ADVANCED PRACTICE NURSES & LICENSED NURSES

This continuing nursing education activity was approved by the Alabama State Nurses Association (ASNA) for a total of **31.25** contact hours of continuing education and **26.25** maximum participant hours, **Course #2-0.2256**.

ASNA is accredited as an approver of continuing nursing education by the American Nurses Credentialing Center's Commission on Accreditation.

FLORIDA CONTACT HOURS for ADVANCED PRACTICE NURSES, LICENSED NURSES, and NURSING HOME ADMINISTRATORS

This educational program has been approved for up to **31** nursing contact hours and **26.0** nursing home administrator CEUs by the Florida Association Directors of Nursing Administration/LTC (Florida Board of Nursing and Florida Board of Nursing Home Administrators CE Broker Provider ID Number 50-682). **CE Broker Program Tracking Numbers 20-733832**. This program has NOT been submitted to NAB for NHA CEUs.



FLORIDA PHYSICIAN ASSISTANTS

This program has been approved for up to **26.25** hours and accepted by Florida Board of Medicine for Florida Physician Assistants. **CE Broker Program Tracking Number 20-733830**.

Wireless Internet

UN = FMDA

PW = BCP2019

Continuing Education Credits Calculated for Tracking Sheets & Certificates of Attendance

	Session Title/No.	MD/DO/PA/CMD	ACPE	NP/RN* NHA	
Thursday	101 Update on HIV/AIDS	(1 hour)	MANAGEMENT	–	1.0 1.0
	102 Domestic Violence	(2 hours)	MANAGEMENT	–	2.0 2.0
	103 Preventing Medical Errors	(2 hours)	CLINICAL	2.0	2.0 2.0
	104 Wound Care 101: Achieving Excellence Through Best Practices	(3 hours)	MANAGEMENT	3.0	3.0 3.0
	105 Plugging Technology into Health Care to Provide High Quality Care While Also Tying in All Stakeholders Involved in the Patient's Care	(1 hour)	CLINICAL	1.0	1.0 1.0
	106 Home Visiting Programs: A Study in Return to Hospital Reduction	(1 hour)	MANAGEMENT	1.0	1.0 1.0
	107 Sleepless in Orlando	(1 hour)	MANAGEMENT	1.0	1.0 1.0
	108 Advanced Directives 2019 Update: A Humorous Guide to a Serious Topic	(1 hour)	CLINICAL	1.0	1.0 1.0
Friday	109 Keynote: State of the State	(1 hour)	MANAGEMENT	1.0	1.0 1.0
	110 Social Determinants of Health: Cohesion in Culture Change	(1 hour)	MANAGEMENT	1.0	1.0 1.0
	111 Update on Depression, Anxiety & Mood Disorders	(1 hour)	CLINICAL	1.0	1.0 1.0
	112 Public Policy Spotlight	(1 hour)	CLINICAL	1.0	1.0 1.0
	113 Update on Physician Orders for Life-Sustaining Treatments	(1 hour)	MANAGEMENT	1.0	1.0 1.0
	114 Strategies: How to React When a Lawsuit Falls on Your Lap	(1 hour)	MANAGEMENT	–	1.0 1.0
	115 Falls: What Causes Them and How Do We Prevent Them	(1 hour)	MANAGEMENT	1.0	1.0 1.0
Saturday	116 Red-Eye Rounds: PA/LTC and Geriatrics Clinical Quandaries	(1 hour)	MANAGEMENT	1.0	1.0 1.0
	117 National Leaders Forum	(1.5 hours)	MANAGEMENT	1.5	1.5 1.5
	118 Sepsis: Early Recognition & Optimizing Outcomes in LTC	(1 hour)	CLINICAL	1.0	1.0 1.0
	119 Clinical Leadership in the New Healthcare Era: Wait or Innovate?	(1 hour)	MANAGEMENT	1.0	1.0 1.0
	120 Physicians Are Essential to Post-Acute and Long-Term Care Success	(1 hour)	MANAGEMENT	–	1.0 1.0
	121 Using Data to Drive Antimicrobial Stewardship in PA/LTC Facilities	(1 hour)	CLINICAL	1.0	1.0 1.0
	122 Be a Full Code! CPT Coding in the Nursing Home	(1 hour)	CLINICAL	–	1.0 1.0
Sunday	123 The Patient Driven Payment Model (PDPM) and the Impact on Resident Centered Care	(1 hour)	MANAGEMENT	1.0	1.0 1.0
	124 Common Symptoms of Syncope: Complex Causes – A Clinician's Approach	(0.75 hour)	MANAGEMENT	.75	.75 .75
	125 AHCA Regulatory Update	(0.75 hour)	CLINICAL	.75	.75 .75
	126 Innovative Approaches to Implement Evidence Based Deprescribing Practices in PA/LTC Setting	(0.75 hour)	CLINICAL	.75	.75 .75
	127 SNF Five-Star Quality Metrics 101	(0.75 hour)	CLINICAL	.75	.75 .75
	128 Opiate Withdrawal Management	(0.75 hour)	CLINICAL	.75	.75 .75
	Total CME/CE hours approved:	31.25	31.25	25.25	31.25 31.25
	Maximum CME/CE hours to be earned:	26.25	26.25	23.25	26.25 26.25

* **Nursing contact hours approved for ANCC and FADONA (60-minute hour).**



FMDA App & Audience Response System (ARS)

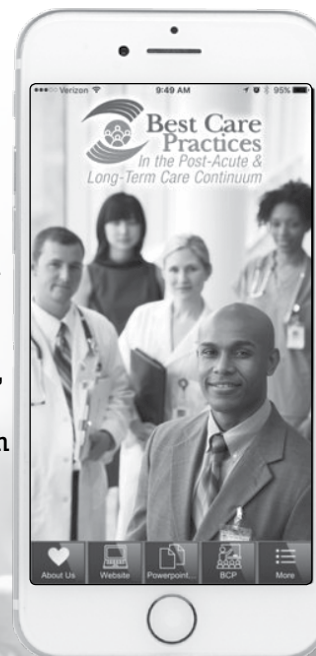
FMDA's mobile app contains many useful features that will help guide you through the conference this year, including scheduled events, handouts, audience response capabilities, social media, a comments section, and more. The app may be downloaded for free in iTunes and Android stores, and will work on tablets and smart phones. Please download the app by searching for "FMDA."

Audience Response System Instructions:

We will be using the app and audience response for a number of sessions during the conference. There are three ways you can answer questions:

- 1) The first is through the mobile app itself. The app contains a "response" tab that takes you right to the question to be answered in real time.
- 2) The second way is through a computer and a wireless internet connection, by going to **PolleEv.com/fmda**. When you visit this page, the questions will be there for you to answer in real time.
- 3) Lastly, you may text your answer. The answer will be matched up with a corresponding code, for which you must text **FMDA** to **22333** once to join, then A, B, C, D, etc. (standard text messaging rates do apply).

If you need assistance with the ARS or the app in any way, please seek out Jesse Riddle, Alex Cloke, or Jordan Fernandes.



We've Gone Social and So Should You!

Social Media Action Contest: We've gone social! Be sure to "Like" us on Facebook, "Follow" us on Twitter, and "Connect" with us on LinkedIn to stay in the know with all that transpires within FMDA!

Visit any of our social media pages and your likes and follows will enter you for a chance to win a **\$25** gift card on Friday, Saturday, and Sunday during the annual conference.



Speaker Bios

Alex Bardakh, MPP, PLC, is director of public policy and advocacy at AMDA – The Society for Post-Acute and Long-Term Care Medicine. Earlier, he spent three years at AMDA serving as the health policy analyst working on physician payment, quality, and care transitions issues. During that tenure, he developed resources on the Physician Quality Reporting Initiative and Value-Based Purchasing Program. Prior to his return to AMDA, he spent two years as the government relations and advocacy coordinator for the American Urological Association. The author of “Are We Finally Ready for Medicare-Pay Reform?” (Caring for the Ages, August 2013), he was staff project lead for two AMDA White Papers on Care Transitions.

Melissa Bray, MD, CWSP, is a Vohra wound physician with a focus on wound care in long-term care facilities. Licensed in Illinois and Indiana, Dr. Bray leads the wound care team at more than 10 facilities, treating wounds of various etiologies and complexities in the Chicagoland area. She encourages continuous learning by providing in-service lectures on aspects of wound care to facility staff. As a trainer for new Vohra physicians, Dr. Bray demonstrates her dedication to patients and wound healing.

Ariel Cole, MD, FAAFP, CMD, is director of the geriatric fellowship at AdventHealth in Winter Park, FL, where she supervises medical students, residents, and geriatric fellows in the care of elderly patients in the hospital, outpatient clinics, nursing homes, and home visits. She oversees a Comprehensive Geriatric Assessment Clinic within the Centre for Aging and Wellness, where patients and their caregivers meet with an interdisciplinary team to evaluate their medical, functional, and psychosocial status. The Orlando campus clerkship director for geriatrics at the Florida State University College of Medicine, Dr. Cole is a member of the American Academy of Family Physicians, American Geriatrics Society, and American Medical Directors Association.

Loni Collard, RN, RAC-CT, DNS-CT, is corporate director of clinical reimbursement at Greystone Healthcare Management in Tampa. She has more than 20 years of clinical reimbursement experience and a comprehensive understanding of the MDS tool as it relates to reimbursement. With expertise in the RAI, Medicare regulation and reimbursement strategy, quality measure analysis, and management strategy, she directs and oversees regional consultants in procedures that establish accuracy and compliance with the MDS and care planning process. She works with her corporate leadership to develop and implement integrative strategies for clinical assessment, reimbursement, and risk management to ensure regulatory and reimbursement compliance as optimal clinical and financial outcomes.

Deborah Dunn, EdD, is dean of Madonna University’s Graduate School, interim dean of the School of Business, director of the Center for Research, and full professor. Prior to her appointment as dean in 2013, Dunn served in Madonna’s College of Nursing and Health as director of the Nurse Practitioner Program, and nursing faculty member for more than 20 years in the Nurse Practitioner, Doctor of Nursing Practice, and BSN programs. She led the revision of the nurse practitioner curriculum to adult-gerontology and developed a dual track in advanced hospice and palliative care. Dunn serves on the Gerontological Advanced Practice Nurses Association (GAPNA) Board of Directors as president, board liaison to the Historical Committee, and Cross-Cultural SIG and Certification Task Force. Prior national positions include director-at-large, chair of GAPNA Writer’s Group for the Consensus Statement on the APRN Gerontological Specialist; GAPNA Newsletter editor; Chapter President’s Committee; and Research and Education committees. She is a past-recipient of GAPNA’s Excellence in Education Award and has been active in the GAPNA Great Lakes Chapter since 1999, where she has served in several positions, including chapter president. She presently serves on the chapter’s nurse practitioner Mentorship Night and Annual Conference Planning committees. A recipient of the GLC-GAPNA Award for Excellence in Leadership in 2014, she serves on the Board of Directors for Angela Hospice, Livonia, MI. In 2004, she received the American Association of Colleges of Nursing graduate education End-of-Life Nursing Education Consortium Award in recognition of her curriculum work in end-of-life-graduate nursing education. She has authored several publications on care of the elderly, leadership, and nursing education.

Marva Edwards-Marshall, DNP, ARNP-BC, is director of clinical operations at OptumCare Texas. Prior to that, she was a nurse practitioner at Health Management Associates in Melbourne, FL, specializing in geriatrics, and assistant professor of nursing at Brevard Community College, Palm Bay, FL, in the Associate Degree Nursing Program. A member of Space Coast Clinicians, Florida Geriatric Advanced Practice Nurses Association, and National League of Nurses, she serves on the board of directors of FMDA – The Florida Society for Post-Acute and Long-Term Care Medicine. She is actively involved in community health education and has conducted health fairs, health screenings, and health education at local churches and community centers, as well as internationally in Tobago, Carriacou, and Belize.

Rick Foley, PharmD, CGP, BCPP, is a consultant pharmacist at CVS/Omnicare with more than 25 years of experience in the post-acute long-term care market. A fellow of the American Society of Consultant Pharmacists, he is on the board of directors of FMDA – The Florida Society for Post-Acute and Long-Term Care, a member of its CME Committee, and co-chair of its Florida Quality Advocacy Coalition, where the most recent initiative is to reduce avoidable rehospitalization and management of sepsis. He was a clinical professor of geriatrics at the University of Florida College of Pharmacy for eight years and is the current professor for the Initial Certification Course for Consultant Pharmacists. Dr. Foley was appointed by then-Gov. Rick Scott to the Florida Medicaid Pharmacy and Therapeutics Committee for three terms. He serves on the Florida Healthcare Association taskforce to address opioid diversion, the FSU/USF Geriatric Workforce to address the opioid epidemic, and most recently AMDA to advise the Centers for Medicare & Medicaid Services on upcoming changes to the interpretative guidelines related to mental illness and substance abuse in nursing homes.

Ronald T. Garry, MD, FACP, AGSF, is president of the Florida Geriatrics Society, subsection chief of geriatrics at Naples Community Hospital, president of Naples Premier Concierge, and assistant professor at Florida Central University. A member of the American Geriatrics Society, Alzheimer's Support Network, and geriatric delegate to the Florida Medical Association, he was appointed by then-Gov. Jeb Bush as an expert to the Agency for Health Care Administration. He has lectured nationally on such diverse topics as elderly scuba divers, principles of geriatrics, acute care of the hospitalized elderly, and restraint reduction, among others.

Melissa L. Green, RN, MSHA, RAC-C, is chief clinical officer and corporate compliance officer of Trio Healthcare, a company she cofounded with two partners in 2016. She has worked for multistate providers with more than 200 skilled nursing centers, as well as smaller regional companies. Most recently, she served as senior vice president of clinical operations for Reliant Senior Care. From September 2011 to November 2015, she was senior vice president of clinical operations and corporate compliance officer for AdCare Health Systems, which operated 38 skilled nursing facilities and eight assisted living centers in nine states. Her professional experience also includes senior clinical leadership experiences at Sava Senior Care, Sunbridge HealthCare, and Consulate Management. A member of multiple professional associations, she was appointed to a two-year term with the Survey and Regulatory CMS Committee. She is a member of the Health Care Compliance Association and the Nurse Executive Council. Her numerous awards include 2014 Top Ranked U.S. Executives and 2019 Top Chief Clinical Officer by the International Association of Top Professionals.

Dr. Leonard Hock Jr., DO, MACOI, CMD, HMDC, FAAHPM, joined TrustBridge as chief medical officer of Harbor Palliative Care and Advanced Illness Management following more than 20 years as president of an internal medicine practice dedicated to the care of frail elderly, specialized geriatric care, and hospice and palliative medicine. He is currently with VITAS Healthcare in Orlando. He developed a palliative case management model for acute care hospitals that has proven to be successful in decreasing the length of stay and acute care costs, while increasing comfort measures for the end-of-life patient and support to family members. A member of the American Academy of Hospice/Palliative Medicine, he is a past-president of FMDA – The Florida Society for Post-Acute and Long-Term Care Medicine and chairs the Hospice Section and POLST Workgroup.

Pradipkumar Jamnadas, MD, MBBS, FACC, FSCAI, FCCP, FACP, has sustained a successful specialty practice in Orlando since 1990. A consultant cardiologist with a large diversified inpatient and outpatient practice, he has been recognized in *Orlando Magazine* as Top Doctor in Cardiology for multiple years. Additionally, he is a clinical assistant professor of medicine at Florida State University and University of Central Florida. A renowned lecturer and teacher, he is founder and chair of The Galen Foundation, a nonprofit educational organization that supports free public lectures on health- and nutrition-related topics.

Eric S. Kane, Esq., has been practicing law for 15 years in the areas of estate planning, probate, and trust administration. Recognized by Super Lawyers-Rising Stars, Top Rated Estate Planning and Probate Attorney, South-Florida; The National Advocates Top 100 Lawyers, Wills, Trusts, and Estates, Florida; and the American College of Trust and Estate Counsel Florida Fellow, he has a perfect 10.0 from attorney rating and referral service AVVO. In 2018, he received an award in appreciation for his service to the University of Miami Planned Giving Board. Mr. Kane has been appointed as a special magistrate, receiver, and guardian / attorney / administrator ad litem in the Eleventh Judicial Circuit Court Civil Division in and for Miami-Dade County. A frequent lecturer on the topics of probate administration, estate planning, and charitable planning, he authored “What Every Estate Planning Attorney Should Know About Florida Homestead Law” (Wealth Counsel’s Quarterly, October 2009).

Paul Katz, MD, is professor and chair of the Department of Geriatrics at Florida State University College of Medicine. Earlier, he was vice president of medical services at the Baycrest Health Centre and professor of medicine at the University of Toronto. He previously served as chief of the Division of Geriatrics / Aging at the University of Rochester School of Medicine and for 16 years was medical director at Monroe Community Hospital, Rochester, NY. He also spent five years as chief of staff for research at the Canandaigua Veterans Administration Medical Center as well as medical director of the Home-Based Primary Care Program at the Rochester VA Clinic. A past-president of AMDA – The Society for Post-Acute and Long-Term Care Medicine, he has co-led a committee that formulated 26 core competencies of the nursing home physician. Dr. Katz has received grants from the National Institutes of Health, U.S. Veterans Administration, Health Resources and Service Administration, and Ontario Ministry of Health and Long-Term Care. He has led studies outlining demographic characteristics of nursing home physicians and their practice patterns, using the results to define links between nursing home medical staff organization and quality outcomes. The current project director of a \$3 million federally funded grant that focuses on the training of the geriatric workforce and family caregivers, Dr. Katz is an active member of the Senior Quality Leap Initiative (SQLI), a consortium of 13 Canadian and U.S. senior care organizations dedicated to quality improvement in nursing homes. Through the SQLI, he has helped develop and implement several large-scale initiatives that have positively impacted the health and safety of nursing home residents.

Harry Krulewitch, MD, MPH, is an assistant professor of family medicine at Oregon Health and Sciences University. He teaches geriatrics, precepts family practice residents, and is the seminar leader in the intensive longitudinal course for chronic disease management, polypharmacy, and palliative and end-of-life care. Practicing geriatrics in Portland since 1993, he also worked at the first national PACE replication site for nine years. Since then, he has been in private practice caring for older adults in community-based long-term care settings, including a primary care clinic setting, SNF, post-acute care, ICF, memory units, RCF, and assisted-living settings. He also serves as an SNF, ICF, and hospice medical director and is on the CMS Oregon partnership to Improve Dementia Care, where he helped write and disseminate a statewide toolkit for palliative care to community-based facilities.

David LeVine, MD, CMD, has been medical director at Menorah Manor in St. Petersburg, FL, for 26 years and is the current chief medical officer. In addition, he is medical director of Arden Courts of Largo and geriatric clinical preceptor for three residency programs in St. Petersburg. He served as clinical associate professor of Kansas City University of Medicine and Biosciences College of Osteopathic Medicine and is an adjunct clinical professor at Lake Erie College of Osteopathic Medicine. He served on the board of FMDA – The Florida Society for Post-Acute and Long-Term Care Medicine from 2011 to 2013, and was named Medical Director of the Year by AMDA – The Society for Post-Acute and Long-Term Care Medicine in 2016.

Dheeraj Mahajan, MD, MBA, MPH, FACP, CMD, CIC, CHCQM, is president and CEO of Chicago Internal Medicine Practice and Research and leads its affiliated group of companies. The clinical associate professor of medicine at the University of Illinois at Chicago, he is also attending physician in the Loyola University affiliated geriatrics fellowship program at Hines VA hospital. He is a nationally recognized subject matter expert and speaker on physician payment models, clinical documentation improvement, denial management, quality measurement in post-acute and long-term care, and transitional care quality improvement. His areas of interest in research include antimicrobial stewardship, quality measures, health information exchange, and interoperability.

Chris Masterson, RN, LNHA, WCC, is an experienced and successful healthcare clinician / operator with more than 25 years of experience driving positive outcomes as seen through superior CMS Five-Star ratings, TJC accreditations, and successful survey outcomes. He has partnered with Vohra Wound Physicians as the chief nursing officer. A registered nurse and licensed nursing home administrator, he is wound care certified by the National Alliance of Wound Care and Ostomy. He has worked the majority of his career within the skilled post-acute nursing space in the capacity of corporate director of MDS / utilization review, senior vice president of clinical operations and innovation. His passion is helping providers with innovative ways of creating workflow efficiencies that develop into amazing outcomes. As co-principal investigator with USF and Purdue University, his work has been awarded numerous grants for continued study in the cost-effectiveness analysis of consistent staffing assignments in nursing homes, as well as disaster preparedness.

Mary Mayhew was appointed by Gov. Ron DeSantis as secretary of the Agency for Health Care Administration in January 2019. In that position, she administers Florida's \$28 billion dollar Medicaid program, which serves close to 4 million recipients each month and is responsible for paying for more than 60 percent of the births in the state. Her oversight extends to the licensure and regulation of more than 50,000 health care facilities across the third largest state in the nation, as well as promoting the transparency of consumer health care information through the agency's Florida Center for Health Information and Transparency. Previously, she served in then-Gov. Paul LePage's administration as commissioner of the Department of Health and Human Services for the State of Maine, where she implemented innovative reforms in the state's Medicaid program focused on improved care coordination and data-informed healthcare decision making. Her agency also invested in primary care and innovative care models designed to improve the management of chronic diseases, integrate behavioral and physical health, and reduce inappropriate use of healthcare services. Most recently, she served as deputy administrator and director of Medicaid and the Children's Health Insurance Program for the Centers for Medicare and Medicaid Services.

Lisa Morris, RPh, BCGP, FASCP, is regional pharmacy resource at Ensign Services in Houston. Earlier, she was senior consultant pharmacist at LLW Consulting in Sugar Land, TX, consultant pharmacist at Advanced Healthcare Solutions in Arlington, TX, and lead clinical pharmacist at Houston Hospice Inpatient Unit. She is president of the American Society of Consultant Pharmacists.

David A. Nace, MD, MPH, CMD, is an associate professor of medicine in the University of Pittsburgh's Division of Geriatric Medicine. The director of the Long-Term Care and Influenza Programs for the division and chief of medical affairs for UPMC Senior Communities, Dr. Nace is chair of AMDA's Public Policy Committee and president-elect. In addition, he is Associate Editor, JAMDA; sits on the Editorial Board of Innovations in Aging; and is a member of CMS' LTC Infection Control Licensure Regulations Drafting Panel.

Krishan Nagda, MD, founded Central Florida Inpatient Medicine (CFIM) in 2001; the practice has grown to more than 135 providers in an integrated health delivery network. His engineering background has allowed him to contribute greatly to CFIM's technological advances; the group's comprehensive communication tool was founded on his basic principle that communication is key to efficient and high-quality patient care. He focuses

on building strong relationships with ACOs, Medicare Advantage Plans, and their associated IPA / MSOs in the central Florida market. Implementation of thorough communication processes allowing for optimal transition of patient care between the hospital, skilled nursing, and primary care offices has reduced re-admissions to less than 10 percent. Dr. Nagda also co-founded and served as chief medical officer for Medicare Advantage Health Plan. Currently, he is CEO of Spectrum Medical Partners, leading providers of acute and post-acute services in the southeast U.S.

Victoria “Vycki” Nalls, GNP-BC, CWS, ACHPN, is director of education for Capital Caring Health, a nonprofit providing hospice, palliative care, and home-based geriatric primary care to the communities of southern Maryland and Virginia. She is currently attending University of Maryland School of Nursing to obtain her PhD, with a research focus in behavioral and psychological symptoms of dementia. She has presented at state and national conferences and is an active member of AMDA – The Society for Post-Acute and Long-Term Care Medicine, where she participates on the Clinical Practice Committee, Annual Conference Program Committee, and NP/PA Advisory Council. She supports her own state chapter, Mid-Atlantic Medical Directors Association, as a member of the board of directors and Education Committee.

Arif Nazir, MD, joined Signature HealthCARE in January 2016 as chief medical officer and president of SHC Medical Partners. As a practicing post-acute care geriatrician for more than 15 years, he recognized the frontline barriers to high-quality care coordination and focused his research and leadership roles on finding practical solutions. Among his many contributions to care-delivery models in this setting, his leadership for the Center for Medicare & Medicaid Services Innovations project OPTIMISTIC is most notable. This initiative utilized trained practitioner teams and evidence-based principles for proactive care delivery and care navigation to provide the highest-quality outcomes and resulted in improving care for thousands of patients in Indiana. In February 2019 Dr. Nazir became president of AMDA – Society of Post-Acute and Long-Term Care Medicine and continues to serve as founding member of its Innovation Council. He has received many professional awards, most notably the Louisville Business First’s 20 People to Know: Healthcare Award in 2018; Chief Innovator Award from Indiana Medical Directors Association in 2018; and Indiana Hulman Health Achievement Award for Public Health in 2015. Dr. Nazir has published his research in several peer-reviewed journals and frequently presents at regional and national platforms on geriatric care issues.

Gabriel Nuriel, DO, is chief executive officer, chief medical officer, and founder of Primary Care of Central Florida and Home Physicians Group. Since 2011, he served as medical director of six Florida skilled nursing facilities and two hospice providers, as well as medical director of the Orlando office of Health Care Center for the Homeless from 2003 to 2005. He is a volunteer medical director of the Prestige Clinic and member of Florida Osteopathic Medical Association, American Osteopathic Association, American Osteopathic Board of Family Physicians, AMDA – The Society for Post-Acute and Long-Term Care Medicine, and FMDA.

Alan W. Obringer, RPh, CGP, is president of Guardian Pharmacy of Orlando. Since 2014, he has been assistant professor in the Department of Pharmacotherapeutics and Clinical Research at the University of South Florida, and clinical assistant professor at the University of Florida since 2002. As president of Envision Health Consulting since 2000, he expanded pharmacy staffing and consulting business to service assisted living and long-term care facilities, and is a licensed consultant pharmacist for several ALFs and SNFs. A member of the Florida chapter of the American Society of Consultant Pharmacists, American Pharmacist Association, Florida Pharmacy Association, and American Society of Consultant Pharmacists, he is a frequent presenter on subjects pertaining to PA/LTC.

Joseph G. Ouslander, MD, is professor and senior associate dean for geriatric programs and chair of the Department of Integrated Medical Science at the Charles E. Schmidt College of Medicine at Florida Atlantic University. An internationally recognized geriatrician, he is past-president of the American Geriatrics Society and executive editor of Journal of the American Geriatrics Society. He serves on the Centers for Medicare and Medicaid Services (CMS) Nursing Home Five-Star Technical Expert Panel and Technical Expert Panel, Quality Measures for Nursing Homes.

He has an advisory role with the VA Undersecretary of Health's Geriatrics and Gerontology Advisory Committee, and is a member of both the Board of Directors of the American Geriatrics Society Foundation for Health in Aging and AMDA's Foundation.

Naushira Pandya, MD, CMD, FACP, is professor and chair of the Department of Geriatrics at Nova Southeastern College of Osteopathic Medicine and director of the Geriatrics Education Center and Geriatrics Medicine Clinic. Past-president of AMDA – The Society for Post-Acute and Long-Term Care Medicine, past-chair of the Clinical Practice Committee, member of the Clinical Practice Steering Committee, and treasurer of the Broward County Area Agency on Aging, she chaired the AMDA clinical practice guidelines (CPG) on Diabetes Management and co-chaired the Osteoporosis and Fracture Prevention CPG. A national and international speaker on management of diabetes in the elderly, she also holds the distinction of being a Fulbright Senior Specialist Scholar in Geriatrics in Slovakia in 2009.

Melissa Alvarez Perez, MD, practiced at the Cleveland Clinic before working as a locum tenens physician and traveling all over the United States. Relocating to Florida, she worked at the University of Florida Non-Surgical Spine Department treating chronic pain patients. After completing a fellowship in interventional pain management, she joined Central Florida Pain Management, where she uses a multi-disciplinary approach in the treatment of her patients. A former associate professor at the University of Florida, Orthopedics Departments, she is certified by the American Board of Physical Medicine and Rehabilitation, Spinal Cord Injury Medicine Subspecialty, Brain Injury Medicine Subspecialty, and American Board of Addiction Medicine.

Rhonda L. Randall, DO, is the chief medical officer of UnitedHealthcare Employer & Individual, the nation's largest business serving the health coverage and well-being needs of nearly 28 million Americans. Additionally, Dr. Randall supports the clinical strategy for UnitedHealth Group through her work in the corporate office of Medical Affairs and as a senior medical advisor to the UnitedHealth Foundation. Since 2003, she has held clinical leadership roles in many of the enterprise's businesses, including: care delivery, Medicaid Long-Term Care, Medicare Special Needs Plans, and Medicare Supplement. Following the 2003 passage of the Medicare Modernization Act that created the Part D prescription drug program, Dr. Randall was instrumental in developing UnitedHealthcare's first Part D plans. In 2008, she transitioned to UnitedHealthcare Medicare & Retirement, serving as regional chief medical officer for the northeast, later concurrently as vice president and national medical director of medical management, as well as deputy chief medical officer of Evercare Hospice and Palliative Care. From 2010 to 2013 she served as chief medical officer for Medicare & Retirement and then as chief medical officer for UHC's Retiree Solutions and National Accounts. She has served as volunteer clinical faculty in geriatrics for Florida Hospital's Residency program and Florida State University College of Medicine. Dr. Randall is a two-time recipient of UnitedHealthcare's Innovation Awards, first in 2005 for her leadership in disaster planning, and again in 2006 for her contribution to a clinical workgroup that developed a model of care for people with advanced illness and end-of-life needs. She has worked with policymakers to expand long-term care home- and community-based services and has collaborated with state agencies to update regulations so seniors who are eligible for both Medicare and Medicaid can receive hospice services from the comfort of their homes. A member of the Florida Coalition on Physicians Orders for Life-Sustaining Treatment as well as the national Coalition to Transform Advanced Care, Dr. Randall serves as president of FMDA – The Florida Society for Post-Acute and Long-Term Care Medicine; she is a member of the house of delegates as well as the Nominating Committee for AMDA – The Society for Post-Acute and Long-Term Care Medicine.

Bernardo Reyes, MD, CMD, designed and implemented the first geriatric co-managed orthopedic service between Massachusetts General Hospital and the Harvard Orthopedic Trauma Program, which later became the Charlotte Bloomberg Fellow in Geriatric Medicine at Harvard Medical School. He joined the staff of Cleveland Clinic Florida, where he worked in the Geriatric Medicine Unit in the areas of primary and post-acute care; after transitioning to Florida Atlantic University, he has been instrumental in building a geriatric clinical practice across care settings while developing a research portfolio focused on safe transitions of care for at-risk older adults and identification of sepsis in nursing homes. Under the mentorship of internationally recognized figures in the area, he has completed several quality improvement programs aimed to reduce care fragmentation and risk of unintended harm, and assisted in the implementation of such programs into an electronic medical records system used in nursing facilities across the country. Dr. Reyes' scholarly activity includes seven chapters in

textbooks; editorials; and letters to the editor in journals; he has co-authored 19 original peer-reviewed research publications and hundreds of posters and oral presentations in national and international venues.

Cathy Robinson-Pickett is an internationally recognized motivational and inspirational educator. Named a National Point of Light by President George Bush, she has been noted for her work in HIV, domestic violence, victims' rights, sexual responsibility, and patient advocacy. Her legislative activism on local, state, and federal levels began in 1992; initially focused on victims' rights in assault cases, it has evolved into work around HIV testing for pregnant women and the availability of comprehensive reproductive health education for school-aged young adults. She is the founder and executive director of Friends-Together, an NGO that works with families infected and affected by HIV / AIDS in the United States and Tanzania. Since 2008 she has worked extensively in the area of smoking cessation and prevention, both directly with small groups and teaching professionals techniques to work with their patients and clients.

Pamela Scarborough, PT, DPT, MS, CWS, CEEAA, is director of public policy and education for American Medical Technologies. Her clinical career spans more than 35 years, having practiced in a variety of settings including acute, outpatient, home health, and long-term care; her experience includes traditional physical therapy, orthopedics and sports medicine, cardiac rehabilitation, and wound management. She has published book chapters, articles, and monographs on the topics of diabetes and wound care, and presented to interdisciplinary audiences at conferences, webinars, and wound management educational activities. She is the founding director of the Wound Certification Prep Course, a nationally recognized program to assist in preparing clinicians and industry partners for their wound-board certification. She has served on numerous symposium planning panels and association boards, including the board of the Association for Advanced Wound Care and as an affiliate member of the National Pressure Ulcer Advisory Panel. She served as the clinical editor for Wound Source and is on the editorial board of Today's Wound Clinic. She trains healthcare providers in wound prevention and management with a focus on the long-term care setting.

Kimberly R. Smoak has been with the Agency for Health Care Administration since 1995. The bureau chief of field operations in the Division of Health Quality Assurance, she is responsible for ensuring federal and state survey work is completed on time, monitoring quality improvement / quality assurance activity, and training survey and other division staff. She oversees the eight field offices, the complaint administration unit, and the survey and certification branch within the division. She is also the state survey agency director for the State of Florida. A Qualified Intellectual Disability Professional, in 2009 and 2017 she received Survey & Certification Achievement Awards presented by the Centers for Medicare & Medicaid Services for her work in survey and certification.

Greg Sullivan, MD, is a staff psychiatrist providing inpatient consultation-liaison services within the medical, surgical, and rehabilitative units of the James A. Haley VA Hospital in Tampa. An assistant professor of psychiatry at the University of South Florida with faculty positions in the general, addiction, and forensic psychiatry programs, he serves as program director for the geriatric psychiatry fellowship.

Michael Wasserman, MD, served as chief executive officer for Rockport Healthcare Services, overseeing the largest nursing home chain in California. Previously, he was executive director, care continuum, for Health Services Advisory Group, the QIN-QIO for California. In 2001 he co-founded Senior Care of Colorado, which became the largest privately owned primary care geriatric practice in the country, before selling it to IPC in 2010. His book, *The Business of Geriatrics*, details how to succeed in geriatrics in today's healthcare marketplace. As president and chief medical officer for GeriMed of America, Denver, he helped develop GeriMed's Clinical Glidepaths. Dr. Wasserman spent five years with Kaiser-Permanente in Southern California, where he developed Kaiser's first outpatient Geriatric Consult Clinic. He was a co-founder and owner of Common Sense Medical Management, which helped manage high-risk beneficiaries of Cover Colorado. A past-chair of the American Geriatrics Society's (AGS) Managed Care Task Force, he has served on the Public Policy Committee for AGS and AMDA. He was a public commissioner for the Continuing Care Accreditation Commission, and recently served on several CMS Technical Expert Panels related to MACRA, Value Based Purchasing, and the IMPACT Act. Dr. Wasserman was a co-founder of MESA (Medicare Experts and Senior Access), a multiyear grant from

the Colorado Health Foundation to train primary care physicians to effectively care and bill for Medicare patients. He was the lead delegate from the State of Colorado to the 2005 White House Conference on Aging, and he co-chaired the Colorado Alzheimer's Coordinating Council. An active supporter and board member of the Wish of a Lifetime Foundation, he served on the board of The Denver Hospice for 15 years. He is a board member for the American Geriatrics Society's Foundation for Health in Aging, and president of the California Association for Long Term Care Medicine. He has spoken extensively and published on topics involving geriatrics, quality improvement, geriatric workforce issues, healthy aging, Alzheimer's Disease, the business of health care, leadership, practice management, and managed care.

Robert A. Zorowitz, MD, MBA, CMD, is senior medical director at Optum CarePlus in New York, NY. Prior to that, he provided medical direction to nursing facilities ranging in size from 40 to 800 beds. For the past 15 years, he has been the representative and advisor for the American Geriatrics Society to the American Medical Association CPT Editorial Panel, where he has worked with professional specialty organizations to develop CPT codes that describe the services provided by clinicians to the geriatric population and in the post-acute and long-term care setting. He is a member of AMDA – The Society for Post-Acute and Long-Term Care Medicine and its Program Planning and Finance committees.

Elizabeth Zwibel has been a trial lawyer for more than 31 years, bringing with her a wealth of experience and passion for defending the rights of the seriously injured and underinsured. Prior to joining Swope, Rodante, she led a solo practice firm and built an impressive record co-counseling with firms throughout Florida to obtain multimillion dollar verdicts and settlements, including one of the largest mild traumatic brain injury verdicts in U.S. history. A member of National Trial Lawyers, she has been inducted into the Florida Verdicts Hall of Fame by the Daily Business Review. She is a frequent lecturer nationwide on catastrophic complex litigation, traumatic brain injury, and product liability.

Faculty Disclosures

Melissa Bray, MD	Employee, Vohra Wound Physicians
Rick Foley, PharmD	Employee, CVS/Omnicare
Dheeraj Mahajan, MD	Employee, Matrix Care
Chris Masterson, RN, LNHA	Consultant, Vohra Wound Physicians
Lisa Morris, RPh	Employee, Ensign Services
Arif Nazir, MD	Shareholder, Care Ascend Employee, Signature Healthcare
Joseph Ouslander, MD	Grant/Research Support, PointClickCare Medical Advisor, Pathway Health
Naushira Pandya MD	Speakers Bureau, Lilly
Rhonda L. Randall, DO	Shareholder, UnitedHealth Group Employee, UnitedHealthcare
Bernardo Reyes, MD	Grant/Research Support, PointClickCare
Pamela Scarborough, DPT	Employee, American Medical Technologies
Michael Wasserman, MD	Consultant, Loren Consulting Honoraria, Merck Manual Editorial Board

Call for Presentations

The CME/Education Committee for Best Care Practices in the Geriatrics Continuum 2019 invites you to submit speaker presentation proposals and abstracts for the 2020 annual conference. The meeting will be held Oct. 22-25, 2020, at Loews Sapphire Falls Resort at Universal Orlando.

— Submission Site Opens: Nov. 13, 2019
— Speaker Presentation Submission Deadline: Feb. 1, 2020

See page 39 for additional information or contact the FMDA business office at (561) 689-6321.

Helpful Reminders

The **tracking sheet** is also your certificate of attendance for the entire conference. Be sure to complete these forms and turn in the appropriate copies to the registration desk along with your completed course evaluations (and scan card, as needed) — before you leave the conference.

Everyone must **sign in** once per day. The sign-in sheets will be set up at the registration counter.

Please check your **mailing address** on the attendee list given to you at registration. Many times, the address provided is not your best mailing address for correspondence. Note any corrections/changes at the registration desk, and please include your email address at this time.

Evaluations: It is critical that you complete and return course evaluation(s) from all the sessions you attended.

We strive to make this a superior meeting experience for all our participants and we hope you enjoyed yourself. It is our wish that you found this conference educational, friendly, and thought-provoking.

Thanks so much for being part of the success of this conference.

The Optum care model



Impact in **your facility**

Elevates quality while reducing costs

Improves census stability

Financial benefits include quality incentives

Care on site reduces ER and hospital visits

Provides an added layer of care for long-term residents in participating health plans.



Let's talk about a partnership in care.
Call us at **1-877-800-1665**.



optum.com/LongTermCare



UnitedHealthcare®



OPTUM®

86785-092019



How Soon Can Hospice Begin for Eligible Patients?

When do you need us?
VITAS is available 24/7/365.

Download our referral app,
visit VITAS.com or call 888.VITAS.80
for always-available hospice care.



VITAS®
Healthcare
SINCE 1980



THE FLORIDA SOCIETY
FOR POST-ACUTE AND
LONG-TERM
CARE MEDICINE

Best Care Practices in the Post-Acute and Long-Term Care Continuum 2019
Jointly Provided by FMDA & AMDA



**Best Care
Practices**
In the Post-Acute &
Long-Term Care Continuum



Chinese Auction & Traditional Silent Auction Program

Friday and Saturday, Oct. 25-26, 2019
During Trade Show Hours in the Exhibit Hall

Chinese Auction – Purchase a ticket (\$10) and place into the box in front of the auction item you would like to win!

One (1) Ticket = \$10, or three (3) for \$20

BONUS: Receive an additional (1) ticket for each bid you place in the Silent Auction. The Chinese Auction will have 6-7 items, and both auctions will close on Saturday at 11:50 a.m.

The Silent Auction Features: Sports & Entertainment Memorabilia, Jewelry, Watches, Sunglasses, Gifts and more. Auctions by Design will keep track of each bonus ticket awarded for your Silent Auction bid.

HOW IT WORKS!

In front of each auction item is a designated basket to hold the tickets for each auction item. During the auction, participants purchase sheets of tickets and each ticket is used as a bid for a chance to win the items of their choosing. They place however many tickets they would like in the baskets that correspond with the prizes they would like to try to win. This is fun for participants because they have a lot of choice in how they can spend their tickets. Participants may increase their chance of winning by bidding more tickets on one specific item. If someone really wants to win one particular prize, they might put most or all of their tickets in that lot to try to win that prize, or they could spread their tickets out among all of the auction items.

At the conclusion of bidding, a raffle is held to draw the winners. One winning ticket is drawn for each auction item. The more tickets a person deposits into each basket, the higher their chance will be to win the item. Participants who bought a lot of tickets and bid on several items might win many times.

SILENT AUCTION SUPPORTS SCHOLARSHIPS

FMDA takes an active role in outreach efforts to residents, interns, fellows, and young-career physicians with an interest in PA/LTC. Through its Careers in Long-Term Care Awards, it has sought to encourage, nurture, and mentor these medical professionals, as well as advanced practice nurse, pharmacist, and PA/LTC administrator students. Please support our efforts by buying auction tickets and bidding often. All proceeds will benefit FMDA's Careers in Long-Term Care Awards and AMDA's Futures Program.

Thank You!

We wish to thank Sunovion Pharmaceuticals for hosting non-CME/CPE/CE/CEU sessions during our annual program:

Friday, Oct. 25 • 12-1 p.m. • Grand Caribbean 10-12

PRODUCT THEATER LUNCHEON

*A LAMA Administered via Natural Breathing
for the Treatment of COPD*

— Sponsored by **Sunovion Pharmaceuticals**

.....

Saturday, Oct. 26 • 1-2 p.m. • Grand Caribbean 10-12

PRODUCT THEATER LUNCHEON

*A Look at Seizures in Long-Term Care:
Highlighting a Treatment Option for Partial-Onset Seizures*

— Sponsored by **Sunovion Pharmaceuticals**

Thank You!

We wish to thank the following organizations for their support:

Bronze Grande Sponsors



OPTUM®

VITAS®
Healthcare
SINCE 1980



CONSULATE HEALTH CARE – President's Wine & Cheese Reception



OPTUM® – Friday's Welcome Reception in Exhibit Hall



– Tote Bags

UNITED APOLLO INTERNATIONAL INC.
GLOBAL HEALTH CARE SOLUTIONS

VITAS®
Healthcare
SINCE 1980

– Saturday's Continental Breakfast in Exhibit Hall



UnitedHealthcare® – FMDA Mobile App Annual Sponsorship



OPTUM® – Poster Sessions



October 24-27, 2019

**Best Care
Practices**
*In the Post-Acute &
Long-Term Care Continuum*



Program

**Loews Sapphire Falls Resort
at Universal Orlando**

1

Schedule of Events

Thursday, Oct. 24, 2019

THURSDAY, OCT. 24

OPTIONAL PRE-CONFERENCE WORKSHOPS

7:30 a.m.-6:30 p.m. Registration & Information

Grand Caribbean Registration

Florida Mandatory Licensure Renewal Courses

Instructor for Sessions 101, 102, 103:

◀ Cathy Robinson-Pickett, BS;
Certified Train the Trainer Instructor for
HIV/AIDS; Certified Domestic Violence
Instructor; and Founder, Friends-Together

Introductions:

◀ Angel Tafur, MD, CMD; Vice Chair,
Education Committee; Program
Director; President-Elect, FMDA



Cathy Robinson-Pickett

8-9 a.m. Grand Caribbean 11-12

➤ **101** Update on HIV/AIDS
(1 hour)

9:05-11:05 a.m. Grand Caribbean 11-12

➤ **102** Domestic Violence
(2 hours)

11:10 a.m.-1:10 p.m. Grand Caribbean 11-12

➤ **103** Preventing Medical Errors
(2 hours)

1:10-2 p.m. Lunch on Your Own

Conference Photography

Workshops, sessions, and other FMDA and BCP events are considered to be public events. Photographs taken by photographers at the event may be used by FMDA for promotional purposes. As a registered participant or exhibitor in these events, you agree that your photograph, if taken, may be used in this manner and you waive any claim to compensation.

2:05-5:05 p.m.

Grand Caribbean 11-12

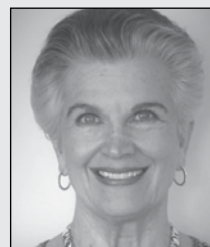
➤ **104** Wound Care 101: Achieving
Excellence Through Best Practices
(3 hours)



Melissa M. Bray



Victoria A. Nalls



Pamela Scarborough

◀ Melissa M. Bray, MD; Vohra Wound Physicians Fellow

◀ Victoria A. Nalls, GNP-BC, CWS, ACHPN; Director of
Education, Capital Caring; Member, AMDA's Clinical
Practice Committee and NP/PA Advisory Council

◀ Pamela Scarborough, PT, DPT, MS, CWS; Director
of Public Relations and Education, American Medical
Technologies

Moderator: Shark Bird, MD, CMD; Chair, Education
Committee; Director, FMDA

Start of the Conference
THURSDAY, OCT. 24

CONCURRENT SESSIONS A

5:10-6:10 p.m.

Grand Caribbean 8-10

➤ **105** Plugging Technology
into Health Care to Provide High
Quality Care While Also Tying in
All Stakeholders Involved in the
Patient's Care

(1 hour)

◀ Krishan Nagda, MD; Chief
Executive Officer, Central Florida
Inpatient Medicine (CFIM); CEO,
Spectrum Medical Partners



Krishan Nagda

Moderator: Alfonso Gonzalez-Rodriguez, MD, CMD;
Member, Education Committee

Schedule of Events

Thursday and Friday, Oct. 24-25, 2019

2

5:10-6:10 p.m.

Grand Caribbean 11-12

106 Home Visiting Programs: A Study in Return to Hospital Reduction

(1 hour)

◀ Gabriel Nuriel, DO; CEO, Chief Medical Officer, Founder, Primary Care of Central Florida & Home Physicians Group

Moderator: Laurie Sheffield, ARNP, DNS



Gabriel Nuriel

CONCURRENT SESSIONS B

6:15-7:15 p.m.

Grand Caribbean 8-10

107 Sleepless in Orlando

(1 hour)

◀ Ariel Cole, MD, FAAFP, CMD; Director, Geriatric Fellowship, AdventHealth, Winter Park, FL; Assistant Director, AdventHealth Family Medicine Residency; Clerkship Director, Dept. of Geriatrics, Florida State University College of Medicine; Assistant Professor, University of Central Florida College of Medicine



Ariel Cole

◀ Alan Obringer, RPh, CPh, CGP; President, Guardian Pharmacy of Orlando

Moderator: Elizabeth Hames, DO, CMD; Member, Education Committee; Director, FMDA; Editor, Progress Report, FMDA

6:15-7:15 p.m.

Grand Caribbean 11-12

108 Advanced Directives 2019 Update: A Humorous Guide to a Serious Topic

(1 hour)

◀ David LeVine, MD, CMD; Chief Medical Officer, Menorah Manor, St. Petersburg, FL; Clinical Associate Professor, Kansas City University of Medicine



David LeVine



Eric S. Kane

and Biosciences College of Osteopathic Medicine

◀ Eric S. Kane, Esq.; Eric S. Kane, P. L.

Moderator: Lauren Tafur, ARNP

FRIDAY, OCT. 25

7:15 a.m.-5:45 p.m.

Registration & Information
Grand Caribbean Registration

7:30-8:30 a.m.

PreFunction East

Light Continental Breakfast

7:45-8:30 a.m.

St. Croix 2



THE FLORIDA SOCIETY
FOR POST-ACUTE AND
LONG-TERM
CARE MEDICINE

Annual Membership Meeting

8:35-8:45 a.m.

Grand Caribbean 6

President's Welcome

Rhonda Randall, DO

8:45-9:45 a.m.

Grand Caribbean 6

109 Keynote: State of the State

(1 hour)

◀ Mary C. Mayhew, Secretary, Florida's Agency for Health Care Administration

Moderator: Rhonda Randall, DO; Member Education Committee; President, FMDA



Mary C. Mayhew

9:50-10:50 a.m.

Grand Caribbean 6

110 Social Determinants of Health: Cohesion in Culture Change

(1 hour)

◀ Rhonda Randall, DO; EVP & Chief Medical Officer, UnitedHealthcare Employer & Individual

Moderator: Robert Kaplan, MD, CMD; Member, Education Committee; Chairman of the Board, FMDA



Rhonda Randall

* **Product Theaters:** CE/CME credit is not provided for these programs. In compliance with PhRMA guidelines, spouses and other guests of healthcare professionals are not permitted to attend company-sponsored programs. Certain other restrictions and state-specific mandates may apply.

3

Schedule of Events

Friday, Oct. 25, 2019

10:55-11:55 a.m.

Grand Caribbean 6

111 Update on Depression, Anxiety & Mood Disorders (1 hour)

◀ Greg A. Sullivan, MD;
Department of Psychiatry and Behavioral Neurosciences,
University of South Florida
Morsani College of Medicine



Greg A. Sullivan

Moderator: Beatrice Matthews, DNP; Member, Education Committee

12-1 p.m.

Grand Caribbean 10-12

PRODUCT THEATER LUNCH* (NON-CME/CPE/CE)

A LAMA Administered via Natural Breathing for the Treatment of COPD

Speaker: Richard G. Stefanacci, DO, MGH, MBA, AGSF, CMD

– Sponsored by *Sunovion Pharmaceuticals*

1-2 p.m.

Grand Caribbean 6

112 Public Policy Spotlight (1 hour)

◀ David A. Nace, MD, MPH, CMD; Associate Professor of Medicine and Director, Long-Term Care, Division of Geriatric Medicine, University of Pittsburgh Institute on Aging; Chief of Medical Affairs, UPMC Senior Communities; Chair, Public Policy Committee and President-Elect, AMDA – The Society for Post-Acute and Long-Term Care Medicine



David A. Nace

◀ Alex Bardakh, MPP, PLC; Director, Public Policy & Advocacy, AMDA – The Society for Post-Acute and Long-Term Care Medicine



Alex Bardakh

Moderator: Marcia Gilkes, ARNP

2:05-3:20 p.m.

Grand Caribbean 7

TRADE SHOW, POSTER PRESENTATIONS, AND SILENT AUCTION

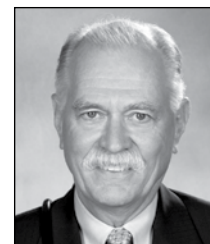
Poster Sessions are sponsored by *OptumCare*

3:20-4:20 p.m.

Grand Caribbean 6

113 Update on Physician Orders for Life-Sustaining Treatments (POLST) (1 hour)

◀ Leonard R. Hock Jr., DO, MACOI, CMD, HMDC, FAAHPM; Immediate Past-President, FMDA



Leonard R. Hock Jr.

Moderator: Kenya Rivas, MD, CMD; Member, Education Committee; Director, FMDA

CONCURRENT SESSIONS C

4:25-5:25 p.m.

Grand Caribbean 1-2

114 Strategies: How to React When a Lawsuit Falls on Your Lap (1 hour)

◀ Elizabeth Zwibel, Esq.; Swope, Rodante PA, Tampa



Elizabeth Zwibel

Moderator: Maria Gonzalez-Rodriguez, MD, CMD; Member, Education Committee

4:25-5:25 p.m.

Grand Caribbean 3-5

115 Falls: What Causes Them and How Do We Prevent Them (1 hour)

◀ Ronald T. Garry, MD; President, Florida Geriatrics Society; Subsection Chief, Geriatrics, Naples Community Hospital; President, Naples Premier Concierge



Ronald T. Garry

Moderator: Mark L. Beauchamp, MD, CMD; Member, Education Committee; Chair, Quality Champion Award Committee, FMDA

5:30-7 p.m.

Grand Caribbean 7

Welcome Reception for Trade Show, Poster Sessions, and Silent Auction

– Sponsored by *OptumCare*

Schedule of Events

4

Saturday, Oct. 26, 2019

SATURDAY, OCT. 26

6:30 a.m.-5:45 p.m. **Registration & Information**

Grand Caribbean Registration

7-8 a.m. **Grand Caribbean 6**

▶ **116 Red-Eye Rounds:** **PA/LTC and Geriatrics** **Clinical Quandaries**

(1 hour)

PANELISTS

◀ Paul Katz, MD, CMD; *Chair, Florida State University College of Medicine, Dept. of Geriatrics; Past-President, AMDA – The Society for Post-Acute and Long-Term Care Medicine*

◀ Rick Foley, PharmD, CPh, BCGP, FASCP; *Consultant Pharmacist, Omnicare Central FL; Clinical Professor of Geriatrics, UF College of Pharmacy; Director, FMDA; Co-Chair, FMDA's Quality Advocacy Coalition; Immediate Past-Chair, Florida Chapter American Society of Consultant Pharmacists*

◀ Naushira Pandya, MD, CMD; *Associate Professor and Chair, Department of Geriatrics, Nova Southeastern College of Osteopathic Medicine; Past-President, AMDA – The Society for Post-Acute and Long-Term Care Medicine*

◀ Marva Edwards-Marshall, DNP, ARNP-BC; *Director of Clinical Operations, OptumCare Texas; Director, FMDA*

Moderator: Angel Tafur, MD, CMD; Vice Chair, Education Committee; Program Director; President-Elect, FMDA



Paul Katz



Rick Foley



Naushira Pandya



Marva Edwards-Marshall

*** Product Theaters:** CE/CME credit is not provided for these programs. In compliance with PhRMA guidelines, spouses and other guests of healthcare professionals are not permitted to attend company-sponsored programs. Certain other restrictions and state-specific mandates may apply.

8-9 a.m. **Grand Caribbean 7**

Continental Breakfast in Exhibit Hall with Trade Show, Poster Presentations, and Silent Auction
Poster Sessions are sponsored by OptumCare
Continental Breakfast sponsored by VITAS Healthcare

9:05-10:35 a.m.

Grand Caribbean 6

▶ **117 National Leaders Forum** (1.5 hours)



Deborah Dunn



Lisa Morris



Arif Nazir

◀ GAPNA: Deborah Dunn, EdD, MSN, GNP-BC, ACNS-BC, GS-C; *President, Gerontological Advanced Practice Nurses Association*

◀ ASCP: Lisa Morris, RPh, BCGP, FASCP; *President, American Society of Consultant Pharmacists*

◀ Arif Nazir, MD, FACP, CMD, AGSF; *President, AMDA – The Society for Post-Acute and Long-Term Care Medicine*

Moderator: Robert Kaplan, MD, CMD; Member, Education Committee; Chairman of the Board, FMDA

**Chinese Auction &
Traditional Silent Auction Program**
Friday and Saturday, Oct. 25-26, 2019
During Trade Show Hours
in the Exhibit Hall
Grand Caribbean 7

Conference Photography

Workshops, sessions, and other FMDA and BCP events are considered to be public events. Photographs taken by photographers at the event may be used by FMDA for promotional purposes. As a registered participant or exhibitor in these events, you agree that your photograph, if taken, may be used in this manner and you waive any claim to compensation.

5

Schedule of Events

Saturday, Oct. 26, 2019

10:40-11:40 a.m.

Grand Caribbean 6

118 Sepsis: Early Recognition & Optimizing Outcomes in LTC

(1 hour)

◀ Joseph G. Ouslander, MD;
Professor and Senior Associate
Dean for Geriatric Programs; Chair,
Department of Integrated Medical
Science, Charles E. Schmidt College of
Medicine at Florida Atlantic University (FAU); Executive
Editor, *Journal of the American Geriatrics Society*



Joseph G. Ouslander

◀ Bernardo Reyes, MD; Associate
Director of the Geriatric and Palliative
Rotations, Assistant Professor of
Integrated Medical Science, Charles E.
Schmidt College of Medicine at FAU



Bernardo Reyes

Moderator: Leonard R. Hock Jr., DO,
MACOI, CMD, HMD, FAAHPM;
Member, Education Committee,
Immediate Past-President, FMDA

11:45 a.m.-12:30 p.m.

Grand Caribbean 7

Break in Exhibit Hall with Trade Show,
Poster Presentations, and Silent Auction.
Poster Sessions are sponsored by
OptumCare.

12:35-1 p.m.

Grand Caribbean 10-12

AWARDS AND RECOGNITION

1-2 p.m.

Grand Caribbean 10-12

PRODUCT THEATER LUNCH* (NON-CME/CPE/CE)

A Look at Seizures in Long-Term Care: Highlighting a
Treatment Option for Partial-Onset Seizures

Speaker: Selim Benbadis, MD

– Sponsored by **Sunovion Pharmaceuticals**

2:05-3:05 p.m.

Grand Caribbean 6

119 Clinical Leadership in the New Healthcare Era: Wait or Innovate?

(1 hour)

◀ Arif Nazir, MD, FACP, CMD,
AGSF; Chief Medical Officer,
Signature HealthCARE



Arif Nazir

Moderator: Diane Sanders-Cepeda, DO,
CMD; Member, Education Committee; Director, FMDA

CONCURRENT SESSIONS D

3:10-4:10 p.m.

Grand Caribbean 1-2

120 Physicians Are Essential to Post-Acute and Long-Term Care Success

(1 hour)

◀ Michael R. Wasserman, MD;
President and Chair, Education
Committee, California Association of
Long-Term Care Medicine



Michael R. Wasserman

Moderator: Michelle Lewis, MSN, APRN; Member,
Education Committee; President, FL-GAPNA

3:10-4:10 p.m.

Grand Caribbean 3-5

121 Using Data to Drive Antimicrobial Stewardship in PA/LTC Facilities

(1 hour)

◀ Dheeraj Mahajan, MD, MBA,
MPH, FACP;
Clinical Assistant Professor of
Medicine, University of Illinois at
Chicago; Section Chief, Geriatrics,
Advocate Illinois Masonic Medical Center



Dheeraj Mahajan

Moderator: Marva Edwards-Marshall, DNP

Schedule of Events

6

Saturday and Sunday, Oct. 26-27, 2019

CONCURRENT SESSIONS E

4:15-5:15 p.m. Grand Caribbean 1-2

122 Be a Full Code! CPT Coding in the Nursing Home (1 hour)

◀ Robert A. Zorowitz, MD, MBA, CMD; *Senior Medical Director, Optum CarePlus, New York, NY*

Moderator: Michael Foley, MD, CMD; Secretary-Treasurer, FMDA



Robert A. Zorowitz

4:15-5:15 p.m. Grand Caribbean 3-5

123 The Patient Driven Payment Model (PDPM) and the Impact on Resident Centered Care (1 hour)

◀ Loni Collard, RN, RAC-CT, DNS-CT; *Corporate Director of Utilization Review, Greystone Healthcare Management*

Moderator: Shark Bird, MD, CMD; Chair, Education Committee; Director, FMDA



Loni Collard

5:30-6:55 p.m. Cayman Court

President's Wine & Cheese Reception – Sponsored by Consulate Health Care

6:55-7:30 p.m. Grand Caribbean 1-2

Advanced Practice Nurses and Physician Assistants Networking Meeting

6:55-7:30 p.m. Grand Caribbean 8-9

Pharmacists Networking Meeting

SUNDAY, OCT. 27

6:45-7:45 a.m.

Turks 1

Conference Planning Committee Review & Wrap-up Meeting

Open to all members interested in learning more about how we plan, implement, and evaluate our annual conference.

A light continental breakfast will be served.

7:30 a.m.-12 p.m.

Registration & Information
Grand Caribbean Registration

7:20-9 a.m.

PreFunction East

Light Continental Breakfast

7:50-8:35 a.m.

Grand Caribbean 6

124 Common Symptoms of Syncope: Complex Causes — A Clinician's Approach (0.75 hour)

◀ Pradipkumar Jamnadas, MD; *Founder & Medical Director, Cardiovascular Interventions, Orlando, FL; Assistant Clinical Professor, Florida State University and University of Central Florida College of Medicine*



Pradipkumar Jamnadas

Moderator: Angel Tafur, MD, CMD; Vice Chair, Education Committee; Program Director; President-Elect, FMDA

8:40-9:25 a.m.

Grand Caribbean 6

125 AHCA Regulatory Update (0.75 hour)

◀ Kimberly R. Smoak, MSH, QIDP; *Bureau Chief of Field Operations, Division of Health Quality Assurance, Agency for Health Care Administration*



Kimberly R. Smoak

Moderator: Rhonda L. Randall, DO; Immediate Past-President, FMDA

7

Schedule of Events

Sunday, Oct. 27, 2019

9:30-10:15 a.m.

Grand Caribbean 6

126 Innovative Approaches to Implement Evidence Based Deprescribing Practices in PA/LTC Setting (0.75 hour)

◀ Harry S. Krulewitch, MD, MPH; Assistant Professor Family Medicine, Oregon Health & Science University

Moderator: Rick Foley, PharmD; Director, FMDA



Harry S. Krulewitch

10:20-11:05 a.m.

Grand Caribbean 6

127 SNF Five-Star Quality Metrics 101 (0.75 hour)

◀ Melissa L. Green, RN, MSHA, RAC-C; Co-Founder and Chief Clinical Officer, Trio Healthcare, Atlanta, GA

◀ Chris Masterson, RN, LNHA, WCC; President, LOML Health Care Solutions, Lithia, FL

Moderator: Shark Bird, MD, CMD; Chair, Education Committee; Director, FMDA



Melissa L. Green



Chris Masterson

11:10-11:55 a.m.

Grand Caribbean 6

128 Opiate Withdrawal Management (0.75 hour)

◀ Melissa Alvarez Perez, MD, FAAPMP, CIME, CWSP, DABAM; Prospira-Central Florida Pain Management

Moderator: Simone Minto-Pennant, PharmD; Member, Education Committee



Melissa Alvarez Perez

11:55 a.m.

END OF CONFERENCE Announcements, Door Prizes, etc.

– Please note that speakers and topics for this meeting are subject to change without notice.

The Optum care model



Impact in **your facility**

Elevates quality while reducing costs

Improves census stability

Financial benefits include quality incentives

Care on site reduces ER and hospital visits

Provides an added layer of care for long-term residents in participating health plans.



Let's talk about a partnership in care.
Call us at **1-877-800-1665**.



optum.com/LongTermCare



UnitedHealthcare®



OPTUM®

86785-092019



THE FLORIDA SOCIETY
FOR POST-ACUTE AND
LONG-TERM
CARE MEDICINE



NADONALTC
NATIONAL ASSOCIATION OF DIRECTORS OF NURSING ADMINISTRATION LONG TERM CARE



Florida Chapters



THE FLORIDA SOCIETY
FOR POST-ACUTE AND
LONG-TERM
CARE MEDICINE

Best Care Practices in the Post-Acute and Long-Term Care Continuum 2019

Jointly Provided by FMDA & AMDA



Best Care
Practices
In the Post-Acute &
Long-Term Care Continuum

28th ANNUAL PRESIDENT'S WINE & CHEESE RECEPTION

Saturday, October 26, 2019

5:30-6:55 p.m. ~ Cayman Court

Loews Sapphire Falls Resort at Universal Orlando



Sponsored by



CONSULATE HEALTH CARE



THE FLORIDA SOCIETY
FOR POST-ACUTE AND
LONG-TERM
CARE MEDICINE

Best Care Practices in the Post-Acute and Long-Term Care Continuum 2019
Jointly Provided by FMDA & AMDA



Best Care
Practices
In the Post-Acute &
Long-Term Care Continuum

2019 Annual Trade Show

Exhibitors

Acadia Pharmaceuticals
 Advanced Care Solutions
 AHCA-Florida HIE Service
 Astellas Pharma
 AstraZeneca
 Avanir Pharmaceuticals
 Boehringer Ingelheim
 Pharmaceuticals
 Cornerstone Hospice
 Epilepsy Foundation of
 America
 Feel Good Inc.
 FL-GAPNA
 Florida Blue
 Florida Geriatrics Society
 Fusion Care

Lilly Pharmaceuticals
 NADONA
 Novartis Pharmaceuticals
 Optum
 Scilex Pharmaceuticals
 Sopris Health
 Spectrum/Seeman Holts
 Healthcare
 Sunovion Pharmaceuticals
 SunPharma
 Theraworx Protect by
 Avadim Health
 Thrive Behavioral Sciences
 United Apollo International
 VITAS HealthCare
 Vohra Wound Physicians

*Show your support by visiting these exhibitors,
and be eligible to win great door prizes!*

2019 Annual Trade Show Exhibitors (A)

ACADIA Pharmaceuticals Inc. is a biopharmaceutical company focused on the development and commercialization of innovative medicines to address unmet medical needs in neurological and related central nervous system disorders.

Advanced Care Solutions: We understand hospital readmissions, the reduction in reimbursement and how all the changes will impact each of you in the upcoming year. We're not just your ordinary supplier. We are a nurse-driven supplier and are here to offer you a reduction in cost, while obtaining better outcomes, and with a higher quality of products allowing your patients to experience greater satisfaction while increasing compliance.

Astellas Pharma US, Inc., a subsidiary of Tokyo-based Astellas Pharma, Inc., is a research-based pharmaceutical company dedicated to improving the health of people around the world through innovative pharmaceutical products. Astellas ranks among the top 20 pharmaceutical companies in the world. For more information on Astellas, please go to www.astellas.com/us.

AVANIR Pharmaceuticals, Inc., is a biopharmaceutical company currently promoting NUEDEXTA, the first and only FDA-approved treatment for PBA (pseudobulbar affect). PBA is sudden, involuntary outbursts of crying or laughing associated with neurologic diseases or injuries to the part of the brain that controls normal expression of emotion.

Boehringer Ingelheim Pharmaceuticals, Inc., the U.S. subsidiary of Boehringer Ingelheim, headquartered in Germany, operates globally with more than 44,000 employees. The company is committed to researching, developing, manufacturing, and marketing novel products of high therapeutic value for human and veterinary medicine. Visit <http://us.boehringer-ingelheim.com>. Follow us on twitter at @boehringerus.

Cornerstone Hospice — Originally founded in 1984 by community members who saw a need, we are a not-for-profit corporation that is dedicated to helping families and patients live their best lives. We aim to provide the highest standards of hospice care, as evidenced by our Joint Commission Accreditation paired with an unwavering legacy of community commitment.

FL-GAPNA and Florida Gulf Coast Chapter of GAPNA have been active state chapters since 2009 and 2010, respectively. Both of these chapters have a strong membership. They invite any advanced practice nurse who has an interest in caring for the older adult to visit their websites and consider becoming an active member. Both chapters alternate holding annual conferences each spring. FL-GAPNA's next conference is on April 24, 2020.

They invite you to visit their booth and learn more about GAPNA. Both chapters welcome advanced practice nurses from across the state of Florida who are interested in a dynamic professional organization that represents the interests of advanced practice nurses who care for older adults.

Florida Blue, Florida's Blue Cross and Blue Shield company, is a leader in Florida's health industry. Florida Blue is a not-for-profit, policyholder-owned, tax-paying mutual company. Headquartered in Jacksonville, FL, it is an independent licensee of the Blue Cross and Blue Shield Association, an association of independent Blue Cross and Blue Shield companies. For more information, visit www.FloridaBlue.com.

Johnson & Johnson Health Care Systems Inc. (JJHCS) provides contracting, supply chain, and business services to customers of Johnson & Johnson companies, including hospital systems and group purchasing organizations, health plans, physicians, specialty pharmacy providers, distributors and wholesalers, pharmacy benefits managers, long-term care providers, employers, government payor programs, and government health care institutions.

Continued on the next page →

2019 Annual Trade Show Exhibitors (B)

NADONA — Since 1986, the National Association of Directors of Nursing Administration in Long Term Care has been the leading advocate and educational organization for DONs, ADONs, and RNs (in management positions and/or serving as Director of Nursing Services, Nurse Administrator, VP of Clinical Services, Consultants, Nurse Educators, MDS Nurses, Staff Development, Transitional Care Nurse, Infection Prevention Nurses, or any RN who has previously served in a role equivalent to DON or ADON) in long-term care (LTC). NADONA/LTC was founded by dedicated LTC professionals, and our board of trustees still consists of LTC professionals. We understand your daily challenges and are here to provide you with the tools you need for professional success.

Optum is delighted to again support FMDA. Optum is dedicated to helping people live healthier lives, and to helping make the health system work better for everyone. Please visit our booth to meet us, and learn additional information about the United Healthcare Nursing Home Plan and Optum Provider delivery team.

Scilex responsibly develops and brings branded products to market using technologies designed to maximize quality of life for the patients we serve. Our product, ZTlido® (lidocaine topical system) 1.8%, is a branded lidocaine topical system formulation for the treatment of pain associated with post-herpetic neuralgia, referred to as after-shingles pain, www.scilexpharma.com.

Sopris Health offers the only fully automated digital assistant for healthcare documentation, specializing in post-acute. “Sopris Assistant” uses a combination of voice & A.I. in a predictive, personalized, chat-style interface, then delivers an immediate clinical note directly to the EHR. Users spend up to 82% less time per note – 10 hours each week.

Sun Pharma is a fully integrated pharmaceutical company that has offices in 40-plus countries with focuses in Long-Term Care, Dermatology, Ophthalmology, CNS and Oncology.

Sunovion is a leading pharmaceutical company dedicated to discovering, developing and commercializing therapeutic products that advance the science of medicine in the central nervous system (CNS) and respiratory disease areas.

Thrive Behavioral Sciences provides psychiatric medication management and psychotherapy talk therapy to residents of skilled and assisted living facilities. Our behavioral health specialists deliver consistent services to improve and stabilize mental health needs. We work proactively and collaboratively with facility staff and attending physicians to implement an optimal treatment plan.

VITAS Healthcare — Established in 1978, VITAS® Healthcare is the nation’s leading provider of end-of-life care. VITAS ensures that terminally ill patients and their families have immediate access to compassionate and high-quality end-of-life care. VITAS operates 47 hospice programs in 14 states caring for more than 18,000 patients each day. Visit VITAS.com.

Vohra Wound Physicians is the nation’s largest physician group specialized in wound management. We partner with post-acute care facilities to develop center of excellence programs that are physician led, patient centric, and data driven. We provide comprehensive training for our facility nurses with certification & CEUs.



Call for Presentations: 2020 Annual Conference

The CME/Education Committee for Best Care Practices in the Post-Acute and Long-Term Care Continuum invites you to submit educational program proposals and abstracts for the 2020 annual conference. The meeting will be held **Oct. 22-25, 2020**, at **Loews Sapphire Falls Resort at Universal Orlando, FL**. Submissions should be based on current trends and best practices in post-acute, long-term care, and geriatrics. Of special interest is emerging clinical information, research, innovations in non-pharmaceutical modification of challenging behaviors, emerging concepts in management and medical direction, and updates on approaches to regulatory compliance. The Committee also seeks proposals that emphasize strategies for successful cooperation with advanced practice nurses, physician assistants, directors of nursing, consultant pharmacists, and administrators, as well as the entire interdisciplinary team.

Year after year, conference evaluations show that a majority of attendees come for the educational programs and the associated continuing-education credits. Our attendees expect clinical topics to be evidence-based with cited references, and management topics to be relevant to their setting and grounded in best practices. For their learning experience, attendees seek opportunities to network with colleagues and engage in interactive presentations through various formats such as point-counterpoint, case-based discussion (Q&A), small groups and/or role play, and practical information for valuable take-home tools such as handouts, key points, guides, or quick tips.

If you have an interest in presenting at the 2020 conference, or know some knowledgeable and excellent speakers, please be directed to our proposal submission page at www.bestcarepractices.org.

— *Submission Site Opens: Nov. 13, 2019*

— *Speaker Presentation Submission Deadline: Feb. 1, 2020*

For information, contact the FMDA business office at ian.cordes@fmda.org or call (561) 689-6321.

***A limited supply
of printed handouts is available
at the registration counter.***

\$85



103 - Preventing Medical Errors

(2 hours)

Cathy Robinson-Pickett, BS

LEARNING OBJECTIVES

At the conclusion of this program, attendees should be able to:

1. Recognize error-prone situations.
2. Discuss processes that can be used to improve client safety.
3. Recognize individual responsibility for reporting errors.
4. Discuss the medical community's role in public education to reduce medical errors.
5. List the five most misdiagnosed conditions during the past two years.
6. Define root cause analysis and explain how it is used in correcting medication errors in pharmacy.

NOTES

[illegible]

Thursday, Oct. 24 , 2019 ❖ 11:10 a.m.-1:10 p.m.
Grand Caribbean 11-12

104 - Wound Care 101: Achieving Excellence Through Best Practices

(3 hours)

Melissa M. Bray, MD

Victoria A. Nalls, GNP-BC, CWS, ACHPN
Pamela Scarborough, PT, DPT, MS, CWS

LEARNING OBJECTIVES

At the conclusion of this program, attendees should be able to:

1. Discuss wound types including pressure, venous, arterial, neuropathic, post-surgical, infectious, and atypical.
2. Review dressing treatment selection and Medicare Part B coverage.
3. Demonstrate offloading and pressure relief.
4. Review Federal Guidelines F-686 and others.
5. Assess infection control and wound rounds.
6. Evaluate litigation and state survey risks.
7. Discuss the importance of documentation and impact on PDPM.

NOTES

[illegible]

Thursday, Oct. 24 , 2019 ❖ 2:05-5:05 p.m.
Grand Caribbean 11-12

111 – Update on Depression, Anxiety & Mood Disorders

(1 hour)

Greg A. Sullivan, MD

LEARNING OBJECTIVES

At the conclusion of this program, attendees should be able to:

1. Describe the impact that mood, anxiety, and depression play in long-term morbidity and mortality.
2. Identify primary mood disorders and associated first- and second-line treatments.
3. Recognize primary anxiety disorders and select the most appropriate treatments.
4. Demonstrate an understanding of depression and the role environment, sleep hygiene, and pharmacology may play.
5. Discuss the importance of treating depression and select the most effective strategies.

NOTES

[illegible]

Friday, Oct. 25 , 2019 ❖ 10:55-11:55 a.m.
Grand Caribbean 6

112 – Public Policy Spotlight
(1 hour)

(1 hour)

David A. Nace, MD, MPH, CMD
Alex Bardakh, MPP, PLC

LEARNING OBJECTIVES

At the conclusion of this program, attendees should be able to:

1. Discuss latest federal legislative and regulatory developments.
2. Describe the impact of health care reform initiatives on PA/LTC practitioners.
7. Identify current value-based medicine reporting requirements.
8. Integrate strategies for developing a practice to meet current payment structure demands.
6. Discuss quality reporting strategies that align with clinical practice and facility reporting requirements.
7. Identify regulatory barriers to quality care.

NOTES

[illegible]

Friday, Oct. 25 , 2019 ♦ 1-2 p.m.
Grand Caribbean 6



115 – Falls: What Causes Them and How Do We Prevent Them

(1 hour)

Ronald T. Garry, MD

LEARNING OBJECTIVES

At the conclusion of this program, attendees should be able to:

1. Discuss epidemiology, morbidity, and mortality and how aging increases risk of falling.
2. Review falls with regard to intrinsic and extrinsic risk factors.
3. Demonstrate how medications and environment can increase the risk of falling.
4. Integrate a comprehensive strategy to evaluate those falls and programs that can be implemented to decrease incidence of falls.

NOTES

[illegible]

Friday, Oct. 25 , 2019 ❖ 4:25-5:25 p.m.
Grand Caribbean 3-5

116 – Red-Eye Rounds: PA/LTC and Geriatrics Clinical Quandaries

(1 hour)

Rick Foley, PharmD, CPh, BCGP, FASCP
Paul Katz, MD, CMD

Marva Edwards-Marshall, DNP, ARNP-BC
Naushira Pandya, MD, CMD

LEARNING OBJECTIVES

At the conclusion of this program, attendees should be able to:

1. Develop an effective approach to the differential diagnosis of common clinical issues in PA/LTC.
2. Define current evidence-based therapeutic interventions for common clinical challenges in PA/LTC.
3. Discuss an effective approach to the comprehensive management of common geriatric syndromes encountered in PA/LTC.
4. Delineate effective strategies to prevent potentially avoidable hospitalizations.

NOTES

[illegible]

Saturday, Oct. 26 , 2019 ♦ 7-8 a.m.
Grand Caribbean 6

119 – Clinical Leadership in the New Healthcare Era: Wait or Innovate?

(1 hour)

Arif Nazir, MD, FACP, CMD, AGSF

LEARNING OBJECTIVES

At the conclusion of this program, attendees should be able to:

1. Describe key changes in the post-acute health care setting.
2. Discuss the importance of leadership in value-based care.
3. Implement strategies for motivating teams through innovative solutions.
4. Evaluate the role of the future medical director in the post-acute setting.

NOTES

[illegible]

Saturday, Oct. 26 , 2019 ♦ 2:05-3:05 p.m.
Grand Caribbean 6

120 – Physicians Are Essential to Post-Acute and Long-Term Care Success

(1 hour)

Michael R. Wasserman, MD

LEARNING OBJECTIVES

At the conclusion of this program, attendees should be able to:

1. Describe the value of medical directors and certified medical directors (CMDs).
2. Discuss how medical directors and CMDs impact on a SNF's quality measures.
3. Assess the importance of physician leadership on staff morale, quality, and clinical results.
4. Review the art of developing a positive relationship with facility leadership and staff.
5. Discuss how to integrate high-quality person-centered care with revenue-producing care.

NOTES

[illegible]

Saturday, Oct. 26 , 2019 ♦ 3:10-4:10 p.m.
Grand Caribbean 1-2

123 – The Patient Driven Payment Model (PDPM) and the Impact on Resident Centered Care

(1 hour)

Loni Collard, RN, RAC-CT, DNS-CT

LEARNING OBJECTIVES

At the conclusion of this program, attendees should be able to:

1. Explain PDPM, the new SNF reimbursement system, and how it differs from the former RUG IV PPS system.
2. Describe the types of resident characteristics and services that impact payment.
3. Understand the role of therapy in the new model.
4. Discuss how PDPM relates to resident centered care initiatives.
5. Describe the crucial role of physician collaboration within the PDPM model.

NOTES

[illegible]

Saturday, Oct. 26 , 2019 ❖ 4:15-5:15 p.m.
Grand Caribbean 3-5

124 – Common Symptoms of Syncope: Complex Causes — A Clinician's Approach

(0.75 hour)

Pradipkumar Jamnadas, MD

LEARNING OBJECTIVES

At the conclusion of this program, attendees should be able to:

1. Distinguish arrhythmogenic syncope from other causes.
2. Manage orthostatic hypotension.
3. Describe vasovagal physiology.

NOTES

[illegible]

Sunday, Oct. 27 , 2019 ❖ 7:50-8:35 a.m.
Grand Caribbean 6

127 – SNF Five-Star Quality Metrics 101

(0.75 hour)

Melissa L. Green, RN, MSHA, RAC-C
Chris Masterson, RN, LNHA, WCC

LEARNING OBJECTIVES

At the conclusion of this program, attendees should be able to:

1. List the three domains of the Five-Star Rating System.
2. Discuss how each component is calculated and the impact on the overall Five-Star Rating.
3. Describe April 2019 revisions to the Five-Star Rating System.
4. Demonstrate strategies to implement best practices for Five-Star improvement.

NOTES

[illegible]

Sunday, Oct. 27 , 2019 ❖ 10:20-11:05 a.m.
Grand Caribbean 6

128 – Opiate Withdrawal Management

(0.75 hour)

Melissa Alvarez Perez, MD, FAAPMP,
CIME, CWSP, DABAM

LEARNING OBJECTIVES

At the conclusion of this program, attendees should be able to:

1. Discuss the mechanism of opiate withdrawal and dependence.
2. Identify symptoms of opiate withdrawal.
3. Review FDA-approved and off-label medications available to manage opiate withdrawal.
4. Describe successful strategies for opiate withdrawal management.

NOTES

[illegible]

Sunday, Oct. 27 , 2019 ❖ 11:10-11:55 a.m.
Grand Caribbean 6

2019 Poster Presentations

POSTER SESSION SCHEDULE

Please join our presenters in Grand Caribbean 7

Friday, Oct. 25

2:05-3:20 p.m.; 5:30-7 p.m.

Saturday, Oct. 26

8-9 a.m., 11:45 a.m.-12:30 p.m.

12:35-1 p.m. Presenters Recognition

The Poster Review Committee wishes to thank this year's presenters:

(Current as of Sept. 27, 2019)

Wound Management and Lower Extremity Amputations in Patients with Multiple Co-Morbidities: An Analysis

Author & Poster Presenter: Corry Chapman, MD

Abstract: Lower extremity amputations are often the natural progression of infections in patients with diabetes, peripheral artery disease, end-stage renal disease and other morbidities, and are frequently seen and managed by wound care physicians in long-term care facilities. This paper examines the incidence and outcomes of lower-extremity amputations, with a particular focus on the advisability of below-the-knee amputations versus above-the-knee amputations, and relates its findings to two example cases managed by the author.

Pursuit of Excellence: Wound Care Practices Strategies and Facility Ratings

Authors & Poster Presenters: Tatyana Faynberg, DO, MS, CWSP;
and Melissa Purvis, RN-BC, MSN, NHA

Introduction and Objectives: Nursing homes are different in quality of services they provide. CMS created the Five-Star Quality Rating System to aid consumers in comparing nursing homes. The star rating system assigns each facility a rating between one and five stars. There is one overall five-star rating for each nursing home. It comprises the three following elements, each with its own five-star rating: health inspection results, staffing data, and quality of care. Wound care practice strategies can influence both health inspection results and quality of resident care, thus help to achieve better overall facility star rating.

Methods: Retrospective review/analyses of wound care practices, prevention measures, and health inspection citations/deficiencies in eighteen nursing homes with overall star ratings varying from one to five stars.

Results: Effective wound care practices include physician monitoring/support, presence of expert wound care nurses, specialist-led wound care education, evidence-based wound treatment and prevention protocols. Multidisciplinary collaboration between healthcare professionals can lead to improved wound prevention and management. Quality measures can also be positively impacted by evidence-based wound care including the percentage of residents who report pain, symptoms of depression, increase rate of successful return to home and increase rate of improvement in residents' ability to move around on their own. Additionally, these wound care practices can lead to minimizing risk of F tags during state survey (F686, F580, F281, F710, F840, F867, F880).

Conclusion: Employing proper wound care practices can improve quality measures and performance during state inspections and thus positively impact overall facility star rating.

When You Hear Hoofbeats: Low Back Pain from Vertebral Osteomyelitis

Author & Poster Presenter: Heather Cappello, MD, CMD **Abstract:** Low back pain is extremely common in older persons. The prevalence of low back pain in the elderly ranged from 13 to 56%. Vertebral osteomyelitis is an uncommon problem, with an incidence of

1:450,000. Despite this rarity, in less than three months, two patients presented to one practitioner in a skilled nursing facility with this condition, but without the diagnosis. Case 1: A 76-year-old Caucasian male presented to the emergency room with a history of severe low back pain over several weeks' duration accompanied by weight loss. He had a CT of the lumbar spine due to a PPM and an ICD defibrillator. The CT of the spine was significant for extensive spondylosis of the spine, with no report of osteomyelitis. The patient subsequently had a TEE while in hospital and was found to have filamentous lesions on multiple leads. The patient was treated with IV Vancomycin for sub-acute bacterial endocarditis and discharged to the skilled nursing facility. While in the nursing facility, the patient's rehabilitation progress was slow due to unremitting low back pain. The patient was sent back to the ER and returned same day with a prescription for Celebrex after being evaluated by orthopedics for back pain. The following day, the patient was evaluated by the nursing home physician and found to have significant tenderness in his lower spine and decreased range of motion in the lower extremities. The patient was directly admitted to the observation unit and CT of the spine was repeated, which revealed L1-2 spondylodiscitis, subsequently biopsy proven as osteomyelitis due to staphylococcus epidermidis. The ICD was removed and the patient was placed on a Life vest with an external source of power and 56 days of IV Vancomycin. The patient subsequently made a full recovery to his baseline functional status, and returned to his home in Chicago where he spent half the year, returning to the skilled nursing facility for rehab during the winter season.

Case 2: A 65-year-old Caucasian female presented to the ER for evaluation of fever, knee pain and swelling and chronic low back pain. Evaluation by orthopedics and infectious disease identified septic arthritis of a 7 year old right knee arthroplasty, which was removed with insertion of antibiotic spacers. Blood and surgical cultures grew strep viridians. She was transferred to the nursing home for completion of IV Vancomycin therapy for her septic knee. In the nursing home, back pain worsened, and narcotic requirements increased. Severe anemia led to repeat hospital evaluation, where a spinal MRI identified acute spondylodiscitis of the L1-2 vertebra, bilateral psoas myositis and a right psoas abscess. After evaluation by neurosurgery the patient chose conservative treatment with long-term antibiotics. She returned to the nursing home to complete her antibiotics and therapy, returning home. Six months later her knee was successfully replaced and she regained full function. Diagnosis of vertebral osteomyelitis can be challenging, as chronic back pain is ubiquitous and imaging studies done early are often negative. The most common mode of transmission of infection to the spine is hematogenous seeding directly to the end plate of the vertebral bodies. This spread occurs via the segmental arteries that provide the blood supply to the peripheral third of the end plates. The intervertebral disk is frequently involved early, and the resulting changes are more easily identified on radiographic studies than the infected focus in the end plate of the vertebral body itself. Long-term care practitioners are frequently involved in caring for complex patients with multiple serious conditions, complicating effective diagnosis and increasing the risk of uncommon diseases. Usually effective consultants buckle under the pressure of patients at high risk for everything, presenting with complicated stories and unusual manifestations of their eventual diagnosis. While horses abound, breadth of knowledge and constant vigilance is required by the long-term care practitioner, if you are to successfully protect your patients from deterioration and death by zebra. All authors have stated there are no financial disclosures to be made that are pertinent to this abstract.

Continued on the next page

The Association Between Discharge Location, Depression, and Hospital Return Rates in Hospitalized Patients 75 and Older

Author & Poster Presenter: Faith Obimdike, MS2

Introduction and Objectives: Approximately 20% of Medicare hospitalizations are due to preventable readmissions within 30 days of discharge, costing billions annually. Medical comorbidities, discharge location, and depression are associated with increased 30-day readmission rates. The aim of this study was to compare 30-day hospital return rates of patients discharged to home and non-home locations with and without depression and identify possible interventions to reduce the return rates in this population.

Methods: Data from the Safe Transitions for at Risk Patients (STAR) program were analyzed for patients ≥ 75 admitted to a community hospital from 07/2015 to 06/2017. Patients were divided into those discharged home (home, ALF, home with acute care) vs those discharged to a non-home location (SNF, acute rehab). These groups were further divided by depression status (ICD-10 codes and/or anti-depressant medication). The 30-day return rates were assessed and compared using Chi Square tests. Returns included emergency visits, observation stays, and inpatient readmissions.

Results: Of the 19,914 patients, 14,759 (60%) were discharged home and 5,155 (21%) non-home, with significantly higher 30-day return rates for non-home patients (28% vs 18%, $p=.000$). There was a significant difference between return rates of patients discharged home who were depressed vs not depressed (21% vs 18%, $p=.017$). There was no significance between non-home discharges who were depressed vs not depressed (30% vs 28%, $p=.210$).

Conclusion: Patients age ≥ 75 were more likely to return to the hospital within 30 days when discharged to non-home locations. Patients discharged home and depressed were more likely to return than their non depressed counterparts. Depression assessment and treatment should be implemented before or immediately after hospital discharge in order to help prevent hospital returns. Future research should control for comorbidities to determine the relative contribution of depression vs medical comorbidities to hospital return rates.

Accessible Online Training: Caring for Older Adults with Epilepsy

Author & Poster Presenter: Elaine Kiriakopoulos, MD, MSc

Introduction and Objectives: Epilepsy affects more than 3.4 million individuals in the U.S., including close to 1 million older adults (age 55+). The incidence of seizures and epilepsy increases in older adults. Each year, more than 50,000 new cases of epilepsy occur in people over age 60, and in 1 out of 2 people the cause is unknown. Providing accessible epilepsy training to a wide range of post-acute (PAC) and long-term care (LTC) professionals will increase the likelihood that older adults with epilepsy receive timely and appropriate care tailored to their specific health needs — care that includes early identification of seizures, the appropriate management of seizures, and awareness of impact and risks present for older adults living with epilepsy.

Methods: The Epilepsy Foundation has created 3 online learning modules to train professionals caring for older adults with epilepsy. Modules address: 1) Epilepsy Basics and Seizure Identification, 2) Treatment of Epilepsy in Older Adults, and 3) Impact and Risks Associated with Epilepsy in Older Adults.

Results: The results of this pilot implementation study will demonstrate the feasibility of delivering targeted online epilepsy education to a diverse spectrum of professionals caring for older adults in PAC and LTC settings. This study will also allow for evaluation of how accessible online learning may impact confidence to care for older adults diagnosed with epilepsy and practice patterns.

Conclusion: The delivery of easily accessible, modular, online epilepsy education to older adult health care providers is critical to increasing the accessibility of quality care for seniors living with epilepsy.

Save the Date!

29th Annual Conference

Oct. 22-25, 2020

LOEWS
SAPPHIRE FALLS
RESORT
UNIVERSAL ORLANDO®



THE FLORIDA SOCIETY
FOR POST-ACUTE AND
LONG-TERM
CARE MEDICINE



**Best Care
Practices**
*In the Post-Acute &
Long-Term Care Continuum*

See You at the 2020 Conference



Android

Best Care Practices in the Post-Acute & Long-Term Care Continuum 2020 is FMDA - the Florida Society for Post-Acute and Long-Term Medicine's 29th Annual Conference, held in collaboration with Florida Chapters of Gerontological Advanced Practice Nurses Association, National Association Directors of Nursing Administration and Florida Geriatrics Society.



Apple



THE FLORIDA SOCIETY
FOR POST-ACUTE AND
LONG-TERM
CARE MEDICINE

Best Care Practices in the Post-Acute and Long-Term Care Continuum 2019
Jointly Provided by FMDA & AMDA



**Best Care
Practices**
*In the Post-Acute &
Long-Term Care Continuum*

<u>TIMES</u>	<u>EVENT</u>	<u>LOCATION</u>
Thursday, Oct. 24		
OPTIONAL PRE-CONFERENCE WORKSHOPS:		
7:30 a.m.-6:30 p.m.	Registration & Information	Grand Caribbean Registration
	Florida Mandatory Licensure Renewal Courses	Grand Caribbean 11-12
8-9 a.m.	101 – Update on HIV/AIDS	Grand Caribbean 11-12
9:05-11:05 a.m.	102 – Domestic Violence	Grand Caribbean 11-12
11:10 a.m.-1:10 p.m.	103 – Preventing Medical Errors	Grand Caribbean 11-12
1:10-2 p.m.	Lunch on Your Own	
2:05-5:05 p.m.	104 – Wound Care 101: Achieving Excellence Through Best Practices	Grand Caribbean 11-12
Start of the Conference		
5:10-6:10 p.m.	CONCURRENT SESSIONS A	
	105 – Plugging Technology into Health Care to Provide High Quality Care While Also Tying in All Stakeholders Involved in the Patient's Care	Grand Caribbean 8-10
	106 – Home Visiting Programs: A Study in Return to Hospital Reduction	Grand Caribbean 11-12
6:15-7:15 p.m.	CONCURRENT SESSIONS B	
	107 – Sleepless in Orlando	Grand Caribbean 8-10
	108 – Advanced Directives 2019 Update: A Humorous Guide to a Serious Topic	Grand Caribbean 11-12
Friday, Oct. 25		
7:15 a.m.-5:45 p.m.	Registration & Information	Grand Caribbean Registration
7:30-8:30 a.m.	Light Continental Breakfast	PreFunction East
7:45-8:30 a.m.	FMDA Annual Membership Meeting	St. Croix 2
8:35-8:45 a.m.	President's Welcome – Dr. Rhonda Randall	Grand Caribbean 6
8:45-9:45 a.m.	109 – Keynote: State of the State	Grand Caribbean 6
9:50-10:50 a.m.	110 – Social Determinants of Health: Cohesion in Culture Change	Grand Caribbean 6
10:55-11:55 a.m.	111 – Update on Depression, Anxiety & Mood Disorders	Grand Caribbean 6
12-1 p.m.	Product Theater Lunch (non-CME/CPE/CE) – Sponsored by Sunovion Pharmaceuticals	Grand Caribbean 10-12
1-2 p.m.	112 – Public Policy Spotlight	Grand Caribbean 6
2:05-3:20 p.m.	Trade Show, Poster Presentations, and Silent Auction Open. Poster Sessions are sponsored by OptumCare	Grand Caribbean 7
3:20-4:20 p.m.	113 – Update on Physician Orders for Life-Sustaining Treatments (POLST)	Grand Caribbean 6
4:25-5:25 p.m.	CONCURRENT SESSIONS C	
	114 – Strategies: How to React When a Lawsuit Falls on Your Lap	Grand Caribbean 1-2
	115 – Falls: What Causes Them and How Do We Prevent Them	Grand Caribbean 3-5
5:30-7 p.m.	Exhibit Hall Welcome Reception sponsored by OptumCare.	Grand Caribbean 7
Saturday, Oct. 26		
6:30 a.m.-5:45 p.m.	Registration & Information	Grand Caribbean Registration
7-8 a.m.	116 – Red-Eye Rounds: PA/LTC and Geriatrics Clinical Quandaries	Grand Caribbean 6
8-9 a.m.	Continental Breakfast in Exhibit Hall with Trade Show, Poster Presentations, and Silent Auction	Grand Caribbean 7
9:05-10:35 a.m.	117 – National Leaders Forum	Grand Caribbean 6
10:40-11:40 a.m.	118 – Sepsis: Early Recognition & Optimizing Outcomes in LTC	Grand Caribbean 6
11:45 a.m.-12:30 p.m.	Break in Exhibit Hall with Trade Show, Poster Presentations, and Silent Auction. Poster Sessions are sponsored by OptumCare.	Grand Caribbean 7
12:35-1 p.m.	Awards & Recognition	Grand Caribbean 10-12
1-2 p.m.	Product Theater Lunch (non-CME/CPE/CE) – Sponsored by Sunovion Pharmaceuticals	Grand Caribbean 10-12
2:05-3:05 p.m.	119 – Clinical Leadership in the New Healthcare Era: Wait or Innovate?	Grand Caribbean 6
3:10-4:10 p.m.	CONCURRENT SESSIONS D	
	120 – Physicians Are Essential to Post-Acute and Long-Term Care Success	Grand Caribbean 1-2
	121 – Using Data to Drive Antimicrobial Stewardship in PA/LTC Facilities	Grand Caribbean 3-5
4:15-5:15 p.m.	CONCURRENT SESSIONS E	
	122 – Be a Full Code! CPT Coding in the Nursing Home	Grand Caribbean 1-2
	123 – The Patient Driven Payment Model (PDPM) and the Impact on Resident Centered Care	Grand Caribbean 3-5
5:30-6:55 p.m.	President's Wine & Cheese Reception – Sponsored by Consulate Health Care.	Cayman Court
6:55-7:30 p.m.	Advanced Practice Nurses & Physician Assistant Networking Meeting.	Grand Caribbean 1-2
6:55-7:30 p.m.	Pharmacists Networking Meeting.	Grand Caribbean 8-9
Sunday, Oct. 27		
6:45-7:45 a.m.	Conference Planning Committee Review & Wrap-up Meeting.	Turks 1
7:30 a.m.-12 p.m.	Registration & Information	Grand Caribbean Registration
7:20-9 a.m.	Light Continental Breakfast	PreFunction East
7:50-8:35 a.m.	124 – Common Symptoms of Syncope: Complex Causes — A Clinician's Approach	Grand Caribbean 6
8:40-9:25 a.m.	125 – AHCA Regulatory Update	Grand Caribbean 6
9:30-10:15 a.m.	126 – Innovative Approaches to Implement Evidence Based Deprescribing Practices in PA/LTC Setting	Grand Caribbean 6
10:20-11:05 a.m.	127 – SNF Five-Star Quality Metrics 101	Grand Caribbean 6
11:10-11:55 a.m.	128 – Opiate Withdrawal Management	Grand Caribbean 6
11:55 a.m.	END OF CONFERENCE – Announcements, Door Prizes, etc. – Please note that speakers and topics for this meeting are subject to change without notice.	