



2023 Conference Syllabus



FMDA's 32nd Annual Conference & Trade Show Oct. 19-22, 2023

FMDA's 32nd Annual Conference is held in collaboration with the Florida Chapters of Gerontological Advanced Practice Nurses Association, National Association Directors of Nursing Administration, and Florida Geriatrics Society.



THE FLORIDA SOCIETY
FOR POST-ACUTE AND
LONG-TERM
CARE MEDICINE



NADONALTC
NATIONAL ASSOCIATION DIRECTORS OF NURSING ADMINISTRATION LONG TERM CARE



EVENT LOCATOR MAP



Wireless access
in the Conference Center
meeting rooms:
Select: Convention Wireless
PIN code: FMDA23

ROSEN
SHINGLE CREEK®
ORLANDO
GATLIN

- A. **Wekiwa Registration**
Registration & Information
- B. **Gatlin Registration 1**
Registration & Information
- C. **Gatlin Foyer**
Registration & Information
- D. **Wekiwa 2**
101, 102, 103, 104, 105
- E. **Wekiwa 3**
Conference Planning
Committee Meeting
- F. **Wekiwa 3/4**
118
- G. **Wekiwa 4**
106
- H. **Wekiwa 5**
119
FMDA Annual Membership Meeting
- I. **Wekiwa 3/4/5**
Friday Product Theater Lunch
- J. **Gatlin A1/2**
President's Welcome
107, 108, 109, 110, 111, 112, 113, 114,
115, 116, 117, 120, 121, 122, 123, 124
Greetings from AMDA Executive Director
Sunday Continental Breakfast
- K. **Gatlin A3/4**
Exhibit Hall Welcome Reception
Annual Trade Show Posters
Continental Breakfast
Break in Exhibit Hall
- L. **Butler**
Saturday Product Theater Lunch
- M. **Sandlake**
President's Wine & Cheese Reception
(on Level 2, not shown)



Level 2



Table of Contents

WELCOME LETTERS	4-7
PROGRAM DESCRIPTION, TARGET AUDIENCE, AND OBJECTIVES	9
MEETING INFORMATION	
Continuing Education, Education Committee, Certificates of Attendance	10-11
CE Credits Calculated by Session and by Profession	12
Conference Faculty: Speaker Biographies	13-21
Faculty Disclosures	33
SOCIAL MEDIA CONTEST	22
RECOGNITION OF OUR SPONSORS.....	24
PROGRAM & SCHEDULE OF EVENTS	25-32
CREDIT CLAIM INSTRUCTIONS.....	33
ANNUAL TRADE SHOW EXHIBITORS	34-39
2024 CALL FOR PRESENTATIONS	52
SESSION-BY-SESSION LEARNING OBJECTIVES.....	40-52
101 – The Journey from Advance Care Planning to End-of-Life WORKSHOP	26
102 – Advance Care Planning with Patient-Directed Doctor’s Orders.....	26
103 – Panel Discussion: Best Practices in Palliative Care and Hospice Services	26
104 – Cardiac Amyloidosis As a Reason for Heart Failure Exacerbation	
Among Older Adults: The Impact of its Increasing Diagnosis in PALTC	26
105 – Diversity, Equity, and Inclusion – In Pursuit of Belonging	27
106 – Can We Improve Management of Overactive Bladder in LTC?	
Examining the Role of Beta-3 Adrenergic Agonists	27
107 – Keynote Address	27
108 – Legal Update for Practitioners.....	27
109 – Psychotropic Stewardship – Phase 3 Guidance and Beyond.....	27
110 – Script for Filling the Gap: The Importance of Medication Management	
and Best Practices in Transitions of Care	28
111 – The Sum Is Greater Than the Parts: Mitigating the Risk – Utilization Review Results	
of a 1-Year SNF Clinical Team Assessment of Difficult Cases.....	28
112 – An Update on Geriatric Syndromes in LTC	29
113 – National Leaders Forum.....	29
114 – National Trends in PALTC	29
115 – AMDA Public Policy Update.....	30
116 – State AHCA Regulatory Update	30
117 – QA&A and QAPI: Driving the Call to Action	30
118 – Medicare Billing & Coding Update	31
119 – From Novice to Expert: Rapid Fire Presentations	31
120 – Red-Eye Rounds: PALTC & Geriatrics Clinical Quandaries.....	32
121 – Geriatric Literature Review	32
122 – Enhancing Heart and Brain Health in PALTC	32
123 – C. Difficile Muy Difícil – 2023	32
124 – OMG...What Can I Put on That? Case-Based Practical Guidance on Topical Wound Treatments	32
Poster Presentations.....	53-58

AMDA/FMDA Disclosure

Registrants for this program understand that medical and scientific knowledge are constantly evolving. The views and treatment modalities of the instructors are their own and may reflect innovations (including off-label or investigational use of medical products) and opinions not universally shared. Every effort has been made to assure the accuracy of the data presented at this program in the context of accepted medical practice. Prior to clinical application, physicians should check specific details such as drug doses and contraindications, off-label uses, or other details in standard sources. The views and treatment modalities of the instructors are not those of the AMDA or FMDA, but are presented in this forum to advance scientific and medical education. Registrants waive any claim against AMDA/FMDA arising from information presented at this program.



1194 OLD DIXIE HIGHWAY, SUITE 4
LAKE PARK, FL 33403

Oct. 19, 2023

Dear Friends and Colleagues:

Welcome to our 32nd Annual Conference! We are very glad you're here. FMDA has witnessed the explosive growth of an organization that is dedicated to serving and representing its members. Membership is strong, and the influence is making more of an impact than ever.

FMDA remains committed to ensuring that its members have access to the latest information, opportunities for educational advancement, and the framework to advocate the positions that will benefit our profession and our patients.

Our annual conference has evolved into a regional gathering with national impact for medical directors, attending physicians, advanced practice nurses, consultant pharmacists, physician assistants, directors of nursing, and administrators working in the PALTC continuum. It provides an opportunity to network and enjoy educational seminars from some of the top names in their areas of expertise.

We are always striving to improve, and welcome your feedback. This is your association and your annual conference. Please take a few minutes to review the information in this syllabus and familiarize yourself with the events, how to earn continuing education credits, and the format of the meeting.

The registration and information desk will be open all day on Thursday, Friday, Saturday, and half of Sunday. FMDA staff members remain available to answer any questions you may have.

This year, we are once again using AMDA's Apex system to process the session evaluations, earn credit for the sessions you attend, and issue the certificates of attendance. This online system applies to all attendees. You will be asked to either login with your AMDA credentials, or you can create a free account. Either scan the QR code on page 33 or visit <https://apex.paltc.org/course/view.php?id=1470>.

We invite you to attend a Urovant-grant supported CME dinner presentation on Thursday from 5:50 to 6:50 p.m. There are also product theater lunch programs on Friday (sponsored by **Neurocrine**) and Saturday (sponsored by **Otsuka America Pharmaceutical, Inc.**, and **Lundbeck**).

Join us on Friday at 5:25 p.m. at the official Welcome Reception in the exhibit hall, sponsored by **VITAS Health Care** – the 32nd Annual Diamond Sponsor. While at the Trade Show, take the opportunity to see some of the latest products and innovations by visiting each of the companies that help make this conference possible.

Make sure your Trade Show Card is initialed by each of the companies represented to be eligible to win some of the door prizes to be awarded after the last session on Sunday. Drop your completed card into the box before you leave the exhibit hall on Saturday. Remember: You must be present at the end of the conference to win!

Also, our thanks go to Silver Grande Sponsor – **Sumitomo Pharma**, and Bronze Grande Sponsors – **Optum** and **Teva**.

Be sure to join us for the President's Wine & Cheese Reception – sponsored by **Optum** – on Saturday from 6:45 to 7:55 p.m. Spend time with your friends and colleagues at this fun and relaxed event. Then celebrate as we announce the winner of this year's **Robert Kaplan Quality Champion Award**. Our thanks to **Omnicare/CVS** for supporting this year's award program.

Again, welcome to **Best Care Practices in the Post-Acute and Long-Term Care Continuum 2023**. This year's program is outstanding, so we hope you enjoy yourselves! Congratulations to the Education Committee and FMDA staff. They have put a lot of effort into making this conference interesting, educational, and fun.

We hope you find the conference to be a valuable asset to your professional life.

Executive Committee, FMDA – The Florida Society for Post-Acute and Long-Term Care Medicine

President: Diane Sanders-Cepeda, DO, CMD

Chair: Rhonda L. Randall, DO

Vice President/President-Elect: Shark Bird, MD, CMD, CWSP

Immediate Past-President: Angel Tafur, MD, CMD

Secretary/Treasurer: Elizabeth Hames, MD, CMD



Best Care Practices in the Post-Acute and Long-Term Care Continuum 2023
Joint Provided by FMDA & AMDA





Welcome to Best Care Practices in the Post-Acute and Long-Term Care Continuum 2023!

The Florida Chapters of GAPNA would like to extend a warm welcome to all the Advanced Practice Nurses attending this year's *Best Care Practices in the Post-Acute and Long-Term Care Continuum 2023* conference.

FMDA, in collaboration with FL-GAPNA, Gulf Coast GAPNA, and other professional associations, has put together a well-rounded curriculum for all of us caring for the older adult in PALTC. This will be an exciting four days for all those attending.

We, as advanced practice registered nurses, embrace the opportunity to work with FMDA and participate in planning this wonderful conference. Our collaboration with physicians, pharmacists, directors of nursing, and other health care professionals is critical and essential for the betterment of our geriatric patients and loved ones. Our annual participation has provided a great opportunity to enhance knowledge and nurture mutual respect for others working in this arena.

We encourage all advanced practice registered nurses to become involved with both Florida Chapters of GAPNA. Please visit our websites at flgapna.enpnetwork.com as well as fgcgapna.enpnetwork.com and become a member.

Also, please visit www.gapna.org/learning/events/annual-conference/2024-gapna-annual-conference-save-date for GAPNA's next annual conference September 19-21, 2024, in San Antonio, TX.

On behalf of the FLORIDA Chapters of GAPNA, we welcome you!

Sincerely,

Michelle Lewis, DNP, APRN, FNP-C, GNP-C, PMHNP-BC
President, FL-GAPNA

**President**

F. Michael Gloth III, MD,
FACP, AGSF, CMD

President-Elect

Gregory Sullivan, MD, FAPA

Secretary/Treasurer

Bethan A. Roberts, PhD

Immediate Past President

Debra A. Danforth, DNP,
APRN, FAANP

Past President 2nd Position

Ronald T. Garry, M.D FACP
AGSF

Director: Member at Large

Jonathan Appelbaum, MD

Director: Member at Large

Elizabeth Hidlebaugh, MD

Historian

Jonathan Stewart, MD,
DLFAPA, AGSF

Student Council Liaison

Gaurav Kiri, MS-3

Executive Director

Peggy Crowley

Dear FMDA Annual Program Attendees,

The Florida Geriatrics Society is honored to participate once again in FMDA – The Florida Society for Post-Acute and Long-Term Care Medicine’s 32nd Annual Conference. We look forward to seeing many of our FMDA friends and FGS members during this live meeting. We appreciate the opportunity to continue to partner and support FMDA and to participate in Best Care Practices in the Post-Acute and Long-Term Care Continuum 2023. Collaboration among organizations supporting the care of seniors is essential to foster optimal care for older adults in Florida. The importance for health care providers to stay organized has only intensified in our rapidly changing medical professions.

The FGS is pleased to continue to unite and support the efforts of the FMDA organization as we strive together to address the educational and healthcare challenges facing those who seek to provide the highest quality of care for our aging population. The mission of the Florida Geriatrics Society is devoted to improving the quality of life and advancing the health care of older adults through education, research, networking, and improving public awareness of professionals involved with caring for the older adult. We work closely with the American Geriatrics Society and the Health in Aging Foundation to accomplish our mission through interdisciplinary, professional teamwork, educational, public policy, and collaborative efforts. Our work with FMDA is another example of how the FGS is fulfilling that mission and we consider our relationship with FMDA to be one of our most valuable assets.

To learn more about our organization and the benefits of membership, visit our website at www.floridageriatricsociety.org. Please consider joining us for our **2024 Annual Meeting as we celebrate our 35th Anniversary of Leadership in Geriatrics**. We look forward to seeing you there.

F. Michael Gloth, III, MD, FACP, AGSF, CMD

President, Florida Geriatrics Society



P. O. Box 1403
Land O Lakes, FL 34639
www.FloridaGeriatricsSociety.org
813-996-0322



Oct. 19, 2023

Dear Colleagues,

Welcome to Best Care Practices in the Post-Acute & Long-Term Care Continuum 2023 – FMDA's 32nd Annual Conference!

The National Association of Directors of Nursing (NADONA) is very proud to be involved with this wonderful conference. Planning and implementing this conference program with partners who practice together daily has been both exciting and rewarding! Membership in this hard-working Education Committee (which meets on Sunday afternoons) affords everyone the equal opportunity to submit topics, speakers, and objectives in planning the programs. Working as a cohesive team, with great leadership, allows us to provide exceptional programming.

NADONA is once again honored to work with Ian Cordes, FMDA – The Florida Society for Post-Acute and Long-Term Care Medicine, AMDA – The Society for Post-Acute and Long-Term Care Medicine, Florida Geriatrics Society, FADONA, and the Florida Chapters of GAPNA on this remarkable program!

We can only hope that after attending this program, you will gain as much knowledge and respect for each other as we did through working with these organizations.

Enjoy the speakers, meet new friends, rekindle seasoned relationships, and recharge your batteries with all the new and exciting ideas you gain while attending this program!

On behalf of Robin Arnicar, NADONA President, and the NADONA Board of Directors,

Sherrie Dornberger, RN, CDP, CADDCT, GDCN, CDONA, FACDONA
NADONA Executive Director

www.nadona.org

800-222-0539

VITAS Can Be Your Partner for Excellence in Long-Term Care

When you partner with VITAS® Healthcare, your residents gain access to our dedicated interdisciplinary care teams who are equipped with the expertise to provide tailored care. Your residents deserve nothing but the best, and VITAS delivers excellence at every step of the way.



Around-the-Clock Clinical Support

We offer 24/7/365 clinical care support, ensuring that physicians, hospitals, and long-term care communities always have access to our expertise. When your team needs us, we're available, ready to provide the care your residents require.



Complex Hospice Modalities

VITAS offers complex modalities to address the unique needs of your residents. We understand that every patient is different, and our customized approach ensures that care is precisely tailored to them.



Advance Care Planning




We're not just caregivers; we're partners in achieving patient-centered care goals. Our expertise extends to advance care planning, goal-concordant patient care, and the meticulous tracking of industry metrics.

Together, we'll ensure that your residents receive the care they deserve, in line with their wishes and your facility's high standards.

Give us a call and partner with VITAS today.

VITAS®
Healthcare

800.93.VITAS | VITAS.com

   | Since 1980

Annual Program Description

This program is designed to provide a review and update of major geriatric diseases, illnesses, and risks found in nursing home patients, residents of assisted living facilities, those under hospice care, and seniors living at home. Topics covered this year include: ▲ Advance Care Planning to End-of-Life ▲ Best Practices in Palliative Care and Hospice Services ▲ Cardiac Amyloidosis and Heart Failure Exacerbation Among Older Adults ▲ Case-Based Guidance on Topical Wound Treatments ▲ C. Difficile Muy Difícil – 2023 ▲ Clinical Team Assessment of Difficult Cases ▲ Diversity, Equity, and Inclusion ▲ Enhancing Heart & Brain Health in PALTC ▲ Geriatric Literature Review ▲ Legal Update for Health Care Practitioners ▲ Medicare Billing & Coding Update ▲ Medication Management and Best Practices in Transitions of Care ▲ National Leaders Forum ▲ National Trends in PALTC ▲ Patient-Directed Doctor's Orders ▲ Psychotropic Stewardship ▲ Public Policy Update ▲ QA&A and QAPI ▲ Rapid Fire Presentations ▲ Red-Eye Rounds: Clinical Quandaries ▲ Regulatory Update ▲ Update on Geriatric Syndromes in LTC.

Target Audience

This conference is designed to educate physicians, advanced practice nurses, senior care pharmacists, consultant pharmacists, physician assistants, directors of nursing in LTC, registered nurses, and long-term care administrators, as well as geriatricians, primary care and home care physicians, physicians considering becoming long-term care medical directors, hospice medical directors, or home care medical directors, and others with an interest in PALTC and its continuum of care. The faculty includes national and regional authorities in the fields of post-acute and long-term care medicine, medical direction, senior care pharmacology, and geriatric medicine.

Annual Program Objectives

Upon completion of the Best Care Practices in the Post-Acute and Long-Term Care Continuum conference, participants should be able to:

1. Discuss the professional challenges facing medical directors, attending physicians, advanced practice nurses, clinical and consultant pharmacists, physician assistants, directors of nursing, and administrators practicing in the continuum.
2. Describe the advances in theoretical and clinical knowledge impacting individuals affected by medical issues in the PALTC continuum.
3. Discuss the current and emerging national issues and public policy efforts of AMDA – The Society for Post-Acute and Long-Term Care Medicine, Gerontological Advanced Practice Nurses Association, and American Health Care Association.
4. Describe examples of evidence-based practice and multidisciplinary approaches to enhance outcomes in various health care settings.
5. List examples of evidence-based practice as it pertains to post-acute and long-term care medicine.



Continuing Education

Oct. 19-22, 2023 ★ Rosen Shingle Creek Orlando ★

EDUCATION COMMITTEE CHAIR/NURSE PLANNER: Michelle A. Lewis, DNP, MSN, ARNP, FNP-BC, GNP-BC

PROGRAM DIRECTOR: Kenya Rivas, MD, FAFAP, CMD; Vice Chair, Education Committee

AMDA LIAISON: Robert Kaplan, MD, FACP, CMD (1948-2023); Past-Chair, ABPLM; Past-President, FMDA

NADONA LIAISON: Sherrie Dornberger, RNC, GDCN, CDONA, FACDONA; Executive Director

FLORIDA CHAPTERS OF GAPNA LIAISON: Michelle Lewis, DNP, MSN, ARNP, FNP-BC, GNP-BC; President, FL-GAPNA

FLORIDA GERIATRICS SOCIETY LIAISON: F. Michael Gloth, MD, FACP, AGSF, CMD; President, FGS

CONSULTANT PHARMACIST LIAISON: Rick Foley, PharmD, CPh, BCGP, FASC; Past-Chair, FL-ASCP

COMMITTEE MEMBERS: Shark Bird, MD, CMD, CWSP; Debra Danforth, DNP, APRN, FAANP; Marcia Gilkes, ARNP; Alfonso Gonzalez-Rodriguez, MD; Elizabeth Hames, DO, CMD; Laura Hardcastle, FNP, PMHNP; Elizabeth Hidlebaugh, MD; Leonard Hock Jr., DO, MACOI, CMD; Kimberly Jackson, PharmD, CPh; Brian Kiedrowski, MD, MBA, CPE; Simone Minto-Pennant, PharmD; Jennifer Moses, DNP, CRNP; Samantha Quigley, PharmD, CPh, BCGP; Jelenna-Marie Rances, PharmD, CPh; Rhonda L. Randall, DO; Bernardo Reyes, MD, CMD, AGSF; Michael Samarkos, PharmD; Diane Sanders-Cepeda, DO, CMD; Niharika Suchak, MBBS, MHS, FACP, AGSF; Angel Tafur, MD, CMD; Lauren Tafur, ARNP; Laurie Workman, ARNP, DNS; Brianna Wynne, MD

EDUCATION COMMITTEE DISCLOSURES

Shark Bird, MD, CMD, CWSP.	Advisory Board: Ball State University Full-time/Part-time Employee: Vohra Would Physicians
Rick Foley, PharmD, CPh, BCGP, FASC.	Full-time/Part-time Employee: CVS/Omnicare
Elizabeth Hames, DO, CMD.	Full-time/Part-time Employee: UnitedHealth Group/Optum
Kenya Rivas, MD, CMD.	Stock Shareholder (exclude diversified funds); Full-time/Part-time Employee: Optum/UnitedHealth Group
Diane Sanders-Cepeda, DO, CMD.	Full-time/Part-time Employee: UnitedHealth Group/UHC Retiree Solutions M&R

Please note that in addition to being presented with disclosure information about faculty, the same disclosure information is required of all Education Committee members — our planning committee. Where there are no financial interests indicated, the faculty or planning committee member had none to report. In the spirit of full disclosure, no member of this committee is a compensated conference speaker at Best Care Practices in the Post-Acute and Long-Term Care Continuum 2023.

No one with the ability to control content of this activity has a relevant relationship with an ineligible company except those listed above. These relationships have been mitigated.

CERTIFICATES OF ATTENDANCE

In order to claim credit for the sessions you attend, see the instructions on page 33. The session evaluations and the conference evaluation must be completed online before you download your Certificate of Attendance.

CREDIT INFORMATION FOR PHYSICIANS – MDs, DOs, CMDs, PHYSICIAN ASSISTANTS, ADVANCED PRACTICE NURSES, AND FLORIDA LICENSED NURSES AND NURSING HOME ADMINISTRATORS

Credit Statements

AMA PRA Category 1 Credits™ (CME) Accreditation

This activity has been planned and implemented in accordance with the accreditation requirements and policies of the Accreditation Council for Continuing Medical Education (ACCME) through the joint providership of AMDA - The Society for Post-Acute and Long-Term Care Medicine and FMDA – The Florida Society for Post-Acute and Long-Term Care Medicine. AMDA - The Society for Post-Acute and Long-Term Care Medicine is accredited by the ACCME to provide continuing medical education for physicians.

**JOINTLY
PROVIDED BY**



THE SOCIETY
FOR POST-ACUTE AND
LONG-TERM
CARE MEDICINE™

AMA PRA Category 1 Credits™ (CME) Designation

AMDA - The Society for Post-Acute and Long-Term Care Medicine designates this live activity for a maximum of **25.5 AMA PRA Category 1 Credits™**. Physicians should only claim credit commensurate with the extent of their participation in the activity.

ABPLM CMD Credit

This live activity has been pre-approved by the American Board of Post-Acute and Long-Term Care Medicine (ABPLM) for a total of **18 management hours and 8.5 clinical hours** toward certification or recertification as a Certified Medical Director (CMD) in post-acute and long-term care medicine. The CMD program is administered by the ABPLM. Each physician should claim only those hours of credit actually spent on the activity.



PA/NP Language

For Physician Assistants and Nurse Practitioners, these credits have been designated as *AMA PRA Category 1 Credits™* by an ACCME-accredited organization and are applicable to these certifications. This activity satisfies the requirements for .5 Pharmacology Hour for nurse practitioners.

Contact Hours for Advanced Practice Nurses, Nurse Administrators, Florida Licensed Nurses, and Long-Term Care Administrators

This educational program has been approved by the Florida Association Directors of Nursing Administration/LTC – Florida Department of Health, Division of Medical Quality Assurance (Florida Board of Nursing/Florida Board of Nursing Home Administrator CE Broker Provider ID Number 50-682) for a total of **26** contact hours of continuing education and **25** maximum participant hours CE Broker Tracking #20-1097958.

Physicians

- This program has been approved by the Florida Board of Medicine, Florida Board of Osteopathic Medicine, and Florida Physician Assistants CE Broker Program Tracking #20-1094226.
- American Osteopathic Association Credit: AOA recognizes this activity for *AMA PRA Category 1 Credit™* as *AOA Category 2 Credit*.

PHARMACIST CONTINUING EDUCATION

General Pharmacist Credit: The Association for Medication Education (AME) is accredited by the Accreditation Council for Pharmacy Education as a provider of continuing pharmacy education. This knowledge-based program has been approved for **24.5** contact hours. **Session 108 is NOT approved for pharmacist CE.** Each individual session of this conference has received a separate Universal Activity Number (UAN). For details related to learning objectives, speakers, and UAN numbers for each session, go to www.bestcarepractices.org. ACPE credit is for pharmacists only.



This activity has been approved by the Florida Board of Pharmacy CE Broker Program Tracking # #20-1114062.

Universal Activity Numbers

Thursday	Friday	Saturday	Sunday
101 0854-9999-23-039-L04-P	107 0854-9999-23-044-L04-P	113 0854-9999-23-049-L04-P	120 0854-9999-23-056-L04-P
102 0854-9999-23-040-L04-P	109 0854-9999-23-045-L04-P	114 0854-9999-23-050-L04-P	121 0854-9999-23-057-L04-P
103 0854-9999-23-041-L04-P	110 0854-9999-23-046-L04-P	115 0854-9999-23-051-L04-P	122 0854-9999-23-058-L01-P
104 0854-9999-23-042-L01-P	111 0854-9999-23-047-L04-P	116 0854-9999-23-052-L04-P	123 0854-9999-23-059-L01-P
105 0854-9999-23-043-L04-P	112 0854-9999-23-048-L01-P	117 0854-9999-23-053-L04-P	124 0854-9999-23-060-L01-P
		118 0854-9999-23-054-L04-P	
		119 0854-9999-23-055-L04-P	

Florida Consultant Recertification: This activity has been approved by the Florida Board of Pharmacy. **CE Broker Program Tracking Number 20-1113392.** Sessions #106, 108, 112, 119, and 122 are not included in any of the blocks*. For additional information, please see the designated approved blocks in the Pharmacist CPE Information in your envelope.

*Block sessions run consecutively so you must attend every session, even if it runs into the following day.



Call for Presentations

The Education Committee for Best Care Practices in the PALTC invites you to submit speaker presentation proposals and abstracts for the 2024 annual conference.

Submission Site Opens: **Dec. 30, 2023**
Speaker Presentation Submission Deadline:
Feb. 17, 2024

See page 52 for additional information or contact the FMDA business office at (561) 689-6321.



To access the complimentary
Wireless Internet in the
Conference Center's Meeting Rooms:

Select: **Convention Wireless**
and the PIN code will be **FMDA23**.

Continuing Education Credits Calculated by Profession

	<u>Session Title/No.</u>	<u>MD/DO/NP/PA/CMD</u>	<u>ACPE</u>	<u>NP/RN*</u>	<u>NHA</u>
Thursday	101 The Journey from Advance Care Planning to End-of-Life WORKSHOP	(3 hours)	MANAGEMENT	3.0	3.0
	102 Advance Care Planning with Patient-Directed Doctor's Orders	(1 hour)	MANAGEMENT	1.0	1.0
	103 Panel Discussion: Best Practices in Palliative Care and Hospice Services	(1 hour)	MANAGEMENT	1.0	1.0
	104 Cardiac Amyloidosis As a Reason for Heart Failure Exacerbation Among Older Adults: The Impact of its Increasing Diagnosis in PALTC	(1 hour)	CLINICAL	1.0	1.0
	105 Diversity, Equity, and Inclusion – In Pursuit of Belonging	(1 hour)	MANAGEMENT	1.0	1.0
Friday	107 Keynote Address	(1 hour)	MANAGEMENT	1.0	1.0
	108 Legal Update for Practitioners	(1 hour)	MANAGEMENT	0	1.0
	109 Psychotropic Stewardship – Phase 3 Guidance and Beyond	(1 hour)	CLINICAL	1.0	1.0
	110 Script for Filling the Gap: The Importance of Medication Management and Best Practices in Transitions of Care	(1 hour)	MANAGEMENT	1.0	1.0
	111 The Sum Is Greater Than the Parts: Mitigating the Risk – Utilization Review Results of a 1-Year SNF Clinical Team Assessment of Difficult Cases	(1 hour)	MANAGEMENT	1.0	1.0
Saturday	112 An Update on Geriatric Syndromes in LTC	(1 hour)	CLINICAL	1.0	1.0
	113 National Leaders Forum	(1.5 hours)	MANAGEMENT	1.5	1.5
	114 National Trends in PALTC	(1 hour)	MANAGEMENT	1.0	1.0
	115 AMDA Public Policy Update	(1 hour)	MANAGEMENT	1.0	1.0
	116 STATE AHCA Regulatory Update	(1 hour)	MANAGEMENT	1.0	1.0
Sunday	117 QA&A and QAPI: Driving the Call to Action	(1.5 hours)	MANAGEMENT	1.5	1.5
	118 Medicare Billing & Coding Update	(1 hour)	MANAGEMENT	1.0	1.0
	119 From Novice to Expert: Rapid Fire Presentations	(1 hour)	MANAGEMENT	1.0	1.0
	120 Red-Eye Rounds: PALTC & Geriatrics Clinical Quandaries	(1 hour)	CLINICAL	1.0	1.0
	121 Geriatric Literature Review	(1.5 hours)	CLINICAL	1.5	1.5
Sunday	122 Enhancing Heart and Brain Health in PALTC	(1 hour)	CLINICAL	1.0	1.0
	123 C. Difficile Muy Difícil – 2023	(1 hour)	CLINICAL	1.0	1.0
	124 OMG...What Can I Put on That? Case-Based Practical Guidance on Topical Wound Treatments	(1 hour)	CLINICAL	1.0	1.0
<u>Total CME/CE hours approved:</u>		25.5		24.5	25.5
<u>Maximum CME/CE hours to be earned:</u>		24.5		24.5	24.5
May be subject to rounding.					

FMDA's 32nd Annual Conference Faculty

Alex Bardakh, MPP, CAE

Alex Bardakh is the senior director of advocacy and strategic partnerships for AMDA, working for the society's extensive public policy agenda through advocacy in Congress and numerous federal agencies. He is a thought leader in the field and represents the organization with a variety of coalitions and industry partners. A graduate of the University of Maryland Baltimore County with a master's degree in public and legal policy, Mr. Bardakh has more than 15 years of experience in specialty society executive leadership focusing on advocacy and strategic growth of organizations. He is a certified association executive through the American Society for Association Executives, has a certificate in nonprofit financial management, and has been a recognized speaker throughout the country.

Shark Bird, MD, CMD, CWSP

Shark Bird is a certified wound specialist physician through the American Board of Wound Management and a certified medical director with AMDA. He currently serves as chief medical officer for the nation's largest provider of wound physicians in the post-acute setting and spearheaded the writing and development of its yearlong fellowship program.

Dr. Bird attended graduate school at Ball State University in Muncie, IN, and medical school at Marshall University School of Medicine in Huntington, WV. He completed his residency in family medicine with West Virginia University/CAMC in Charleston, WV, before beginning his solo practice in rural West Virginia. He serves on the Advisory Council for the College of Health at Ball State University and as an adjunct faculty for Nova Southeastern University in Florida.

With a longstanding interest in geriatric medicine and international tropical medicine following years of mission work in West Africa, Dr. Bird began a full-time wound care career in 2004. He is the author of numerous publications and presents at conferences throughout the U.S. and abroad, educating clinicians on wound care in the post-acute space.

Bertha Carrion, ARNP, DNP

Bertha Carrion is a clinical service manager for Optum Care in the Miami-Dade and Broward County area, where she leads a team of 13 APRNs and manages more than 750 nursing home residents who are enrolled in UnitedHealthcare Medicare Advantage Special Needs Plans.

She graduated as a BSN-RN in 2007 from Barry University and worked in the hospital setting for six years in multiple areas, gaining expertise in treating acute issues in the adult and geriatric population. In 2011, she graduated as a family APRN from Barry University and began her work with geriatrics populations in their private homes and in the LTCA setting. In 2017 she obtained her DNP degree from the University of Alabama in Huntsville.

As clinical services manager with Optum, she provides specialized care for complex condition populations by focusing on evidence-based practices to improve the quality of life of the members living in the nursing home setting. She also dedicates her efforts to train, empower, and lead new and existing APRNs so they can provide the best quality care for their members. Bertha is dedicated to being a voice for her patients by advocating for their wellness. She thrives in delivering the best care that is available to the people she serves.

Rachel Cathey, BS

Rachel is a third-year medical student at the Florida State University College of Medicine. She is currently on her clinical rotations at the FSU College of Medicine Tallahassee Regional Medical Center.

Gregory A. Chaires, Esq.

Gregory Chaires is a board-certified health law attorney with the law firm of Chaires, Brooderson & Guerrero, P.L., in Altamonte Springs, and has been practicing health care law since 1993. His practice focuses on business, regulatory, and transactional matters relating to health care. He represents physicians and other health care practitioners in defense of professional licensing actions before state and federal health care regulatory boards and agencies. He also represents healthcare providers on issues concerning contractual and transactional matters, mergers and acquisitions, governmental investigations, compliance programs, and regulatory compliance involving the self-referral and anti-kickback statutes.

Mr. Chaires is a former Florida assistant attorney general, serving as counsel and legal advisor to the Florida Boards of Medicine, Nursing, Dentistry, Opticianry, the Advisory Council on Respiratory Care, and the Occupational Therapy Council. He also served as legal advisor to the Medicaid Fraud Control Unit for the Southern District of Florida for the Office of the Attorney General.

Chair of the Health Law Section of the Florida Bar from 2018 to 2019, he was a member of the Business Law and Administrative Law Sections of the Florida Bar as well as a member of the American Health Lawyers Association and Health Care Compliance Association. He has served in numerous capacities with the Health Law Section of the Florida Bar and also served on the editorial board for the University of Florida and Florida State University for various healthcare publications.

He has been selected to Best Lawyers in America 2008 through 2023 in the field of health law, a member of Florida Super Lawyers 2008 through 2023 in health care law, and best lawyers in Orlando 2008 through 2023 in health care law, and multiple times as a member of Florida Trend's Legal Elite for Health Care Law.

Maria Clyce, PharmD

Maria Clyce is the director of pharmacy for Catholic Health Services of South Florida, working with patients who are living with comorbidities requiring multiple regimens of medication. By reviewing a patient's medication regimen, she is able to uncover opportunities for savings and provide better patient safety and care while decreasing nursing time and burden.

Dr. Clyce was a long-term care pharmacist at Omnicare/CVS, working with patient populations that are extremely complex. With knowledge in both the pharmacological and clinical spaces, she acted as a patient advocate to ensure patients are prescribed the safest medication, specifically so certain regimens don't interfere with the efficacy of other medications being prescribed; are prescribed the appropriate drug therapy for their specific condition; and are not prescribed unnecessary medications.

As a retail pharmacy manager at Publix, she reviewed prescriptions and compounds and dispensed prescribed drugs according to regulatory requirements in a retail environment. She provided education to her patients on medications, drug safety, and potential interactions; conducted drug utilization reviews; and interacted with physicians and nurses to improve patient safety, compliance, and outcomes.

Dr. Clyce received her Doctor of Pharmacy degree in 2001 from Nova Southeastern University. She is a licensed pharmacist in Florida and South Carolina and is separately licensed in Florida as a consultant pharmacist.

Chuck Crecelius, MD, PhD, FACP, CMD

Charles Crecelius is medical director for Delmar Gardens Enterprises in St. Louis, MO. He recently retired from being medical director for post-acute care services for BJC Medical Group, an over-600 provider, 12 associated hospital multispecialty group in the Greater St. Louis area.

Dr. Crecelius is also an associate clinical professor of internal medicine and geriatrics at Washington University School of Medicine. He helped found the St. Louis Post-Acute and Long-Term Care Roundtable, which brings together nursing homes, hospital systems, and other stakeholders to improve the quality and transitions of care of nursing home residents in a service area of over 3 million persons. A past-president of AMDA, he was the 2019 Medical Director of the Year. He remains an advisor to the AMA Relative Value Update Committee, which determines values for provider services.

Lisa Dusch, MSN, APRN, ACHPN

Lisa Dusch is the vice president of clinical services for the Personal Care Medical Associates Palliative division, overseeing palliative services provided by The Rose Program in four states. She has experience caring for the frail and chronically ill population since 2007 in many different settings. Her dream is that every chronically ill patient will receive the palliative care they deserve and, before making a plan of care, every medical provider will listen to the patient for a few minutes to understand what the patient's goals of care are.

Rick Foley, PharmD, CPh, BCGP, FASCP

Rick Foley is a senior clinical manager with CVS/Omnicare with over 30 years' experience in the post-acute long-term care market. He received his PharmD degree from the University of Florida College of Pharmacy in 1999. Board certified in geriatrics, he is a fellow of the American Society of Consultant Pharmacists.

Dr. Foley served three terms on the Florida Medicaid P&T Committee. He was a clinical professor of geriatrics at the University of Florida College of Pharmacy for eight years. He served on the Board of Directors for FMDA from 2016 to 2021 and, in 2021, was the first pharmacist recipient of the FMDA Quality Champion award.

David Gifford, MD, MPH

David Gifford is a geriatrician who serves as chief medical officer at the American Health Care Association (AHCA), where he helped create the Quality Department, which assists providers in their quality improvement efforts and works with administration officials on regulations and policies impacting the profession. He also established the Center for Health Policy and evaluation in long-term care at AHCA and oversees the Long-Term Care Data Cooperative, a National Institute of Aging-funded initiative to link EMR data from nursing homes to help improve care.

Dr. Gifford serves on the board of the Baldrige Foundation and chairs the U.S. Department of Veteran's Affairs Geriatric and Gerontology Advisory Committee, a congressional chartered committee to advise the U.S. Secretary of Veteran's Affairs on geriatric services for veterans.

He is a former director of the Rhode Island State Department of Health from 2005 to 2011, where he received the National Governor's Distinguished Service Award for State Officials for his management of the H1N1 influenza outbreak. Prior to that, he served as chief medical officer for Quality Partners of Rhode Island, where he directed the CMS national nursing home-based quality improvement effort. He holds a faculty appointment at Brown University Medical School and

School of Public Health and served as medical director in several nursing homes in Rhode Island. He received his medical degree from Case Western Reserve University and conducted his geriatric fellowship at UCLA, where he also earned his master's in public health while a Robert Wood Johnson Clinical Scholar.

Elizabeth Hidlebaugh, MD

Elizabeth Hidlebaugh joined AMDG Naples 100 in 2021 after completing a geriatrics fellowship at Duke University School of Medicine. Her passion for geriatrics blossomed in college when she co-authored her first paper in *The Journal of Gerontology & Geriatric Research*. She completed her internal medicine residency at Florida Atlantic University, where she solidified her geriatrics focus as a major contributor to a geriatrics screening book chapter in *Primary Care: Clinics in Office Practice-Prevention and Screening*. Dr. Hidlebaugh has served on multiple committees in the American Geriatrics Society and contributed to national geriatric board review preparation materials. Her efforts toward quality improvement led to advancements in her primary care clinic related to polypharmacy in older adults.

She was the recipient of the Golden Stethoscope award, Outstanding Clinic Resident, Health Fair Outreach award, and American College of Physicians Florida Chapter Outstanding Florida Atlantic University Resident award. During her fellowship in geriatrics at Duke, she presented research projects at the American Geriatrics Society and AMDA – The Society for Post-Acute and Long-Term Care Medicine national meetings.

Dr. Hidlebaugh continues to be a champion for prevention and screening efforts in older adults, the reduction of polypharmacy and adverse effects of medications, fall prevention, and establishing clear health goals and preferences for seniors. Her practice focuses on functional survival and the preservation of quality of life in her older adult patients.

Her certifications include internal medicine and geriatrics. Dr. Hidlebaugh serves as an attending physician at the NCH and Physician Regional hospital systems in Collier County, where she follows her patients when hospitalized. In addition to her national medical society memberships, she is a lifetime member of the Florida Geriatrics Society and FMDA.

Leonard R. Hock Jr., DO, MACOI, CMD

Leonard Hock is a palliative consultant in Orlando with a focus on geriatrics and end-of-life care. He is board certified in internal medicine and hospice/palliative care and a certified medical director of long-term care facilities. A member of AMDA since 1996, he has been active in the organization at both local and national levels, including member of the Board of Directors from 2008 to 2010 and chair of the National Membership Committee.

Dr. Hock's interest in hospice/palliative care resulted in the development of a palliative case management model for acute care hospitals. This model was implemented in Research Medical Center in Kansas City in 2008 and has proven to be successful in decreasing the length of stay and acute care costs, while increasing the comfort measures for the end-of-life patient and support to family members. During his medical career in Kansas City, Dr. Hock was the health care reporter for the FOX 4 Television News. For 13 years he was seen daily on "House Calls" by thousands of viewers who watched him speak on current and pertinent health topics. He continues to be a frequent local, regional, and national presenter on medical, scientific, and cultural issues.

After serving his country in Vietnam as an Army medic, he graduated from the Kansas City College of Osteopathic Medicine in 1976 and completed his internship in Dallas and internal medicine residency in Kansas City. In June 2009, Dr. Hock was elected to the Gillum Society of Master Fellows, the highest honor awarded by the American College of Osteopathic Internists for outstanding contribution and service in his profession. Dr. Hock's energy and interest is in medical direction and the improvement in patient care through active physician leadership.

Axel Enri Martinez Irizarry, MD, CMD

Axel Enri Martinez Irizarry graduated with honors from the University of Puerto Rico School of Medicine in San Juan in 2004. He is board certified in medical direction, obesity, hospice medical director, hospice and palliative medicine, geriatrics, and family medicine. He is currently medical director at Windsor Health and Rehabilitation Center, medical director at Hospice of Marion County, and president of Intelligence Health Group, Inc.

Gregory James, DO, MPH, CMD

Gregory James is the national medical director for Affordability and the Florida Market Medical with Optum, Senior Community Care. He works with the clinical teams that collaborate with the independent living, assisted living, and post-acute and long-term care nursing homes for residents who are enrolled in UnitedHealthcare Medicare Advantage Special Needs Plans.

Dr. James is chair of the American Osteopathic Board of Family Physicians. A distinguished fellow of the National American College of Osteopathic Family Physicians (ACOF), he has been selected as its National Educator of the Year as well as Physician of the Year by the Florida Osteopathic Medical Association (FOMA), the Florida Society of the ACOF, and the Pinellas County Osteopathic Medical Society (PCOMS). He is also a past-president of these three organizations. He received Lifetime Achievement awards from PCOMS and FOMA and has served the Florida delegation to the AOA's House of Delegates for over 20 years.

Dr. James was the family medicine residency director for Sun Coast Hospital for over 10 years and founding director of

the St. Petersburg General Hospital Family Medicine Residency. He was selected for several years in a row as one of the American Osteopathic Association Mentors of the Year at its Annual House of Delegates and voted Instructor of the Year for the entire Sun Coast Hospital Medical Education Program.

Dr. James received his Doctor of Osteopathic Medicine and his master's degree in public health from Nova Southeastern University in Fort Lauderdale. He completed his residency in family medicine at Sun Coast Hospital in Largo and is board certified in family medicine and geriatrics by the American Osteopathic Board of Family Physicians/American Osteopathic Association. He is also certified by the American Board of Post-Acute and Long-Term Care Medicine.

Brian Kiedrowski, MD, CMD

Brian Kiedrowski has been the chief medical officer at Catholic Health Services since December 2019, leading all clinical operations of the non-acute continuum. Working with a medical staff of over 400 physicians and clinicians, he leads program growth and development, integrating health systems, coordination of patient care, technology acquisition and implementation, process improvement, and regulatory compliance. He works closely with the executive team to ensure a clinical presence in management decisions to build sustainable organizational improvement by delivering excellent patient care.

Dr. Kiedrowski joined the organization with a rich background in internal medicine, geriatrics, and palliative care. He is board certified in multiple specialties and a certified physician executive. He has held prominent physician leadership positions in our community, most recently as chief medical officer at Miami Jewish Health Systems for 10 years and, prior to that engagement, as vice president and medical director for Catholic Hospice. Throughout his career, he has held medical director posts in other skilled nursing, assisted living, and retirement communities.

Jennifer L. Kim, DNP, GNP-BC, GS-C, FNAP, FAANP

Jennifer Kim is a certified gerontological nurse practitioner and professor of nursing at Vanderbilt University School of Nursing, where she teaches in the adult-gerontology primary care nurse practitioner program. She maintains a clinical practice in a post-acute and long-term care setting and is the principal investigator of a National Institutes of Health-funded deprescribing clinical trial in the assisted-living facility setting. Dr. Kim is the immediate president of the Gerontological Advanced Practice Nurses Association.

Jen Lawrence, MSN, MBA, NHA, RN

Jen Lawrence has devoted an almost 30-year career to serving our geriatric population, from certified nursing assistant, licensed practical nurse, master's-prepared registered nurse, and licensed nursing home administrator. She holds a dual master's degree in business administration and nursing.

Jen's experience spans all geriatric continuums of care, with positions including risk manager, director of nursing, regional nurse, nursing home administrator, assisted living administrator, regional director of operations, vice president of clinical services, and chief nursing officer. With extensive experience in Florida and other states, she is focused on positive patient experiences and outcomes, citing a strong, compassionate team as the foundation for success. Jen is an active member/presenter with the Florida Health Care Association, serving as vice-chair for the Senior Clinician's Committee as well as an item writer for the NAB exams.

David A. LeVine, MD, CMD

David LeVine is a board-certified geriatrician in private practice with MDVIP and chief medical officer of Menorah Life in St. Petersburg. He has been medical director at Menorah Life's Marion and Joseph Samson 180-bed skilled nursing facility for 33 years. In 2016, he received the national AMDA Medical Director of the Year Award and, in 2022, he received the Quality Champion Award from FMDA for dedication, leadership, engagement, and innovation.

Dr. LeVine has served as a geriatric preceptor for three residency programs in the St. Petersburg area. He is also a regular speaker for University at Sea, with an upcoming lecture tour cruising to Israel, Egypt, Turkey, and Greece.

Milta Oyola Little, DO, CMD

Milta Oyola Little is an associate professor of geriatric medicine at Duke University. She joined the Duke Division of Geriatrics in 2019 from St. Louis University, where she completed her fellowship training and started her academic career. She has extensive experience in post-acute and long-term care, including serving in St. Louis as attending physician in five skilled nursing facilities and as medical director for three nursing homes, an assisted living, a home care agency, and a hospice agency. In her current role, she is the facility medical director for The Forest at Duke Continuing Care Retirement Community and the North Carolina state medical director for Longevity Health Plan iSNP.

Dr. Little is the current president of AMDA. Her primary scholarly interests are interprofessional health education, deprescribing initiatives, and implementation of dementia-friendly programs across settings of care.

Mary Lomberk, PharmD, BCACP, CPh

Mary Lomberk is a transitions of care clinical pharmacist with Baycare Health System in Tampa. A graduate of Wingate University School of Pharmacy, she completed her PGY1 residency training at Novant Health in Winston Salem, NC, focusing on ambulatory care and population health. She is a board-certified ambulatory care pharmacist and consultant pharmacist who has helped develop and expand the transitions of care program and ambulatory care pharmacy presence within Baycare from six pharmacists to more than 30 pharmacists since joining the health system in 2016. In her current role, Dr. Lomberk provides continuity of care for hospitalized patients by working with an interdisciplinary team to resolve medication errors, promote patient education, and reduce hospital readmissions.

She was recognized at the 2019 Baycare's Quality Sharing Day for a remarkable patient story and has been a guest speaker for Baycare's HealthChat Podcast. She also serves as a Pharmacist Advisory Committee member for the National Transitions of Care Coalition and board member for Florida's Association for Medication Education. With a passion for mentoring, she precepts students and residents and serves as a University of Florida mentor and resident research advisor. Dr. Lomberk opened her own pharmacy consulting service, Call The PharmD, in 2022, assisting patients and caregivers in their health journey by providing individualized medication review with the goal to ensure medications work for the patient, not against them.

Janet Mackenzie, MD

Janet Mackenzie is chief medical officer for Vohra Wound Physicians. Prior to joining the group in 2013, she practiced plastic surgery and wound care for many years in a private practice setting. After obtaining a master's degree in education, she completed her medical education at the University of Pennsylvania Perelman School of Medicine. Dr. Mackenzie trained in general surgery at Dartmouth Hitchcock Medical Center and plastic surgery at McGill University. She holds board certification in the American Board of Plastic Surgery, American Board of Wound Management, and American Academy of General Physicians. She also holds a certificate in leadership and management from the Wharton Graduate School of Business.

Simone Minto-Pennant, PharmD, BCPS, CPh

Simone Minto-Pennant received her Doctor of Pharmacy degree from Florida A&M University in 1997 and completed her pharmacy practice residency at AdventHealth Orlando in 1998. She worked as a clinical pharmacist at AdventHealth-East Orlando, where she partnered with the infectious disease team on the development of the Community-Acquired Pneumonia Guideline and IV to PO initiative. Dr. Minto-Pennant served as clinical coordinator of internal medicine and infectious disease for three years, maintaining the hospital's antibiogram and developing therapeutic guidelines.

Dr. Minto-Pennant has been employed at the Orlando VA Healthcare System for over 15 years, where she served as the clinical pharmacy specialist for the VA's long-term care facility for over nine years and then in the Anticoagulation Specialty Clinic. She obtained her pharmacy consultant license in 1998 and has been board certified in pharmacotherapy since 2011. Recently, she established the opening, licensure, and operation of the Lake Baldwin VA Pharmacy under the auspices of the Alwyn C. Cashe State Veteran's Nursing Home. Her practice base includes acute care, home infusion, and long-term care.

Naushira Pandya, MD, CMD, FACP

Naushira Pandya is professor and chair of the Geriatrics Department at Nova Southeastern University Kiran C. Patel College of Osteopathic Medicine and project director of the Geriatrics Workforce Enhancement Program. She directs the Ziff Geriatrics Medicine Clinic at NSUCOM and is a certified medical director and post-acute and long-term medicine practitioner. Dr. Pandya is also the program director of the geriatric medicine fellowship at Aventura Hospital and oversees the training of medical students, residents, and fellows in geriatrics, and is a research mentor for students, residents, and faculty.

She completed her medical training at University College Hospital in London, her internal medicine residency in London and at Maricopa Medical Center in Phoenix, and her fellowship in endocrinology and metabolism and geriatrics at the University of Michigan. She is board-certified in internal medicine, geriatrics, endocrinology and metabolism.

On a state and national level, Dr. Pandya is past-president of AMDA, past-chair of the Clinical Practice Committee, an active member of the Clinical Practice Steering Committee, and board president of the Broward County Area Agency on Aging. She has participated in the development of multiple clinical practice guidelines and position statements on diabetes management and osteoporosis and fracture prevention.

Dr. Pandya is a recognized authority and a national and international speaker in the area of management of diabetes in the elderly. She has published in this field and her other research interests include anemia, pituitary dysfunction, and frailty. She also holds the distinction of being a Fulbright Senior Specialist Scholar in geriatrics in Slovakia in 2009.

Rhonda Randall, DO

Rhonda L. Randall is the chief medical officer of UnitedHealthcare Employer & Individual, the nation's largest business serving the health coverage and well-being needs of nearly 28 million Americans. Dr. Randall collaborates with U.S. employers who are looking for quality, cost-effective, long-term solutions to health benefits for their employees and retirees. She also leads the clinical strategy development for these businesses to improve quality outcomes, ensure affordability, and improve health and well-being.

Since 2003, she has held clinical leadership roles in many of the enterprise's businesses, including care delivery, Medicaid Long-Term Care, Medicare Special Needs Plans, and Medicare Supplement. Following the 2003 passage of the Medicare Modernization Act that created the Part D prescription drug program, Dr. Randall was instrumental in developing UnitedHealthcare's first Part D plans. In 2008, she transitioned to UnitedHealthcare Medicare & Retirement, serving as the first regional chief medical officer for the Northeast, later concurrently as vice president and national medical director of medical management as well as deputy chief medical officer of Evercare Hospice and Palliative Care. From 2010 to 2013 she served as chief medical officer for Medicare & Retirement and then as chief medical officer for UHC's Retiree Solutions and later National Accounts. Dr. Randall's leadership enabled the business to deliver unmatched clinical quality, facilitating market leadership in Group Medicare Advantage and achieving impressive 5 Star ratings for the business' national PPO plans.

A fellowship-trained geriatrician, she is board certified in family practice and osteopathic manipulative medicine. Her background includes years of practice in hospice and palliative medicine. Dr. Randall earned her medical degree from the Philadelphia College of Osteopathic Medicine and completed her internship, residency, chief residency, and fellowship at Florida Hospital in Orlando. She has served as volunteer clinical faculty in geriatrics for Florida Hospital's residency program and Florida State University College of Medicine. She has published papers on stroke, Alzheimer's disease, polypharmacy, and normal pressure hydrocephalus. She is a two-time recipient of UnitedHealthcare's innovation awards, some of the business' highest honors, for her leadership in disaster planning and a model of care for people with advanced illness and end-of-life needs. She has been a champion for Florida's frail elders in the public policy arena, working with policymakers to expand long-term care home- and community-based services. Dr. Randall has served on the First Coast Carrier Advisory Committee for Medicare Local Coverage Determinations and collaborated with state agencies to update regulations so seniors who are eligible for both Medicare and Medicaid can receive hospice services from the comfort of their homes instead of a nursing home.

Dr. Randall serves on the board of the UnitedHealth Foundation and is a member of the Scientific Advisory Board for the America's Health Rankings annual and senior reports. She is the chair of the board and past-president of FMDA and has served as a member of the house of delegates as well as the nominating committee for AMDA.

Kelly Ratanasurakarn, BSN, RN

Kelly Ratanasurakarn has more than 19 years of experience working in the post-acute care industry, with additional experience in acute care and behavioral health. She is a functional expert in multiple electronic health record (EHRs) systems including development, implementation, and analytic reviews.

Michael Samarkos, PharmD, CPh

Michael Samarkos is the regional director of clinical and consultant services with Guardian Pharmacy of Orlando, a long-term care pharmacy servicing nursing home and institutionalized residents throughout the state. He began working in the community setting for Eckerd Drugs then CVS/Pharmacy as a pharmacy manager for multiple locations in the Pinellas County area and transitioned to clinical pharmacy 11 years ago when he joined the Baycare Health System with Morton Plant Hospital. As a clinical pharmacist at Florida Hospital North Pinellas, he has increased his clinical knowledge and practice skills to assist patients in the hospital setting, as well as practitioners with medication selection, dosing guidelines, and clinical medication management.

In 2008, Michael was licensed as a consultant pharmacist and worked independently as a consultant while continuing hospital practice. In the clinical setting, he was a preceptor for third- and fourth-year University of South Florida pharmacy students and continues to work with them in the long-term care setting.

Michael earned his doctorate in pharmacy from Nova Southeastern College of Pharmacy in 1999. A member of the American Society of Consultant Pharmacists, he works daily to expand the role of pharmacists and is especially interested in the pharmacist's role in the transitional care setting.

Diane Sanders-Cepeda, DO, CMD

Diane Sanders-Cepeda is a senior medical director for UnitedHealthcare Retiree Solutions, responsible for clinical strategy, quality improvement, clinical program development, and innovation. She has expertise in behavioral health solutions, social determinants of health integration into clinical models, post-acute and long-term care medical management and system development, and hospice and palliative care models. She works collaboratively with employers and plans sponsor groups nationally to address quality, affordability, and care delivery for their retirees.

Dr. Sanders-Cepeda is a geriatrician and certified medical director who has focused her career on geriatric care across the post-acute and long-term care continuum. She began her career at Nova Southeastern University as an assistant

professor in the Department of Geriatrics. Her passion for program development and the practical application of medical models led her to start her own medical practice focused on geriatric medical care, resource management, and transitions of care across the post-acute and long-term care continuum. As she grew her practice, her expertise in geriatric medicine led her to create an inpatient geriatric care unit at South Florida Hospital, develop palliative care initiatives for home healths and SNFs, and serve in the capacity of physician advisor and medical director for multiple skilled nursing facilities, inpatient units, and hospice groups. Dr. Sanders-Cepeda transitioned into UnitedHealth Group as an Optum medical director for the South Florida market, where she focused on clinical strategic planning, educational initiatives, and clinical development of Optum's advanced practice clinicians.

Dr. Sanders-Cepeda serves on AMDA's Board of Directors, chairs the Online Education Subcommittee, and sits on the Program Planning Subcommittee and Education Committee. On the state level, she remains an active member of FMDA and serves as president of the organization and chair of the Journal Club. She also serves on the Medical Care Advisory Committee for the state of Florida upon appointment in 2019 by the secretary of state and has presented regionally and nationally on a multitude of topics.

Joseph Shega, MD

Joseph Shega is board certified in geriatric and hospice and palliative medicine and maintains an academic appointment at the University of Central Florida as an associate professor of medicine. The first 15 years of his career was in academic medicine at Northwestern University and the University of Chicago doing clinical care, education, and research including National Institutes of Health funding around serious illness and dementia care. For the past 10 years, Dr. Shega has practiced in Central Florida, initially as a regional medical director then as national medical director and more recently as chief medical officer for VITAS Healthcare. In his current role, Dr. Shega has been instrumental in adapting a "mobile first" platform to bring technology to the bedside in patients' homes to improve clinical care through enhanced clinical documentation, medication management, care coordination, and novel interventions such as virtual reality.

Dr. Shega is co-managing editor for Essential Practices in Hospice and Palliative Medicine and has over 50 peer-reviewed publications focusing on the care of persons with serious illness. He works with medical trainees across the state of Florida, including at the University of Central Florida and University of Miami as well as faculty at ACGME-accredited fellowship in hospice and palliative medicine at the University of Central Florida and Naples Community Hospital.

Brian Smith, LNHA

Brian Smith is a seasoned healthcare professional with an inspiring career journey that has seen him rise from a therapy tech to an accomplished chief operating officer. With a passion for improving patient care and a relentless drive to succeed, Brian has consistently demonstrated his commitment to the healthcare industry and his ability to excel in diverse roles. He has been a dedicated long-term care leader for the past 15 years. Following positions as assistant administrator and nursing home administrator, in 2019 Brian transitioned to a regional vice president role overseeing 11 facilities in the state of Florida. In 2022 he was promoted to chief operating officer overseeing 41 skilled nursing facilities throughout the state. Brian's journey from a therapy tech to COO is a testament to his unwavering dedication, work ethic, and commitment to improving healthcare delivery. His ability to combine technical expertise, compassionate care, and leadership has earned him the respect of colleagues throughout his career.

Kimberly R. Smoak, MSH, QIDP

Kimberly Smoak has been with the Agency for Health Care Administration since August 1995. She is the deputy secretary of the Health Care Policy and Oversight Division, which licenses and/or certifies and regulates 37 providers, including hospitals, nursing homes, assisted living facilities, and home health agencies. She is the state survey agency director for Florida and holds a Master of Science in health with the program emphasis in aging studies. She is also a qualified intellectual disability professional.

Kamala Snow, MTPsy, CDP, LSSGB, EOLD

Kamala Snow serves as the manager of spiritual care and end-of-life doula support services at Big Bend Hospice and serves on the National Hospice & Palliative Care Organization's End-of-Life Doula Council, Spiritual Caregivers Community, and Professional Education & Organizational Development Community.

Kamala is certified as a sacred passage end-of-life doula with the Conscious Dying Institute, where she also served as program advisor for U.S. and Canadian programs. An ordained interfaith minister and interspiritual counselor (One Spirit Interfaith), she holds a master's degree in transpersonal psychology and is a certified dementia practitioner and Lean Six Sigma Green Belt. A member of the International End-of-Life Doula Association, Lifespan Doula Association, and Institute for Birth, Breath & Death, she is a certified teacher for Loving, Dying, & Letting Go, a graduate of the Healing the Light Body Energy Medicine School, licensed massage therapist, therapeutic touch practitioner, and aromatherapist.

Kamala is passionate about end-of-life education and is thankful to be a part of the educational and societal changes taking place in the way we experience death. She believes that dying is a spiritual experience with medical implications. She has personally attended many deaths and is grateful to be a part of end-of-life work where she can help to ease fear, give space and expression to end-of-life wishes, and allow for the mystery and miracles around death to unfold. She feels that this work elevates human consciousness by changing the way we see not only death, but life itself.

Mark D. Solomon, BS, MA, NHA

Mark Solomon has a master's degree in counseling/psychology. His long-term care career started in 1992 as an administrator in Chicago. After many years as a nursing home administrator, Mark became a regional manager, corporate compliance officer, and senior vice president, completing 20 years with the same company.

Relocating to Florida in 2014, Mark worked as a social services director and is currently the corporate compliance officer for the Avante Group. He also provides regional support for social services and activity directors at Avante's long-term care facilities.

Niharika Suchak, MBBS, MHS, FACP, AGSF

Niharika Suchak is a clinician-educator and associate professor in the Department of Geriatrics at Florida State University College of Medicine in Tallahassee. She earned her master's in clinical epidemiology at the School of Hygiene and Public Health at Johns Hopkins University and completed her internal medicine residency and geriatric medicine fellowship at Baltimore's Union Memorial Hospital. She is board certified through the American Board of Internal Medicine in internal medicine, geriatric medicine, and hospice and palliative medicine.

Dr. Suchak serves as the director of interprofessional education, education director of geriatrics, faculty lead for the geriatrics rotation for Tallahassee Memorial HealthCare internal medicine residents, course director for the hospice elective, and medical director of FSU TeleHealth practice at FSUCOM. In addition, she serves as the director of medical education and research for Big Bend Hospice in Tallahassee. She previously served as director of Year 1 Clinical Skills at FSUCOM for several years. She has extensive clinical and leadership experience including clinical program development in a multitude of health care environments. She has provided and coordinated patient care in a variety of settings including office, hospital, nursing home, rehabilitation facility, hospice, assisted living, and house calls. She has organized geriatrics consultation programs with sub-specialties such as oncology, surgery, orthopedics, and gynecology.

Dr. Suchak is chair of the Florida Department of Health Alzheimer's Disease Research Grant Advisory Board and co-chair of the American Geriatrics Society Special Interest Group in International Activities. She is a past-president of the Florida Geriatrics Society, current chair of its Education Committee, and member of the FMDA Education Committee. She is a member of the American Board of Internal Medicine Geriatric Medicine Longitudinal Assessment Approval Committee and has previously served as a member of its Geriatric Medicine Board Exam Committee. She is a fellow of the American Geriatrics Society and American College of Physicians. Dr. Suchak has a strong interest in medical education of learners and practicing clinicians of multiple health professions, with expertise in curriculum development, clinical skills, interprofessional education, telehealth, advance care planning, palliative care, and the use of simulation as a tool for medical education. Her teaching experience includes the training of medical students, medical residents, geriatric medicine fellows, students of multiple health professions, and physicians and other healthcare professionals.

With a passion for inclusivity in the workplace, Dr. Suchak is a member of the BBH Diversity and Inclusion Council, FSUCOM Council on Diversity and Inclusion, and the American Medical Women's Association Anti-Racism Committee.

She has been the recipient of many awards including multiple listings in Best Doctors in America. In 2016, she received the Outstanding Senior Faculty Educator Award from the Florida State University College of Medicine. In 2012, she received the Clinician of the Year Award from the American Geriatrics Society. Dr. Suchak has presented regionally, nationally, and internationally on various geriatric medicine, hospice and palliative care, and medical education topics.

David Thimons, DO, CMD

David Thimons has enjoyed a successful medical career in geriatric and palliative medicine specialties. He co-founded Personal Care Medical Associates and the Rose Program, a new palliative medicine consulting service specializing in caring for patients with advanced illness in the senior housing space. His career began in education as a family medicine residency director and director of education for a local health system. He has been involved in Centers for Medicare & Medicaid Services grant work in the post-acute space and was the deputy medical director of Aspire Health, a national home-based palliative medicine company. His career passions include creating innovative models of care to provide more compassionate and ethical care to patients with advanced illnesses across the country. After living through metastatic Ewing's sarcoma with his young daughter, his passion has been redefining the meaning and role of palliative medicine across the country.

Laura Tubbs, RN, MSED, MSN, LNHA, CDP, CQP

Laura Tubbs is an associate professor at the International College of Health Sciences in Cocoa Beach. A seasoned professional in the post-acute care industry for more than 25 years, she has worked as a charge nurse, DON, LNHA, and vice president of clinical. She now teaches mental health/psychiatric nursing to RN students at ICHS and remains passionate about quality care in our healthcare industry.

Jacqueline Vance, RNC, BSN, CDONA/LTC, FADONA, IPBC, CDP, ASCOM, LBBP

Jacqueline Vance is the senior director of clinical innovation and education at Mission Health Communities in Tampa. Ms. Vance has board certifications in gerontological nursing, long-term care director of nursing administration, infection prevention, dementia care, is a Lean Black Belt Six Sigma professional, and has a certificate of mastery in antibiotic

stewardship. She serves as an independent legal nurse consultant, expert witness, and long-term care and geriatric nurse consultant through Vance Consulting Service in Tampa. She is on the board of the Beneficiary and Family Centered Care-Quality Improvement Organization and president of the board of directors for the National Transitions of Care Coalition. A member of several organizations including NADONA and FMDA, she sits on the Agency for Health Care Administration Clinical Practice Committee and Behavioral Health Subcommittee.

She is a national speaker on topics focused on care improvement for the elderly and has authored multiple articles and manuals on that theme, including chapters in *Nursing Home Litigation* and *Nursing Malpractice Third Edition*. She is a 2012 APEX Award of Excellence winner for her blog, “The Real Nurse Jackie.”

Jeanne Y. Wei, MD, PhD

Jeanne Wei is executive director of the Donald W. Reynolds Institute on Aging and chair of the Department of Geriatrics at University of Arkansas for Medical Sciences (UAMS). At the University of Illinois, she earned an MD and a PhD in pharmacology. She completed postdoctoral training in internal medicine at The Johns Hopkins Hospital in Baltimore, where she also completed a clinical and research fellowship in cardiology and served as a fellow at the National Institutes of Health. Wei served as associate professor of medicine and director of the Division of Aging at Harvard Medical School, as well as chief of the Gerontology Division at Beth Israel Deaconess Medical Center in Boston.

Known for her work in the field of aging, Wei has more than 35 years of experience conducting gerontological research, mentoring gerontologic fellows and junior faculty members, as well as developing research and academic programs and initiatives. She has authored more than 180 peer-reviewed publications, six books — including *Aging Well: The Complete Guide to Physical and Emotional Health* (2000) — and more than 70 review articles. She holds six medical-related U.S. patents. Wei’s major research interests include the effects of age on cardiovascular homeostasis, biology of aging, and mechanisms of cardiac and brain dysfunction. She has been the recipient of multiple National Institutes of Health grants and served as a member of many NIH peer review study sections and editorial boards, and as editorial consultant to many scientific journals. She also has served as chair of the Board of Scientific Counselors of the National Institute on Aging and as a member of the National Advisory Council on Aging.

Wei has been recognized as one of the Best Doctors in both Boston and Arkansas and has been nominated to Who’s Who in America. She received the Outstanding Clinical Educator Award from Harvard Medical School in 2000 and the Outstanding Woman Faculty Award from UAMS in 2005. She also received the Red Sash Awards from the UAMS College of Medicine for excellence in teaching. She provides clinical care to patients in the Thomas and Lyon Longevity Clinic at the Reynolds Institute.

David G. Wolinsky, MD, FACC, MASNC

David Wolinsky joined the staff at Cleveland Clinic Florida in 2011. He is presently director of the Cardiac Amyloid Center and section head of nuclear cardiology. Under his leadership, the Amyloid Clinic has become the largest of its kind in the Southeast United States.

He is a graduate of Columbia University, where he received his medical degree. He carried out his postgraduate training and was on the staff at St. Luke’s Hospital in New York City for seven years before joining Albany Associates in Cardiology, where he worked as director of the nuclear cardiology program, which he founded, and served as director of the heart failure and cardiac rehabilitation and wellness programs.

Since 2018, Dr. Wolinsky has been chair of the Health Policy Committee, where he focuses on developing alliances that promote optimal utilization of noninvasive imaging to provide maximal value in the modern healthcare paradigm. He was chair of the task force that developed Refer Wisely, a joint initiative of the American Society of Nuclear Cardiology and the American College of Physicians to provide education regarding the appropriate use of diagnostic imaging with a focus on the appropriate use of myocardial perfusion imaging.

More recently, Dr. Wolinsky has focused much of his clinical work on cardiac amyloidosis. He established a multidisciplinary program for the management of amyloidosis that is managing over 300 patients. He developed the imaging program for cardiac amyloidosis at his institution and has helped multiple nuclear cardiology labs improve the quality of their testing. He has participated in multiple clinical trials and research projects aimed at optimizing the management of patients with cardiac amyloidosis.

Dr. Wolinsky is keenly focused on educating clinicians on the value of early recognition of cardiac amyloidosis and has developed needs assessment tools to help recognize and refer patients with suspected ATTR-CM. He has fostered a cooperative multidisciplinary approach for early diagnosis and management of these patients with hopes to increase quality of life and improve survival.

Laurie Workman, DNP, APRN

Laurie Workman, an advanced practice registered nurse, received her Doctor of Nursing practice from Chatham University in 2017. She has worked for Optum for 13 years, providing care for members in the post-acute and long-term care setting. In 2021, she transitioned to a community setting, providing care to members in their homes.

She currently serves as a member of the FMDA board and Education Committee.



We've Gone Social and So Should You!

Social Media Action Contest: We've gone social! Be sure to "Like" us on Facebook, "Follow" us on Twitter, and "Connect" with us on LinkedIn to stay in the know with all that transpires within FMDA!

Visit any of our social media pages and your likes, follows, comments, photos, and videos will enter you for a chance to win a \$25 gift card on Friday, Saturday, and Sunday during the annual conference.



"And Then What?" Challenge

Be the first to share an idea or pearl used in your practice area from the FMDA 2023 Best Care Practices conference.

Tell us what went well and what did not. First to post will win a gift basket.



Please attend these lunch or dinner programs.

Thursday, Oct. 19, 2023 • 5:50-6:50 p.m. Wekiwa 4

CME DINNER PROGRAM **

***Can We Improve Management of Overactive Bladder in LTC?
Examining the Role of Beta-3 Adrenergic Agonists***

This activity is supported by an educational grant from
Urovant Sciences, Inc.

Friday, Oct. 20, 2023 • 12-1 p.m. Wekiwa 3/4/5

PRODUCT THEATER LUNCH* (NON-CME/CPE/CE)

Recognizing and Treating Tardive Dyskinesia in Long-Term Care
– Sponsored by Neurocrine

Saturday, Oct. 21 • 12:50-1:50 p.m. Butler

PRODUCT THEATER LUNCH* (NON-CME/CPE/CE)

***Agitation Associated with Dementia Due to Alzheimer's Disease:
An Expert Discusses Treatment Considerations
and Current Guidelines***

– Sponsored by Otsuka America Pharmaceutical, Inc.,
and Lundbeck

*CE/CME credit is not offered for these programs.

**See page 27 for CE/CME details.

Thank You!

In Appreciation of our Annual Conference Sponsors

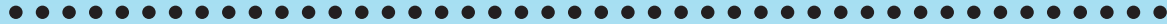
32nd Annual Conference Diamond Sponsor



Silver Grande Sponsor



Bronze Grande Sponsors



Vitas Healthcare
Saturday's Continental
Breakfast



The Rose Program
Name Badge Holders



Vitas Healthcare
Welcome Reception
in the Exhibit Hall



Vitas Healthcare
Refreshment break on
Thursday afternoon



Optum
President's Wine &
Cheese Reception



Optum
Refreshment break
in the Exhibit Hall on
Saturday



GAPNA
20th Anniversary
Poster Presentations



Sumitomo Pharma
Breakfast on Friday



GAPNA
Rapid-Fire
Presentations



Teva
Breakfast on Sunday



Omnicare/CVS
Robert Kaplan
Quality Champion
Award



Vitas Healthcare
Tote Bags



2023 Conference Program

1

Schedule of Events

Thursday, Oct. 19, 2023

OPTIONAL PRE-CONFERENCE

THURSDAY, OCT. 19

7:45 a.m.-6 p.m.

Wekiwa Registration

Registration & Information

8:45 a.m.-12 p.m.

Wekiwa 2

101 The Journey from Advance Care Planning to End-of-Life WORKSHOP

(3 hours)

► Niharika Suchak, MBBS, MHS, FACP, AGSF; *Clinician-Educator and Associate Professor, Department of Geriatrics, Florida State University College of Medicine (FSUCOM);*

Director, Interprofessional Education, FSUCOM; Education Director, Geriatrics, FSUCOM; Director of Medical Education and Research, Big Bend Hospice, Tallahassee, FL



Niharika Suchak

► Kamala Snow, MTPsy, CDP, LSSGB, EOLD; *Ordained Interfaith Minister and Interspiritual Counselor; Manager of Spiritual Care and End-of-Life Doula Support Services, Big Bend Hospice, Tallahassee, FL*



Kamala Snow

Moderator:

Laurie Sheffield Workman, ARNP, DNS; Member, Education Committee

1:15-2:15 p.m.

Wekiwa 2

102 Advance Care Planning with Patient-Directed Doctor's Orders

(1 hour)

► Leonard R. Hock Jr., DO, MACOI, CMD; *Palliative Physician; Past-President, FMDA*



Leonard R. Hock Jr.

Moderator: Elizabeth Hames, DO, CMD; Treasurer, FMDA; Member, Education Committee

2:15-2:45 p.m.

Coffee Break
Sponsored by Vitas Health Care

2:25-3:25 p.m.

Wekiwa 2

103 Panel Discussion: Best Practices in Palliative Care and Hospice Services

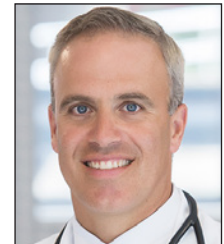
(1 hour)

► Joseph Shega, MD; *Executive Vice President and Chief Medical Officer, VITAS; Associate Professor of Medicine, University of Central Florida; Co-Managing Editor, Essential Practices in Hospice and Palliative Medicine*



Joseph Shega

► David Thimons, MD; *Founder and CEO, The Rose Program*



David Thimons

Moderator: Leonard Hock Jr., DO, MACOI, CMD; Past-President, FMDA; Member, Education Committee

START OF CONFERENCE

3:35-4:35 p.m.

Wekiwa 2

104 Cardiac Amyloidosis As a Reason for Heart Failure Exacerbation Among Older Adults: The Impact of its Increasing Diagnosis in PALTC

(1 hour)

► David G. Wolinsky, MD, FACC, MASNC; *Section Head of Cardiac Amyloid Center, Section Head of Nuclear Cardiology, and Director of Cardiac Rehab, Cleveland Clinic Florida, Weston Hospital, Weston, FL*



David G. Wolinsky

Moderator: Angel Tafur, MD, CMD; Immediate Past-President, FMDA; Member, Education Committee

Self-Parking at Rosen Shingle Creek:

Discounted self-parking is \$18 per vehicle per day (plus sales tax) for all FMDA conference participants. The lot is unattended. You will need to use Mobile Pay.

Mobile Pay Parking



1. To pay for parking, text D15 to 407-337-2891.
2. Tap the link provided in the text message.
3. Enter license plate #.
4. Enter departure time & payment info.



Schedule of Events

2

Thursday, Oct. 19, and Friday, Oct. 20, 2023

4:45-5:45 p.m.

Wekiwa 2

105 Diversity, Equity, and Inclusion – In Pursuit of Belonging (1 hour)

► Diane Sanders-Cepeda, DO, CMD; *Senior Medical Director, UnitedHealthcare; President, FMDA*

Moderator: Simone Minto-Pennant, PharmD; Member, Education Committee



Diane Sanders-Cepeda

5:50-6:50 p.m.

Wekiwa 4

106 CME Dinner Program ** Can We Improve Management of Overactive Bladder in LTC? Examining the Role of Beta-3 Adrenergic Agonists

► Michael J. Kennelly, MD, FPMRS, FACS

** Peer Review Institute (PVI) will provide CME/ NCPD/IPCE/AAPA credit of up to 1.0 AMA PRA Category 1 Credit™ and/or 1.0 contact hour, respectively, to all those eligible to receive credit. All attendees must complete the electronic link form, to obtain credit. A Post-Test/Evaluation must be completed within 60 days of the educational program to obtain credit. A link to the Post-Test/Evaluation will be provided during the educational program or by emailing Meetings@PeerView.com. All credit certifications will be sent via email by PVI.

PVI is jointly accredited by the Accreditation Council for Continuing Medical Education (ACCME), the Accreditation Council for Pharmacy Education (ACPE), and the American Nurses Credentialing Center (ANCC), to provide continuing education for the healthcare team. This activity is supported by an educational grant from Urovant Sciences, Inc.



Michael J. Kennelly

FRIDAY, OCT. 20

8:30 a.m.-5:30 p.m.

Gatlin Registration 1

Registration & Information

7:45-8:30 a.m.

Wekiwa 5



THE FLORIDA SOCIETY
FOR POST-ACUTE AND
LONG-TERM
CARE MEDICINE

Annual Membership Meeting

8:15-9 a.m.

Breakfast sponsored by Sumitomo Pharma.

8:35-8:45 a.m.

Gatlin A1/2

President's Welcome

Diane Sanders-Cepeda, DO, CMD

8:45-9:45 a.m.

Gatlin A1/2

107 Keynote Address (1 hour)

► Leonard R. Hock Jr., DO, MACOI, CMD; *Palliative Physician; Past-President, FMDA*

Moderator: Diane Sanders-Cepeda, DO, CMD; President, FMDA; Member, Education Committee



Leonard R. Hock Jr.

9:50-10:50 a.m.

Gatlin A1/2

108 Legal Update for Practitioners (1 hour)

► Gregory A. Chaires, Esq.; *Chaires, Brooderson & Guerrero, P.L.*

Moderator: Lauren Tafur, ARNP; Editor, Progress Report; Member, Education Committee



Gregory A. Chaires

10:55-11:55 a.m.

Gatlin A1/2

109 Psychotropic Stewardship – Phase 3 Guidance and Beyond (1 hour)

► Rick Foley, PharmD, CPh, BCGP, FASCP; *Senior Manager, Clinical Services LTC, Omnicare*

► Elizabeth Hidlebaugh, MD; *Board-Certified Internist and Geriatrician, AMDG Naples 100 Senior Concierge and Consulting, Naples, FL; Assistant Professor, Immokalee Training Site, Department of Geriatrics, Florida State University College of Medicine*

Moderator: Michelle A. Lewis, DNP, MSN, ARNP, FNP-BC, GNP-BC; Director, FMDA; Chair, Education Committee



Rick Foley



Elizabeth Hidlebaugh

3

Schedule of Events

Friday, Oct. 20, 2023

12-1 p.m.

Wekiwa 3/4/5

PRODUCT THEATER LUNCH* (NON-CME/CPE/CE)

Recognizing and Treating
Tardive Dyskinesia in
Long-Term Care

► Erik Cabrera, MD; *Medical
Director, Aging Mind Psychiatry,
Miami, FL*

– Sponsored by *Neurocrine*



Erik Cabrera

1-2 p.m.

Gatlin A1/2

► **110** Script for Filling the Gap: The
Importance of Medication Management and
Best Practices in Transitions of Care

(1 hour)



Mary Lomberg



Michael Samarkos



Mark D. Solomon



Jacqueline Vance

- Mary Lomberg, PharmD, BCACP, CPh; *Transitions of Care Clinical Pharmacist, BayCare Health Systems, Safety Harbor*
- Michael Samarkos, PharmD, CPh; *Regional Director, Clinical & Consultant Services, Guardian Pharmacy of Orlando*
- Mark D. Solomon, BS, MA, NHA; *Corporate Director of Compliance, Avante Group*
- Jacqueline Vance, RNC, BSN, CDONA/LTC, FADONA, IP-BC, CDP, ASCOM, LBBP; *Senior Director, Clinical Innovation and Education Mission Health Communities, Tampa; President, Board of Directors, National Transitions of Care Coalition*

Moderator: Kenya Rivas, MD, FAAP, CMD; Vice Chair, Education Committee; Program Director

2:05-3:05 p.m.

Gatlin A3/4

**GRAND OPENING OF TRADE SHOW
AND POSTER PRESENTATIONS**

3:15-4:15 p.m.

Gatlin A1/2

► **111** The Sum Is Greater Than the Parts:
Mitigating the Risk – Utilization Review Results
of a 1-Year SNF Clinical Team Assessment of
Difficult Cases
(1 hour)



Brian Kiedrowski



Maria Clyce



Bertha Carrion



Gregory James

- Brian Kiedrowski, MD, CMD; *Chief Medical Officer; Catholic Health Systems, South FL*
 - Maria Clyce, PharmD; *Director of Pharmacy, Catholic Health Systems, South FL*
 - Bertha Carrion, ARNP; *Clinical Manager, Optum Health, Southeast FL*
 - Gregory James, DO, MPH, CMD; *Senior Medical Director, Optum Health*
- Moderator:** Kimberly Jackson, PharmD, CPh; Member, Education Committee

* **Product Theaters:** CE/CME credit is not provided for these programs.

Schedule of Events

4

Friday, Oct. 20 and Saturday, Oct. 21, 2023

4:20-5:20 p.m.

Gatlin A1/2

» 112 An Update on Geriatric Syndromes in LTC (1 hour)

► Milta Oyola Little, DO, CMD; Associate Professor, Geriatric Medicine, Duke University School of Medicine; President, AMDA

Moderator: Elizabeth Hidlebaugh, MD; Member, Education Committee



Milta Oyola Little

5:25-6:55 p.m.

Gatlin A3/4

Exhibit Hall Welcome Reception

Refreshments sponsored by
VITAS Healthcare —
32nd Annual Diamond Sponsor

SATURDAY, OCT. 21

7:45 a.m.-6 p.m.

Gatlin Registration 1
Registration & Information

8-9 a.m.

Gatlin A3/4

Continental Breakfast in Exhibit Hall with Trade Show and Poster Presentations

Sponsored by: **VITAS Healthcare** —
32nd Annual Diamond Sponsor

9-9:05 a.m.

Gatlin A1/2

Greetings from AMDA Executive Director
Michelle Zinnert, CAE

Wireless access in the Conference Center meeting rooms:



Select: Convention Wireless
PIN code: FMDA23

9:10-10:40 a.m.

Gatlin A1/2

» 113 National Leaders Forum (1.5 hours)



Milta Oyola Little



Jennifer L. Kim



David Gifford

► AMDA President Milta Oyola Little, MD, CMD; Associate Professor, Geriatric Medicine, Duke University School of Medicine

► GAPNA Immediate Past-President Jennifer L. Kim, DNP, GNP-BC, GS-C, FNAP, FAANP; Professor of Nursing, Vanderbilt School of Nursing

► David Gifford, MD; Senior VP of Quality & Regulatory Affairs, American Health Care Association

Moderator: Diane Sanders-Cepeda, DO, CMD; President, FMDA; Member, Education Committee

10:45-11:45 a.m.

Gatlin A1/2

» 114 National Trends in PALTC (1 hour)

► Rhonda Randall, DO; EVP & Chief Medical Officer, UnitedHealthcare Employer & Individual; Past-President and Chair, FMDA



Rhonda Randall

Moderator: Shark Bird, MD, CMD, CWSP; Vice President, FMDA; Member, Education Committee

11:45 a.m.-12:50 p.m.

Gatlin A3/4

Break in Exhibit Hall
Sponsored by Optum

Schedule of Events

Saturday, Oct. 21, 2023

12:50-1:50 p.m.

Butler

PRODUCT THEATER LUNCH* (NON-CME/CPE/CE)

Agitation Associated with Dementia Due to Alzheimer's Disease: An Expert Discusses Treatment Considerations and Current Guidelines

- Pari Deshmukh, MD, FAPA, FASAM; CEO and Medical Director, *Balanced Wellbeing, Oxford, FL*
– Sponsored by *Otsuka America Pharmaceutical, Inc., and Lundbeck*



Pari Deshmukh

1:50-2:50 p.m.

Gatlin A1/2

115 AMDA Public Policy Update (1 hour)

- Alex Bardakh, MPP, PLC, CAE; Senior Director, Advocacy and Strategic Partnerships, AMDA – The Society for Post-Acute and Long-Term Care Medicine



Alex Bardakh

Moderator: Brian Kiedrowski, MD, MBA, CPE; Director, FMDA; Member, Education Committee

2:55-3:55 p.m.

Gatlin A1/2

116 STATE AHCA Regulatory Update (1 hour)

- Kimberly R. Smoak, MSH, QIDP; Deputy Secretary, Division of Health Quality Assurance, Florida's Agency for Health Care Administration



Kimberly Smoak

Moderator: Rhonda L. Randall, DO; Chair, FMDA; Member, Education Committee

4-5:30 p.m.

Gatlin A1/2

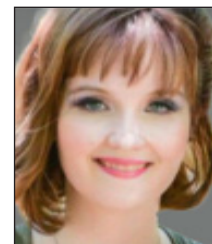
117 QA&A and QAPI: Driving the Call to Action (1.5 hours)



Brian Smith



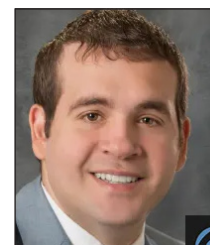
Jen Lawrence



Kelly Ratanasurakarn



Rick Foley



Axel Martinez

- Administrator – Brian Smith, LNHA; Chief Operating Officer, *Aston Health, Tampa*
► Director of Nursing – Jen Lawrence, MSN, MBA, NHA, RN; Chief Nursing Officer, *Aston Health, Tampa*
► IP Nurse – Kelly Ratanasurakarn, BSN, RN; Director of Informatics Nursing, *Aston Health, Tampa*
► Pharmacist – Rick Foley, PharmD, CPh, BCGP, FASCP; Senior Manager, Clinical Services LTC, *Omnicare*
► Medical Director – Axel Martinez, MD; *Aston Health, Tampa*

Moderator: Brian Kiedrowski, MD, CMD; Chief Medical Officer; Catholic Health Systems, South FL; Director and Member, Education Committee

* **Product Theaters:** CE/CME credit is not provided for these programs.

Schedule of Events

Saturday, Oct. 21, and Sunday, Oct. 22, 2023

CONCURRENT SESSIONS

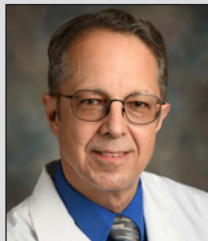
5:40-6:40 p.m.

Wekiwa 3/4

118 Medicare Billing & Coding Update (1 hour)

► Chuck Crecelius, MD, CMD

Moderator: Alfonso Gonzalez-Rodriguez, MD; Director, FMDA; Member, Education Committee



Chuck Crecelius

5:40-6:40 p.m.

Wekiwa 5

119 From Novice to Expert: Rapid Fire Presentations (1 hour)



Lisa Dusch



Rachel Cathey



Laura Tubbs

Taking the "I" out of Advance Care Planning (ACN)

► Lisa Dusch, MSN, APRN, ACHPN; Vice President of Clinical Services, Personal Care Medical Associates, Palliative Division, Aliquippa, PA

Lessons Learned from Our Wisest Cohort

► Rachel Cathey, BS; Third-year medical student, Florida State University College of Medicine, Tallahassee, FL

Self-Care: Prevention of Compassion Fatigue and Burnout

► Laura Tubbs, RN, MEd, MSN, LNHA, CDP, CQP; Associate Professor, International College of Health Sciences, Boynton Beach, FL

Moderator: Shark Bird, MD, CMD, CWSP; Vice President, FMDA; Member, Education Committee

The Rapid-Fire Presentations are sponsored by FL GAPNA

6:45-7:55 p.m.

Sandlake

President's Wine & Cheese Reception

– Reception Sponsored by Optum

FMDA's Robert Kaplan
Quality Champion Award
Sponsored by Omnicare/CVS

SUNDAY, OCT. 22

7:15 a.m.-1:15 p.m.

Wekiwa Foyer

Registration & Information

6:45-7:45 a.m.

Wekiwa 3

Conference Planning Committee Review & Wrap-up Breakfast Meeting

Open to all members interested in learning more about how we plan, implement, and evaluate our annual conference.

Breakfast will be served.

7:20-9 a.m.

Gatlin A1/2

Continental Breakfast Sponsored by Teva

Self-Parking at Rosen Shingle Creek:

Discounted self-parking is \$18 per vehicle per day (plus sales tax) for all FMDA conference participants. The lot is unattended. You will need to use Mobile Pay.

Mobile Pay Parking

1. To pay for parking, text D15 to 407-337-2891.
2. Tap the link provided in the text message.
3. Enter license plate #.
4. Enter departure time & payment info.



Schedule of Events

Sunday, Oct. 22, 2023

7:45-8:40 a.m.

Gatlin A1/2

120 Red-Eye Rounds: PALTC & Geriatrics Clinical Quandaries

(1.0 / 0.9 hour)



Naushira Pandya



Laurie Workman



Simone Minto-Pennant

► Naushira Pandya, MD, CMD, FACP; *Professor and Chair, Department of Geriatrics, Kiran C. Patel College of Osteopathic Medicine, Nova Southeastern University; Project Director, NSU's South Florida Workforce Enhancement Program; Past-President, AMDA – The Society for Post-Acute and Long-Term Care Medicine*

► Laurie Workman, DNP, APRN; *HouseCalls Nurse Practitioner, Optum*

► Simone Minto-Pennant, PharmD, BCPS, CPh; *Pharmacy Consultant, Alwyn C. Cashe State Veterans' Nursing Home*

Moderator: Bernardo Reyes, MD, CMD, AGSF; Director, FMDA; Member, Education Committee

8:45-10:05 a.m.

Gatlin A1/2

121 Geriatric Literature Review

(1.5 / 1.33 hours)

► Niharika Suchak, MBBS, MHS, FACP, AGSF; *Clinician-Educator and Associate Professor, Department of Geriatrics, Florida State University College of Medicine (FSUCOM); Director, Interprofessional Education, FSUCOM; Education Director, Geriatrics, FSUCOM; Director of Medical Education and Research, Big Bend Hospice, Tallahassee, FL*

Moderator: Debra Danforth, DNP, APRN, FAANP; Member, Education Committee



Niharika Suchak

10:10-11:05 a.m.

Gatlin A1/2

122 Enhancing Heart and Brain Health in PALTC

(1.0 / 0.9 hour)

► Jeanne Y. Wei, MD, PhD; *Executive Director, Reynolds Institute on Aging; Professor and Chairperson, Reynolds Department of Geriatrics, University of Arkansas for Medical Sciences*

Moderator: Brianna Wynne, MD; Member, Education Committee



Jeanne Y. Wei

11:15 a.m.-12:10 p.m.

Gatlin A1/2

123 C. Difficile Muy Difícil – 2023

(1.0 / 0.9 hour)

► David A. LeVine, MD, CMD; *Medical Director and Chief Medical Officer, Menorah Manor, St. Petersburg, FL*

Moderator: Samantha Quigley, PharmD, CPh, BCGP; Member, Education Committee



David A. LeVine

12:15-1:15 p.m.

Gatlin A1/2

124 OMG...What Can I Put on That? Case-Based Practical Guidance on Topical Wound Treatments

(1 hour)

► Shark Bird, MD, CMD, CWSP; *Chief Medical Officer, Vohra Wound Physicians*

► Janet Mackenzie, MD; *Chief Medical Officer, Vohra Wound Physicians*

Moderator: Jennifer Moses, DMP, CRNP; Member, Education Committee



Shark Bird



Janet Mackenzie

1:15 p.m.

END OF CONFERENCE

Announcements, Door Prizes, etc.

– Please note that the speakers and topics for this meeting are subject to change without notice.

**Attention all attendees seeking continuing
education credits
- regardless of your profession -
Credit Claim Instructions**

To claim credit:
Scan QR Code Below
OR
Visit

<https://apex.paltc.org/course/view.php?id=1608>



- Login with your AMDA Credentials.
If you don't have an AMDA Account, create a free account.
- You must complete the online evaluation process before
you download the Certificate of Attendance.
- Download Certificate.
- Credit will automatically appear on your AMDA Transcript
and be sent to ABPLM if applicable.

Pharmacists: General Pharmacist CEs and Consultant Pharmacist CEs are provided by the Association for Medication Education (AME). AME is accredited as a provider of continuing pharmacy education by the Accreditation Council for Pharmacy Education (ACPE). AME abides by the ACPE Accreditation Standards for Continuing Pharmacy Education. To earn pharmacist CEs please refer to the packet each pharmacist was provided upon arrival at registration.

Faculty Disclosures

Financial Relationship Disclosures

Speakers are required to provide verbal disclosure prior to each talk. If the learner perceives any bias toward a commercial product or service, please report this to the Society's staff. According to the Society and ACCME policy, all those in a position to control content are required to disclose any relevant financial relationships.

The following speakers and planners have relevant financial relationships:

Naushira Pandya (Speaker) Sanofi: Advisory Board;
Lilly: Speaker's Bureau
Jacqueline Vance (Speaker) Neurocrine Biosciences: Advisory Board
David Wolinsky (Speaker) Pfizer: Advisory Board, Speaker's Bureau;
BridgeBio: Advisory Board;
Anylam: Advisory Board;
Astellas: Consultant, Speaker's Bureau
Kenya Rivas, MD, FACP, CMD (Planner) OptumRX: Stockholder

All other speakers and planners have no relevant financial relationships.

All relevant financial relationships have been identified and mitigated.

Self-Parking at Rosen Shingle Creek:

Discounted self-parking is \$18 per vehicle per day (plus sales tax) for all FMDA conference participants. The lot is unattended. You will need to use Mobile Pay.

Mobile Pay Parking

1. To pay for parking, text D15 to **407-337-2891**.
2. Tap the link provided in the text message.
3. Enter license plate #.
4. Enter departure time & payment info.



2023 Annual Trade Show

Exhibitors

Acadia Pharmaceuticals
 Balanced Wellbeing
 Boehringer Ingelheim Pharmaceuticals
 Cornerstone Hospice
 D2 Solutions
 Ferring Pharmaceuticals
 FL-GAPNA
 LTC ACO
 MDops Corporation
 Medical Transcription Services
 MedTech International Group
 Nestle Health Science/Seres Therapeutics
 Netsmart
 Neurelis
 Neurocrine Biosciences
 ONEai™ Health
 Optum
 Otsuka America Pharmaceutical and Lundbeck
 PointClickCare
 Pro Mal Insurance
 RapidX Mobile Diagnostics Services
 Senior Care Solutions/Senior Nannies
 SK Life Sciences
 Spectrum Medical Partners
 Sumitomo Pharma
 Synchrony Health Services
 TEVA Pharmaceuticals
 The Rose Program
 Thrive Behavioral Sciences
 UCB
 VITAS Healthcare
 Vohra Wound Physicians
 Xeris Pharmaceuticals

***Show your support by visiting these exhibitors,
and be eligible to win great door prizes!***

2023 Annual Trade Show Exhibitors



Acadia Pharmaceuticals (OA)

Heather Highfield
Executive LTC Specialist
4650 Links Village Dr., A104
Ponce Inlet, FL 32127
Phone: (407) 399-0361
heather.highfield@acadia-pharm.com

Acadia is trailblazing breakthroughs in neuroscience to elevate life. We are at the forefront of healthcare, fighting for breakthroughs in our science, our therapies and the way we work, but also in the lives of the people we serve. At Acadia, we are committed to our purpose: we fight disease so more you shines through.



Balanced Wellbeing LLC (OA)

Kathleen Miller
Director of Strategic Growth and Business Development
3200 SW 34th Ave., Ste. 701
Ocala, FL 34474
Phone: (407) 619-9870; Fax: (888) 248-4348
kathleenmiller@balancedwellbeingllc.com

Balanced Wellbeing is a medical psychiatric/psychotherapy practice providing services in SNF, ALF & Group Homes. Our providers are highly credentialed and board certified led by our CEO & Medical Director, triple board-certified psychiatrist Dr. Pari Deshmukh "Dr. Desh." Dr. Desh has focused on improving residential life & facility compliance.



Boehringer Ingelheim Pharmaceuticals, Inc.

David Reis
Senior National Account Director
5138 Deerview Park Dr.
Cleveland, OH 45002
Phone: (513) 941-8364
dave.reis@boehringer-ingelheim.com

At Boehringer Ingelheim we create value through innovation with one clear goal: to improve the lives of patients. We develop breakthrough therapies and innovative healthcare solutions in areas of unmet medical need for both humans and animals. As a family-owned company, we focus on long-term performance. We are powered by 50,000 employees globally who nurture a diverse, collaborative, and inclusive culture. Learning and development for all employees is key because your growth is our growth.



Cornerstone Hospice

Mindy Wright
Director of Business Development
5655 S. Orange Ave.
Orlando, FL 32809
Phone: (321) 289-9300
wrightm2@chaptershealth.org

Once Cornerstone Hospice is recommended, you will be surrounded by a team of professionals who design a plan of care that controls pain, manages symptoms and empowers you to make your choices. While the plan we create has the patient at the center of activity, it also includes educating those around you on the role of hospice in the life of your family.



D2 Solutions

Joe Reichard
Director, Hospital and Payer Markets
1568 N. Farm Rd. 227
Strafford, MO 65757
Phone: (417) 316-3135
joe.reichard@d2rx.com

D2 Solutions provides nonprescription pharmaceuticals for acute and long-term care applications. These are well-recognized and established brands in therapeutic areas, such as skin and wound care, sleep, topical analgesia, foot care, oral rehydration, digestive. D2's brands are known for quality ingredients and manufacturing, such as AQUAPHOR and EUCERIN from Beiersdorf.



PHARMACEUTICALS

Ferring Pharmaceuticals

Darren Moore
Institutional Strategic Account Director
100 Interspace Pkwy.
Parsippany, NJ 07054
Phone: (850) 375-3670
darren.moore@ferring.com

REBYOTA ("REE-bye-oh-ta") is the first and only single-dose, FDA-approved microbiome-based treatment to keep recurrent C. diff infection from coming back, after you've already taken antibiotics. The first and only single-dose microbiota-based live biotherapeutic approved to prevent recurrence of C. difficile infection starting at first recurrence.

Continued on the next page →

2023 Annual Trade Show Exhibitors



FL-GAPNA (S)

Michelle Lewis, DNP
FL-GAPNA President
255 Dryden Cir.
Cocoa, FL 32926
Phone: (321) 536-9089
arnpmichelle@yahoo.com

Supports nurse practitioners caring for older adults.



LTC ACO

Carol Bauer
Senior Director, Network Development
101 E. State St.
Kennett Square, PA 19348
Phone: (610) 662-4034; Fax: (610) 925-7577
carol.bauer@ltcacoco.com

LTC ACO began participating in the Medicare Shared Savings Program (MSSP) in 2016 for Medicare beneficiaries who reside in long-term care facilities. Our mission is to dramatically improve the quality and cost of healthcare delivered to Medicare beneficiaries, rewarding participating providers for achieving these outcomes.



MDOps Corporation

Matthew Almgren
Development
188 Cranberry Ct.
Melville, NY 11747
Phone: (631) 617-8659
malmgren@mdops.com

MDOps offers MDLog, a clinical documentation app with built-in instant dictation that makes practitioners more efficient and their organizations more profitable. More than just dictation, MDLog also offers:

- Direct integration with PointClickCare and American HealthTech
- eRx
- Chronic Care Management module
- Patient/family/caregiver portal
- And more. Come see what's new with MDLog.



Medical Transcription Services

Caleche Bongo
Chief Operations Officer
3223 Ellscott Dr.
The Woodlands, TX 77386
Phone: (240) 425-2240
cbongo@medtranscriptionservices.org

Medical transcription services increase both leisure time and productivity of providers leading to higher financial rewards as well as increased quality of life. This is done through the provision of state-of-the-art transcriptions of recorded medical data for physicians, physician assistants, nurse practitioners, and other health care professionals.



MedTech International Group

Lisa Moore
Director of Business Development
875 N. Eldridge Pkwy.
Houston, TX 77079
Phone: (888) 507-7917; Fax: (888) 507-7917
lisa@medtechinternationalgroup.com

MedTech International is a mission-driven company. For us, that means a strong collaboration with our clinical partners to continuously deliver innovative and alternative therapies to fulfill clinical needs and improve patient outcomes.



Nestlé Health Science/Seres Therapeutics

Alex Bacon
Specialty Representative – GI
406 S. Albany Ave., Unit A
Tampa, FL 33606
Phone: (813) 732-7688
alexander.bacon@us.nestle.com

Seres Therapeutics, Inc. (Nasdaq: MCRB), is a commercial-stage company developing novel microbiome therapeutics for serious diseases. Nestlé Health Science, a leader in the science of nutrition, is a globally managed business unit of Nestlé.



Netsmart

Brian Palermo
Senior Client Development Representative
11100 Nall Ave.
Overland Park, KS 66211
Phone: (913) 272-2423
bpalermo@ntst.com

Continued on the next page →

2023 Annual Trade Show Exhibitors

Netsmart/GEHRIMED, a leading provider of Software-as-a-Service technology and services solutions, designs, builds and delivers EHRs, HIEs, analytics and telehealth solutions and services that are powerful, intuitive and easy to use. We make the complex simple and personalized so our clients can provide services and treatment that support whole-person care. Visit www.netst.com/solutions/by-community/post-acute-care/gehrimed.



Neurelis

Nicole Newcombe
Associate Director, Key Accounts
3430 Carmel Mountain Rd., Ste. 300
San Diego, CA 92121
Phone: (617) 851-9695
nnewcombe@neurelis.com

Neurelis, Inc., is an innovation-driven neuroscience company providing a highly differentiated approach to target unmet medical needs. Neurelis is focused on the development and commercialization of product candidates for epilepsy and the broader central nervous system (CNS) market. We are built on a foundation of people with a passion for progress in serving the needs of people with epilepsy and those who care for them. Neurelis has reached a milestone in patient care with its first FDA-approved treatment. For further information, please visit our Product Page. For more information about Neurelis, please visit www.neurelis.com.



Neurocrine Biosciences

Tony Munoz
Regional Specialty Manager – LTC Southeast
12780 El Camino Real
San Diego, CA 92130
Phone: (786) 414-0347
tmunoz@neurocrine.com

Neurocrine Biosciences is a leading neuroscience-focused, biopharmaceutical company with a simple purpose: to relieve suffering for people with great needs, but few options. We are dedicated to discovering and developing life-changing treatments for patients with under-addressed neurological, neuroendocrine, and neuropsychiatric disorders. For more information, visit neurocrine.com.



ONEai Health

Rob Fisher
CEO & Founder
1386 Legendary Blvd., Ste. 190
Clermont, FL 34711
Phone: (248) 798-3291
rob@oneaihealth.com

Our ONEai smart wearable device will be your trusted partner for real-time, ai-forecasted health insights and proactive support. It provides instant access to crucial health data, eliminating the need to take vitals, saving time, and enabling timely interventions and personalized attention for patients.



Optum (S) (OA)

Dr. Gregory James
Senior Medical Director – Florida
5130 Sunforest Dr.
Tampa, FL 33634
Phone: (727) 452-5593
gregory.j.james@optum.com

Optum partners with health plans to bring specialized health care benefits, clinical support and over 25 years of experience to residents in skilled nursing facilities (SNFs), assisted living communities (ALCs) and memory care units.



Otsuka America Pharmaceutical, Inc., and Lundbeck (S)

Alanna Johnson
National Director, LTC, Market Access
508 Carnegie Center Dr.
Princeton, NJ 08540
Phone: (818) 339-3774
alanna.johnson@otsuka-us.com

Otsuka America Pharmaceutical, Inc. (OAPI), is an innovative healthcare company that commercializes Otsuka-discovered and in-licensed products in the U.S., with a focus on neuroscience, nephrology, and medical devices.

PointClickCare®

PointClickCare

PointClickCare Technologies Inc. – for contract purposes only
5570 Explorer Dr.
Mississauga, ON L4W 0C4, Canada
Phone: (800) 277 5889
info@pointclickcare.com

PointClickCare is a leading healthcare technology platform enabling meaningful collaboration and access to real-time insights at every stage of the patient healthcare journey.



Pro Mal Insurance

J. Shorey
Founder & General Counsel
3737 Park East Dr., Ste. 204
Beachwood, OH 44122
Phone: (866) 217-9719, ext. 312
jj@promalinsurance.com

Pro Mal Insurance is the leading provider of affirmative medical malpractice insurance for Cannabis Wrongful Acts — acts

Continued on the next page →

2023 Annual Trade Show Exhibitors

typically excluded by malpractice policies. Our supplemental policy protects physicians against claims not covered by their traditional insurance yet allows them to keep that insurance intact. Our affordable policy pairs with accredited education.



RapidX Mobile Diagnostics Services

Sonia Geroulakis
Director of Sales
2414 E. 17th Ave.
Brooklyn, NY 11235
Phone: (929) 944-9150
soniabouchneb@gmail.com

RapidX uses the latest state-of-the-art imaging equipment. RapidX services Florida, New York and New Jersey. Provides Xray, Ultrasound, EKG and Holter Monitor services bedside. Services are extended to Skilled Nursing, ALF, patient homes.



Senior Care Solutions/Senior Nannies

Claudia Wechter
President
3313 W. Commercial Blvd., Ste. 130
Fort Lauderdale, FL 33309
Phone: (954) 658-8105; Fax: (954) 730-8349
claudia@seniornannies.com

Skilled and non-skilled home health.



SK Life Science

Jamie Davis
Key Account Manager
113 Poplar Leaf Dr.
Vilas, NC 28692
Phone: (828) 260-0242
jdavis@sklsi.com

SK Life Science, Inc., is focused on developing treatments for CNS disorders.

We have a pipeline of eight compounds in development. The first approved drug is XCOPRI, an anti-epileptic drug indicated for focal seizures in adult patients.

For more information on XCOPRI or SK Life Science, visit www.XCOPRIhcp.com or www.SKLifeScienceInc.com.



SPECTRUM
MEDICAL PARTNERS
— FLORIDA'S LEADING PRIVATE HEALTHCARE ORGANIZATION —

Spectrum Medical Partners

Juliana Henchy
Regional Director of Business Development
525 Technology Park, Ste. 109
Lake Mary, FL 32746
Phone: (407) 312-0328; Fax: (407) 647-5431
jhenchy@spectrummedpartners.com

Spectrum Medical Partners (SMP) is Florida's leading private healthcare organization that provides quality patient- and community-centric value-based care. Developing and implementing its own proprietary technology, SMP offers a combination of clinical, technological, and strategic strengths to acute and post-acute care.



Sumitomo Pharma (S) (OA)

Greg Anderson
Regional Sales Manager
4610 SE 8th St.
Ocala, FL 34471
Phone: (352) 804-1455
greg.anderson@us.sumitomo-pharma.com



Synchrony Health Services

Clay Pell
Director of Sales
2710 Chestnut Station Ct.
Louisville, KY 40299
Phone: (941) 779-4191
clay.pell@synchronyhs.com

Improving Outcomes Through Clinical Excellence
Our mission is to pursue clinical excellence through collaboration and innovation; resulting in extraordinary outcomes. At Synchrony Health Services, we are dedicated to providing the highest quality healthcare to customers and the people they serve. We are committed to this mission, and strive every day to make a positive impact on the lives of those we serve.



TEVA Pharmaceuticals (S) (OA)

Richard Barrineau, RSM
135 Kingsland Way
Piedmont, SC 29673
Phone: (843) 437-6506
richard.barrineau@tevapharm.com

Teva Pharmaceutical Industries Ltd. has been developing and producing medicines to improve people's lives for more than a

Continued on the next page →

2023 Annual Trade Show Exhibitors

century. We offer generic, biosimilars and innovative medicines with a portfolio consisting of over 3,600 products in nearly every therapeutic area. Learn more at www.tevapharm.com.



The Rose Program (S)

David Thimons, MD
CEO
2000 Cliff Mine Rd.
Pittsburgh, PA 15275
Phone: (878) 201-3312; Fax: (878) 201-3584
jlhartle@pcmanetwork.com

The Rose Program is trying to redefine what palliative medicine means to the post-acute space across the country. This is done by making palliative care available to all patients with advanced illness and suffering, with the results of respecting patients' values, minimizing unnecessary hospitalizations and medications, and greatly reducing overall cost.



Thrive Behavioral Sciences (OA)

Stephen Lomonico, NHA, CRM
President/CEO
5510 N. Hesperides St.
Trinity, FL 34655
Phone: (727) 418-2567
lomonico@thrivebehavioralsciences.com

Thrive Behavioral Sciences is a leading provider of Psychiatric and Psychological care in the Post-Acute Care setting in Florida. Owned and operated by a Nursing Home Administrator, we think like you think and help to care for your patients and keep the facility in compliance.



UCB

Taunya Masterson
Post-Acute Care Specialist
1950 Lake Park Dr.
Smyrna, GA 30080
Phone: (813) 220-5551
taunya.masterson@ucb.com

At UCB, we are driven to improve the lives of people living with epilepsy and rare syndromes. For more than 30 years, we have provided solutions that have helped transform the epilepsy landscape and improved the lives of millions of people. As leaders in the field it is our responsibility to find new ways to evolve the treatment landscape with a focus on moving from seizure symptoms to disease modification. The epilepsy and rare syndromes community is at the heart of everything we do, and our commitment has never been stronger.



VITAS Healthcare (S) (OA)

Lillian Valeron
Director of Market Development
2201 Lucien Way, Ste. 100
Maitland, FL 32751
Phone: (407) 875-0028; Fax: (877) 848-2702
cristhian.piraquive@vitas.com

A hospice pioneer since 1978, VITAS® Healthcare is the nation's leading provider of end-of-life care. Patient-centered, comfort-focused care by an interdisciplinary VITAS team reduces hospital readmissions, length of stay, and overall healthcare costs while improving quality metrics and patient satisfaction. Call 800.93.VITAS. Visit VITAS.com. Download the mobile referral app at VITASapp.com.



Vohra Wound Physicians

Brad Sherwood
Director of Business Development
3601 SW 160th Ave.
Miramar, FL 33027
Phone: (954) 399-4648
bsherwood@vohraphysicians.com

Vohra Wound Physicians is the nation's largest physician group specialized in wound management. Our physicians partner with 3,200 skilled nursing facilities in 28 states. We partner with post-acute care facilities to develop center of excellence programs that are physician led, patient centric, and data driven. We provide comprehensive training for our facility nurses with certification & CEUs.



Xeris Pharmaceuticals

Danielle Fedor
Director, Long-Term Care
1375 W. Fulton St., Ste. 1300
Chicago, IL 60607
Phone: (386) 747-5692
dfedor@xerispharma.com

At Xeris Pharmaceuticals, Inc., the maker of Gvoke HypoPen® (glucagon injection), we believe that our technology can profoundly impact the lives of patients. That's why we're proud to be the first to develop liquid glucagon. Learn how our technology is unlocking the potential of today's medicines at www.xerispharma.com.

(S) = Sponsor
(OA) = Organizational Affiliate

108 – Legal Update for Practitioners

(1.0 hour)

Gregory A. Chaires, Esq.

LEARNING OBJECTIVES

At the conclusion of this program, attendees should be able to:

1. Review existing laws and rules impacting practitioners.
2. Discuss new laws passed in the 2023 legislative session.
3. Understand obligations related to maintenance of professional license.

NOTES

[illegible]

Friday, Oct. 20, 2023 ♦ 9:50-10:50 a.m.

109 – Psychotropic Stewardship – Phase 3 Guidance and Beyond

(1.0 hour)

Rick Foley, PharmD, CPh, BCGP, FASCP

Elizabeth Hidlebaugh, MD

LEARNING OBJECTIVES

At the conclusion of this program, attendees should be able to:

1. Identify and understand the rationale of the major changes to the regulations during Phase 3 (October 2022).
2. Accurately identify when dose reductions are required for common and so-called “substitute” psychotropic medications.
3. Describe how each member of the interdisciplinary team is involved in ensuring effective psychotropic stewardship.
4. Review the rationale for Phase 3 guidance for psychotropic medications.
5. Summarize the Phase 3 guidance changes for psychotropic medications.
6. Identify and develop a plan for addressing potential psychotropic medication irregularities.
7. Design and implement a psychotropic stewardship program.
8. Summarize keys to success to work as a team in a psychotropic stewardship program.

NOTES

[illegible]

Friday, Oct. 20, 2023 ♦ 10:55-11:55 a.m.

110 – Script for Filling the Gap: The Importance of Medication Management and Best Practices in Transitions of Care

(1.0 hour)

Mary Lomberk, PharmD, BCACP, CPh

Michael Samarkos, PharmD, CPh

Mark D. Solomon, BS, MA, NHA

Jacqueline Vance, RNC, BSN, CDONA/
LTC, FADONA, IP-BC, CDP, ASCOM, LBBP

LEARNING OBJECTIVES

At the conclusion of this program, attendees should be able to:

1. Describe the background and purpose of transitions of care (TOC).
2. Discuss differences in medication management in the inpatient and outpatient setting.
3. Investigate possible medication discrepancies during transitions of care process.
4. Review best practices of transitions of care for the interprofessional healthcare team.
5. Identify barriers related to care transitions and opportunities for development of transitions of care programs.

NOTES

Friday, Oct. 20, 2023 ♦ 1-2 p.m.

111 – The Sum Is Greater Than the Parts: Mitigating the Risk – Utilization Review Results of a 1-Year SNF Clinical Team Assessment of Difficult Cases

(1.0 hour)

Bertha Carrion, ARNP

Maria Clyce, PharmD

Gregory James, DO, MPH, CMD

Brian Kiedrowski, MD, CMD

LEARNING OBJECTIVES

At the conclusion of this program, attendees should be able to:

1. Discuss the multidisciplinary aspect of utilization review.
2. Review the utilization review template and process.
3. Describe unexpected findings, e.g., enhanced deprescribing and consultation management.
4. Identify how the findings may result in alleviation of some aspects of nursing burden.
5. Summarize how to achieve these results in their own facilities.

NOTES

Friday, Oct. 20, 2023 ♦ 3:15-4:15 p.m.

112 – An Update on Geriatric Syndromes in LTC

(1.0 hour)

Milta Oyola Little, DO, CMD

LEARNING OBJECTIVES

At the conclusion of this program, attendees should be able to:

1. Define geriatric syndrome.
2. Distinguish syndrome-based from diagnosis-based approach to resident assessment.
3. List and describe the 5Ms framework for resident-centered care.
4. Apply short screening tools to assess for frailty, sarcopenia, falls, incontinence, and malnutrition.
5. List the initial work-up and management of these geriatric syndromes.

NOTES

[illegible]

Friday, Oct. 20, 2023 ♦ 4:20-5:20 p.m.

113 – National Leaders Forum

(1.5 hours)

David Gifford, MD

Jennifer L. Kim, DNP, GNP-BC, GS-C,
FNAP, FAANP

Milta Oyola Little, DO, CMD

LEARNING OBJECTIVES

At the conclusion of this program, attendees should be able to:

1. Describe where the PALTC system is heading, significant challenges the industry will face in the future, and some of the steps that need to be taken.
2. Discuss opportunities for professional organizations to partner with each other and related LTC/geriatrics organizations to improve patient care.
3. Identify current regulations that may not be in the best interest of our patients or the health care system from a cost standpoint.
4. Summarize key factors that will impact (both positively and negatively) nursing homes in the next 5-10 years.
5. Review approaches to enhance and measure quality of care at the interface of acute and post-acute care.

NOTES

[illegible]

Saturday, Oct. 21, 2023 ♦ 9:10-10:40 a.m.

114 – National Trends in PALTC

(1.0 hour)

Rhonda Randall, DO

LEARNING OBJECTIVES

At the conclusion of this program, attendees should be able to:

1. Review the development of level-of-care trends historically.
2. Compare the state of PALTC internationally.
3. Discuss how COVID impacted the PALTC workforce.
4. Describe the current status of PALTC's care force – what the data shows.
5. Summarize the potential impact of future trends.
6. Identify strategies to be prepared for future success in PALTC.

NOTES

[illegible]

Saturday, Oct. 21, 2023 ♦ 10:45-11:45 a.m.

115 – AMDA Public Policy Update

(1.0 hour)

Alex Bardakh, MPP, PLC, CAE

LEARNING OBJECTIVES

At the conclusion of this program, attendees should be able to:

1. Discuss federal and state activity to improve care in the PALTC environment.
2. Identify ways clinicians can become better advocates for their practice and their patients.
3. Summarize recommendations to improve care in nursing homes.

NOTES

[illegible]

Saturday, Oct. 21, 2023 ♦ 1:50-2:50 p.m.

116 – State AHCA Regulatory Update

(1.0 hour)

Kimberly R. Smoak, MSH, QIDP

LEARNING OBJECTIVES

At the conclusion of this program, attendees should be able to:

1. Identify the most-commonly cited deficiencies and ways to improve to avoid these areas of non-compliance.
2. Summarize how the medical director can assist with oversight to improve these areas of non-compliance.
3. Discuss updates to the nursing home regulatory requirements.
4. Review the emergency preparedness and response requirements and the role of the medical director.
5. List the 2022–2023 immediate jeopardy findings for nursing homes and discuss how the role of the medical director, nurse leaders, and pharmacist can help nursing homes identify areas for improvement to avoid immediate jeopardy findings.

NOTES

[illegible]

Saturday, Oct. 21, 2023 ♦ 2:55-3:55 p.m.

117 – QA&A and QAPI: Driving the Call to Action

(1.5 hours)

Rick Foley, PharmD, CPh, BCGP, FASCP

Jen Lawrence, MSN, MBA, NHA, RN

Axel Martinez, MD

Kelly Ratanasurakarn, BSN, RN

Brian Smith, LNHA

LEARNING OBJECTIVES

At the conclusion of this program, attendees should be able to:

1. Define the relationship between QAA and QAPI.
2. Describe the QAA Committee and the Steering Committee.
3. Discuss how an agenda defines the meeting process.
4. Identify components of a successful QAPI agenda.
5. Outline categories of a PIP and reporting on PIPs.
6. Design a QAPI meeting tool.

NOTES

[illegible]

Saturday, Oct. 21, 2023 ♦ 4-5:30 p.m.

118 – Medicare Billing & Coding Update

(1.0 hours)

Chuck Crecelius, MD, CMD

LEARNING OBJECTIVES

At the conclusion of this program, attendees should be able to:

1. Identify the best code to use for individual patients and circumstances.
2. Compare advantages and disadvantages of medical decision making versus time-based billing.
3. Discuss the best and appropriate use of ancillary codes such as advance care planning and annual wellness exams.
4. Review common billing patterns seen in our field.

NOTES

[illegible]

Saturday, Oct. 21, 2023 ♦ 5:40-6:40 p.m.

119 – From Novice to Expert: Rapid Fire Presentations

(1.0 hour)

This session features practitioners and medical, nursing, and pharmacist students delivering brief (8-12 minutes each) TED-like talks on topics related to research, health care delivery, medical/nursing ethics, etc., in the post-acute and long-term care continuum.

1 of 3

Taking the “I” out of Advance Care Planning (ACN)

Lisa Dusch, MSN, APRN, ACHPN

LEARNING OBJECTIVES

At the conclusion of this program, attendees should be able to:

1. Enter an ACP conversation without your own agenda.
2. Avoid using medical information, medical abbreviations, or jargon in the conversation.
3. Ask open-ended questions and listen more than you speak during the conversation.
4. Document the patient's goals of care clearly so that the entire medical team can provide appropriate medical care.

NOTES

[illegible]

Saturday, Oct. 21, 2023 ♦ 5:40-6:40 p.m.

Goals of Care & Shared Decision Making: Interscalene Nerve Block and Shoulder Surgery

Rachel Cathey, BS

LEARNING OBJECTIVES

At the conclusion of this program, attendees should be able to:

1. Discuss the importance of nonmaleficence and shared decision making.
2. Describe multi-modal analgesia management.
3. Review the complications of brachial plexus interscalene nerve blocks.

NOTES

[illegible]

Saturday, Oct. 21, 2023 ♦ 5:40-6:40 p.m.

Self-Care: Prevention of Compassion Fatigue and Burnout

Laura Tubbs, RN, MSED, MSN, LNHA,
CDP, CQP

LEARNING OBJECTIVES

At the conclusion of this program, attendees should be able to:

1. Define stress and compassion fatigue.
2. Identify two barriers to self-care for staff and self.
3. Demonstrate two self-care techniques.
4. Take the pledge of self-care.

NOTES

[illegible]

Saturday, Oct. 21, 2023 ♦ 5:40-6:40 p.m.

120 – Red-Eye Rounds: PALTC & Geriatrics Clinical Quandaries

(1.0/.9 hour)

Simone Minto-Pennant, PharmD, BCPS, CPh

Naushira Pandya, MD, CMD, FACP

Laurie Workman, DNP, APRN

LEARNING OBJECTIVES

At the conclusion of this program, attendees should be able to:

1. Recognize learning gaps between interdisciplinary teams.
2. Define an effective process for readmission through team building (medical team, nursing, social services, etc.)
3. Describe high quality of care to sustain elder independence in the long-term care continuum.

NOTES

[illegible]

Sunday, Oct. 22, 2023 ♦ 7:45-8:40 a.m.

121 – Geriatric Literature Review

(1.5/1.33 hours)

Niharika Suchak, MBBS, MHS, FACP, AGSF

LEARNING OBJECTIVES

At the conclusion of this program, attendees should be able to:

1. Identify areas in clinical medicine where new strong evidence has been uncovered that may affect geriatric practice.
2. Describe the results of a critical appraisal of this evidence including limitations and pitfalls of published articles.
3. Discuss clinical advances in caring for older adults from a review of recent select peer-reviewed journal articles.

NOTES

[illegible]

Sunday, Oct. 22, 2023 ♦ 8:45-10:05 a.m.

122 – Enhancing Heart and Brain Health in PALTC

(1.0/0.9 hour)

Jeanne Y. Wei, MD, PhD

LEARNING OBJECTIVES

At the conclusion of this program, attendees should be able to:

1. Understand that the top risk factor of progressive cognitive decline is impaired cardiovascular function.
2. Identify ways to maintain and improve vascular and cardiac health.
3. Review the importance of reducing cardiac and vascular risk factors (e.g., HTN, dyslipidemia, and arrhythmias) on brain and memory health.

NOTES

[illegible]

Sunday, Oct. 22, 2023 ❖ 10:10-11:05 a.m.

123 – C. Difficile Muy Difícil – 2023

(1.0/0.9 hour)

David A. LeVine, MD, CMD

LEARNING OBJECTIVES

At the conclusion of this program, attendees should be able to:

1. List the antibiotics most likely to cause *c. difficile* and antibiotic-associated diarrhea.
2. Categorize the various tests used to diagnose *c. difficile* and choose which test is most appropriate.
3. Describe treatment strategies for initial and recurrent episodes of *c. difficile* colitis.

NOTES

[illegible]

Sunday, Oct. 22, 2023 ♦ 11:15 a.m.-12:10 p.m.

POSTER SESSION SCHEDULE

Please join our presenters in Gatlin A3/4

Friday, Oct. 20, 2023

2:05-3:05 p.m.; 5:25-6:55 p.m.

Posters open at 2:05 p.m.

Presenters required to attend both sessions

Saturday, Oct 21, 2023

8-9 a.m.

Presenters encouraged to attend

11:45 a.m.-12:50 p.m.

Presenters required to attend

6:45-7:55 p.m.

Recognition of Presenters

The Poster Review Committee wishes to thank this year's presenters:

Current as of Sept. 30, 2023

FMDA's 20th Annual Poster Presentations are sponsored by **FL GAPNA**

Reducing Antipsychotic Use: An Interdisciplinary Team Initiative

Authors: Padma Vedantam, MD; Marlon Vazquez Arroyo, MD; Anna Alexander, PharmD
Orlando VA Healthcare System (OVAHCS) Community Living Center (CLC)

Presenter: Padma Vedantam, MD; Medical Director, CLC, Orlando VA Medical Center

Abstract: While non-pharmacologic interventions remain the gold standard when managing anxiety and psychosis related to dementia, approximately one-third of elderly nursing home residents with dementia are prescribed antipsychotic medications to manage behaviors. The Food and Drug Administration has issued a black box warning regarding fatal adverse events in demented patients treated with antipsychotics and the Centers for Medicare & Medicaid Services requires facilities to attempt gradual dose reduction (GDR) of antipsychotic medications unless clinically contraindicated. The OVAHCS CLC originated an interdisciplinary initiative to reduce the use of antipsychotic medications for non-FDA approved indications. The team consisting of a geriatrician, psychiatrist, psychologist, and pharmacist met biweekly since January 2022 to review residents' diagnoses, behaviors, efficacy of prescribed antipsychotic medications, and feasibility of GDR with the goal of deprescribing. Moreover, the team monitored and managed behaviors with non-pharmacologic measures as medications were tapered. The team obtains quarterly report data from national SAIL and CLC Compare, which illustrates the percentage of residents on antipsychotic medications compared to VISN8 and national VA trends. From January to December 2022, antipsychotic use in short-stay residents at OVAHCS CLC decreased from 4.41% to 0%, which is below VISN 8 (3.61%) and VA national (2.65%) averages. Additionally, OVAHCS CLC long-stay residents on antipsychotics decreased from 12.16% to 10.71%, which is also below VISN 8 (11.67%) and VA national (17.08%) averages.

Conclusions: Implementation of the antipsychotic dose reduction initiative resulted in fewer short-stay and long-stay residents on antipsychotics for non-FDA approved indications. Ultimately, the VA interdisciplinary team goals align with the Age-Friendly Health Care System initiative to minimize use of high-risk medications and provide high-quality, safe care to older individuals.

Depression and 30-Day Returns to the Hospital in Centenarians

Authors: Kathryn Lotharius, Taylor Fistel, Gabriella Engstrom, Joseph Ouslander

Presenter: Kathryn Lotharius, BS

Introduction and Objectives: One in five hospitalized Medicare beneficiaries is readmitted within 30 days of discharge, costing \$15 billion annually. Depression is associated with increased 30-day hospital readmission, but this has not been well studied in centenarians. The objectives of this study were to determine the rate of 30-day hospital returns in centenarians with and without depression, and identify the primary diagnoses for these returns.

Methods: This secondary analysis of a quality improvement database is composed of patients ≥ 100 years old admitted to a community teaching hospital from 2017 to 2020. Patients who expired in the hospital or were discharged to hospice were excluded. Depression was identified using ICD-10 codes or antidepressant prescription. Chi-square tests compared patients with and without depression. Returns included ED visits and admissions within 30 days of discharge. Primary diagnoses for hospital returns were determined by ICD-10 discharge codes.

Results: Among 513 eligible admissions, 91 (18%) met depression criteria. Thirty-day return rates were similar between depressed and non-depressed admissions, 19% (17) vs. 18% (78), respectively. Centenarians with depression were similar to their non-depressed counterparts in demographics and comorbidities, but were more likely to have altered mental status ($P=.031$), anxiety disorder ($P<.001$), and return with a cardiovascular primary diagnosis.

Conclusions: One in five admissions of centenarians in this cohort met our criteria for depression, but they were not at a higher risk of returning to the hospital within 30 days of discharge than those who did not meet depression criteria. The relationship between depression to hospital returns and other adverse outcomes among centenarians should be studied further.

Association Between Oral Antithrombotic Prescription and Bleeding in Patients Over 75

Authors: Mia Glickman, Yash Nagpal, Gabriella Engstrom, Joseph Ouslander

Presenter: Mia Glickman, BS Biology

Background: Older adults frequently require oral antithrombotic therapy given the increased risk of thromboembolism with age. Emerging literature suggests that novel oral anticoagulants (NOACs) demonstrate a lower risk of major bleeding compared to vitamin K antagonists or antiplatelets, but data addressing how this applies to older adults is limited.

Objectives: Determine (1) what percentage of older adults who presented to the hospital with major bleeding were prescribed an oral antithrombotic, and (2) which antithrombotic class was most commonly prescribed.

Methods: This is an analysis of a database composed of 62,214 patients over 75 who presented to a Palm Beach hospital between 2017 and 2020. Patients included in the study must have been prescribed an oral antithrombotic prior to admission. Major bleeding was defined as any bleeding event (1) occurring at a critical region, (2) resulting in a hemoglobin decline of $2 \text{ g/dl} \leq$, or (3) requiring a transfusion based on ICD-10 codes.

Results/Discussion: Of 1,838 patients who presented to the hospital with a major bleeding event, 346 (19%) patients had been prescribed an oral antithrombotic prior to hospitalization; 189 (54.6%) were aged 75-85, 155 (44.7%) were 86-99, and 2 (0.6%) were over 100. Among the 346, 218 (63%) were prescribed an antiplatelet, 114 (33%) a NOAC, and 44 (9%) Warfarin. Among the 346 patients with a major bleeding event who had been prescribed an antithrombotic, 351 major bleeding events were identified. Distribution of bleeding types was nearly identical in 75-85 and 86-99 age groups.

Conclusions: Among patients over the age of 75 who presented with major bleeding, only 3% had been prescribed an oral antithrombotic prior. Patients aged 75-85 were prescribed antithrombotics at a higher rate (55%) than those in the 86-99 (45%) or 100+ age group ($<1\%$). Antiplatelets were most commonly associated with major bleeding events.

Converting a High-Fidelity Opioid Overdose Simulation to a Virtual Experience

Presenter: Carol Motycka, PharmD, CHSE

Abstract: The Covid-19 pandemic caused a disruption in teaching for institutions across the country, particularly for those using simulation-based education. Our team converted a live high-fidelity simulation (HFS) into an online virtual simulation using a storyline and branching pathway approach. The team collaborated with multimedia specialists in video production to create a branching path simulation, taking interprofessional teams of online students, including colleges of nursing, pharmacy, and medicine, through several decision-making points of a patient experience in the emergency department. Video vignettes of simulation decision points are incorporated throughout the simulation, with a final outcome eventually emerging. The TeamSTEPPS® Teamwork Attitudes Questionnaire (T-TAQ) was administered before and after the online simulation and descriptive data analysis (paired sample t-test) was conducted using SPSS statistical software. A post-simulation satisfaction survey was similarly analyzed. T-TAQ scores were similar to previous HF renditions; however, satisfaction scores were significantly lower. As anticipated, cost savings for equipment was also significantly lower. The data suggests that an online simulation activity is a viable option when HFS is not available or is cost prohibitive; however, students prefer the live high-fidelity simulations.

Hurricane Idalia: Long-Term Care Residents — Smooth Transition Blueprint

Authors: Lislie Gonzalez, MD; Tahira Tyrell, MD; Deepak Mandi, MD; Sandra DiScala, MD; Vanessa Belcher, MD; Ina Morris, MD; Sushama Vazrala, MD; Michael Silverman, MD

Presenter: Lislie Gonzalez, MD

Background: On Aug. 28, 2023, the West Palm Beach Veterans Administration Medical Center (WPB) had to accommodate 30 veterans who were relocated more than 200 miles from Bay Pines Veterans Administration Medical Center (BP) due to Hurricane Idalia. To ensure a smooth transition, WPB established an executive leadership command center, transmitted medical record information, and ordered necessary supplies in advance. The veterans were assigned to prearranged rooms and received continued care by BP medical staff, negating the necessity for new health assessments. BP staff were given access to computer systems and fingerprinted for pharmacy access. Medication sheets were prepared and initial medications were stocked, while food and beverages were provided. The pharmacy reviewed medication for all transfers before and during admission, and the minimum data set (MDS) was completed in real time for all 30 residents. Despite some challenges, the plan was effective. One resident lacked access to O2 in their assigned room, and there were delays in obtaining key fob and personal identification verification cards for access to rooms and facilities. MDS coordinators experienced pressure to complete assessments promptly, and BP staff experienced fatigue after an eight-hour shift followed by a five-hour bus journey. Additionally, four residents had incomplete allergy reviews on admission. Oxygen tank regulators also presented issues, and completing the Resident Assessment Instrument (RAI)/MDS was difficult due to the short stay, which impacted quality measures. The veterans were discharged back to Bay Pines on Aug. 31, 2023, following a 48-hour stay. This experience serves as a valuable blueprint for both Veterans Administration and non-Veterans Administration facilities facing similar challenges during natural disasters.

A Rare Case of T3 Hyperthyroidism

Authors: Tanyushia Cruz, MD; Desiree Simon, APRN; Naushira Pandya, MD, CMD

Presenter: Tanyushia Cruz, MD, DABFM

Abstract: A 79-year-old woman with history of HTN and COPD was evaluated for long history of hyperthyroidism. She complained of worsening of thyroid enlargement, fatigue, weight gain, insomnia, nail changes, memory impairment, and hoarseness. A prior extensive thyroid workup revealed subclinical hyperthyroidism, multiple small cysts with calcifications and complex focal lesions by thyroid ultrasound, and a benign colloid nodule by FNA. Previously, she failed a trial of methimazole due to an allergic reaction, resulting in a change to propylthiouracil. Physical exam was remarkable for right thyroid nodule, measuring 3 x 2 cm, firm, mobile, and non-tender. Laboratory tests performed after our initial evaluation showed a low TSH (< 0.01 mIU/mL), normal free T4 (1.0 mIU/mL), and elevated total T3 (209 mIU/mL). Repeated laboratory tests continued to show suppressed TSH (0.01 mIU/mL), normal free T4 (1.8 mIU/mL), and elevated total T3 (237 mIU/mL). Repeated thyroid ultrasound showed an enlarged right thyroid with diffusely heterogeneous echogenicity and two complex nodules. Consequently, she underwent an I-123 uptake and scan, which showed a large hot nodule in the right thyroid lobe with elevated 24-hour isotope uptake of 54% (normal 10-30%). Due to her intolerance to antithyroid medication, she received radioactive iodine ablation therapy. Three months after procedure, laboratory tests showed elevation of TSH (0.6 mIU/mL), lower free T4 (0.7 mIU/mL), and normal T3 (95 mIU/mL). This case illustrates the potential complexity and variability of hyperthyroidism. The diagnosis of hyperthyroidism is usually uncomplicated; in this case, presentation and diagnosis of T3 hyperthyroidism was challenging. Recognition of the different presentations of hyperthyroidism is critical to institute appropriate therapy and to avoid possible more severe complications.

Use of Tablets to Improve Telehealth Services Among Older Adults

Presenter: Marie Dezine, MS

Abstract: Loneliness and lack of technical literacy are factors associated with negative quality of life and poorer health outcomes, especially among homebound older adults. During the pandemic, Nova Southeastern University's South Florida Geriatric Workforce Enhancement Program (NSU SFGWEP) partnered with primary care clinics and a local community-based organization to provide support to vulnerable older adults. The purpose was to (1) provide educational resources and (2) promote telehealth services. SFGWEP identified 44 vulnerable older adults during the 12-month study period to participate in a pilot program through the NSU health clinics and referrals from a community-based organization. All participants were aged 65 and above and had expressed interest in telehealth support after being contacted for a wellness call. Participants were mailed internet-enabled tablets for six months of use. Tablets were preloaded with educational materials focused on tablet usage, Covid-19 resources, and telehealth for patients in written and video format. Biweekly remote support was provided to each participant to aid with using the tablet, connectivity, education, and telehealth. Most participants, 89% (n=39), used the tablet in some capacity; 23% (n=10) reported using it daily. In total, 11% (n=5) used it for telehealth, 9% (n=4) research, 9% (n=4) entertainment, 7% (n=3) to connect with friends and family, and 7% (n=3) to connect with faith/ministries, with other uses including shopping, news, and apps. Among participants, 36% (n=16) found the education materials impactful. Nearly all participants reported having comfort with the availability of the tablet for socialization. The pilot study demonstrated that homebound older adults are able to utilize technology to connect with healthcare providers and friends if provided guidance and support. The pilot also demonstrated that distributing health education information via tablets may be an effective strategy. More robust evaluation of technology adoption interventions to homebound seniors should continue to be conducted to assess feasibility post-pandemic.

Annual Wellness Visit and 4ms Assessment: A Quality Improvement Project to Improve Age-Friendly Health Care

Authors: Sweta Tewary, PhD, MSW, MS; Naushira Pandya, MD, CMD, FACP; Desiree Simon, DNP, APRN, AGPCNP; South Florida Geriatric Workforce Enhancement Program, Department of Geriatrics (SFGWEP), Dr. Kiran C. Patel College of Osteopathic Medicine, Nova Southeastern University (NSU)

Presenter: Sweta Tewary, PhD

Abstract: Annual wellness visits (AWV) are associated with improved preventative services including vaccination and cancer screenings. Literature highlights the importance of AWS and diabetes management. However, the AWV is not tailored to meet the needs of geriatric patients with chronic conditions who may need a broader and in-depth assessment. Age Friendly Health Systems (AFHS) promotes comprehensive geriatric care through evidence-based principles of providing 4Ms care. Although AWV can be a useful guide to providing geriatric care, it is important to integrate the 4Ms assessment to provide comprehensive geriatric care. This study is a quality-improvement initiative to implement AFHS and improve Medicare annual wellness visits compliance. To implement AFHS in a geriatric clinic, we identified a nurse champion who helped educate and implement AFHS and 4Ms guided by the AWV template in EHR. Completion of 4Ms was conducted by residents and medical students under the supervision of medical providers. Data was entered in the EHR as well as an Excel spreadsheet to ensure documentation. We completed 4Ms on 13 patients from Sept. 1 to Dec. 1, 2022. Face-to-face implementation of 4Ms resulted in 100% completion of medication review and reconciliation, mentation, mobility, and what matters. Results from this QI project in an outpatient clinic suggest using AWV template and AFHS assessment to care for older adults. Implementation results also suggest adapting the 4Ms assessment schedule for patients with complex chronic conditions who may have multiple comorbidities and cognitive impairment.

Age Friendly Nursing Home Care: Integrating the 4Ms into the CNA Training Program

Presenter: Oksana Shnyder, BS

Abstract: The recent report by the Committee on the Quality of Care in Nursing Homes highlighted the limitations within nursing home facilities including neglect and abuse of their residents, high living costs and poor quality of life, lack of oversight, as well as nursing staff shortages and burnouts. With multiple challenges in sustaining the nursing home workforce, it is imperative to provide support and continued education to nursing home staff and nursing students on recent developments in evidence-based approaches to geriatric care including Age-Friendly Health Systems (AFHS) and dementia-friendly care. NSU SFGWEP conceptualized, designed, and delivered a modified geriatric curriculum to the CNA students at the partnering organization site. The curriculum integrated eight training modules within the framework of AFHS and covers topics on each of the 4Ms: Matters Most, Mobility, Mentation, and Medication. The data on the increase in education on AFHS and the 4Ms was collected via a specifically designed survey which is administered electronically through mobile devices or via paper questionnaires. The survey responses were managed through REDCap™, a secure web application for administering online surveys. A total of 128 trainees have completed one or more training sessions and submitted the feedback survey. Collected data on pre/post-training evaluations suggests a significant improvement in participants' knowledge of the geriatric topic within AFHS and the 4Ms with 97% of participants reporting the likelihood of applying the knowledge in their role as health professionals proposing a sustainable training program for the nursing workforce to promote age-friendly care for older adults.

Goals of Care: Interscalene Nerve Block And Shoulder Surgery

Authors: Rachel Cathey (MS3); Niharika Suchak, MD, Geriatric Medicine, Florida State University College of Medicine, Tallahassee, FL

Presenter: Rachel Cathey (MS3)

Introduction: Interscalene brachial plexus block, the most common regional anesthetic technique used in shoulder surgeries as part of a multimodal analgesia approach, is known to decrease postoperative pain, reduce requirements for opioid pain medication, and promote earlier mobilization.

Case Description: An 87-year-old Female underwent an elective right shoulder reverse arthroplasty. She had no prior lung disease or tobacco usage. Post-operatively, pain was well-controlled with an interscalene nerve block with less than usual dose of bupivacaine (12.5mL) and naproxen and acetaminophen.

One day post-op, the patient experienced shortness of breath; O2-sat. dipped to 79% with minimal exertion. Chest X-ray showed new right hemi-diaphragmatic elevation. With supplemental oxygen and incentive spirometer use, O2-sat. improved to 97% and shortness of breath resolved over the next few days at the rehabilitation facility. Repeat chest X-rays up to 5 weeks post-op showed stale eventration of right hemidiaphragm.

Discussion: Impact of comorbidities, particularly pre-operative oxygen saturation, asthma, congestive heart failure, and BMI influence likelihood of post-operative complication of hemi-diaphragmatic elevation due to phrenic nerve palsy related to interscalene nerve block. It is a common but usually short-lived complication with spontaneous resolution, but not for this patient. Patient had chronic pain with known high tolerance and may have opted to tolerate short-term post-op pain to avoid complication of hemidiaphragmatic paresis, if she had been informed of alternate options.

Conclusion/Lesson Learned: “Primum non nocere” – first, do no harm. This case highlights the importance of a person-centered discussion of goals of care rather than assuming that patients want pain relief procedures with potential complications. This patient could have been a candidate for forgoing interscalene nerve block, avoiding the complication of hemi-diaphragmatic paresis.



Transforming health care together

Optum works with skilled nursing facilities and assisted living communities to provide an added layer of care for residents of participating health plans.

Visit optum.com to learn more.

Optum

**United
Healthcare**

© 2023 Optum, Inc. All rights reserved. WF11135908 303289-072023 07/23

UROVANT[®]
SCIENCES



Save the Date!

Oct. 31-Nov. 3, 2024

FMDA's 33rd Annual Conference & Trade Show

Signia
by Hilton

ORLANDO BONNET CREEK

Signia by Hilton
Orlando Bonnet Creek



Official Walt Disney World Hotel

Epcot® – 2 miles

Disney Springs™ – 2.5 miles

Magic Kingdom® Park – 6 miles

You will have full access to an 18-hole championship golf course
at the Waldorf Astoria Golf Club at the adjoining sister property,
Waldorf Astoria Orlando.



fmda

THE FLORIDA SOCIETY
FOR POST-ACUTE AND
LONG-TERM
CARE MEDICINE



**Best Care
Practices**
In the Post-Acute &
Long-Term Care Continuum

FMDA-The Florida Society for Post Acute and Long-Term Care Medicine

400 Executive Center Drive, Suite 208 • West Palm Beach, FL 33401

(561) 689-6321 • Fax: (561) 689-6324

www.fmda.org

TIMES

EVENT

LOCATION

Thursday, Oct. 19

OPTIONAL PRE-CONFERENCE

7:45 a.m.-6 p.m.	Registration & Information	Wekiwa Registration
8:45 a.m.-12 p.m.	101 – The Journey from Advance Care Planning to End-of-Life WORKSHOP	Wekiwa 2
1:15-2:15 p.m.	102 – Advance Care Planning with Patient-Directed Doctor's Orders	Wekiwa 2
2:25-3:25 p.m.	103 – Panel Discussion: Best Practices in Palliative Care and Hospice Services	Wekiwa 2

START OF CONFERENCE

3:35-4:35 p.m.	104 – Cardiac Amyloidosis As a Reason for Heart Failure Exacerbation	Wekiwa 2
	Among Older Adults: The Impact of its Increasing Diagnosis in PALTC	
4:45-5:45 p.m.	105 – Diversity, Equity, and Inclusion – In Pursuit of Belonging	Wekiwa 2
5:50-6:50 p.m.	106 – CME Dinner Program	Wekiwa 4
	Can We Improve Management of Overactive Bladder in LTC? Examining the Role of Beta-3 Adrenergic Agonists	

Friday, Oct. 20

8:30 a.m.-5:30 p.m.	Registration & Information	Gatlin Registration 1
7:45-8:30 a.m.	FMDA Annual Membership Meeting	Wekiwa 5
8:35-8:45 a.m.	President's Welcome – Diane Sanders-Cepeda, DO, CMD	Gatlin A1/2
8:45-9:45 a.m.	107 – Keynote Address.	Gatlin A1/2
9:50-10:50 a.m.	108 – Legal Update for Practitioners	Gatlin A1/2
10:55-11:55 a.m.	109 – Psychotropic Stewardship – Phase 3 Guidance and Beyond	Gatlin A1/2
12-1 p.m.	Product Theater Lunch (non-CME/CPE/CE)	Wekiwa 3/4/5
	Recognizing and Treating Tardive Dyskinesia in Long-Term Care	
1-2 p.m.	110 – Script for Filling the Gap: The Importance of Medication Management.	Gatlin A1/2
	and Best Practices in Transitions of Care	
2:05-3:05 p.m.	Grand Opening of Trade Show and Poster Presentations	Gatlin A3/4
3:15-4:15 p.m.	111 – The Sum Is Greater Than the Parts: Mitigating the Risk – Utilization Review Results	Gatlin A1/2
	of a 1-Year SNF Clinical Team Assessment of Difficult Cases	
4:20-5:20 p.m.	112 – An Update on Geriatric Syndromes in LTC	Gatlin A1/2
5:25-6:55 p.m.	Exhibit Hall Welcome Reception	Gatlin A3/4
	Refreshments sponsored by VITAS Healthcare – 32nd Annual Diamond Sponsor	

Saturday, Oct. 21

7:45 a.m.-6 p.m.	Registration & Information	Gatlin Registration 1
8-9 a.m.	Continental Breakfast in Exhibit Hall with Trade Show and Poster Presentations	Gatlin A3/4
	Sponsored by VITAS Healthcare – 32nd Annual Diamond Sponsor	
9-9:05 a.m.	Greetings from AMDA Executive Director Michelle Zinnert, CAE	Gatlin A1/2
9:10-10:40 a.m.	113 – National Leaders Forum.	Gatlin A1/2
10:45-11:45 a.m.	114 – National Trends in PALTC.	Gatlin A1/2
11:45 a.m.-12:50 p.m.	Break in Exhibit Hall with Trade Show and Poster Presentations	Gatlin A3/4
12:50-1:50 p.m.	Product Theater Lunch (non-CME/CPE/CE)	Butler
	Agitation Associated with Dementia Due to Alzheimer's Disease: An Expert Discusses Treatment Considerations and Current Guidelines	
	Sponsored by Otsuka America Pharmaceutical, Inc., and Lundbeck	
1:50-2:50 p.m.	115 – AMDA Public Policy Update	Gatlin A1/2
2:55-3:55 p.m.	116 – STATE AHCA Regulatory Update.	Gatlin A1/2
4-5:30 p.m.	117 – QA&A and QAPI: Driving the Call to Action	Gatlin A1/2

CONCURRENT SESSIONS

5:40-6:40 p.m.	118 – Medicare Billing & Coding Update	Wekiwa 3/4
	119 – From Novice to Expert: Rapid Fire Presentations	Wekiwa 5

President's Wine & Cheese Reception

Reception is sponsored by **Optum**.

FMDA's Robert Kaplan Quality Champion Award is sponsored by **CVS/Omnicare**.

Sunday, Oct. 22

7:15 a.m.-1:15 p.m.	Registration & Information	Gatlin Foyer
6:45-7:45 a.m.	Conference Planning Committee Review & Wrap-up Breakfast Meeting	Wekiwa 3
7:20-9 a.m.	Continental Breakfast.	Gatlin A1/2
7:45-8:40 a.m.	120 – Red-Eye Rounds: PALTC & Geriatrics Clinical Quandaries.	Gatlin A1/2
8:45-10:05 a.m.	121 – Geriatric Literature Review.	Gatlin A1/2
10:10-11:05 a.m.	122 – Enhancing Heart and Brain Health in PALTC.	Gatlin A1/2
11:15 a.m.-12:10 p.m.	123 – C. Difficile Muy Dificil – 2023	Gatlin A1/2
12:15-1:15 p.m.	124 – OMG...What Can I Put on That? Case-Based Practical Guidance on Topical Wound Treatments	Gatlin A1/2

END OF CONFERENCE: Announcements, Door Prizes, etc.

– Please note that the speakers and topics for this meeting are subject to change without notice.